

NTX.3

new generation rc car

1/10 SCALE NITRO

ON ROAD RACING CAR



INSTRUCTION MANUAL

WRC
PROFESSIONAL RC CAR

www.wrc-racing.com



INTRODUCTION

NTX is a new generation high quality 1/10 scale Touring nitro car.
NTX is supplied in a box, you can download the Instruction manual from www.wrc-racing.com
Its use is intended for more than 16 years old persons with experience on rc model car field.
Children and all the persons without this requirement MUST have direct supervision of a knowledgeable adult responsible.

SAFETY PRECAUTIONS

Instruction Manual MUST be read and fully understood before to start building and operating functions.
Always keep Instruction Manual in safety place, ready to be consulted for any reference you need.
Use only original WRC spare parts.

GENERAL INFORMATION

Assemble the kit only away from the reach of children.
Follow the building and operating instructions using the utmost care.
Don't put any part of your body inside rotating and moving elements as this may cause damage or serious injury.
Check and clean the model before putting it away.
Don't use your model car in public places or in roads and areas where it could generate conflict with person or vehicular traffic.
The model car is controlled by radio: you MUST put great care to avoid loss of radio control always keeping a safety margin all around your model in order to prevent any collision.
Operating frequency: check and be sure it is clear and not shared with anybody at same time; it could cause loss of control of the RC model.
Always turn on your transmitter before you turn on the receiver in the car and always turn off the receiver before you turn off your transmitter.
Keep the wheels of the model off the ground when checking the operation of the radio equipment.
Disconnect the battery pack before storing your model.

WARRANTY

WRC guarantees this model kit to be free from defects in both material and workmanship within 30 days of purchase.
The total monetary value under warranty will in no case exceed the cost of the original kit purchased.
This warranty doesn't cover any components damaged by use or modification or as result of wear.
Part or parts missing from this kit must be reported within 30 days of purchase.
No part or parts will be sent under warranty without proof of purchase.
If you find a defective or missing part, contact the local distributor.
Customer service and support will be provided through local hobby store.
No warranties are expressed or implied that cover damage caused by what is considered normal use or cover or imply how long any model cars' components or electric components will last before requiring replacement.
Due to the high performance level of this model car you will need to periodically maintain and replace consumable components; any and all warranty coverage will not cover replacement of any part or component damaged by neglect, abuse or improper or unreasonable use.
This includes but is not limited to damage from crashing, excessive moisture, improper use or no maintenance or user modifications which compromise the integrity of components.
Warranty will not cover components that are considered consumable on RC model car.
WRC doesn't pay nor refund on any component sent from WRC or its distributor for warranty.
WRC reserves the right to make final determination of the warranty status of any component or part
Use only original WRC spare part:

CUSTOMER SUPPORT

Please don't hesitate to contact WRC support at info@wrc-racing.com for any problem or question.
Also kindly visit our website www.wrc-racing.com to find last updates, set-up information, option parts and other information.

W.R.C. world racing car s.r.l.

Via A. Volta 2 Bis
36040 Brendola (VI)
ITALY

Phone: 0039 0 444 1792263
E-mail: info@wrc-racing.com
Website: www.wrc-racing.com



NTX

TECHNICAL INFORMATION

- BODY: PROTOTYPE MODEL (NOT INCLUDED)
- ADJUSTABLE FRONT TOE, CAMBER AND CASTER
- ADJUSTABLE REAR TOE AND CAMBER
- BUMPER /FRONT BACKSTOP
- ALUMINIUM CHASSIS
- FULL BALL BEARING
- CARBON RADIO PLATE
- TRANSMISSION: TRIPLE BELT 4WD
- FRONT DIFFERENTIAL: DIFFERENTIAL GEAR
- REAR DIFFERENTIAL: DIFFERENTIAL GEAR
- FRONT AND REAR ADJUSTABLE ANTI-ROLL BARS
- PIVOT BALL SUSPENSIONS

TECHNICAL DATA

- LENGHT392 MM.
- WIDTHadjustable 195-200 MM.
- WHEEL BASEadjustable 258-263 MM.

ADDITIONAL ITEMS NEEDED FOR COMPLETION (REQUIRED BUT NOT INCLUDED IN THE KIT)



ENGINE AND MUFFLER



TRANSMITTER



RECEIVER



2 LOW PROFILE STEERING SERVO



BATTERIES FOR TRANSMITTER AND RECEIVER



WHEEL - TYRES - INSERTS



FUEL AND FUEL PUMP



STARTER GLOW PLUG IGNITER



STARTER



LEXAN BODY

TOOLS REQUIRED

THESE TOOLS ARE NOT INCLUDED IN THE KIT BUT ARE REQUIRED FOR PROPER ASSEMBLY



ALLENS:
1.5 mm
2 mm
2.5 mm
3 mm



SOCKET
5mm



SIDE CUTTERS



COMBINATION PLIERS



TOOL FOR
TURNBUCKLES/NUTS



SOCKET
7mm



GREASE

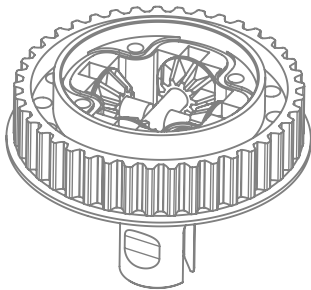
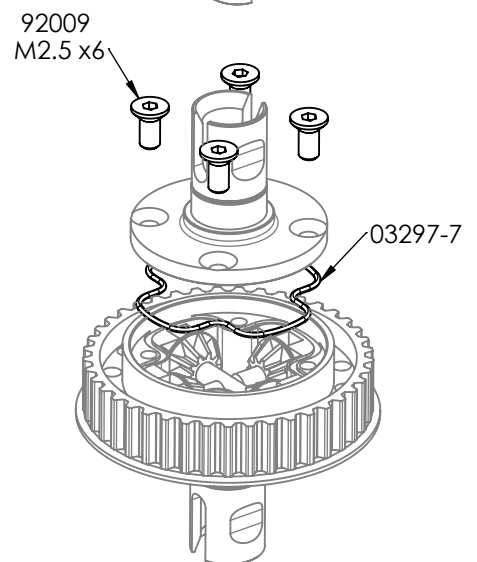
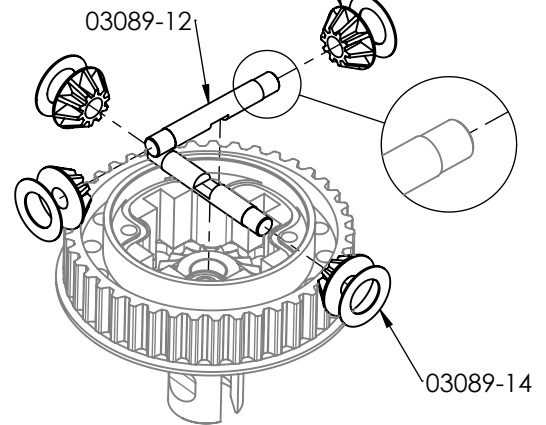
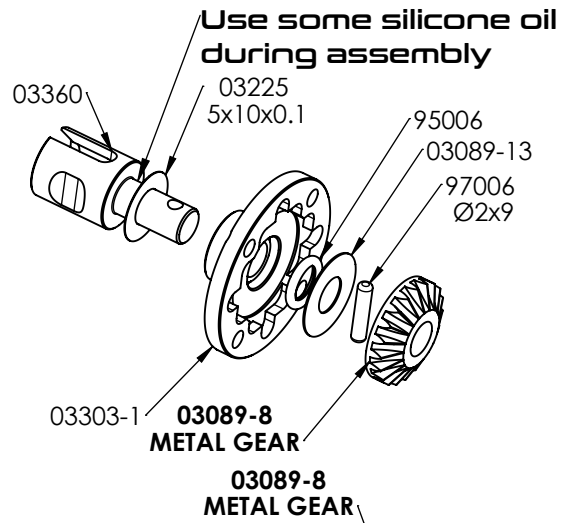
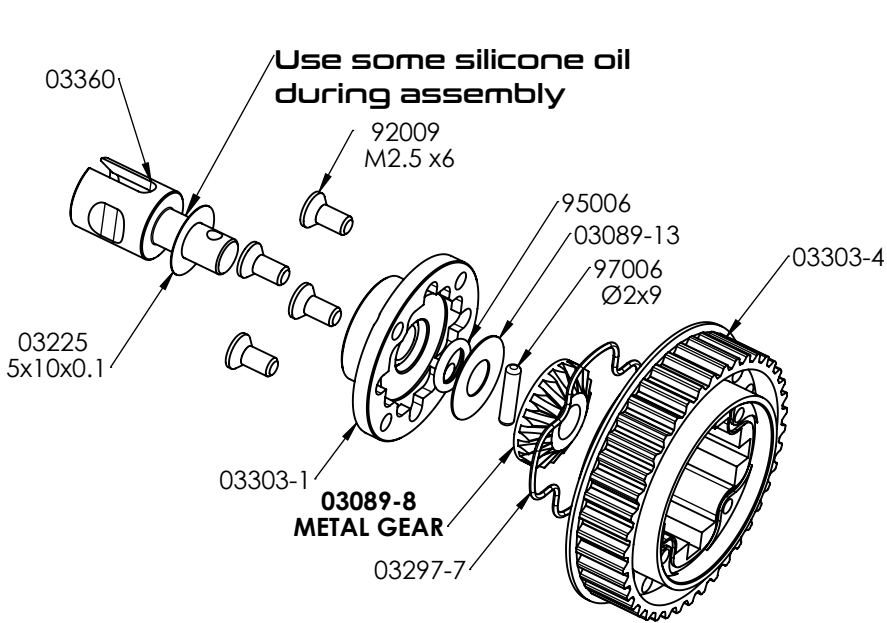


OILS:
5000 CST
BEARING OIL

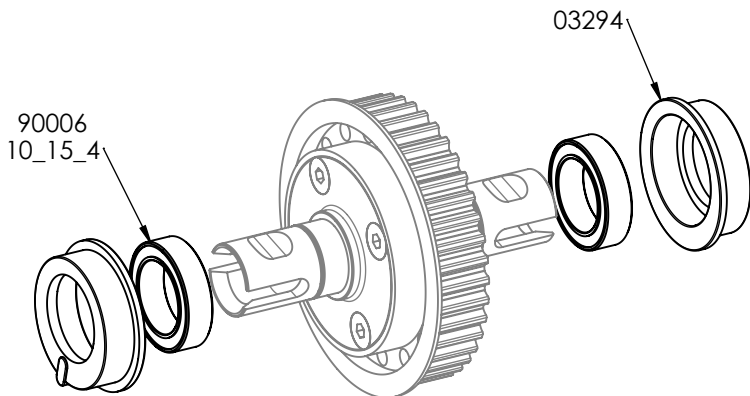
NOTICE:

THE FOLLOWING ITEMS ARE NEEDED FOR COMPLETION OF THE NTX; THEY ARE NOT INCLUDED IN THIS KIT (UNLESS NOTED) AND SHOULD BE OBTAINED FROM YOUR LOCAL HOBBY SHOP. BE SURE TO READ THE INSTRUCTION COMPLETELY PRIOR TO ASSEMBLY

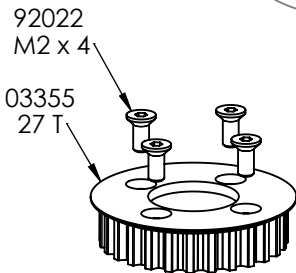
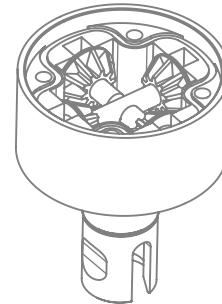
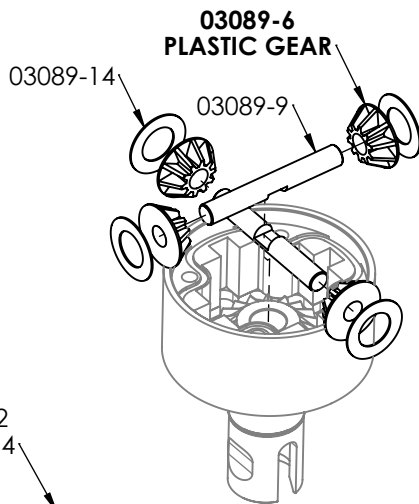
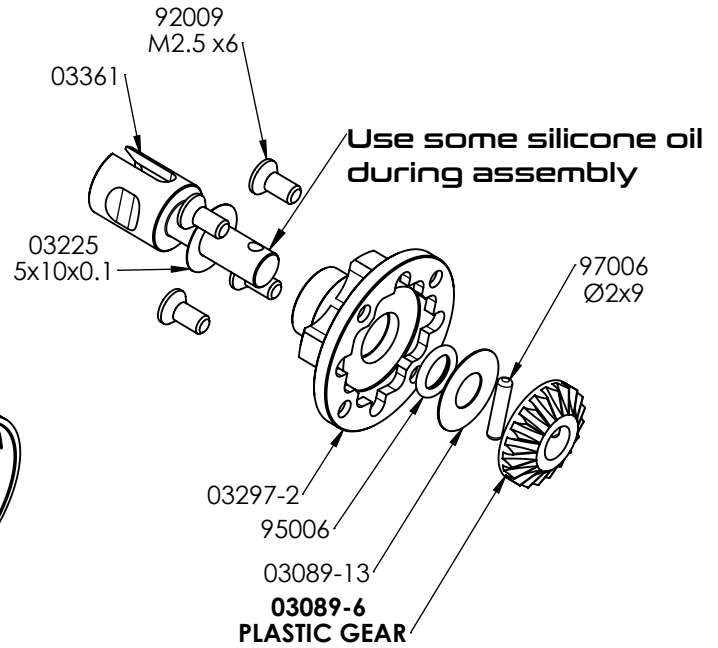
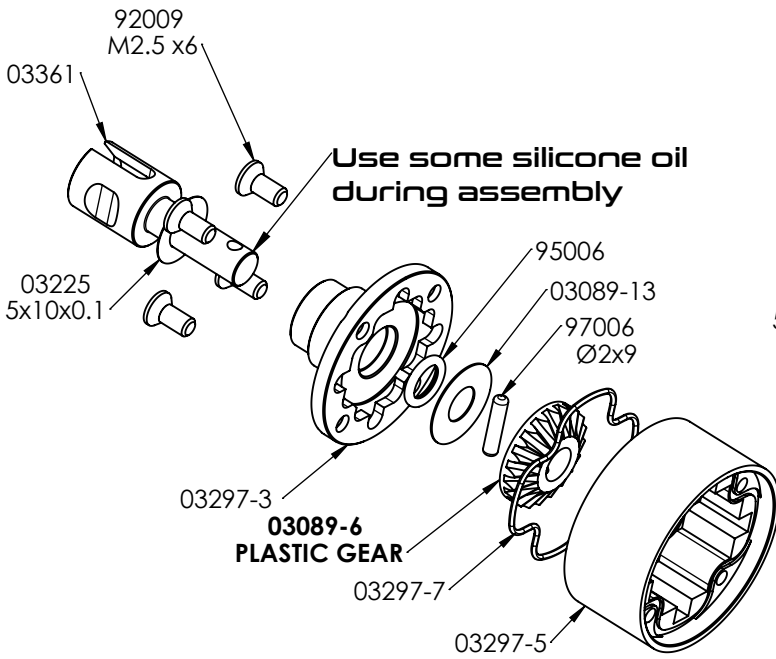
REAR DIFFERENTIAL ASSEMBLY



Fill the differential up to the top of the pin.
DO NOT fill the diff. to the top of the housing.
SILICONE OIL 100.000

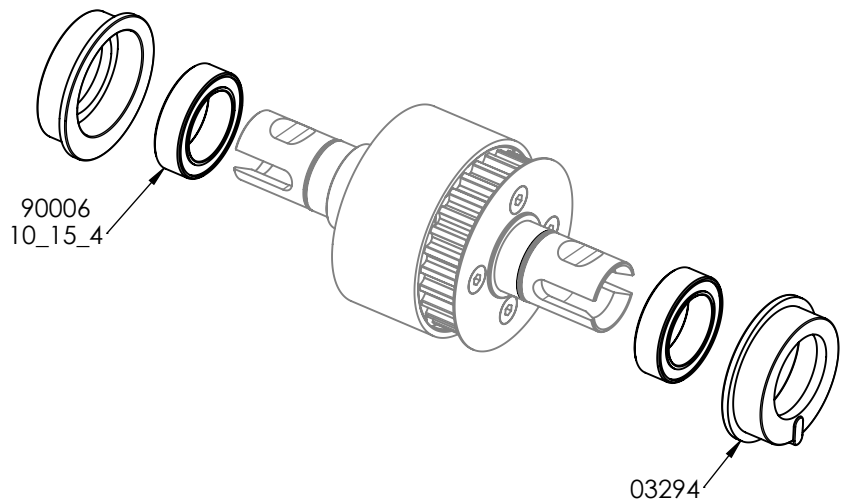
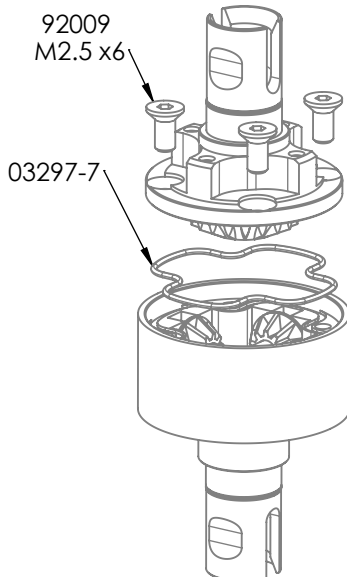


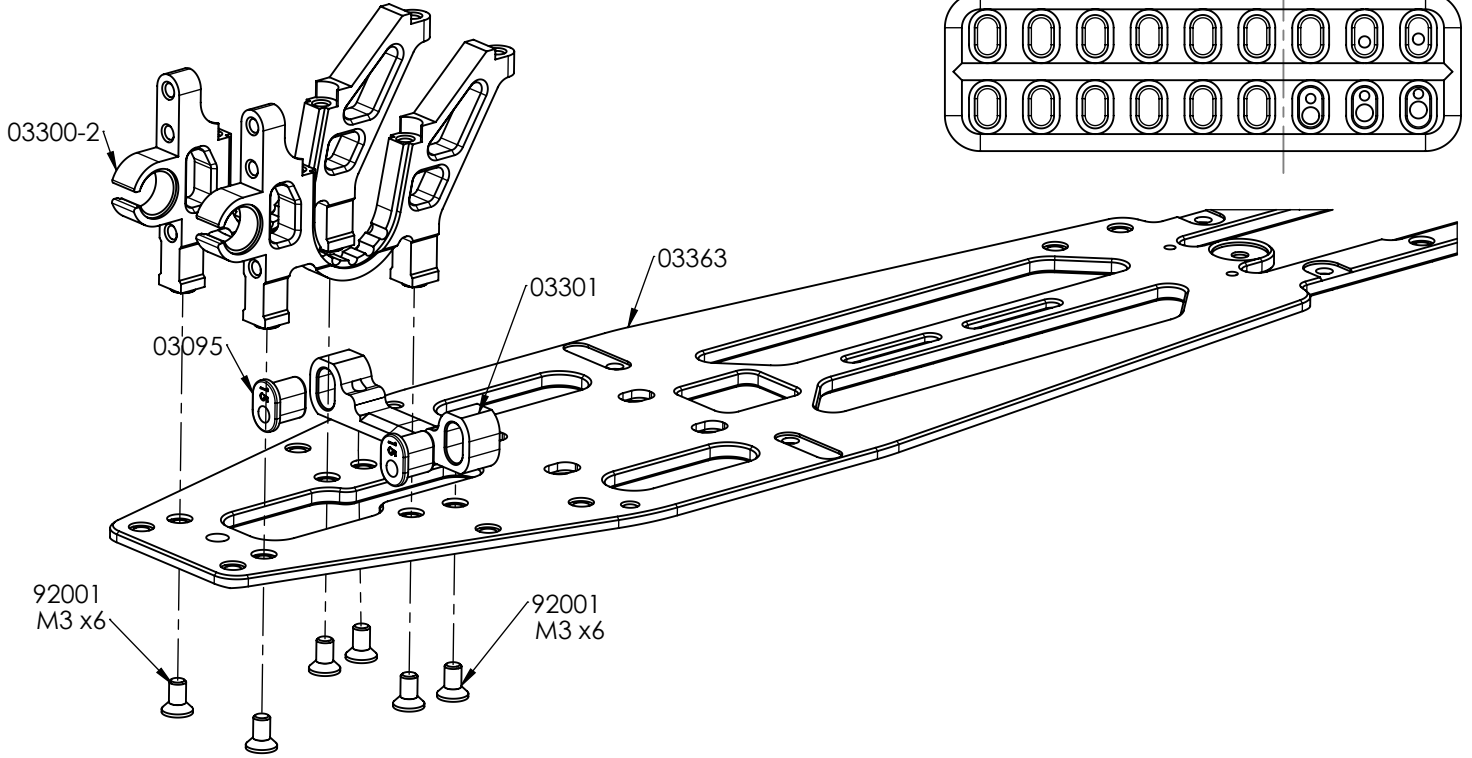
FRONT DIFFERENTIAL ASSEMBLY



Fill the differential up to the top of the pin.
DO NOT fill the diff. to the top of the housing.

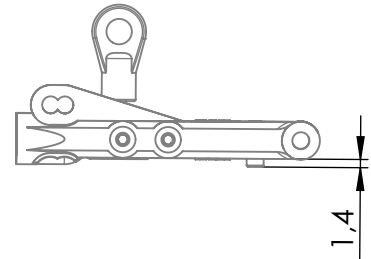
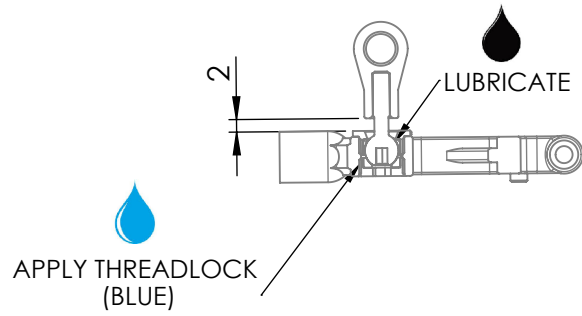
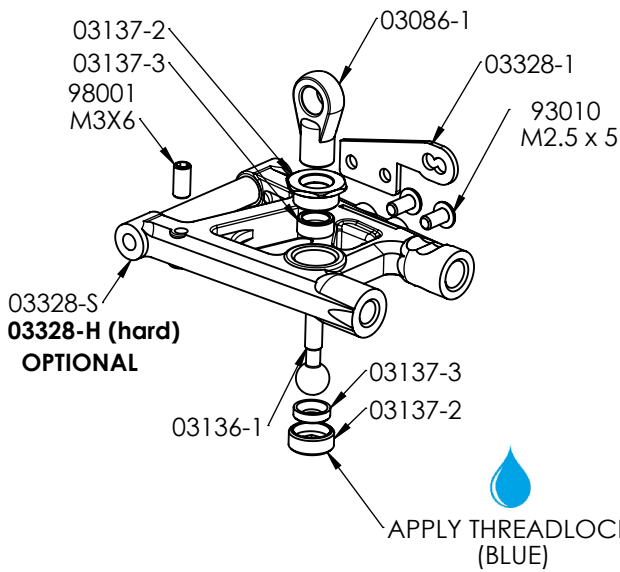
SILICONE OIL 1.000.000



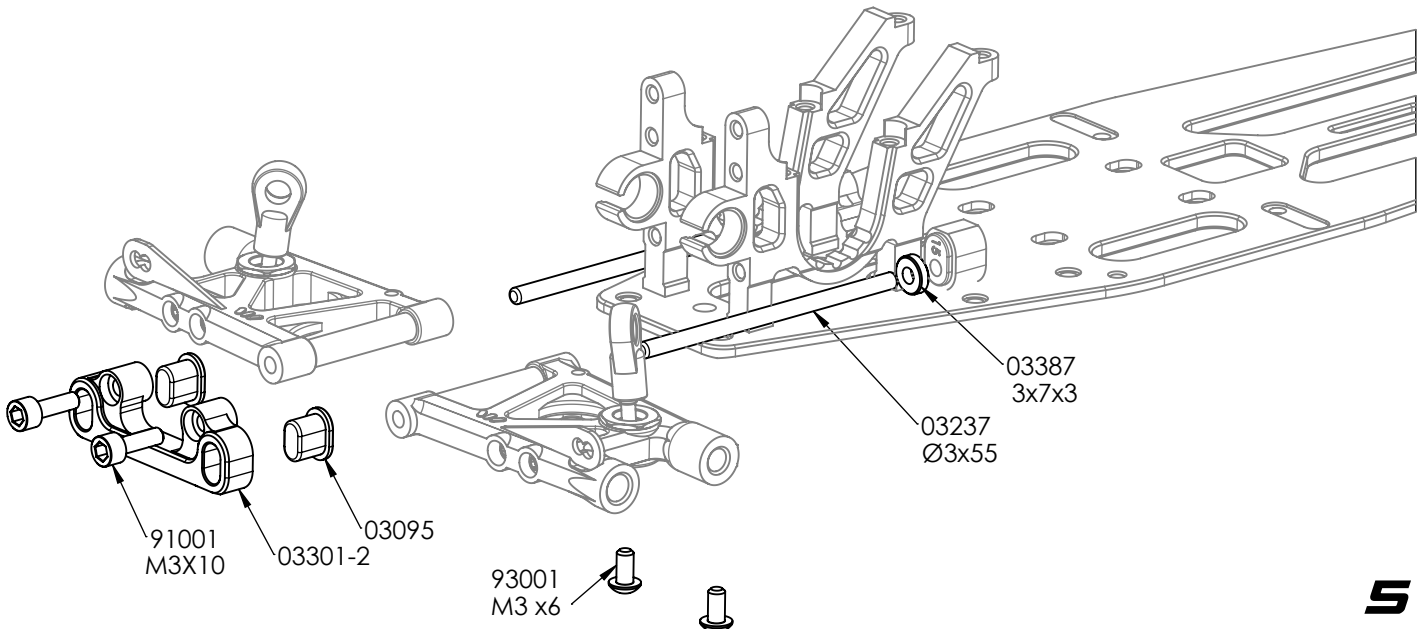


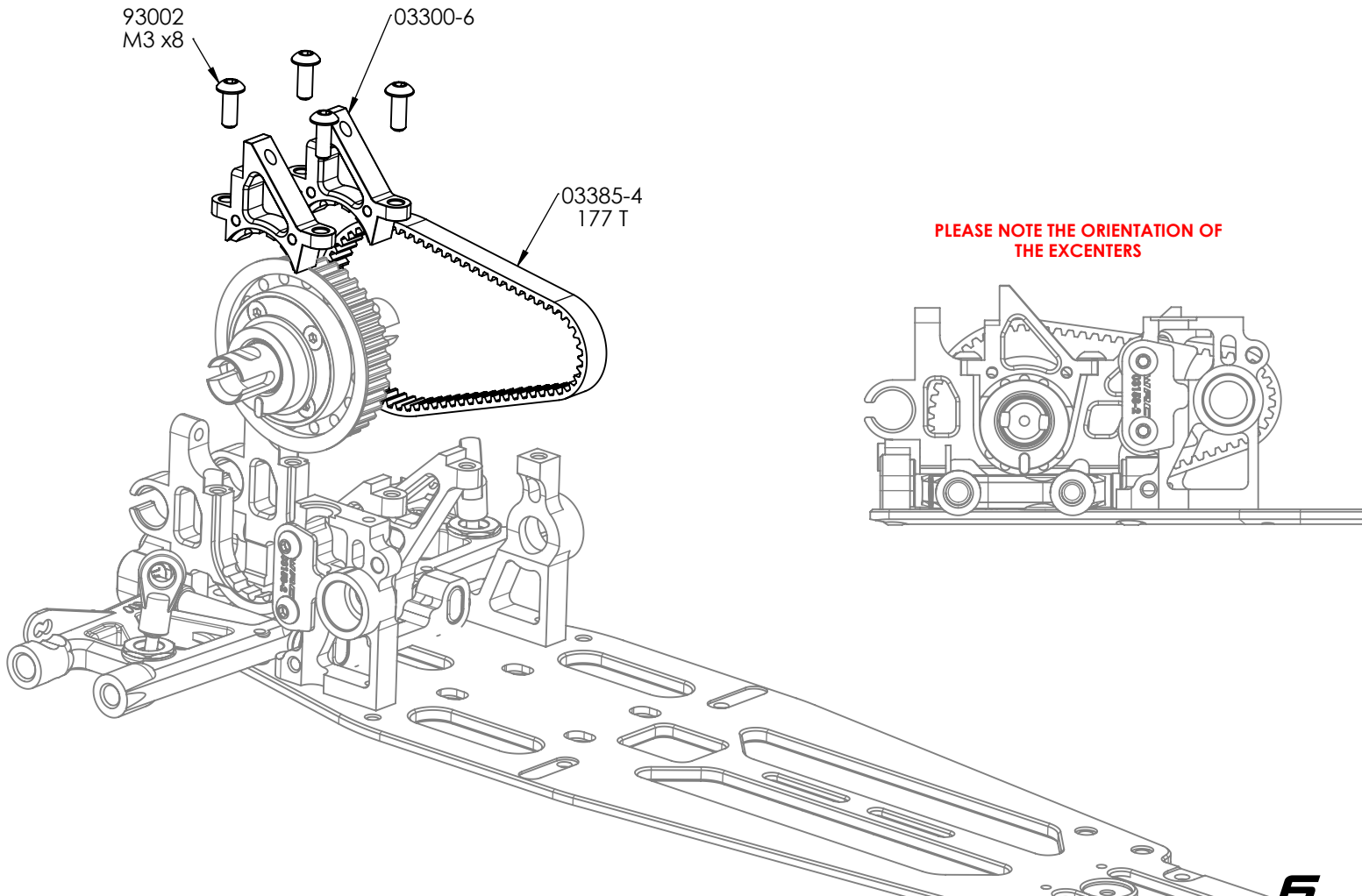
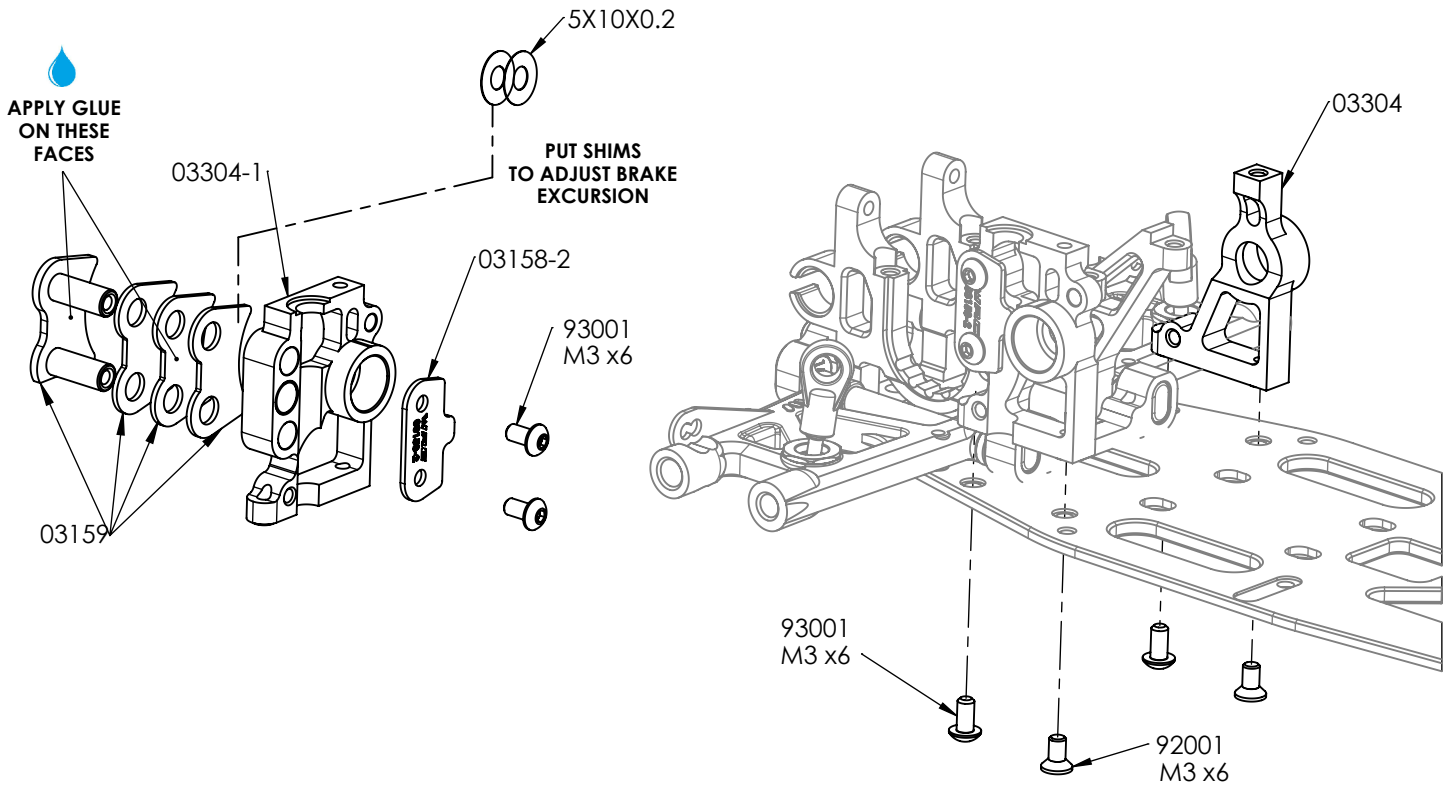
X2

BAG.4



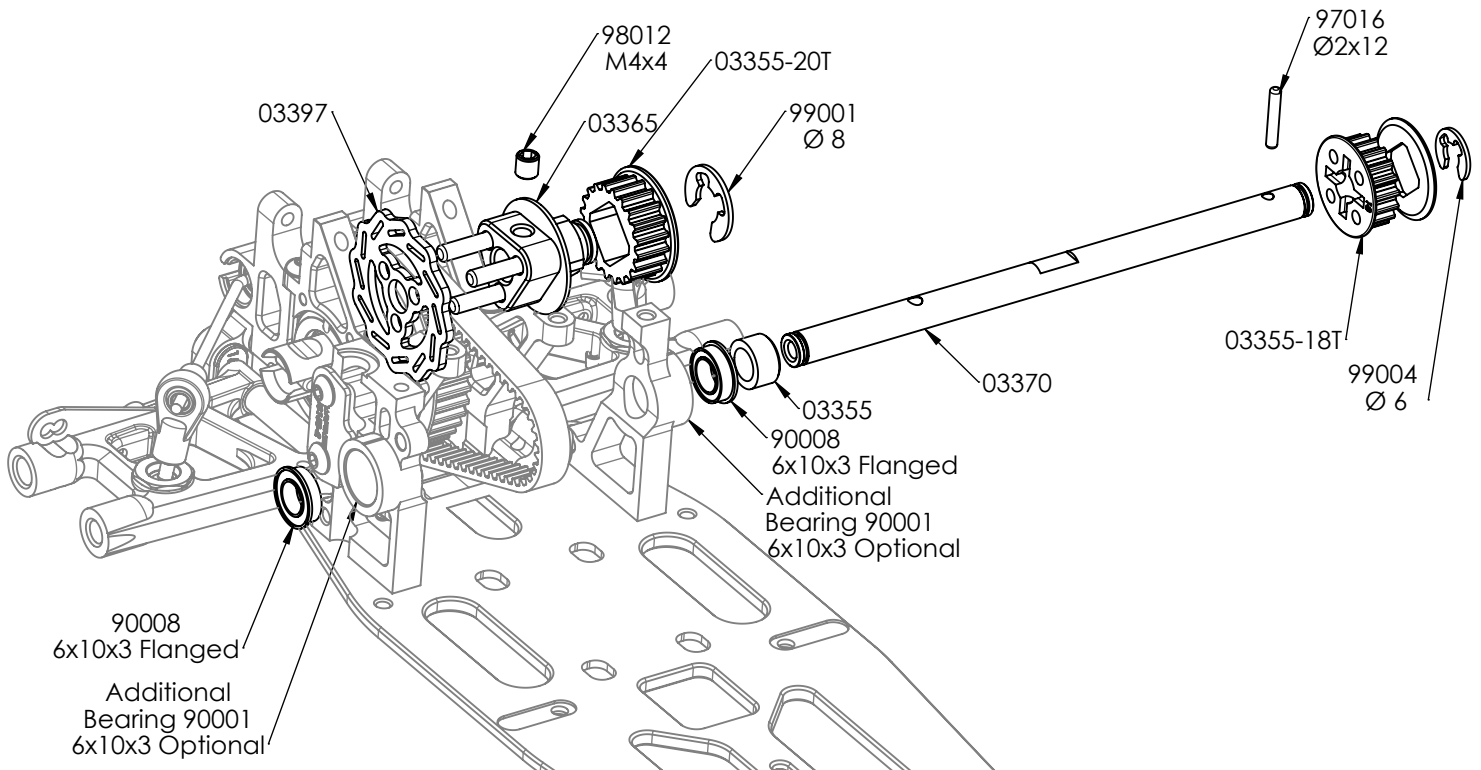
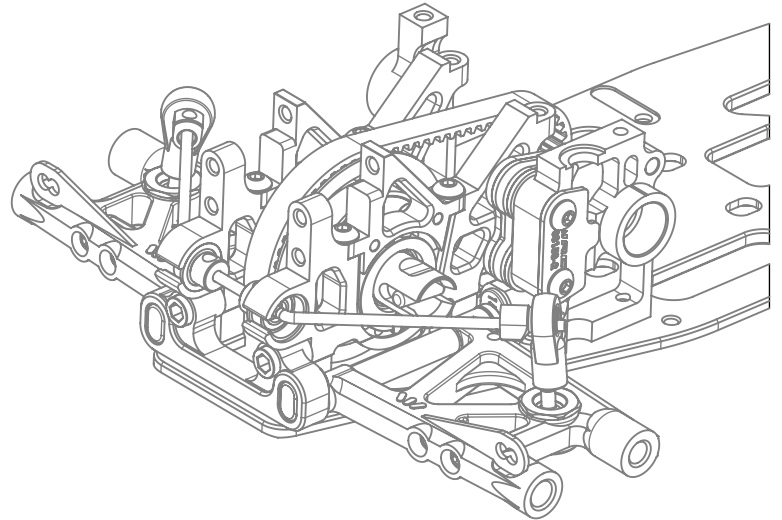
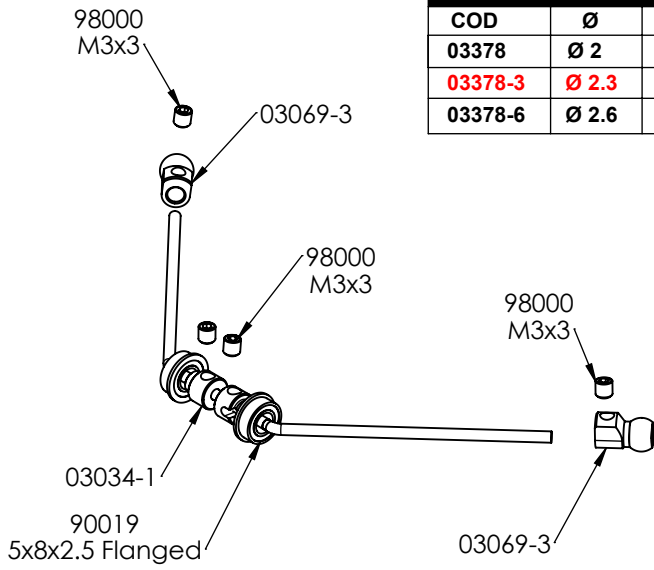
BAG.5

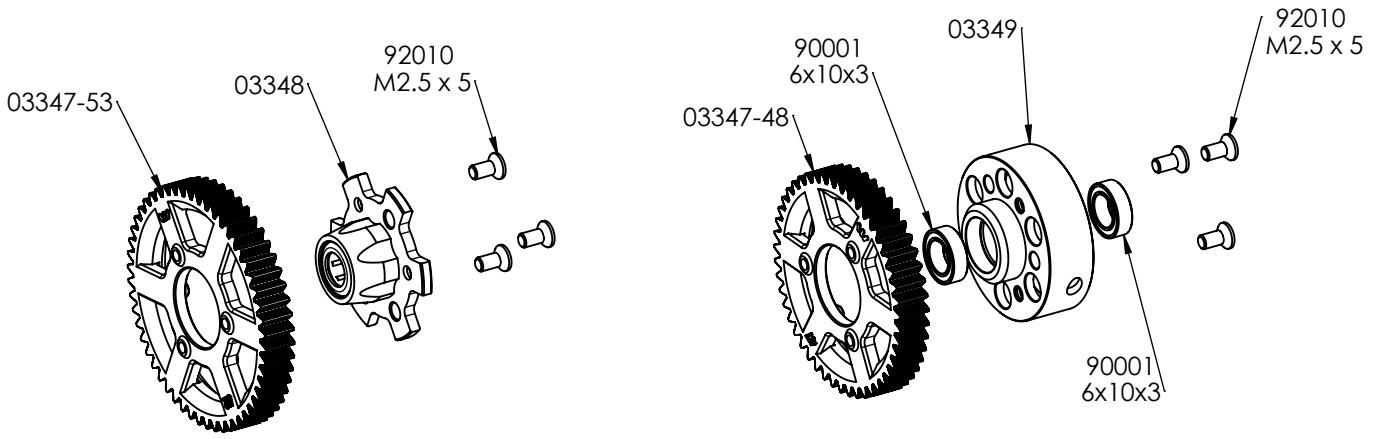




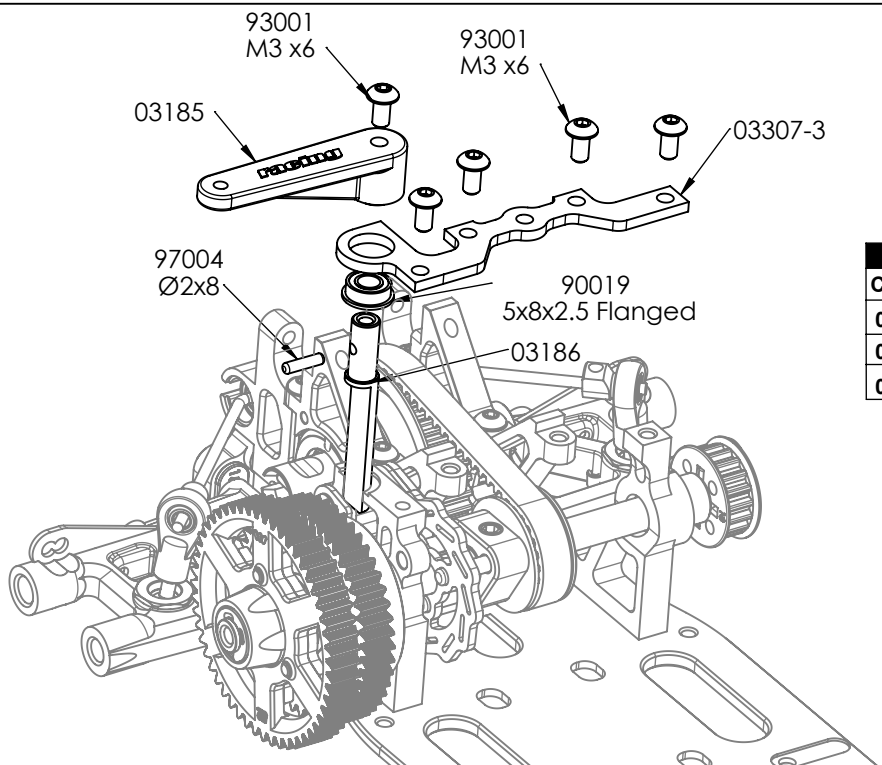
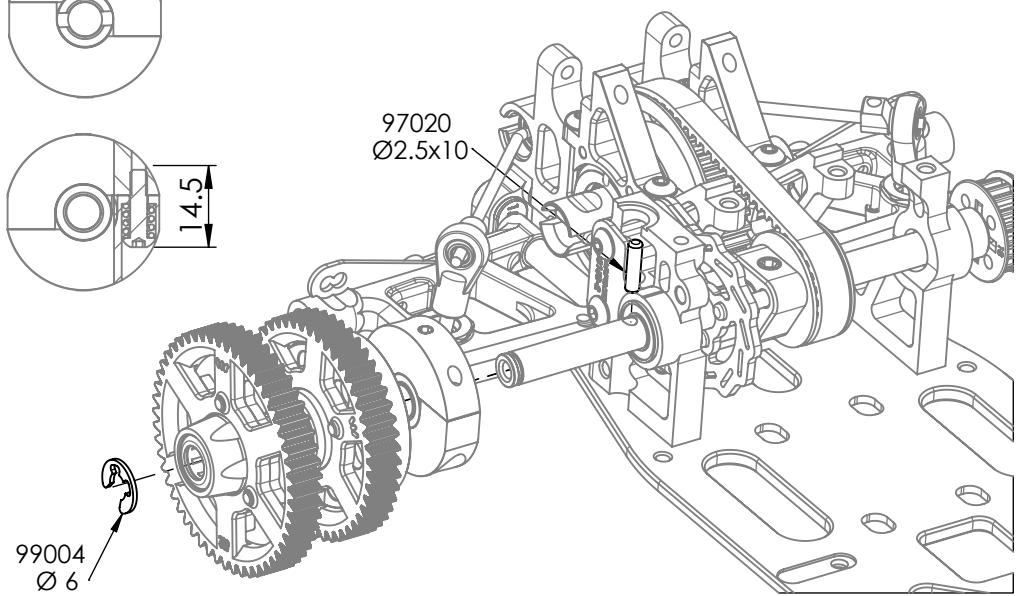
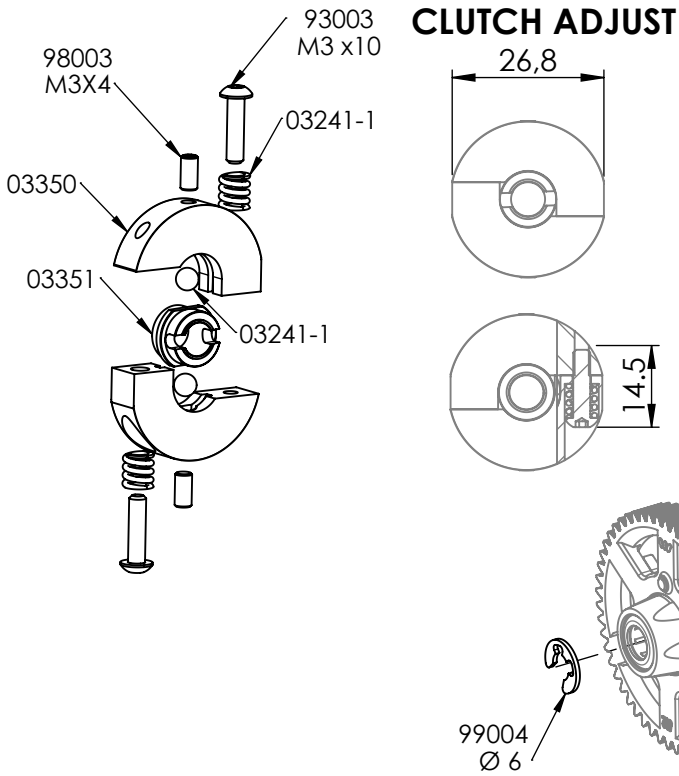
REAR ANTI ROLL BAR

ANTI ROLL BAR		
COD	Ø	
03378	Ø 2	OPTIONAL
03378-3	Ø 2.3	STANDARD IN KIT
03378-6	Ø 2.6	OPTIONAL



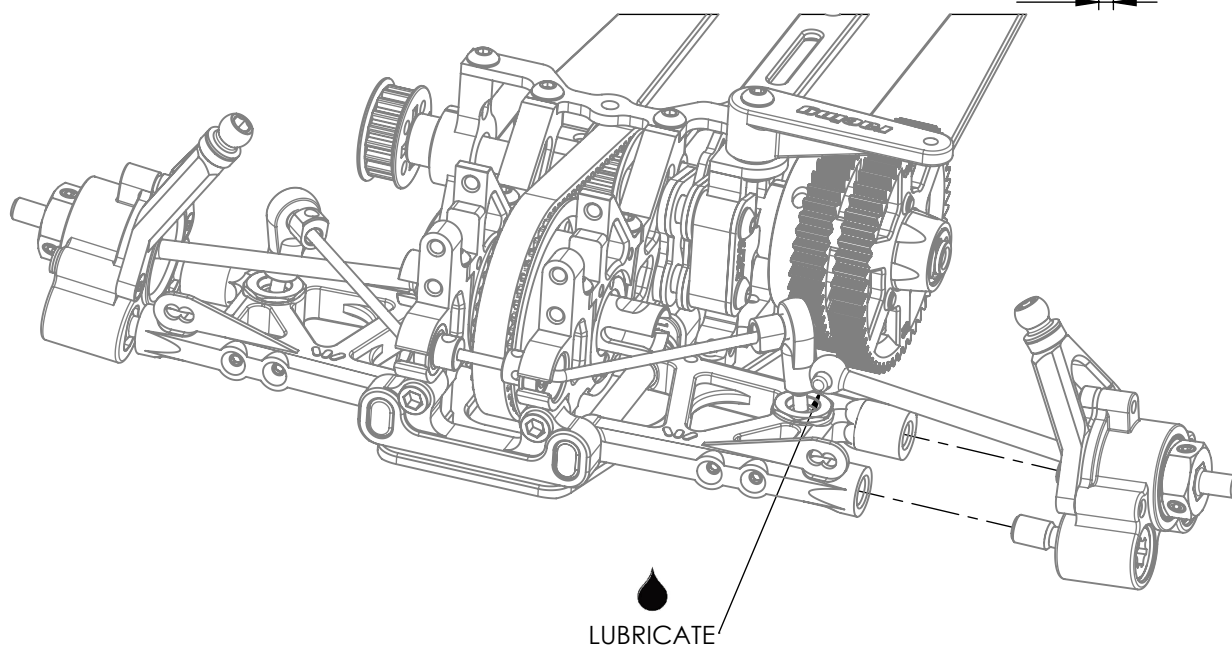
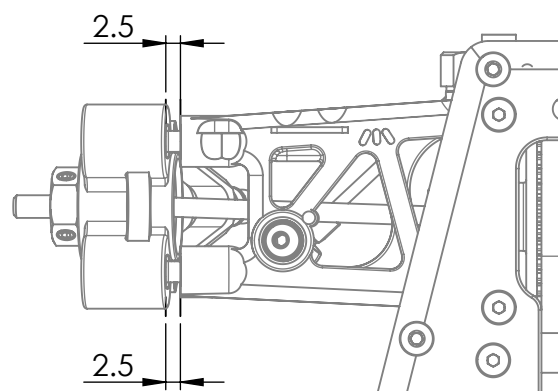
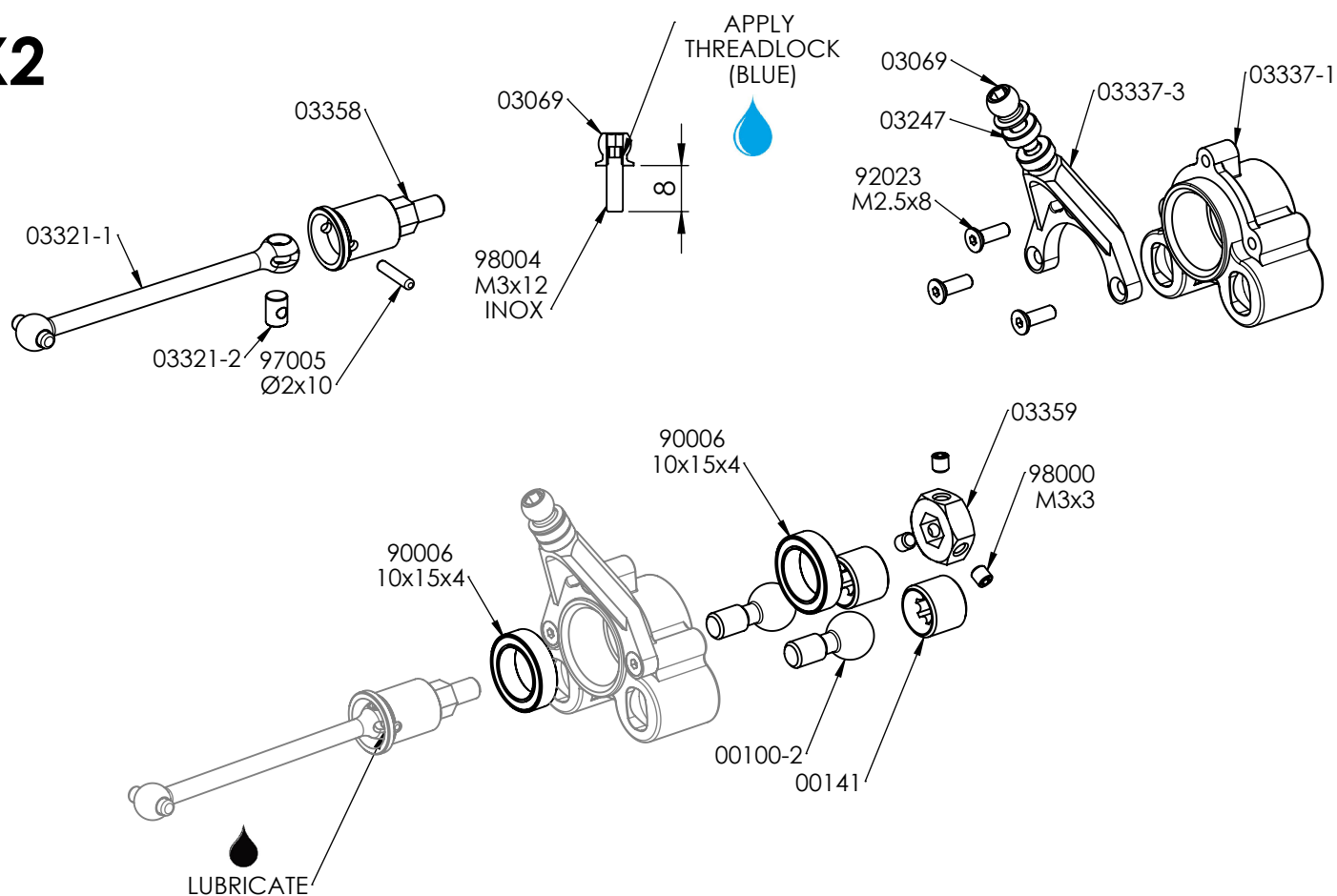


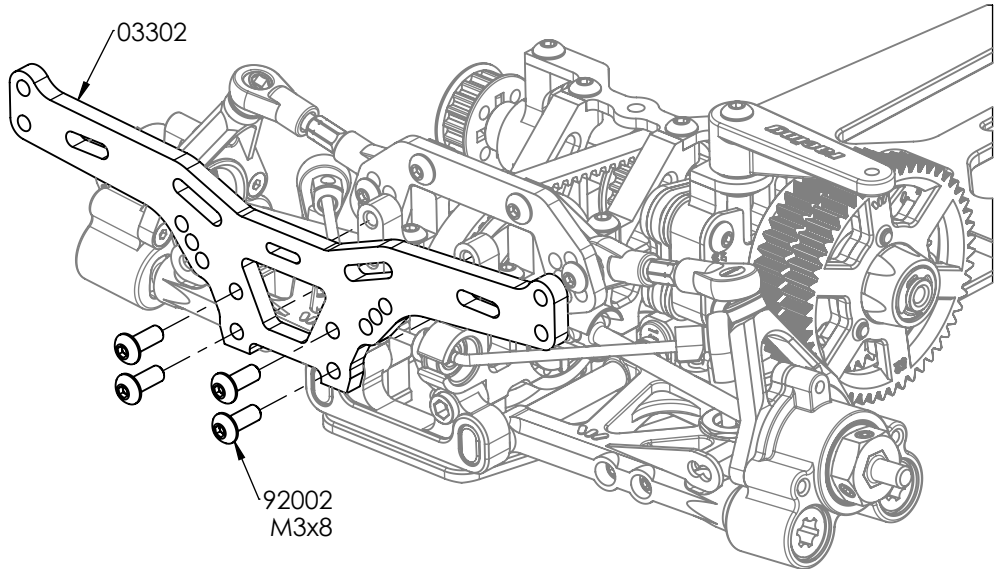
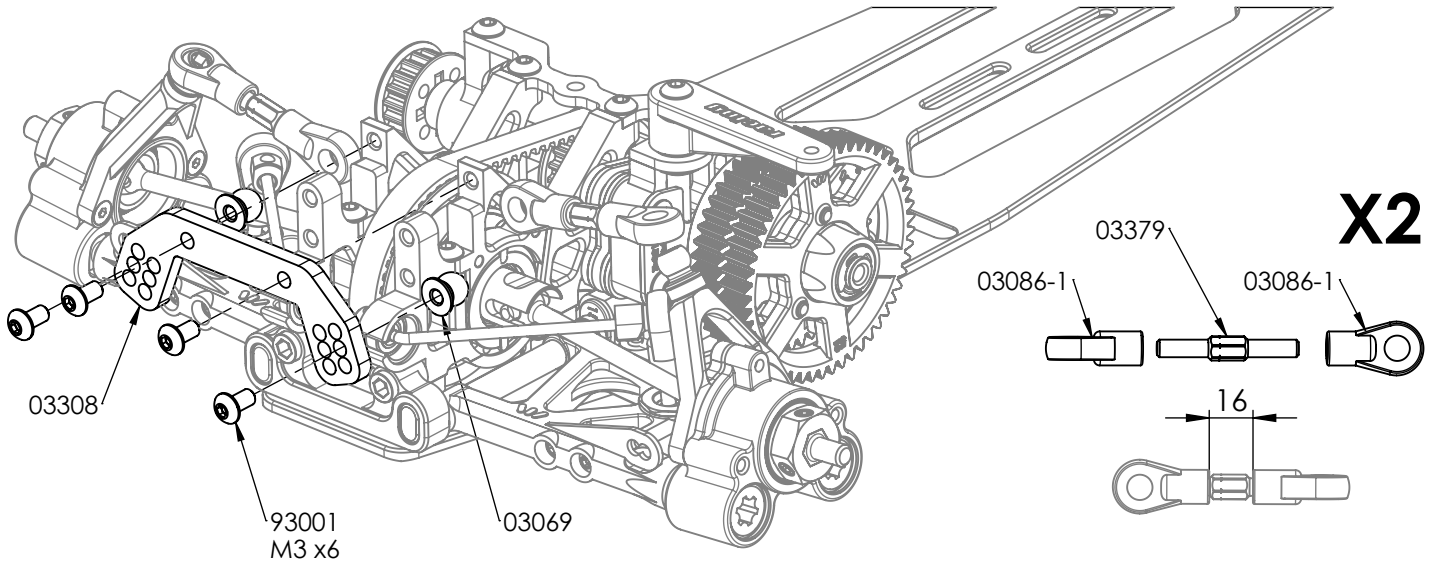
CLUTCH ADJUST



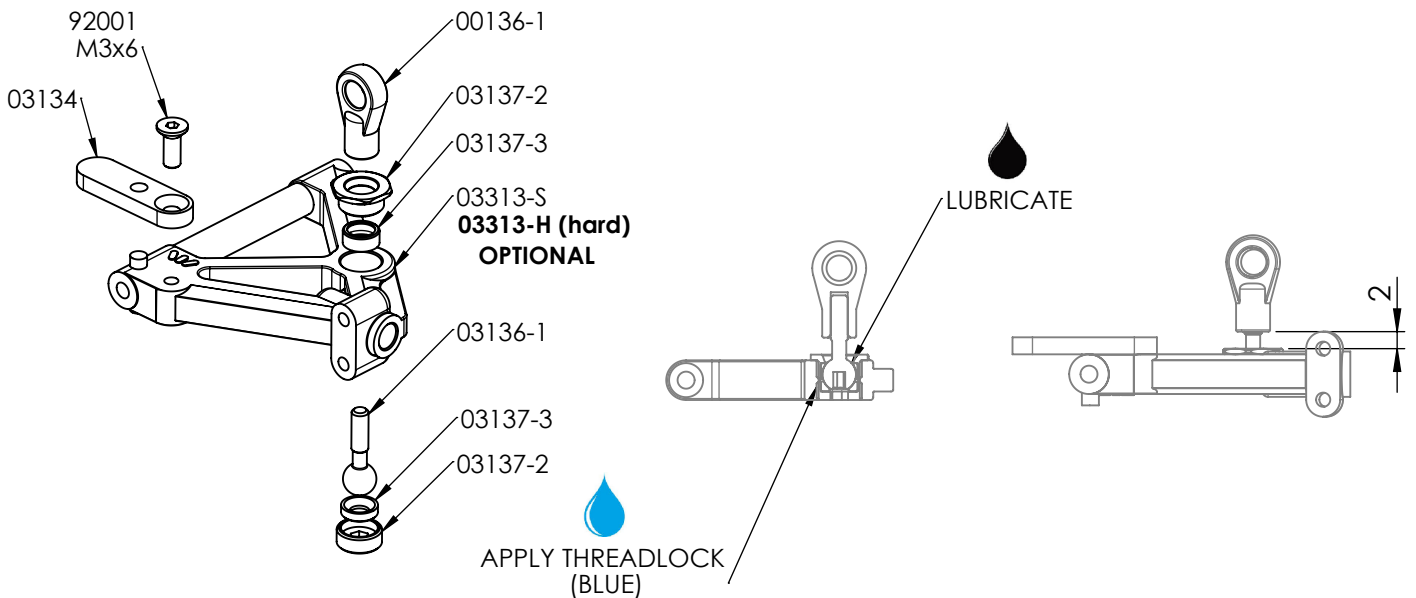
SPEED GEAR					
COD (1ST)			COD (2ND)		
03347-52	52T	OPTIONAL	03347-47	47T	OPTIONAL
03347-53	53T	STANDARD	03347-48	48T	STANDARD
03347-54	54T	OPTIONAL	03347-49	49T	OPTIONAL

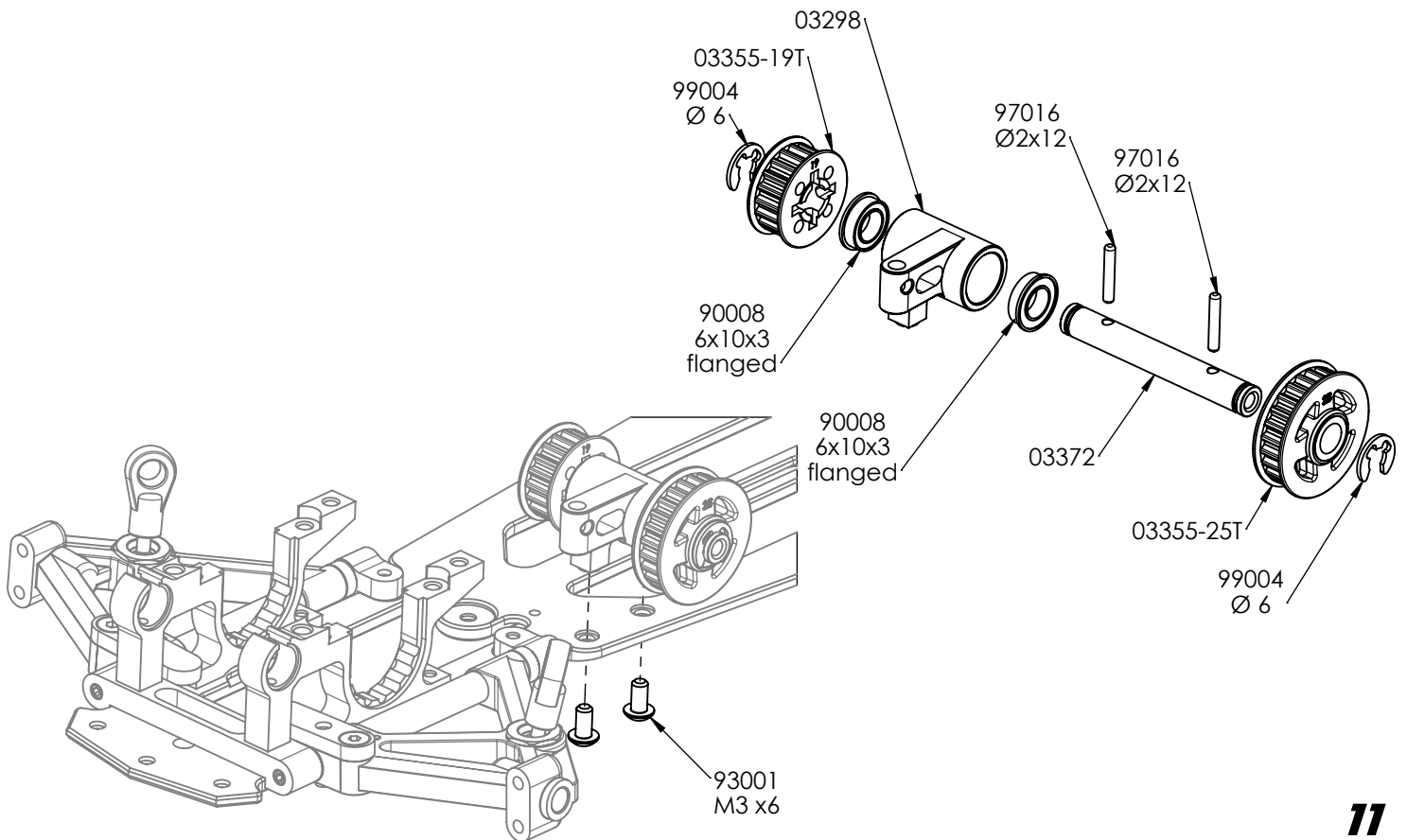
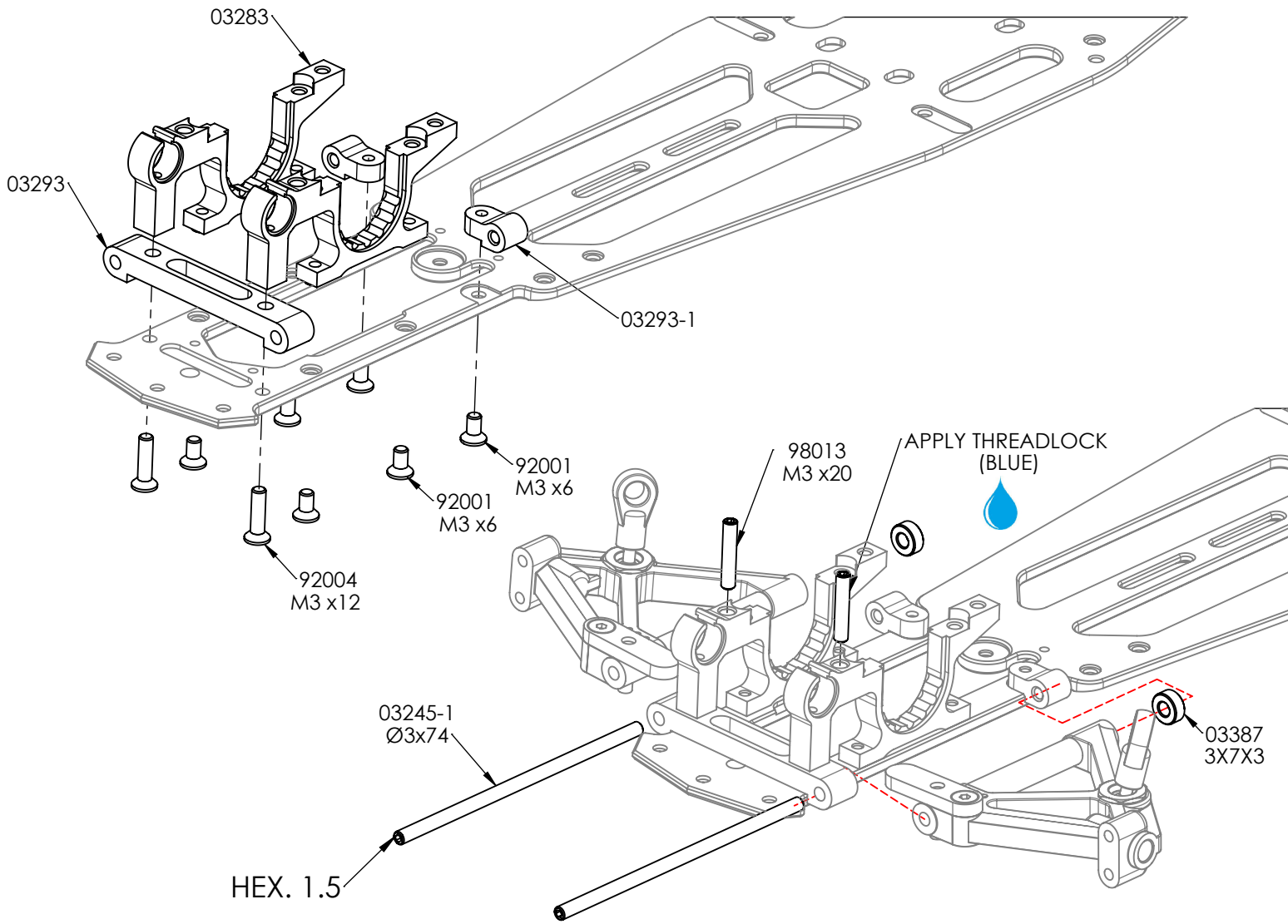
X2

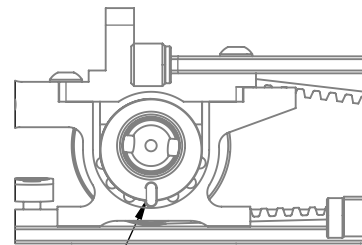
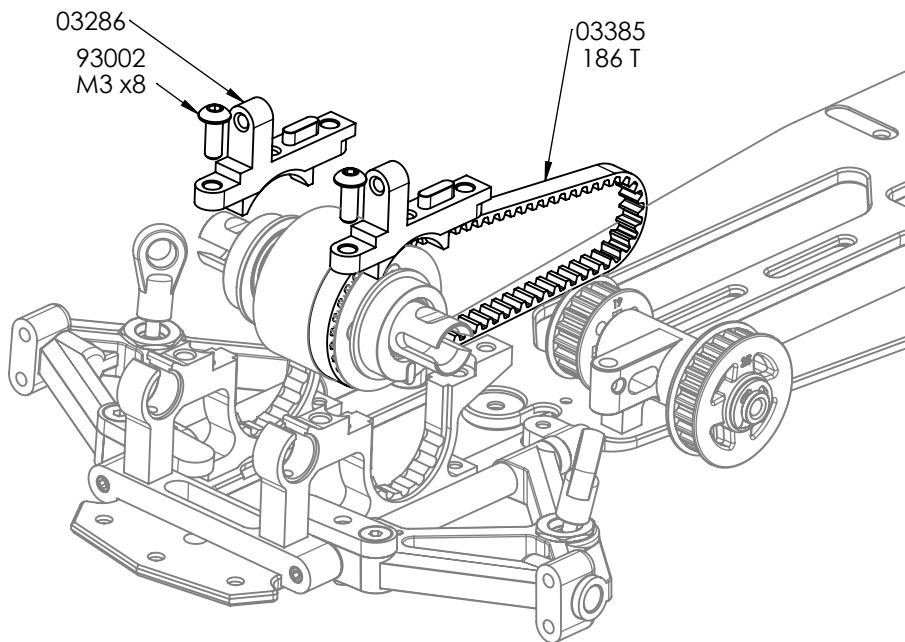




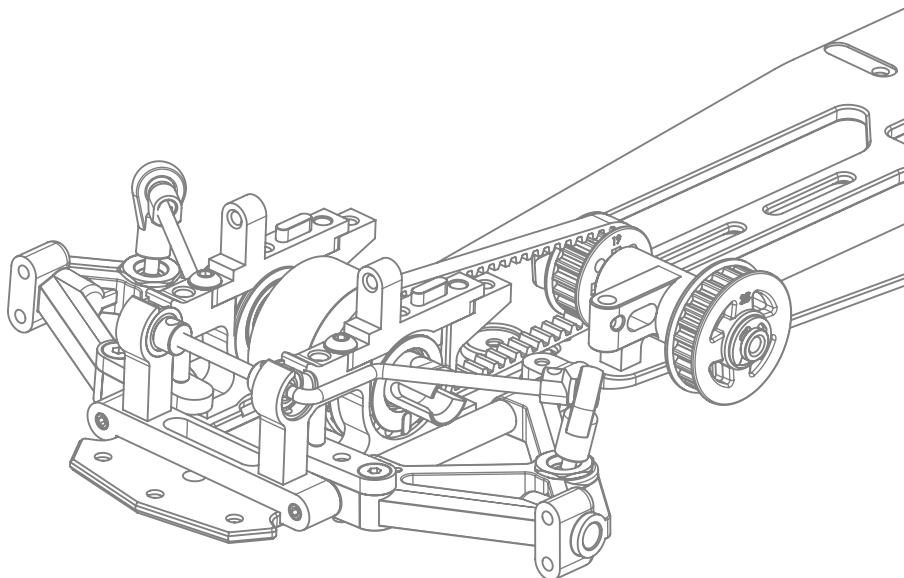
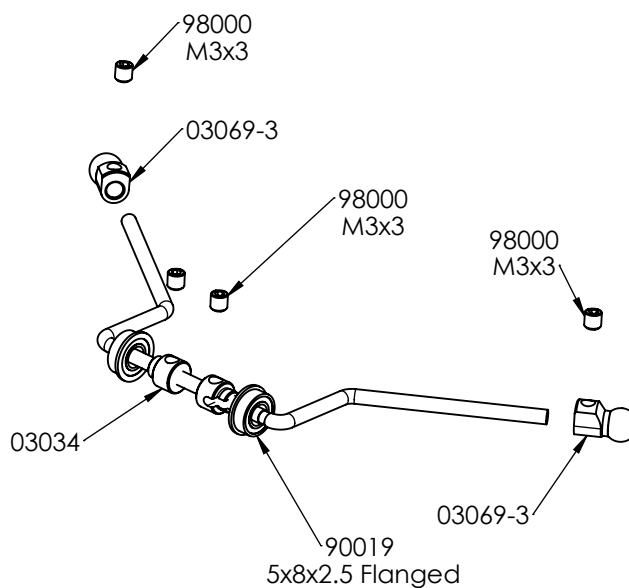
X2



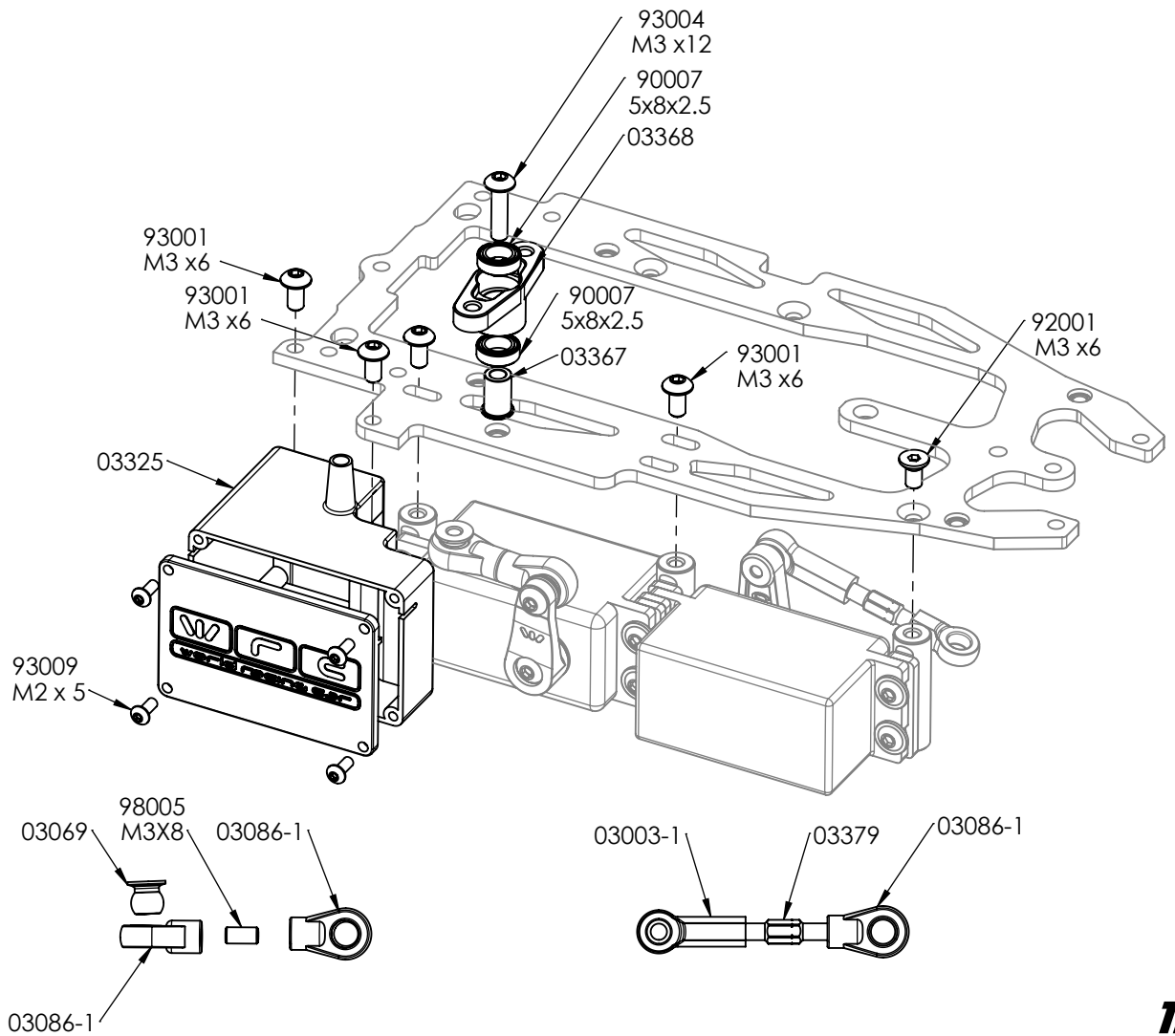
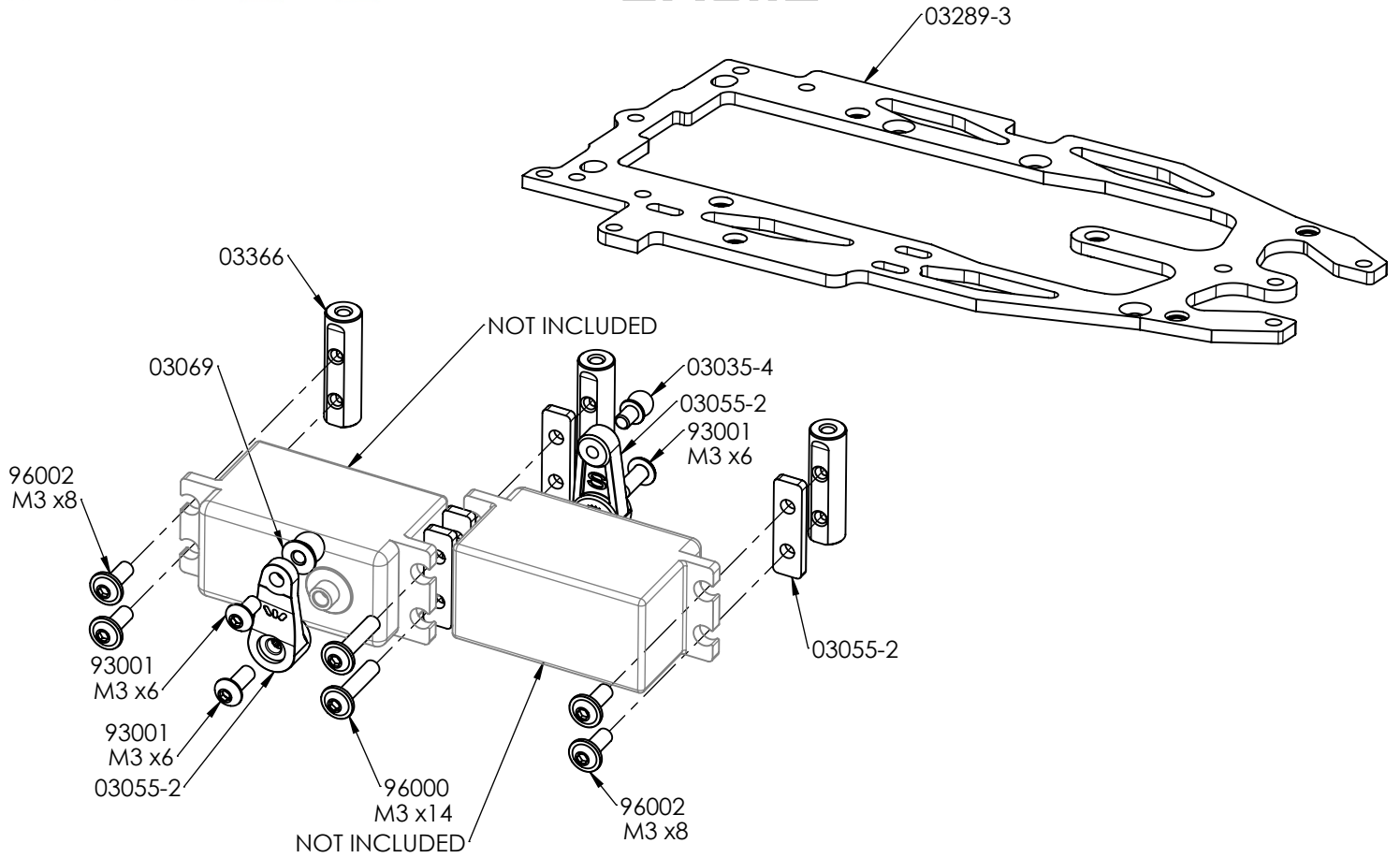


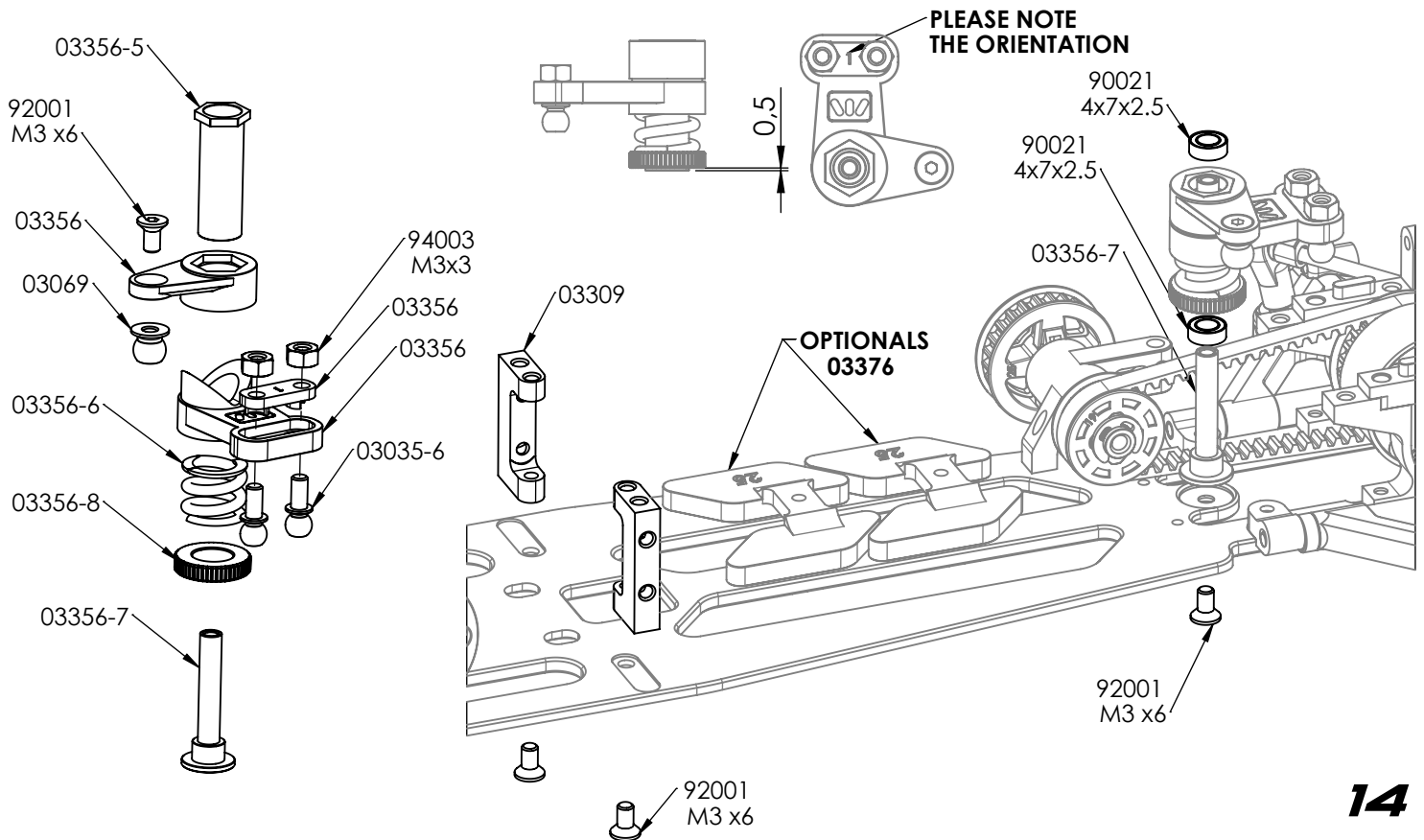
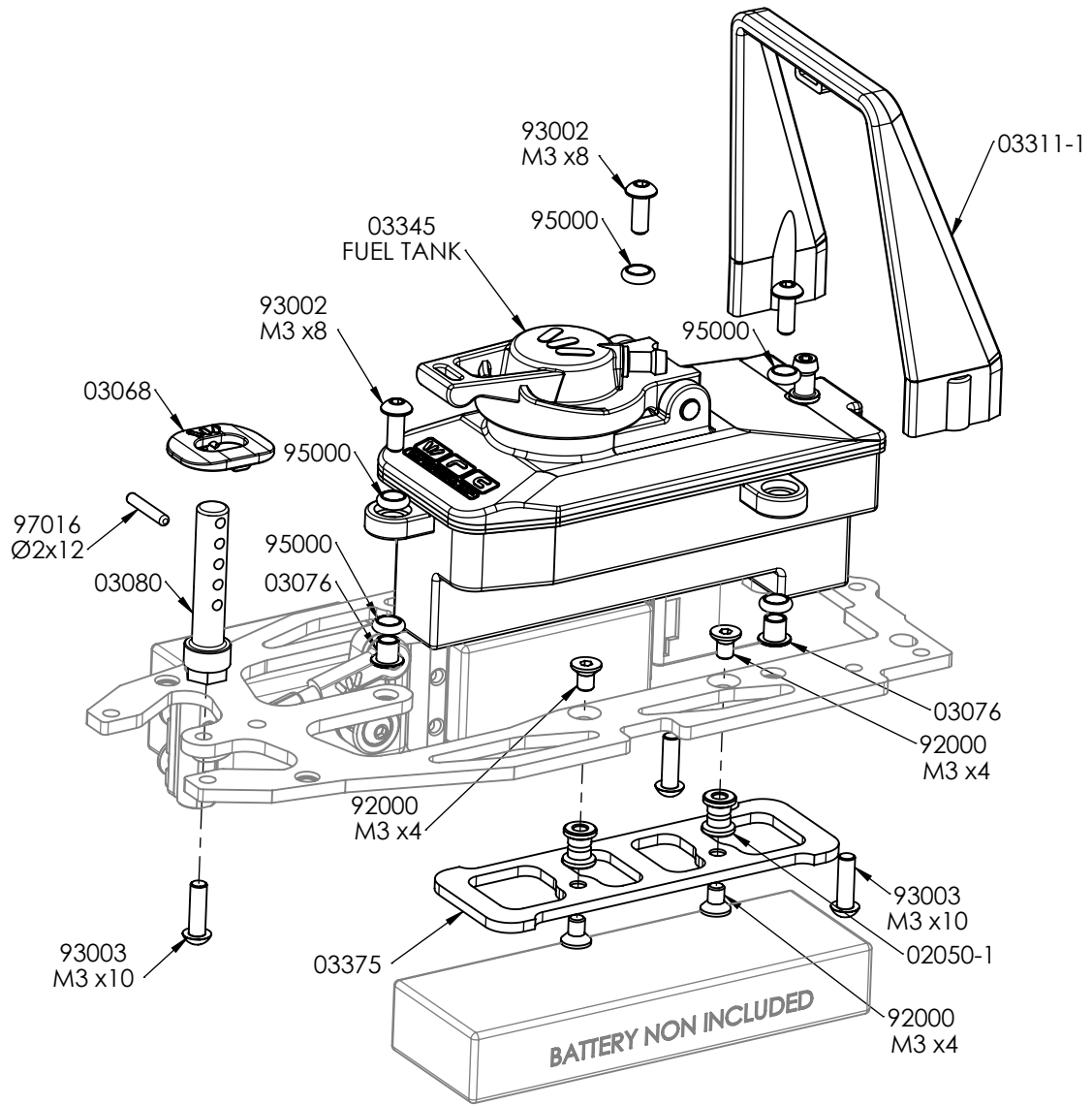


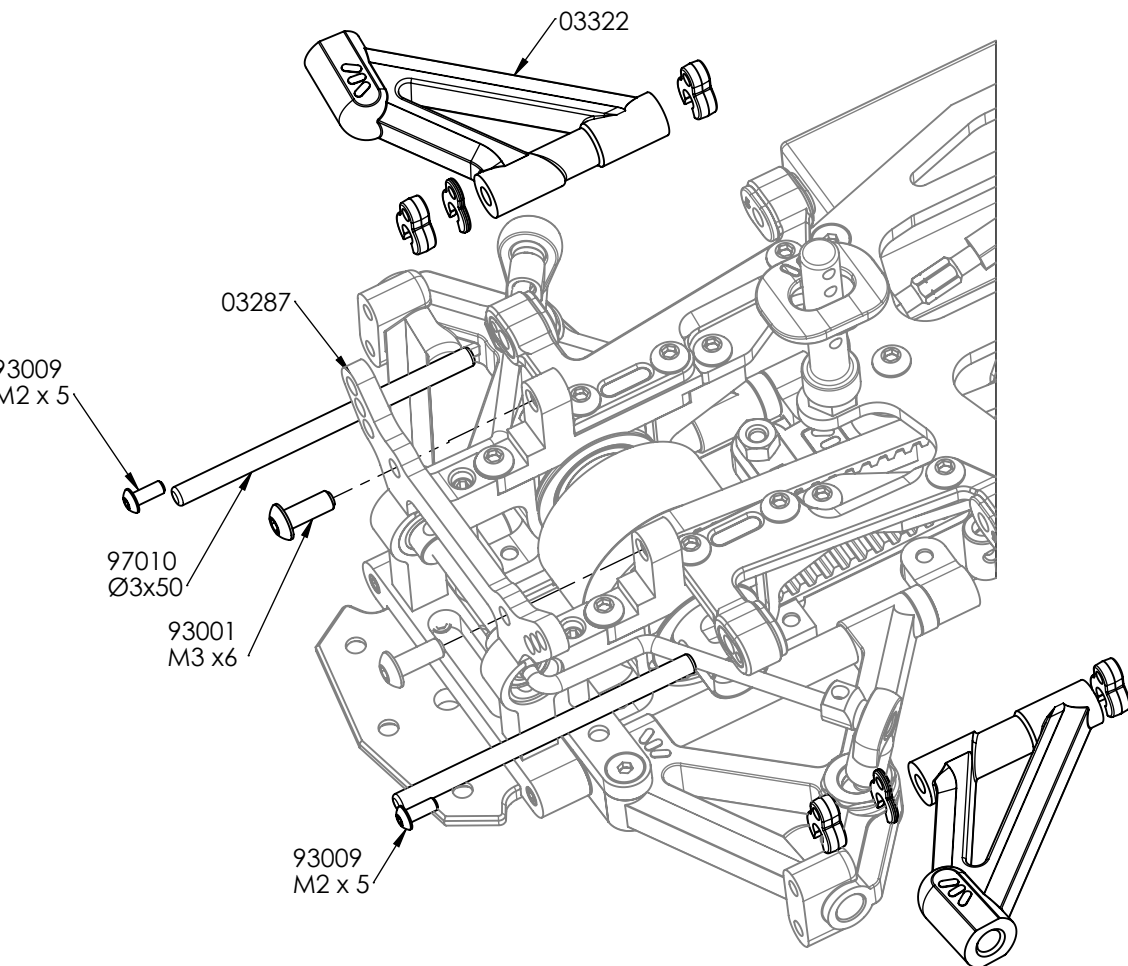
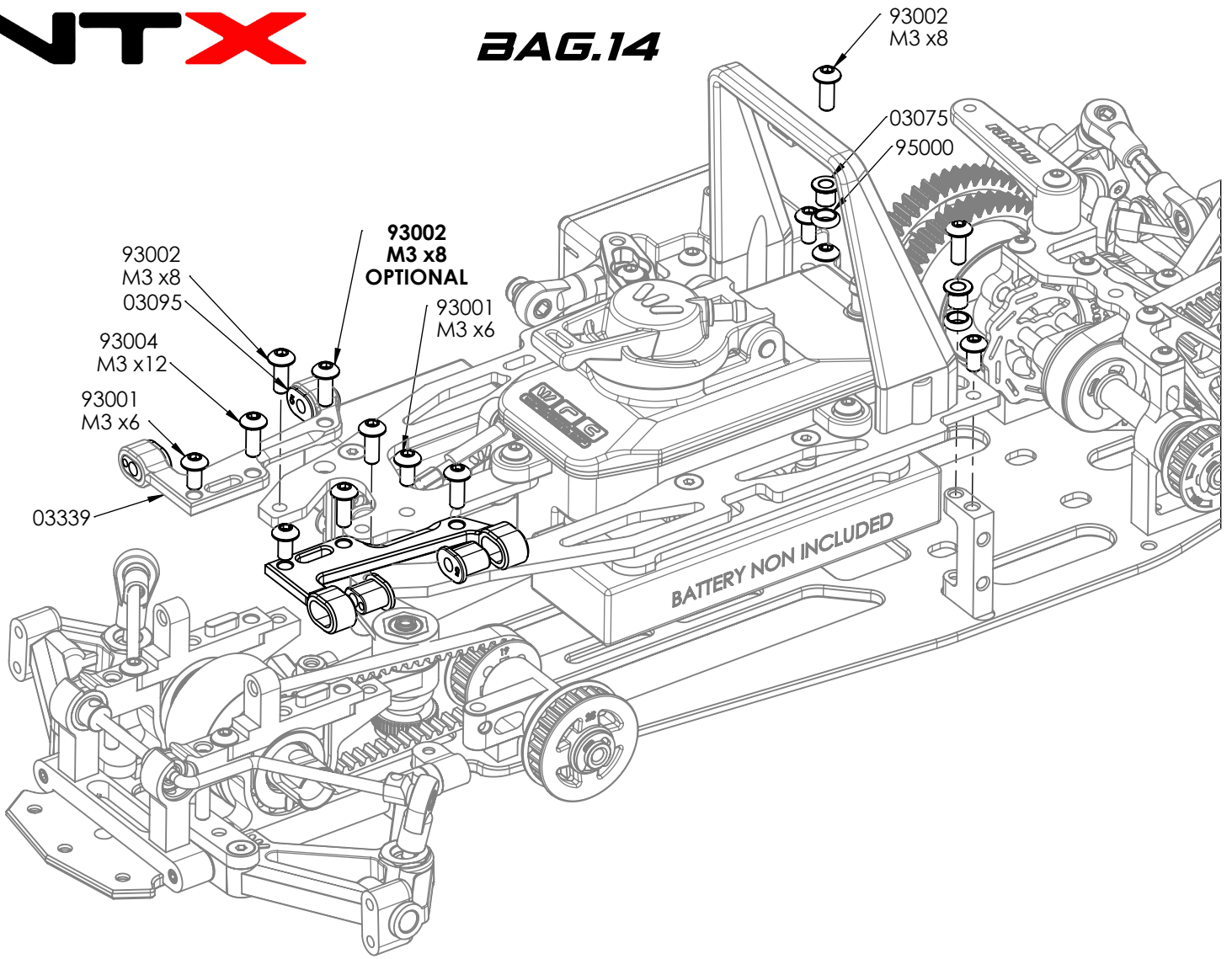
PLEASE NOTE ORIENTATION OF THE EXCENTERS



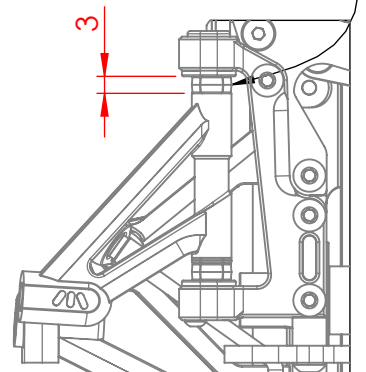
ANTI ROLL BAR		
COD	Ø	
03327-3	Ø 2.3	OPTIONAL
03327-6	Ø 2.6	STANDARD IN KIT
03327-8	Ø 2.8	OPTIONAL



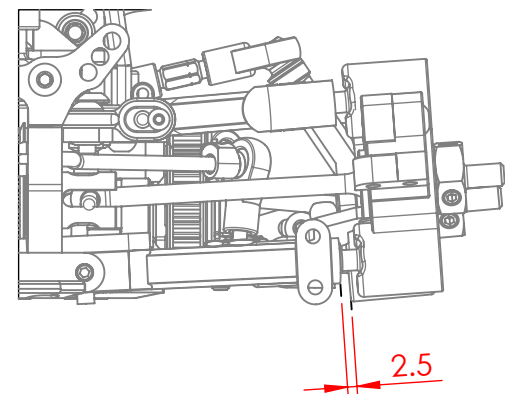
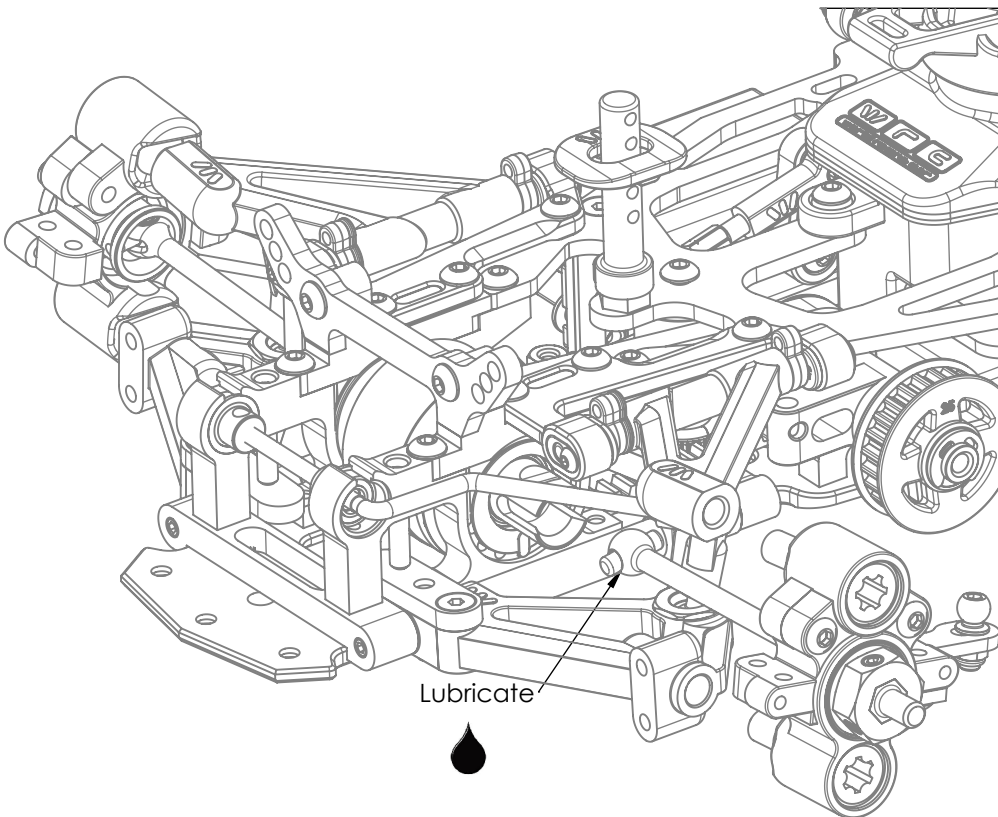
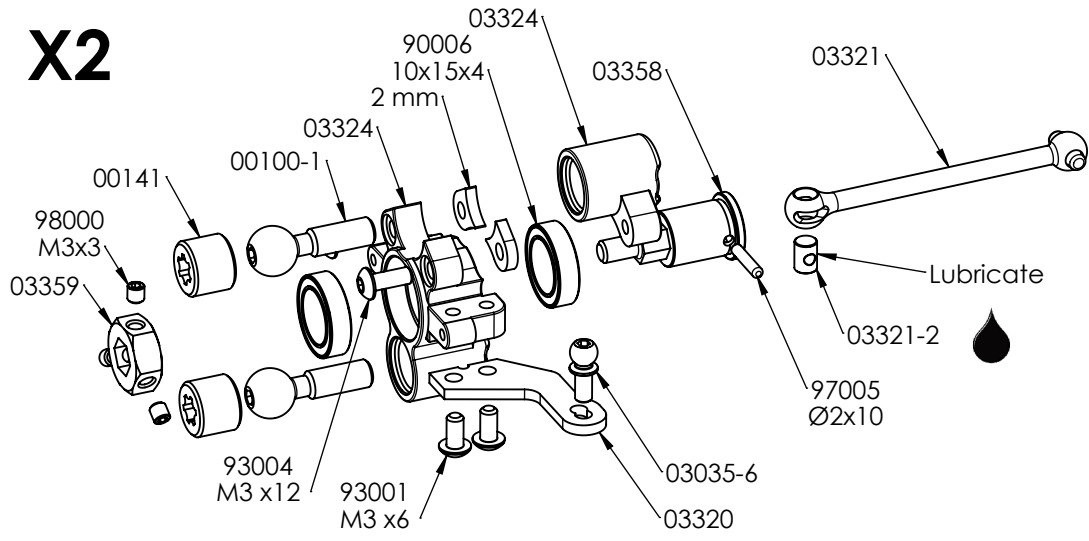


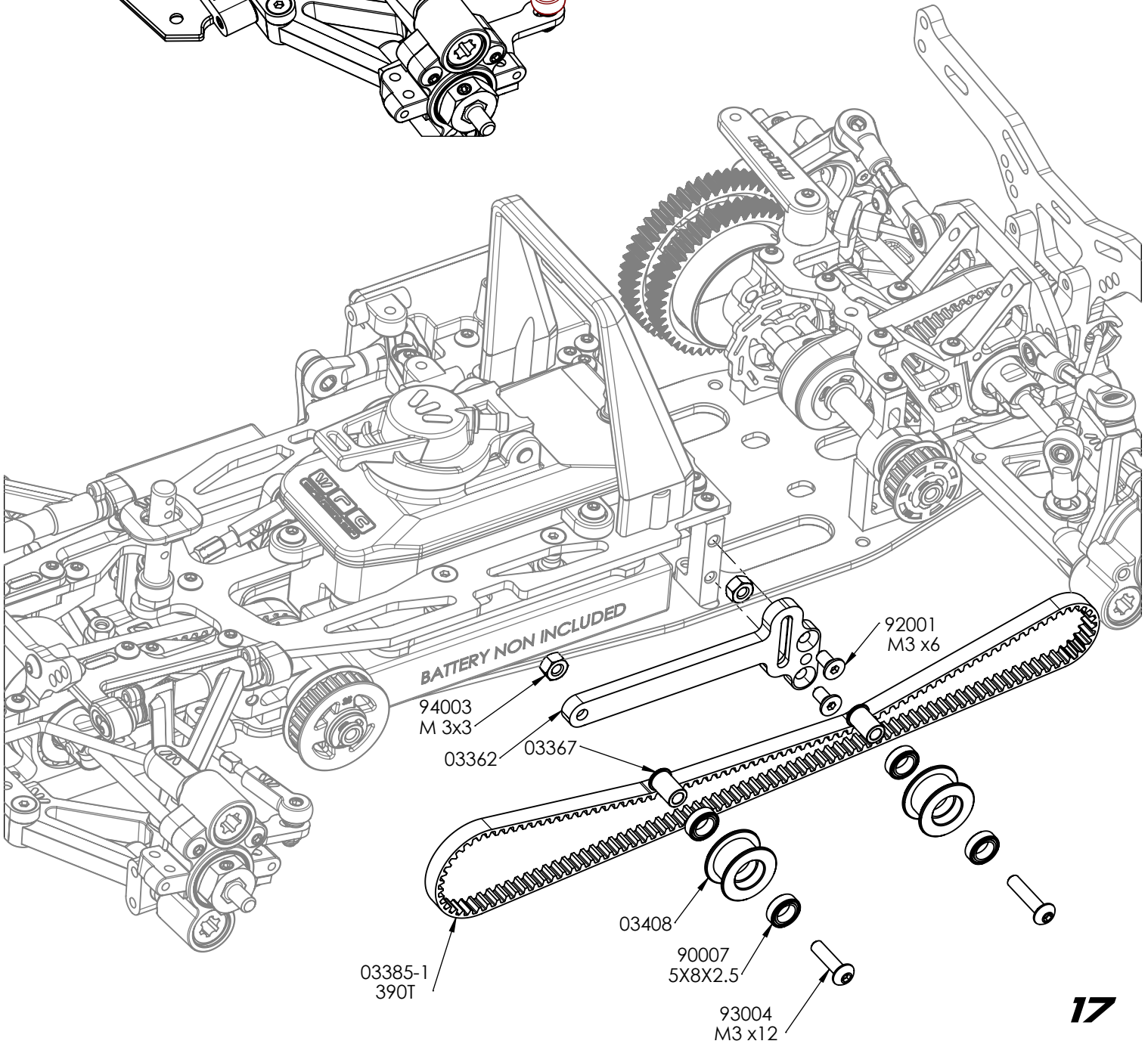
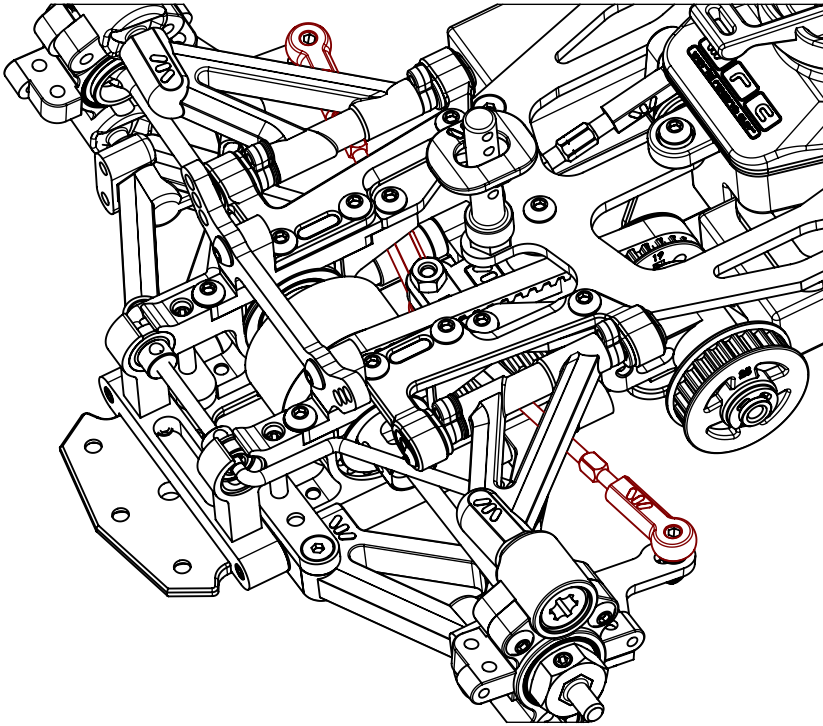
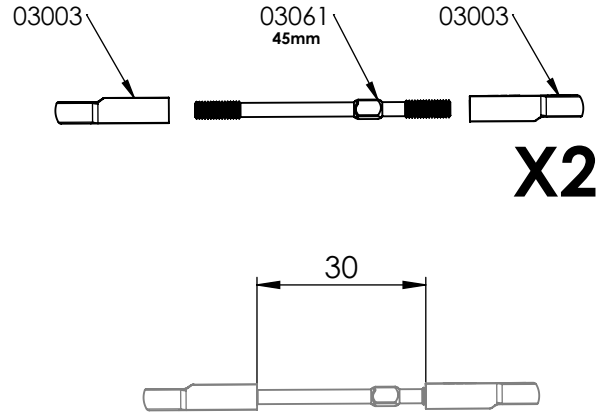


PLEASE NOTE THE POSITION OF THE CASTER SCHIMS

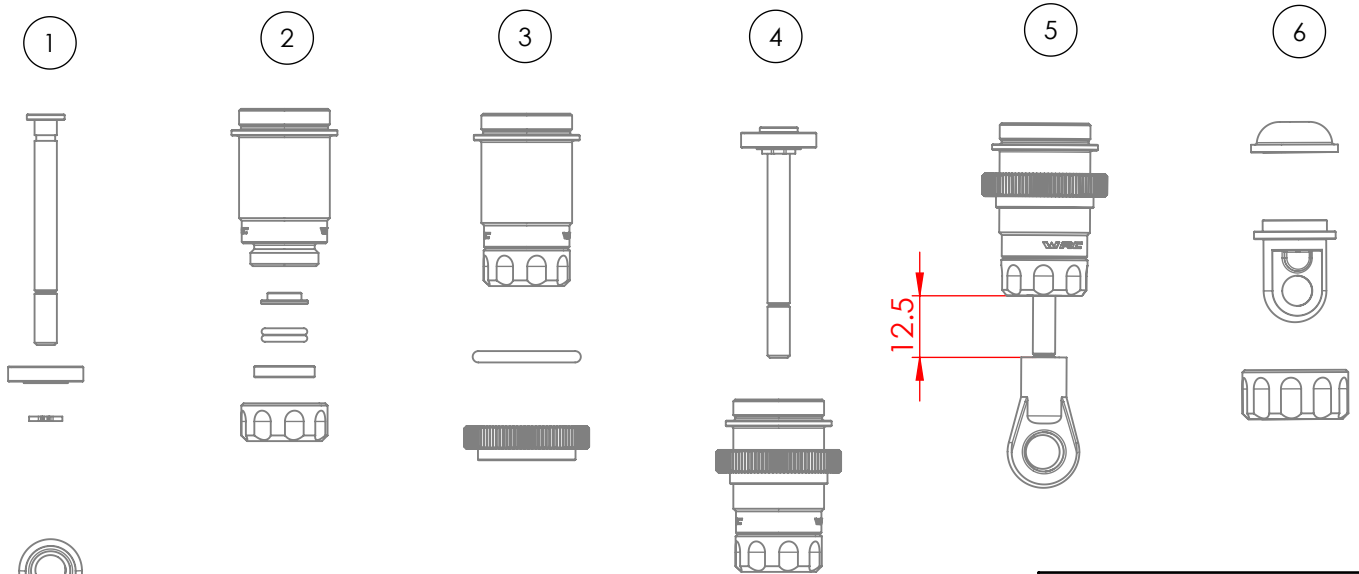
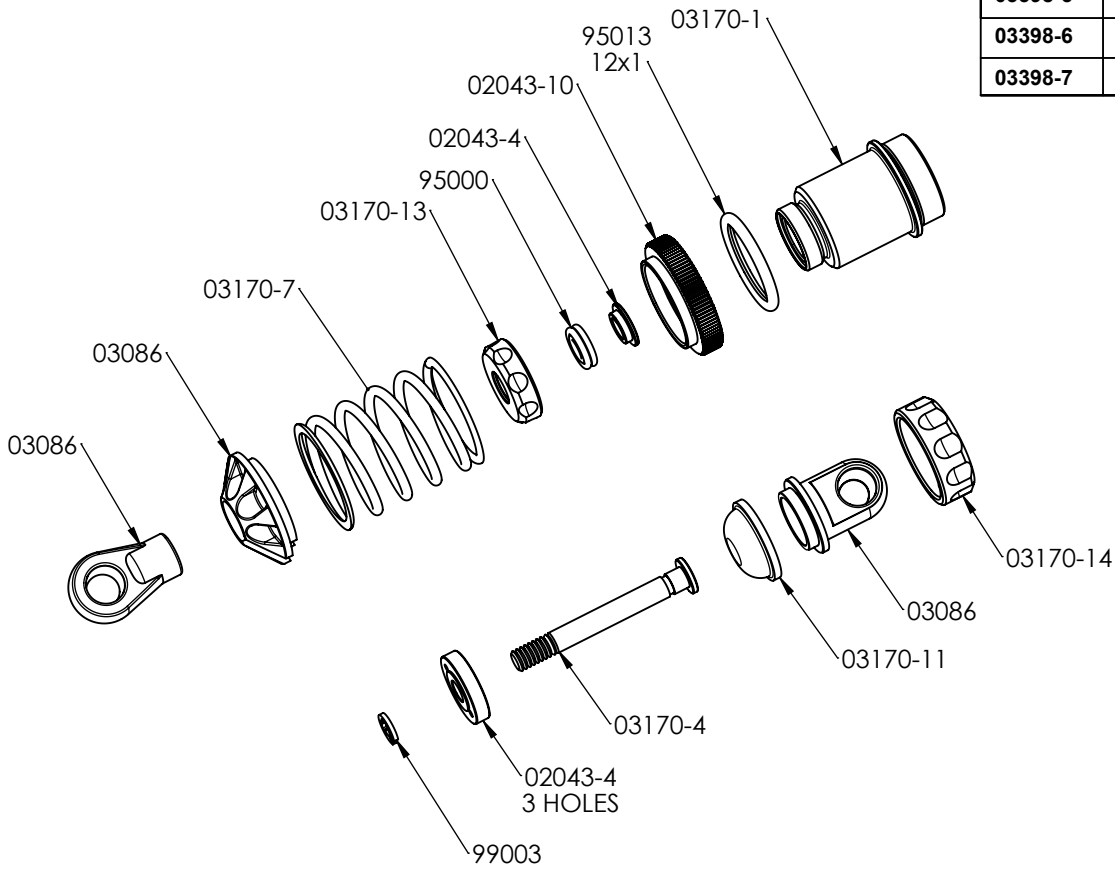


X2





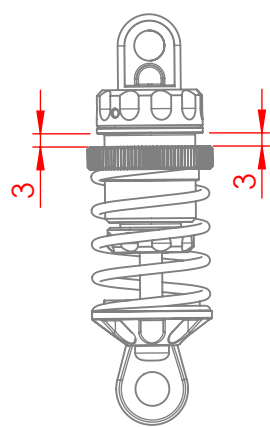
SPRINGS		
COD	WIRE mm	COLOUR
03398-5	1.5	BLACK IN KIT
03398-6	1.6	WHITE
03398-7	1.7	RED



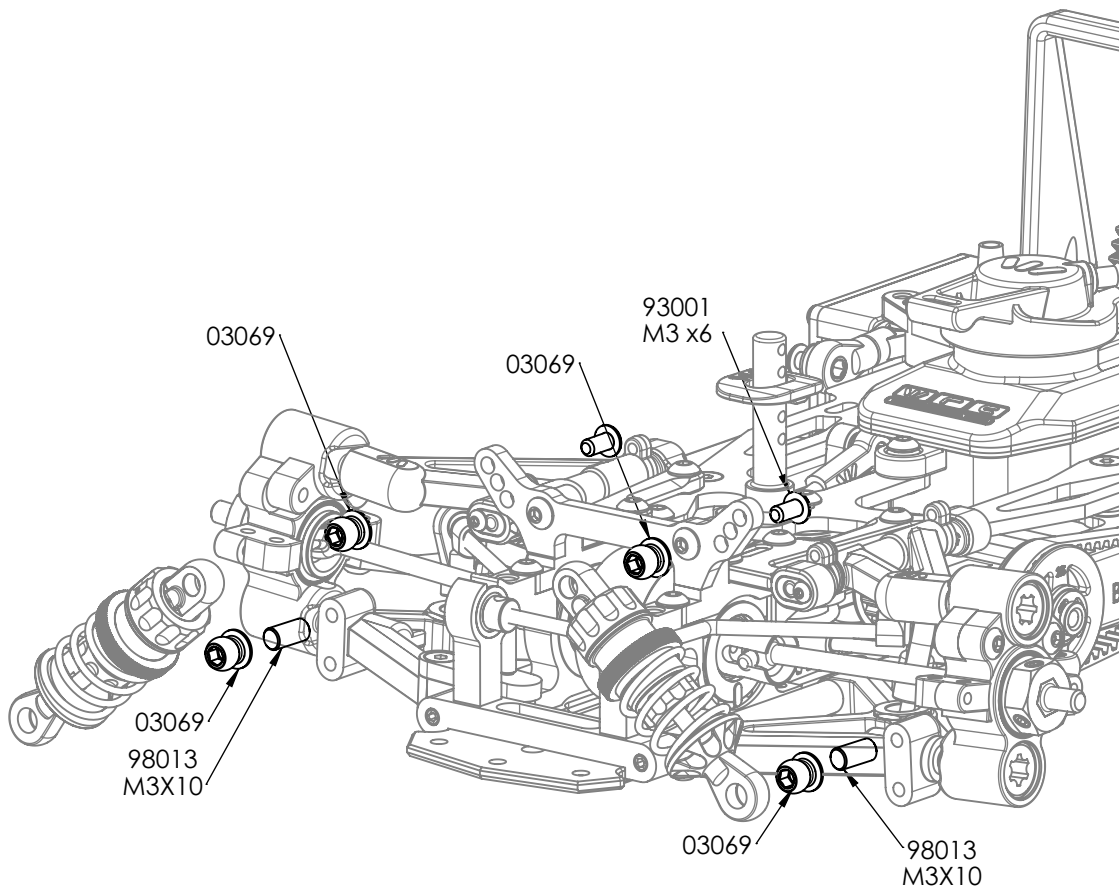
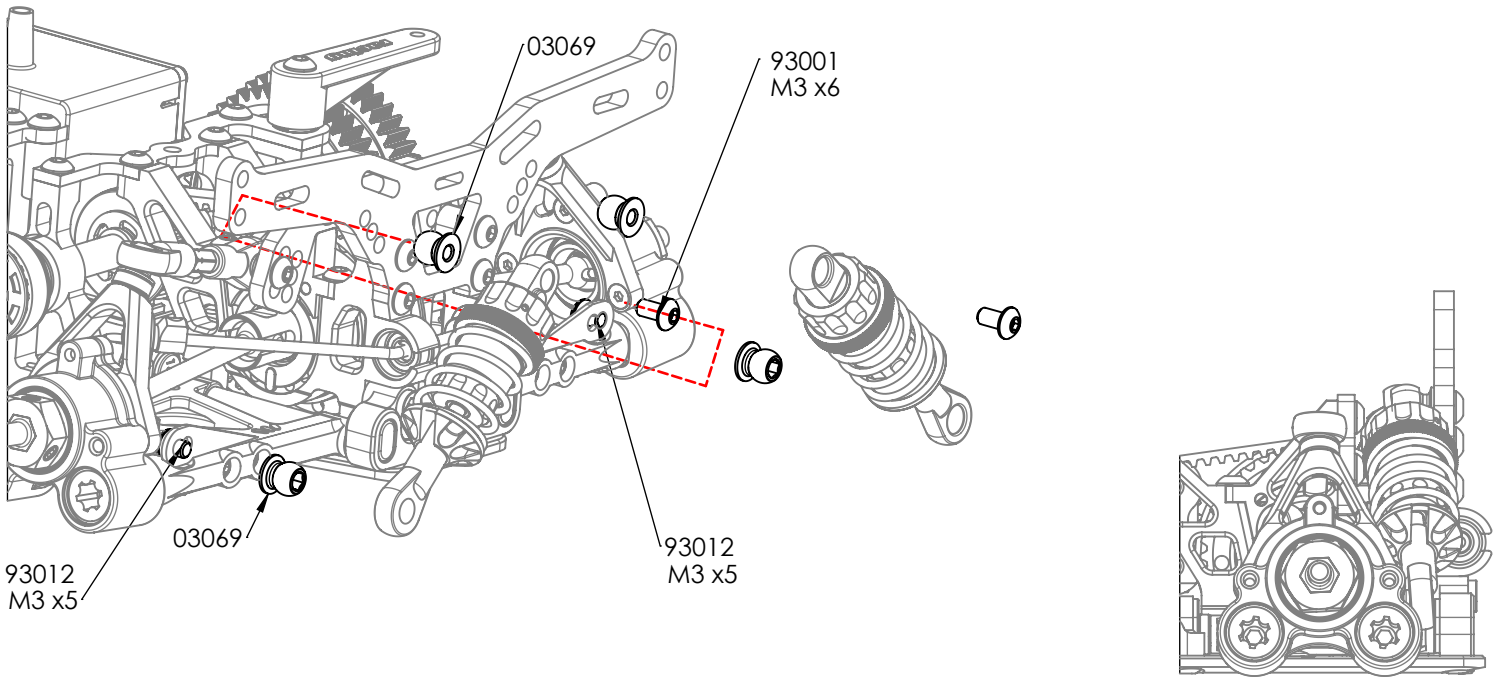
SHOCK FILLING

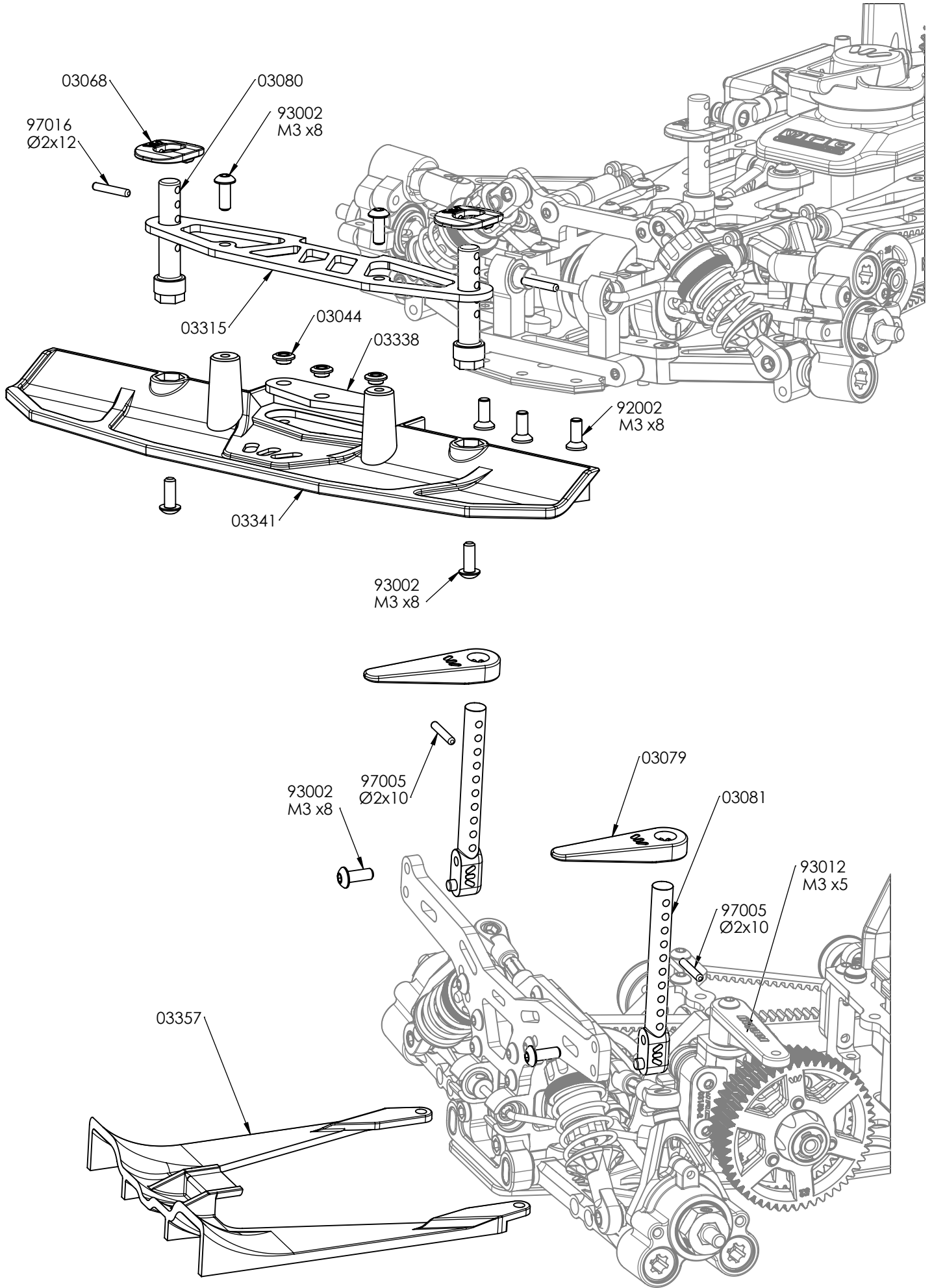
Fully extend the piston rod so the piston is at the bottom of the shock body.
 Hold the shock upright and fill the shock body with shock oil as in the picture.
 Let the oil settle and allow air bubbles to rise to the top.
 Slowly move the piston up and down until no more air bubbles appear.
 Add shock oil as necessary.
 Pull the piston rod most of the way out of the shock bod.
 Let the shock rest for 5 minutes to allow the air bubbles to scape.

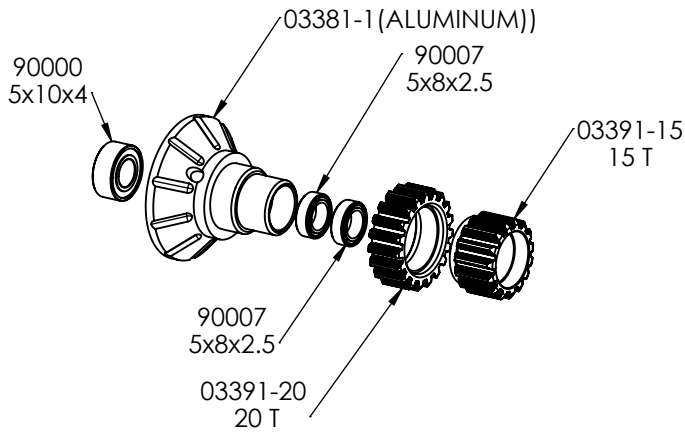
FRONT - REAR



P-ONE SHOCKS OIL	
CODE	CST
SO-200	200
SO-300	300
SO-400	400
SO-500	500
SO-600	600
SO-700	700
SO-800	800 (IN KIT)

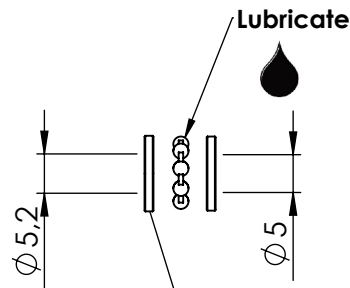
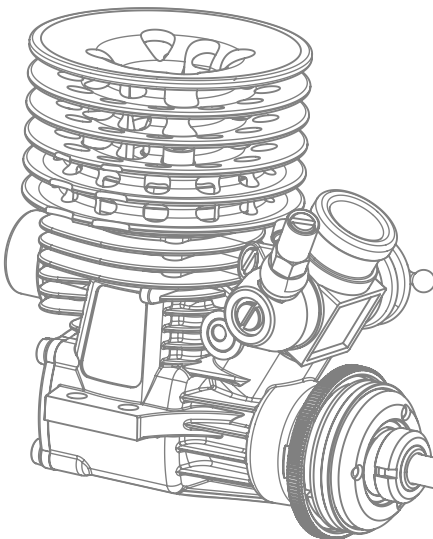
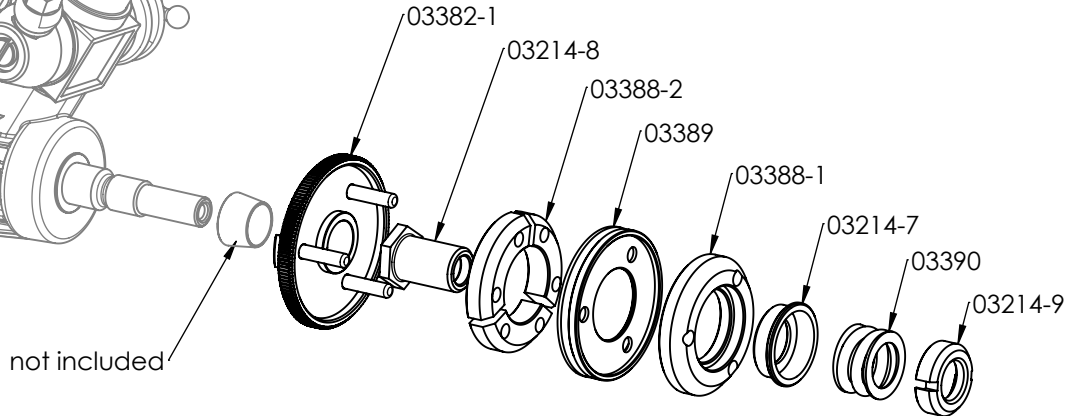
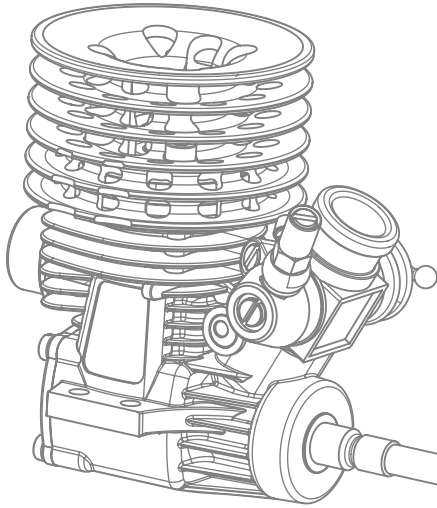
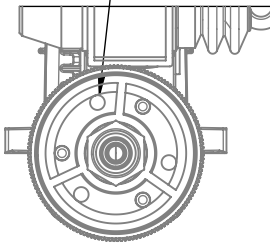




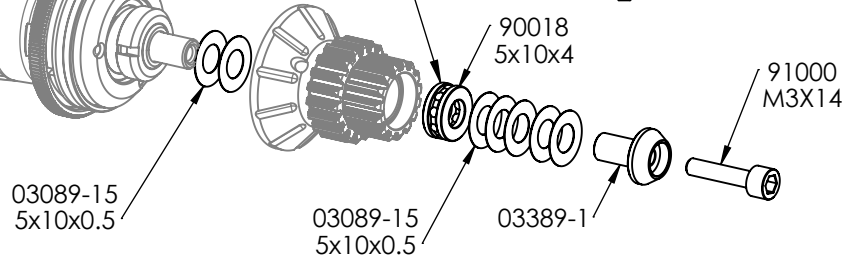
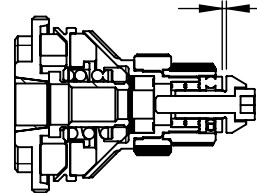


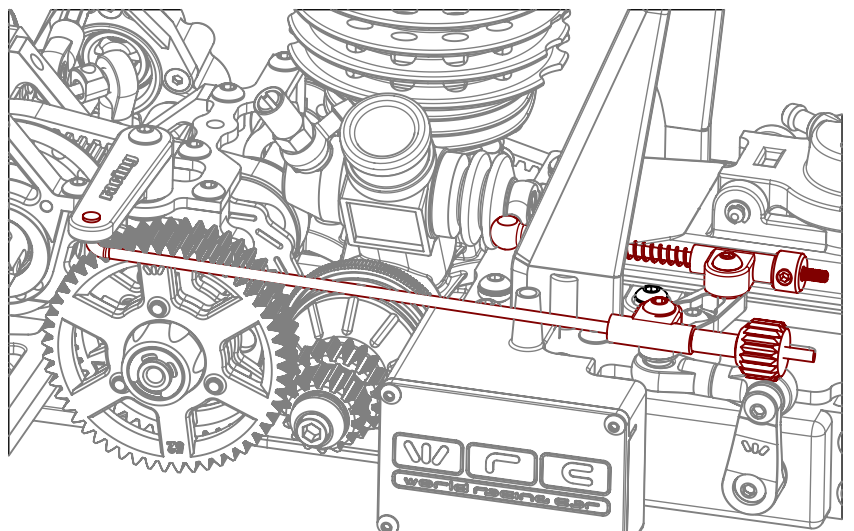
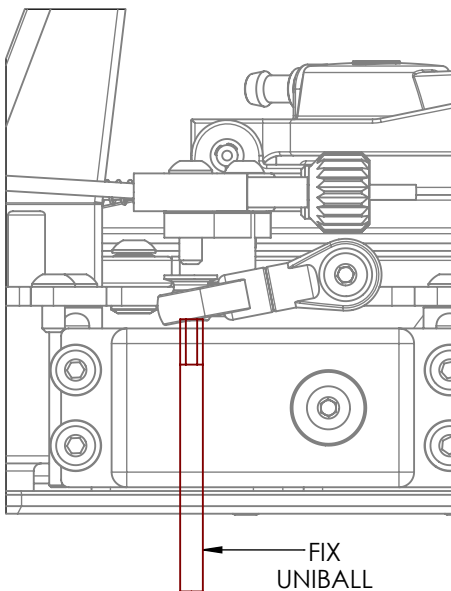
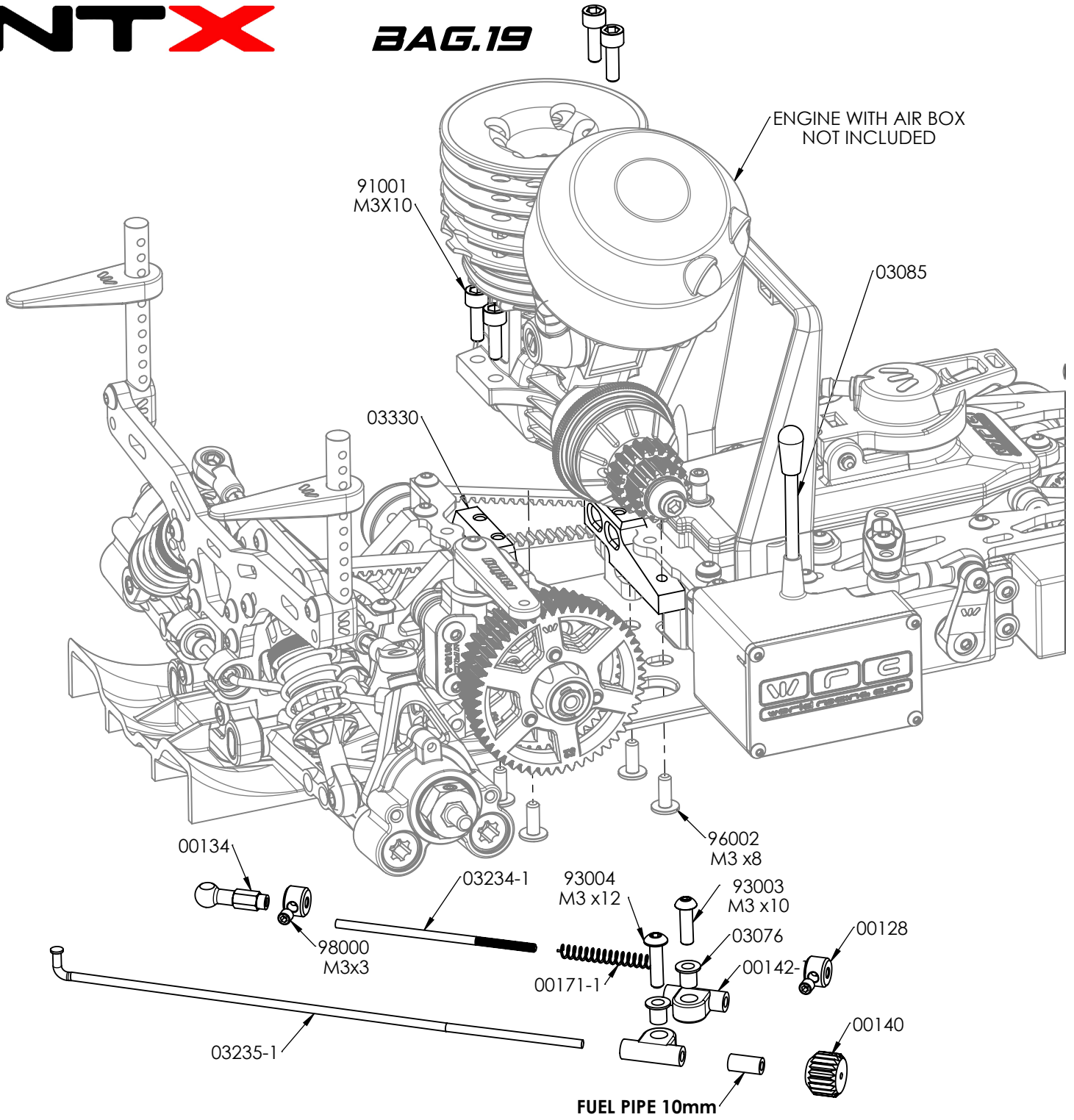
SPEED GEAR					
COD (1ST)			COD (2ND)		
03391-14	14T	OPTIONAL	03391-19	19T	OPTIONAL
03391-15	15T	STANDARD	03391-20	20T	STANDARD

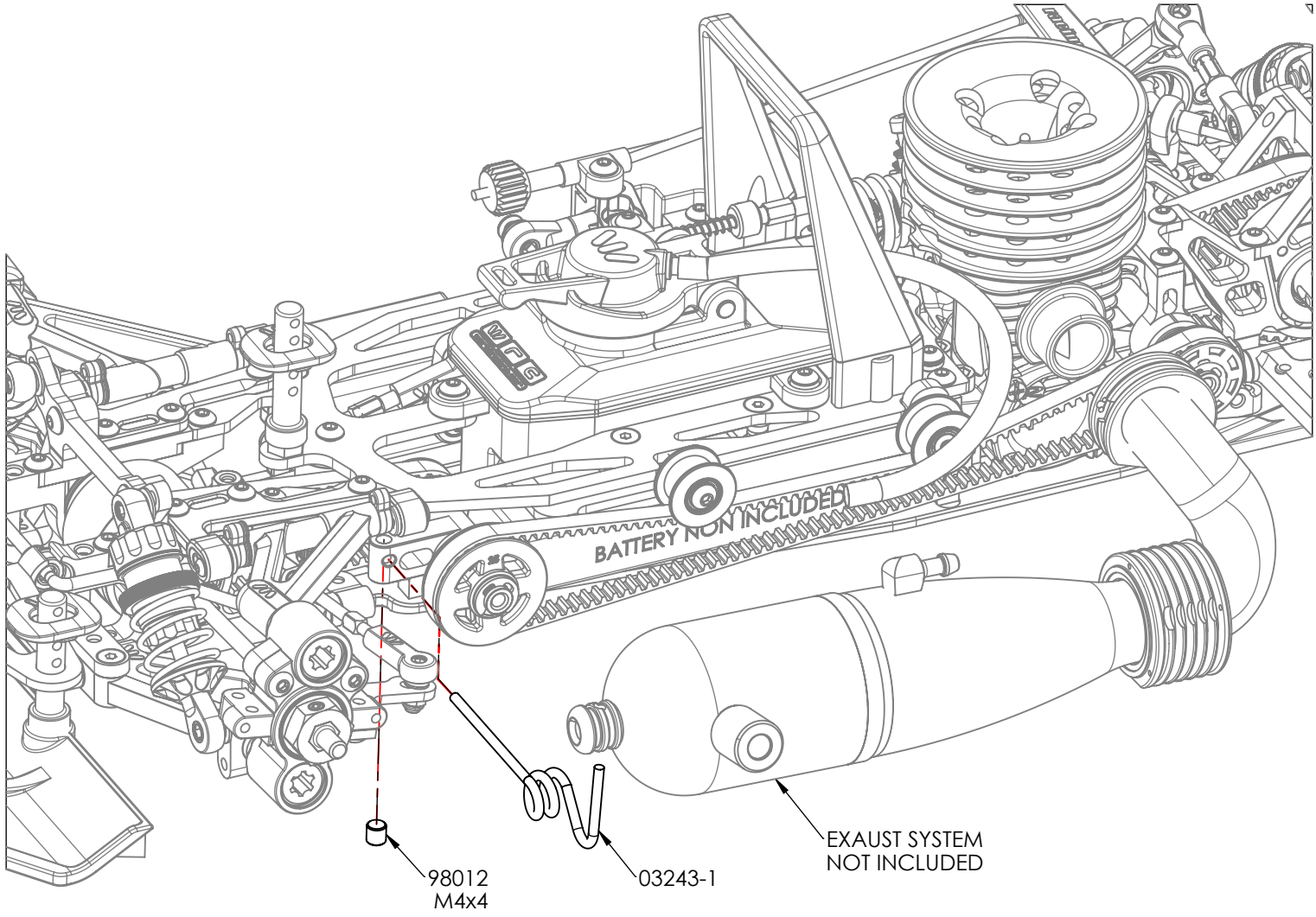
Please note the orientation of the flyweights. Use the right hole for having a more aggressive clutch



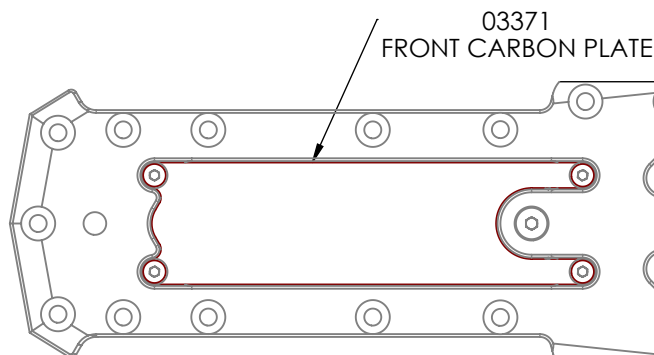
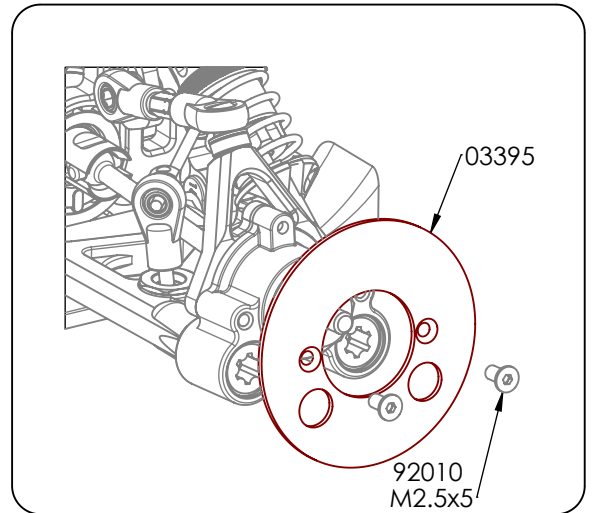
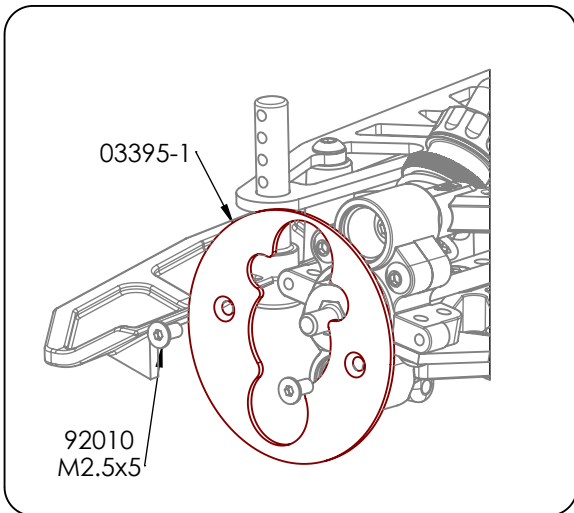
CHECK GAP. GAP SHOULD BE BETWEEN 0.5 AND 0.6 mm

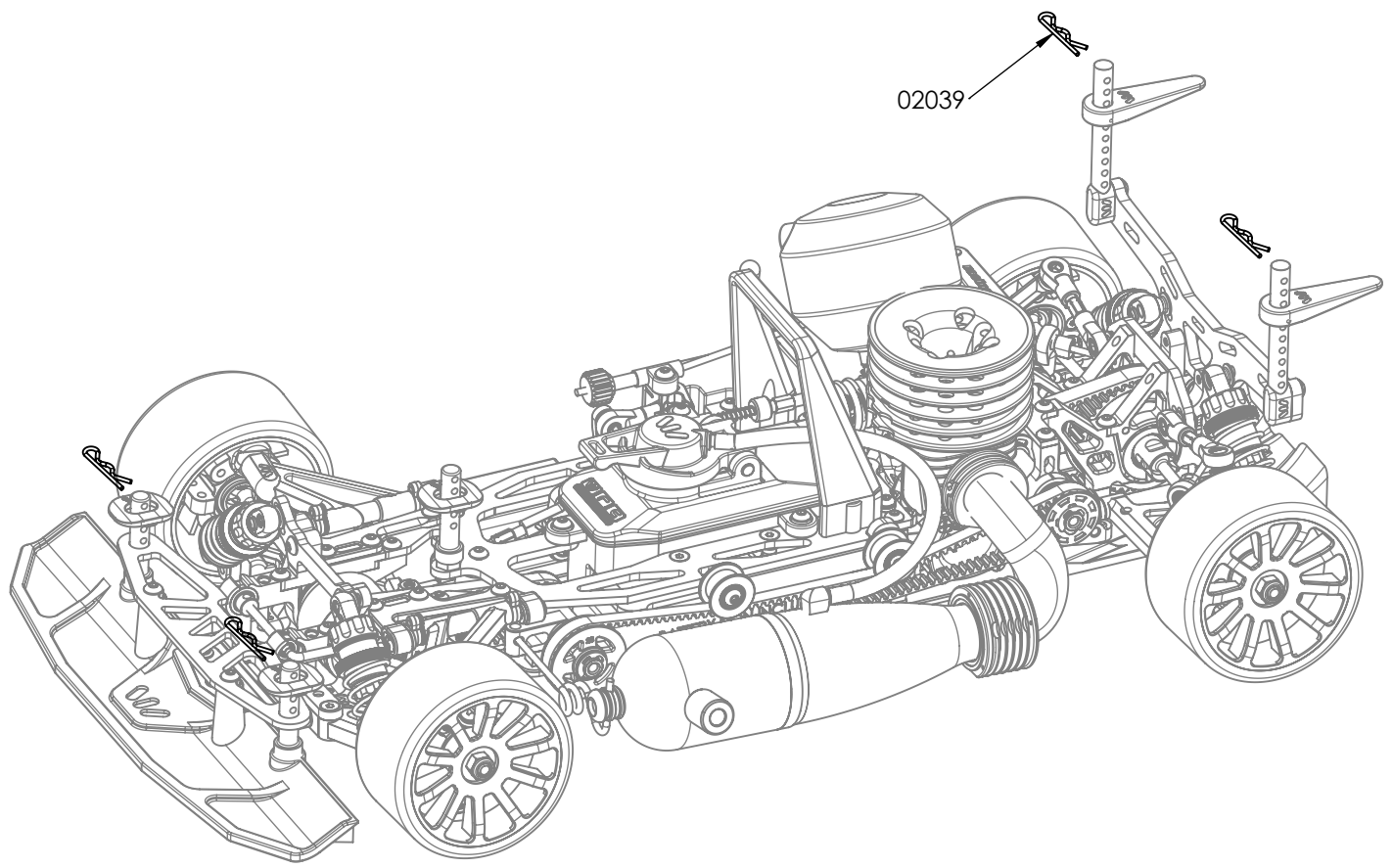
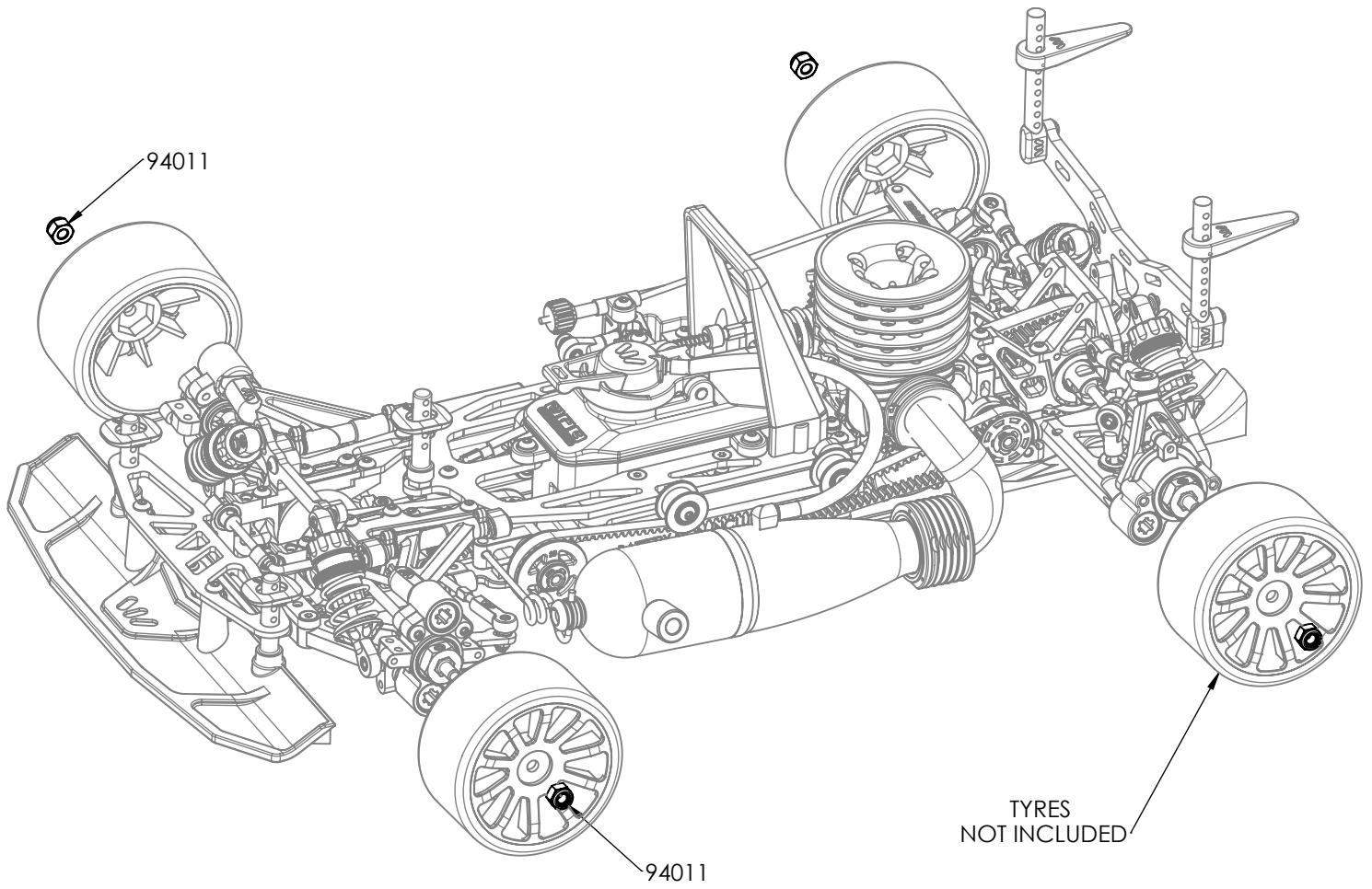






OPTIONALS





NTX

SETUP SHEET

NAME _____
 DATE _____
 TRACK _____

TRACK CONDITION

SURFACE	<input type="radio"/> SMOOTH	<input checked="" type="radio"/> MEDIUM	<input type="radio"/> BUMPY
SIZE	<input type="radio"/> TIGHT	<input checked="" type="radio"/> MEDIUM	<input type="radio"/> FAST
TRACTION	<input type="radio"/> LOW	<input checked="" type="radio"/> MEDIUM	<input type="radio"/> HIGH

TRANSMISSION

PINION	1st: 15	2nd: 20
SPUR GEAR	1st: 53	2nd: 48

DRIVE TRAIN

	FRONT	REAR
GEAR DIFF OIL (cst)	500000	80000
RIGID AXLE	/	/

CLUTCH SETTINGS

STANDARD

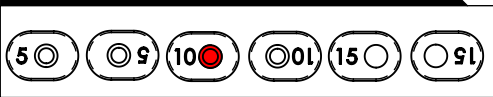
TYRES

	FRONT	SHORE
FRONT	Ø 60	37
REAR	Ø 62	40

SHOCKS SETTINGS

	FRONT	REAR
SPRINGS	BLACK	BLACK
OIL	800	800
PISTON HOLES	3	3

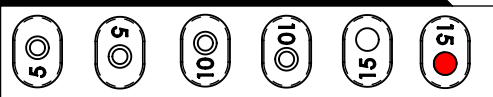
FRONT ARM BUSHES ORIENTATION



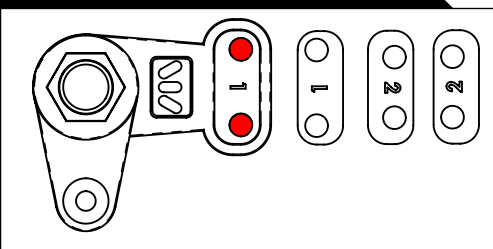
ANTI-ROLL BAR

FRONT	2.6
REAR	2.3

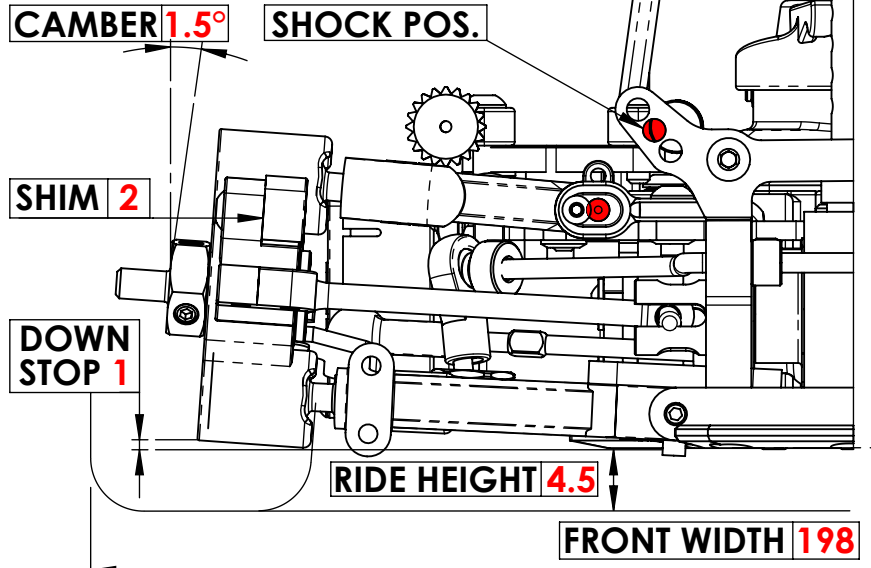
REAR ROLL CENTER



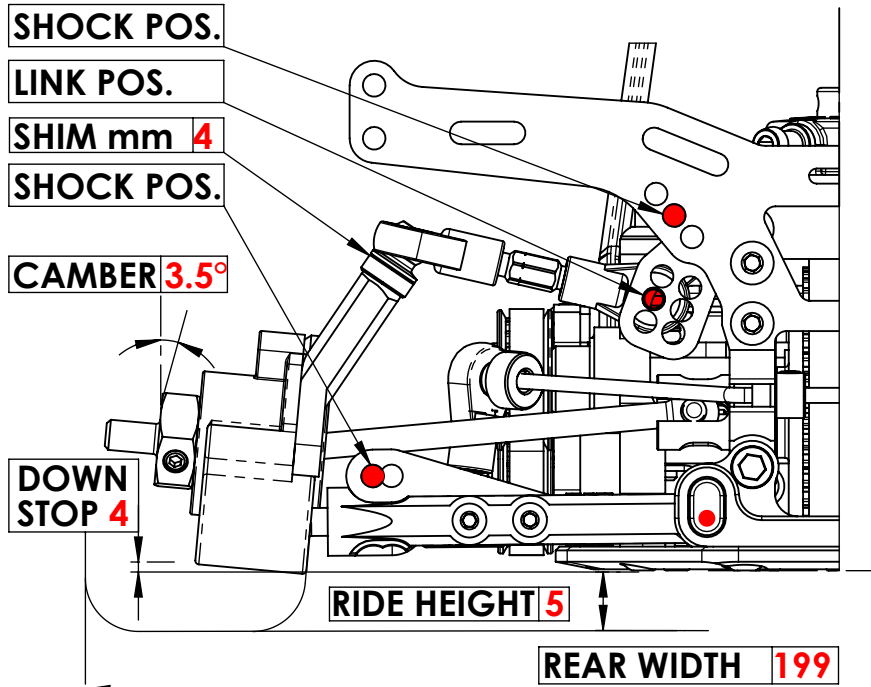
ACKERMAN



FRONT



REAR



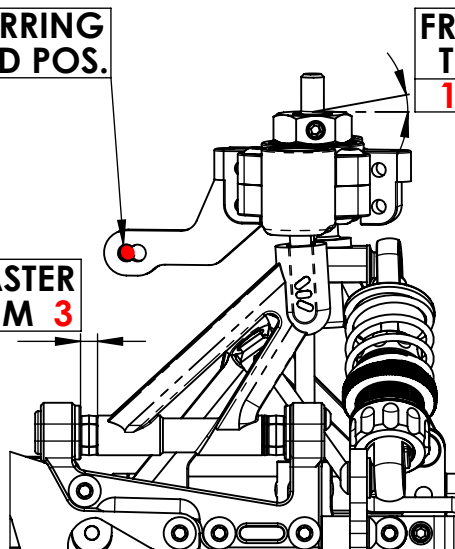
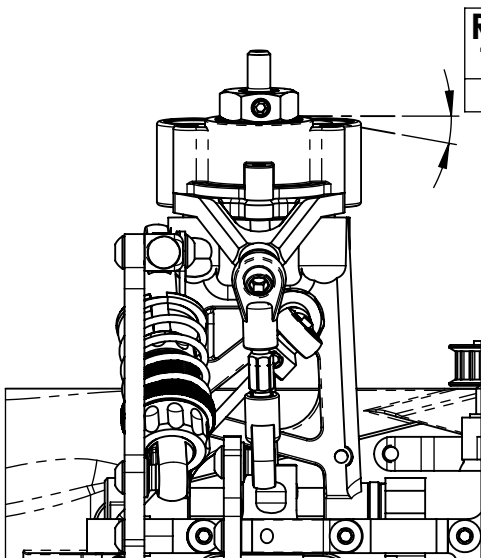
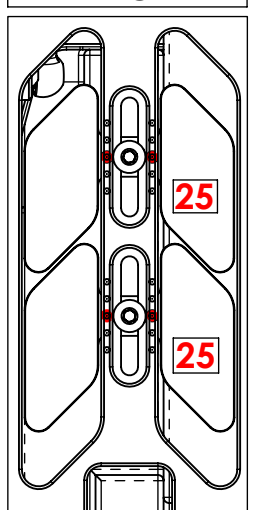
REAR TOE
1.5°

STERRING ROD POS.

FRONT TOE
1.5°

CASTER SHIM
3

WEIGHT



NAME _____
 DATE _____
 TRACK _____

TRACK CONDITION

SURFACE SMOOTH MEDIUM BUMPY
SIZE TIGHT MEDIUM FAST
TRACTION LOW MEDIUM HIGH

TRANSMISSION

PINION 1st: _____ 2nd: _____
SPUR GEAR 1st: _____ 2nd: _____

DRIVE TRAIN

	FRONT	REAR
GEAR DIFF OIL (cst)		
RIGID AXLE		

CLUTCH SETTINGS

STANDARD _____

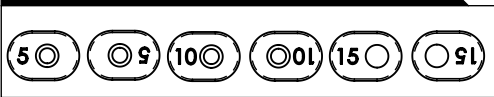
TYRES

	SHORE
FRONT	
REAR	

SHOCKS SETTINGS

	FRONT	REAR
SPRINGS		
OIL		
PISTON HOLES		

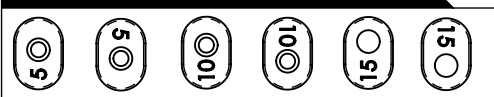
FRONT ARM BUSHES ORIENTATION



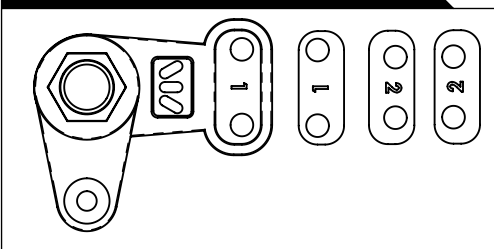
ANTI-ROLL BAR

FRONT	
REAR	

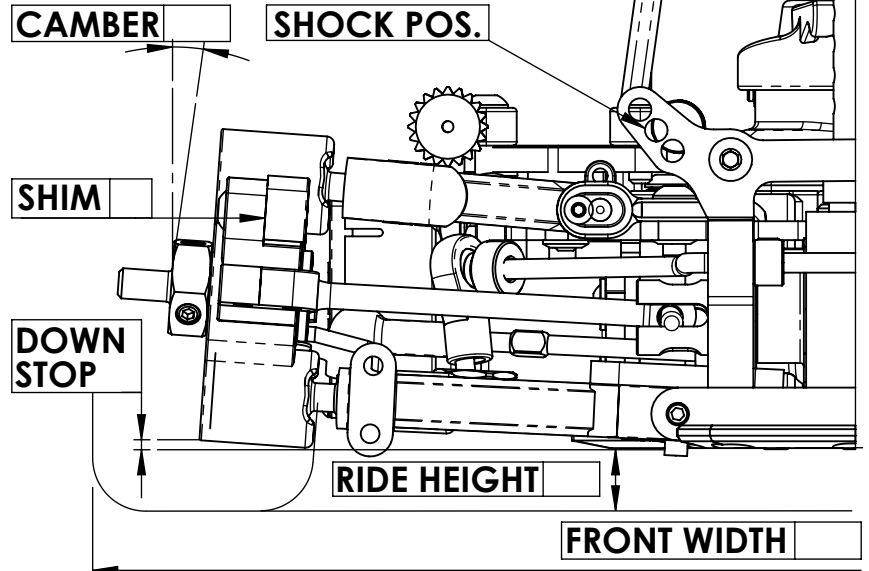
REAR ROLL CENTER



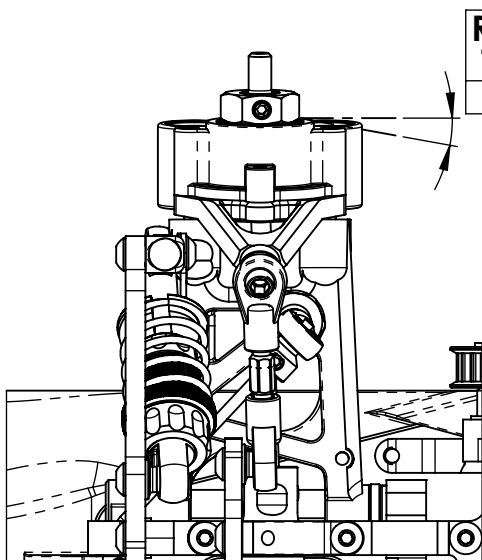
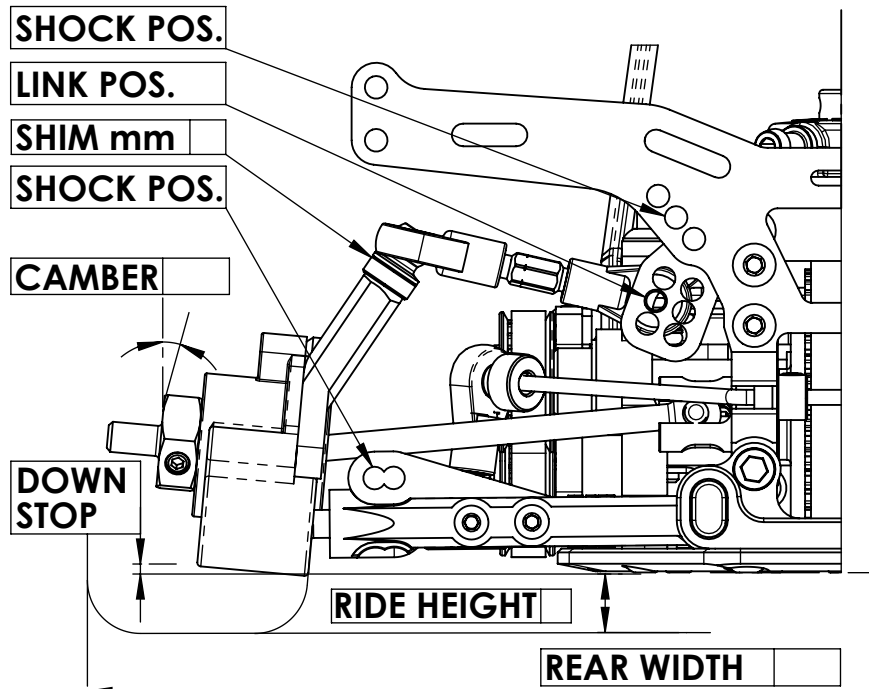
ACKERMAN



FRONT



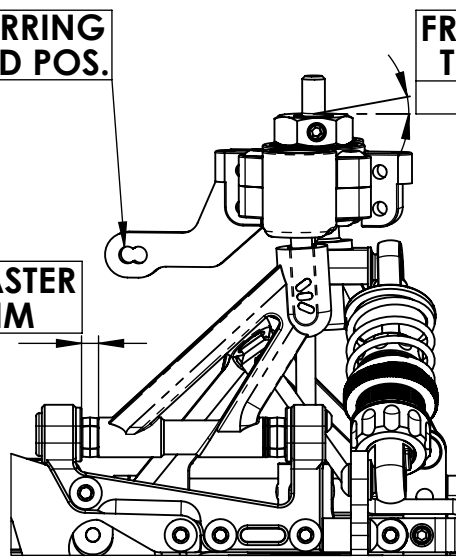
REAR



REAR TOE

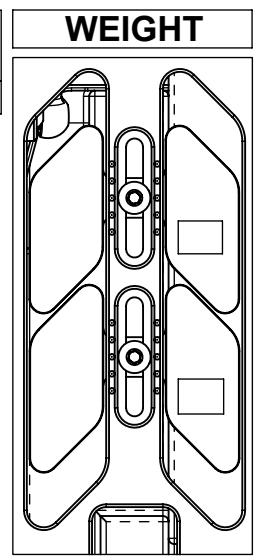
STERRING ROD POS.

CASTER SHIM



FRONT TOE

WEIGHT



WIRC
PROFESSIONAL RC CAR

W.R.C. world racing car s.r.l.

www.wrc-racing.com