

GT X·E

NEW GENERATION RC CAR

ONROAD GP 1/8
NITRO 4WD



INSTRUCTION MANUAL

WIRC
PROFESSIONAL RC CAR

WWW.WIRCACING.COM



INTRODUCTION

GT X is a new generation high quality 1/8 scale nitro on-road car.
GT X is supplied in a box, you can download the Instruction manual from www.wircracing.com
Its use is intended for more than 16 years old persons with experience on rc model car field.
Children and all the persons without this requirement MUST have direct supervision of a knowledgeable adult responsible.

SAFETY PRECAUTIONS

Instruction Manual MUST be read and fully understood before to start building and operating functions.
Always keep Instruction Manual in safety place, ready to be consulted for any reference you need.
Use only original WIRC spare parts.

GENERAL INFORMATION

Assemble the kit only away from the reach of children.
Follow the building and operating instructions using the utmost care.
Don't put any part of your body inside rotating and moving elements as this may cause damage or serious injury.
Check and clean the model before putting it away.
Don't use your model car in public places or in roads and areas where it could generate conflict with person or vehicular traffic.
The model car is controlled by radio: you MUST put great care to avoid loss of radio control always keeping a safety margin all around your model in order to prevent any collision.
Operating frequency: check and be sure it is clear and not shared with anybody at same time; it could cause loss of control of the RC model.
Always turn on your transmitter before you turn on the receiver in the car and always turn off the receiver before you turn off your transmitter.
Keep the wheels of the model off the ground when checking the operation of the radio equipment.
Disconnect the battery pack before storing your model.

WARRANTY

WIRC guarantees this model kit to be free from defects in both material and workmanship within 30 days of purchase.
The total monetary value under warranty will in no case exceed the cost of the original kit purchased.
This warranty doesn't cover any components damaged by use or modification or as result of wear.
Part or parts missing from this kit must be reported within 30 days of purchase.
No part or parts will be sent under warranty without proof of purchase.
If you find a defective or missing part, contact the local distributor.
Customer service and support will be provided through local hobby store.
No warranties are expressed or implied that cover damage caused by what is considered normal use or cover or imply how long any model cars' components or electric components will last before requiring replacement.
Due to the high performance level of this model car you will need to periodically maintain and replace consumable components; any and all warranty coverage will not cover replacement of any part or component damaged by neglect, abuse or improper or unreasonable use.
This includes but is not limited to damage from crashing, excessive moisture, improper use or no maintenance or user modifications which compromise the integrity of components.
Warranty will not cover components that are considered consumable on RC model car.
WIRC doesn't pay nor refund on any component sent from WIRC or its distributor for warranty.
WIRC reserves the right to make final determination of the warranty status of any component or part
Use only original WIRC spare part:

CUSTOMER SUPPORT

Please don't hesitate to contact WIRC support at info@wircracing.com for any problem or question.
Also kindly visit our website www.wircracing.com to find last updates, set-up information, option parts and other information.

World racing car s.r.l.

Via A.Volta 2 Bis
36040 Brendola (VI)
ITALY

Phone: 0039 0444 1792263
E-mail: info@wircracing.com
Website: www.wircracing.com



TECHNICAL INFORMATION

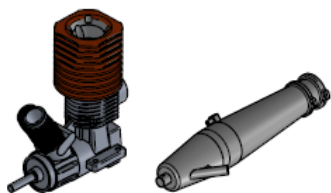
- BODY: PROTOTYPE MODEL (NOT INCLUDED)
- ADJUSTABLE FRONT TOE, CAMBER AND CASTER
- ADJUSTABLE REAR TOE AND CAMBER
- BUMPER /FRONT BACKSTOP
- ALUMINIUM CHASSIS
- FULL BALL BEARING
- CARBON RADIO PLATE
- TRANSMISSION: TRIPLE BELT 4WD
- FRONT DIFFERENTIAL: ONE-WAY
- REAR DIFFERENTIAL: SOLID AXLE
- FRONT AND REAR ADJUSTABLE ANTI-ROLL BARS
- PIVOT BALL SUSPENSIONS

TECHNICAL DATA

- LENGHT435 MM.
- WIDTH260 MM.
- WHEEL BASEadjustable 294-298 MM.
- WEIGHT CHASSIS.....2080 GR.

REQUIRED BUT NOT INCLUDED IN THE KIT

ADDITIONAL ITEMS NEEDED FOR COMPLETION



ENGINE AND MUFFLER



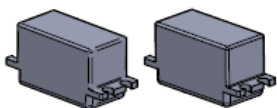
TRANSMITTER



RECEIVER



LEXAN BODY



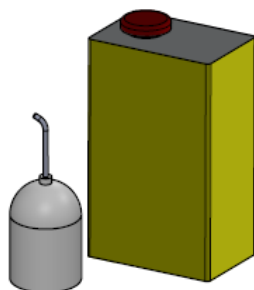
2 LOW PROFILE STEERING SERVO



AA ALKALINE BATTERIES FOR TRANSMITTER AND RECEIVER



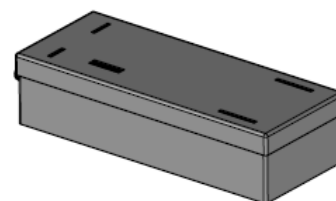
WHEEL - TYRES - INSERTS



FUEL AND FUEL PUMP



POCKET BOOSTER



STARTER

TOOLS REQUIRED

THESE TOOLS ARE NOT INCLUDED IN THE KIT BUT ARE REQUIRED FOR PROPER ASSEMBLY



ALLEN:
1.5 MM.
2.0 MM.
2.5 MM.
3.0 MM.



RING PLIERS



SIDE CUTTER

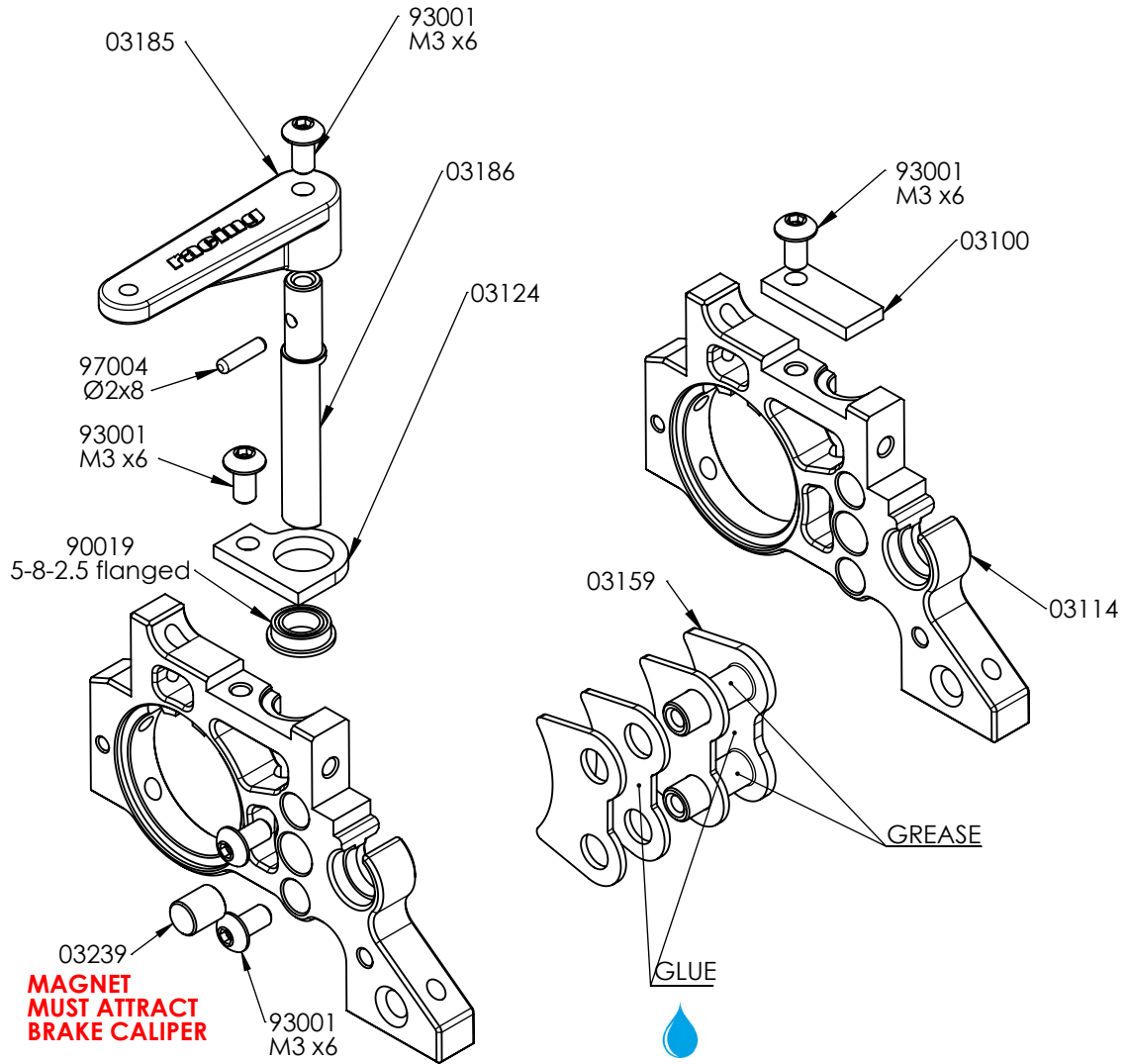


SCISSORS

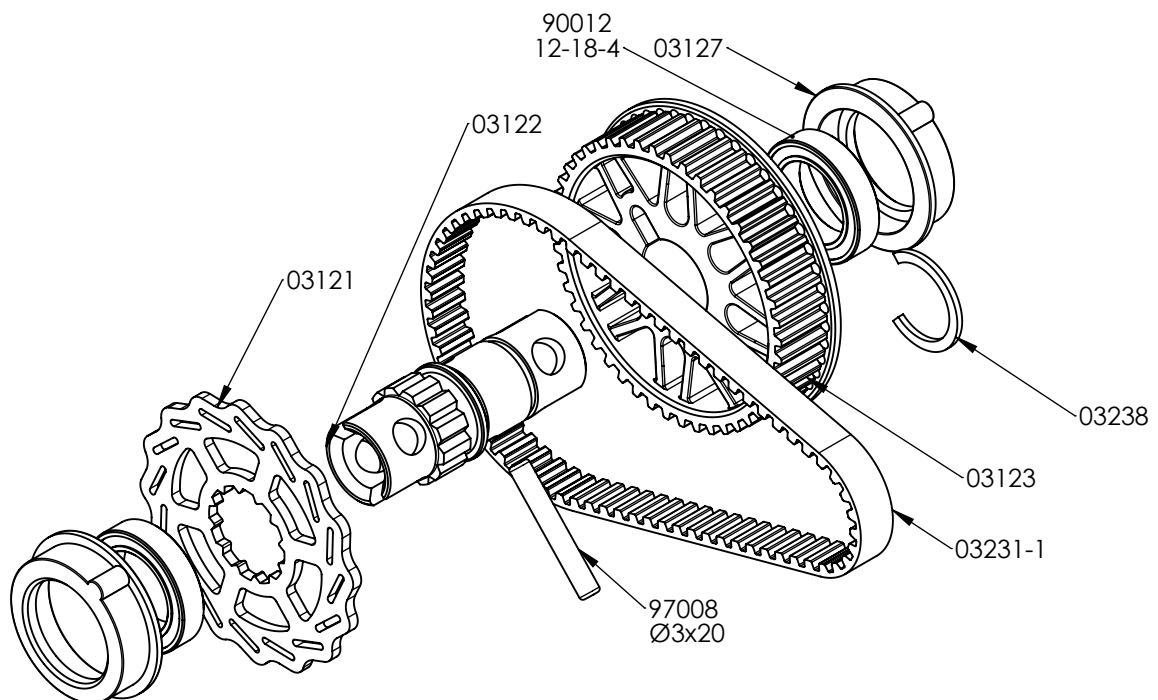
NOTICE:

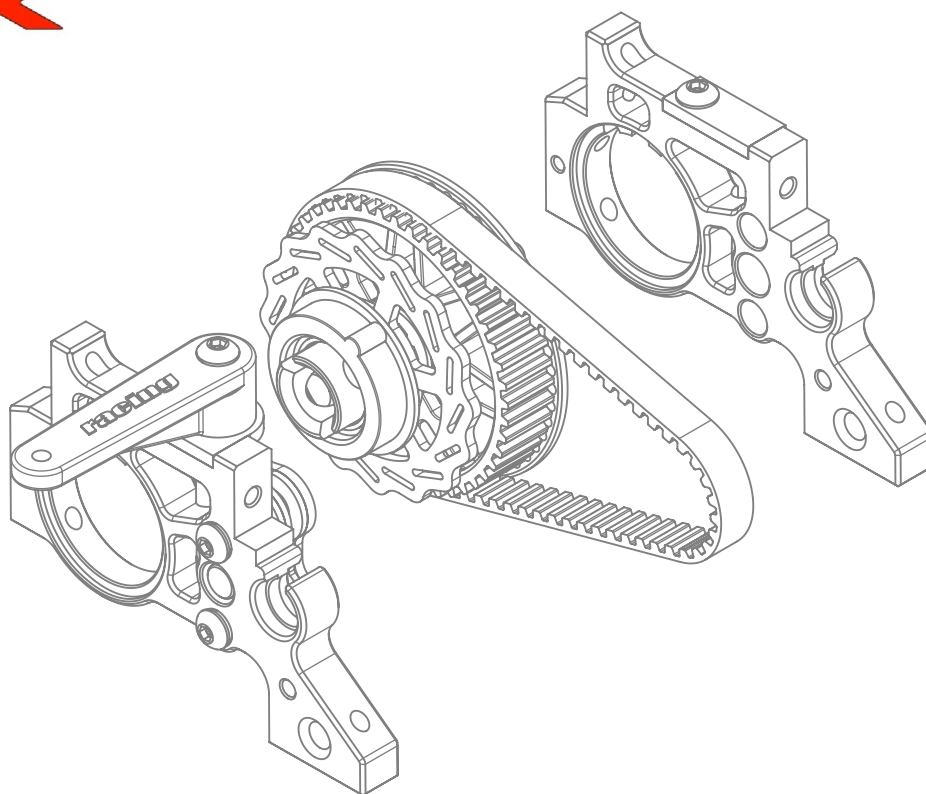
THE FOLLOWING ITEMS ARE NEEDED FOR COMPLETION OF THE GTX; THEY ARE NOT INCLUDED IN THIS KIT (UNLESS NOTED) AND SHOULD BE OBTAINED FROM YOUR LOCAL HOBBY SHOP.
BE SURE TO READ THE INSTRUCTION COMPLETELY PRIOR TO ASSEMBLY

BAG 1

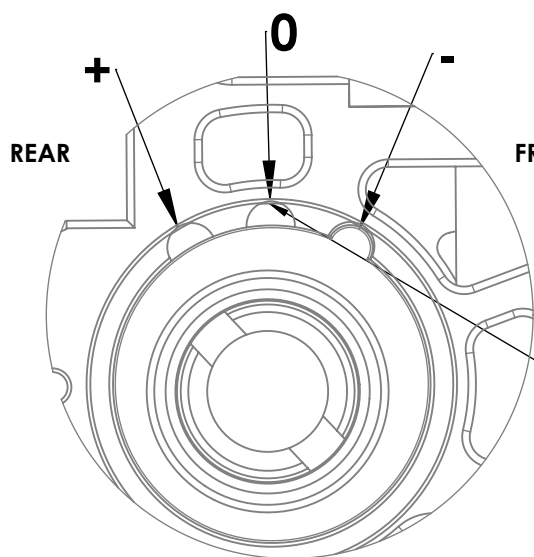


BAG 2

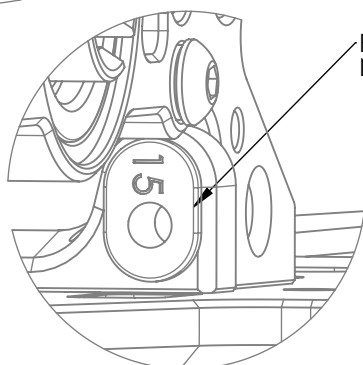




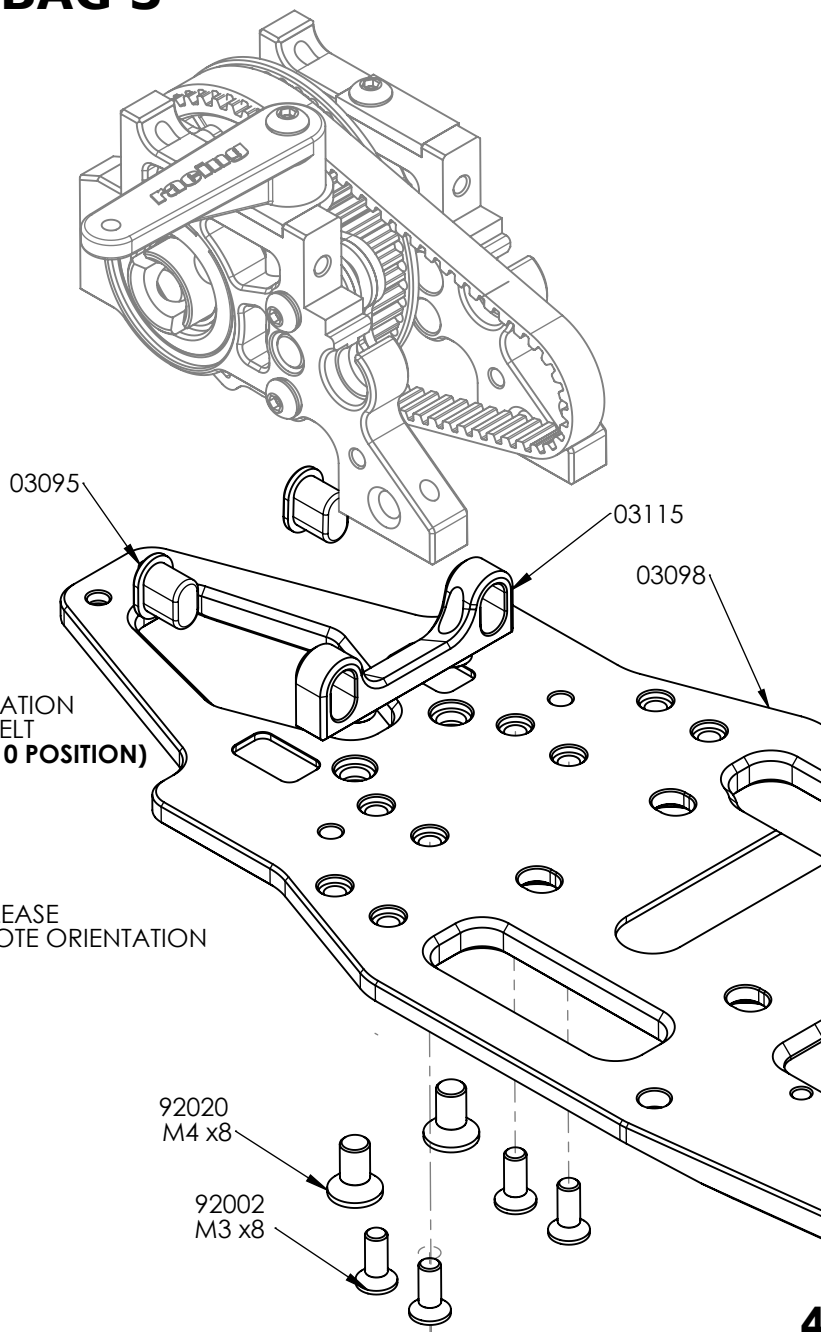
BAG 3



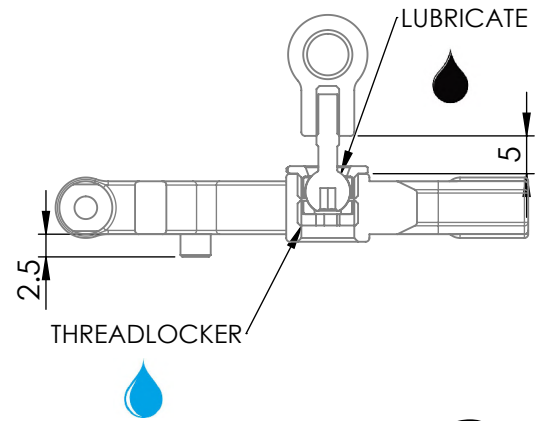
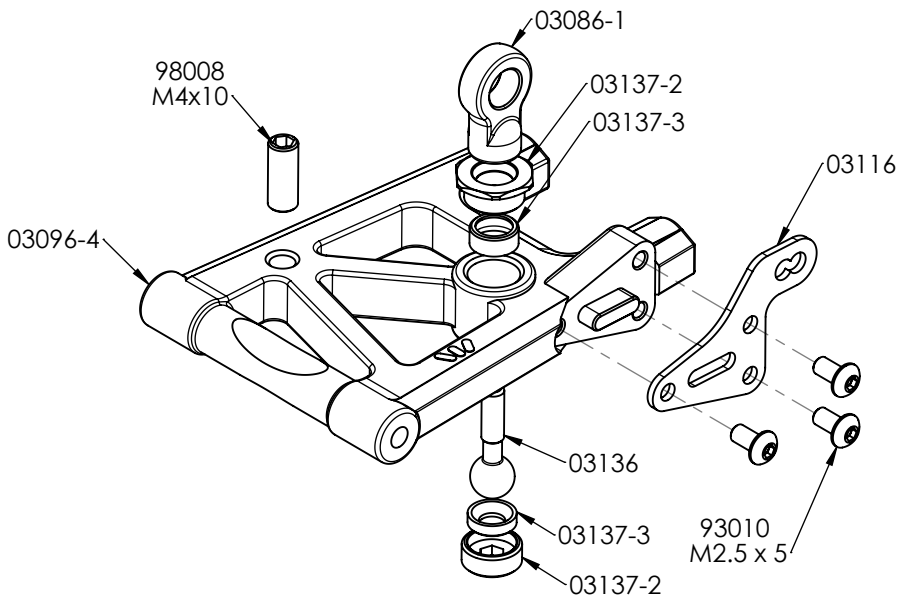
PLEASE
NOTE ORIENTATION
ADJUSTING BELT
TENSION (SET 0 POSITION)



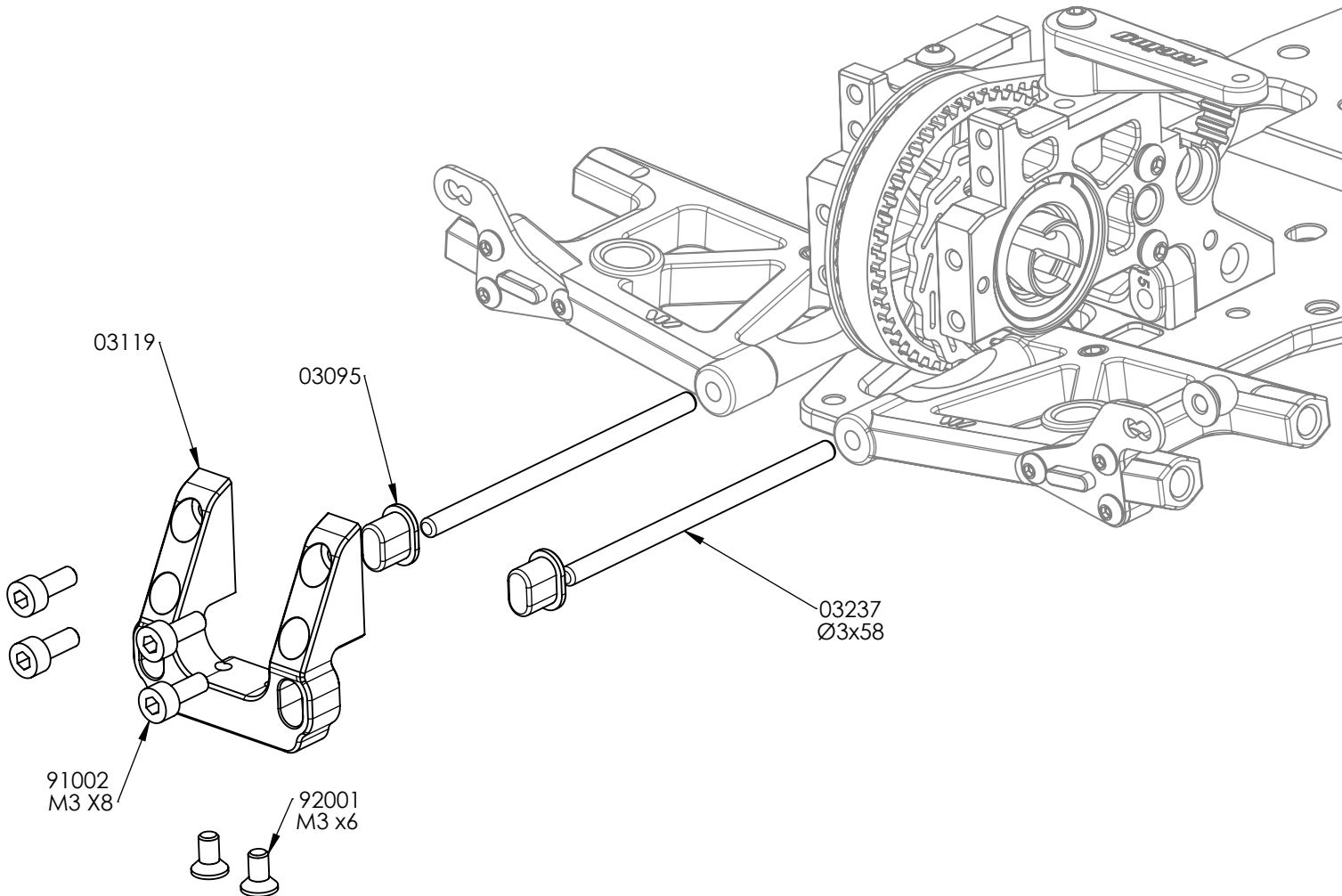
PLEASE
NOTE ORIENTATION



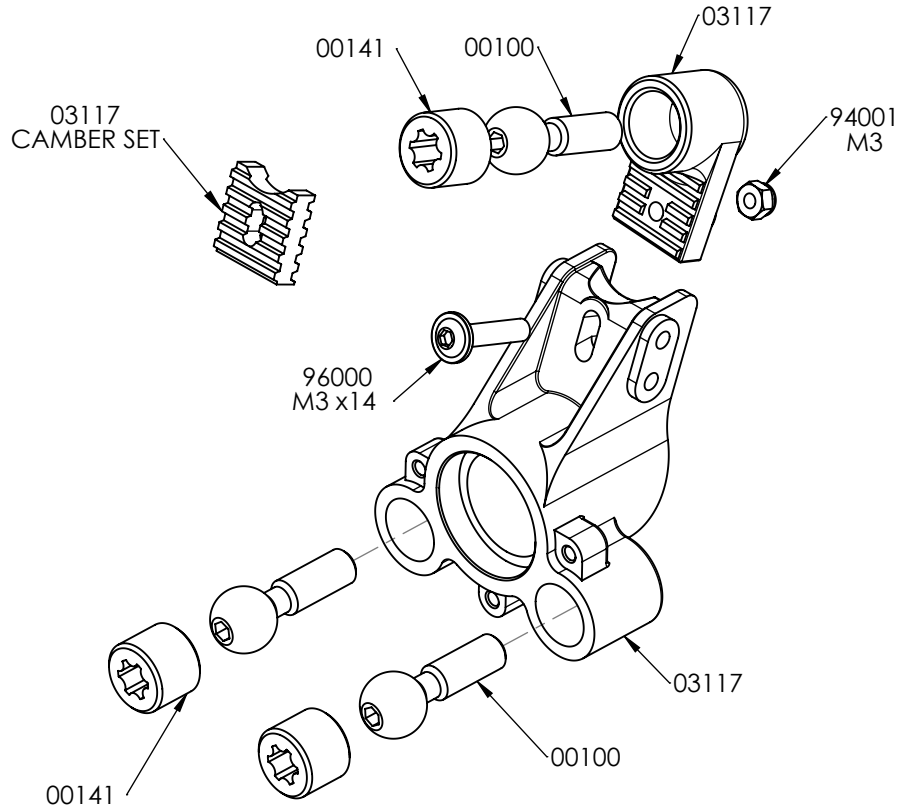
BAG 3



x2

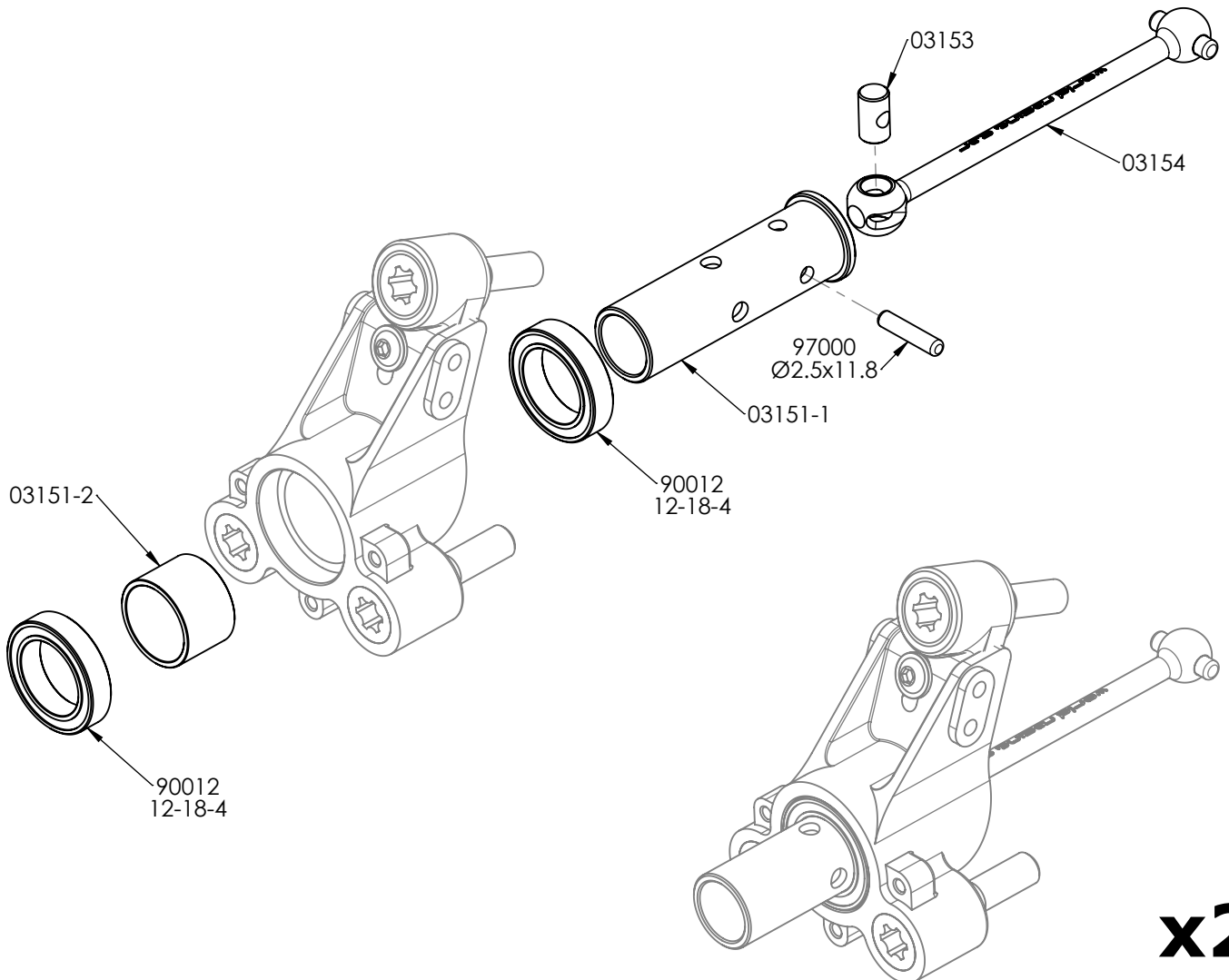


BAG 4



x2

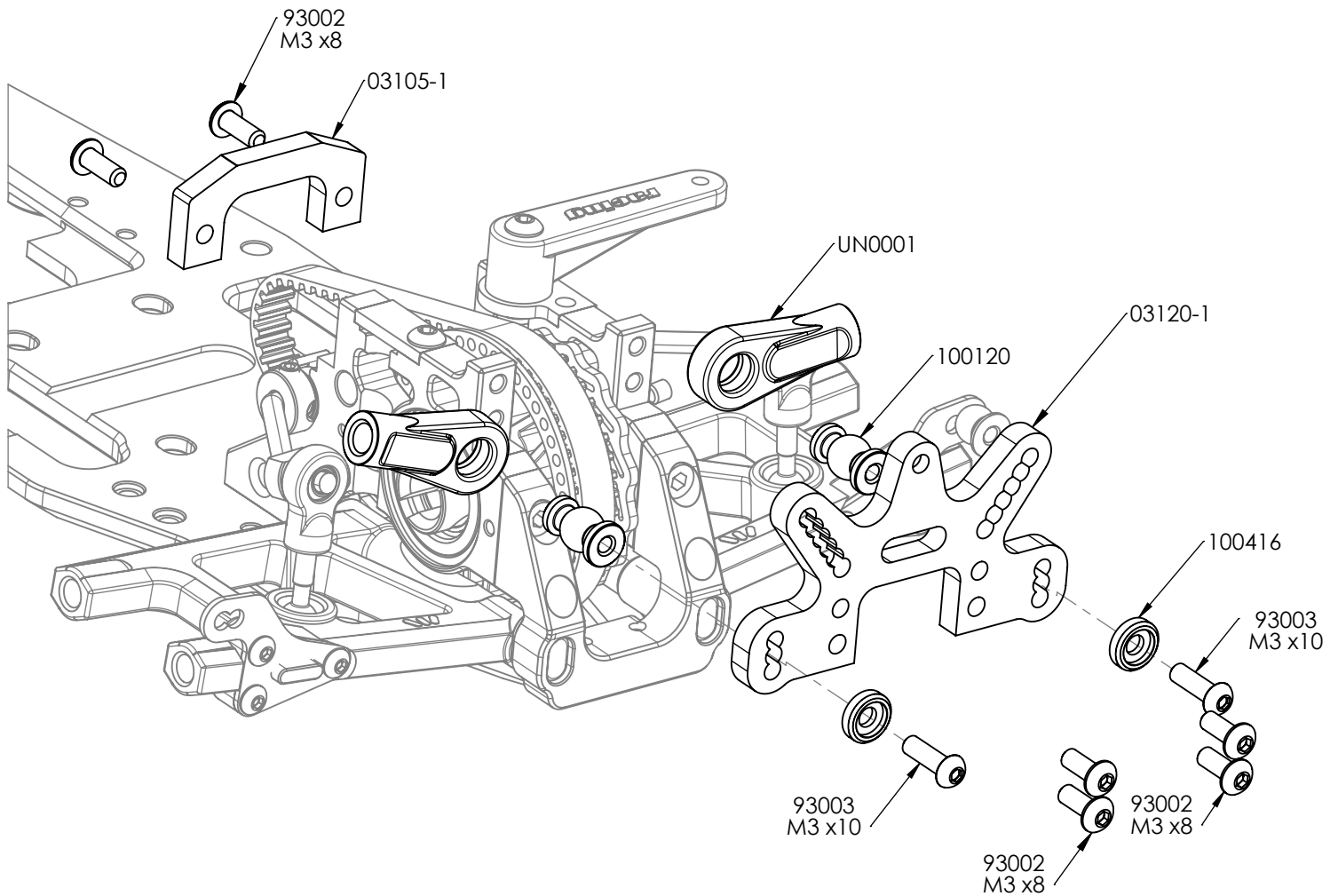
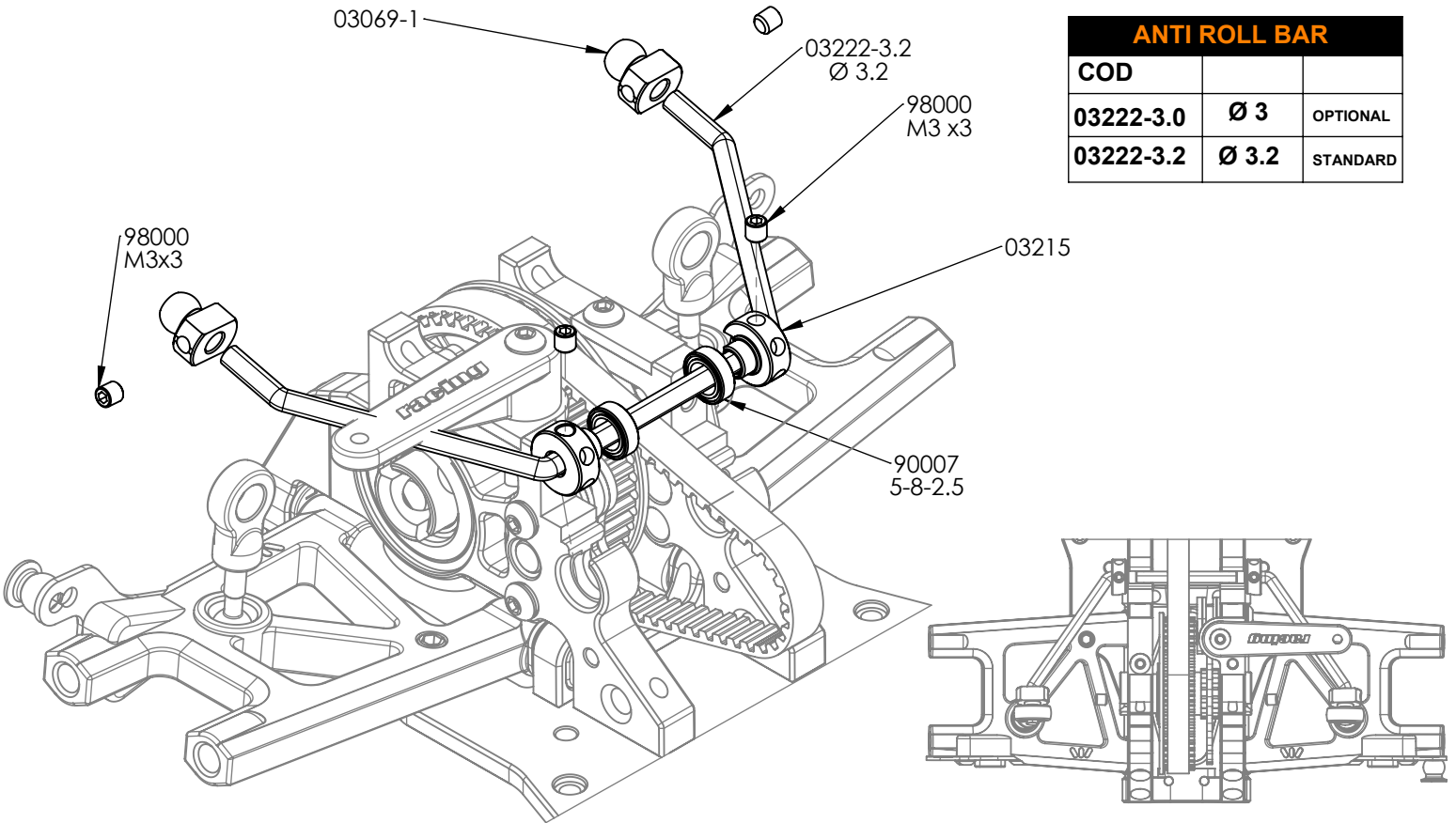
BAG 5

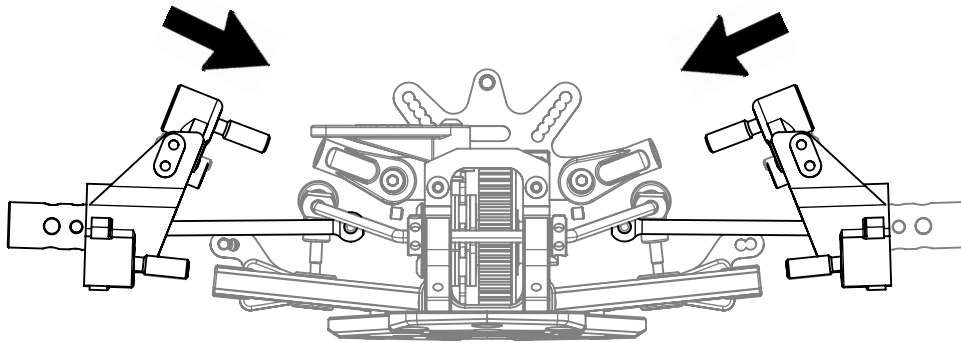


x2

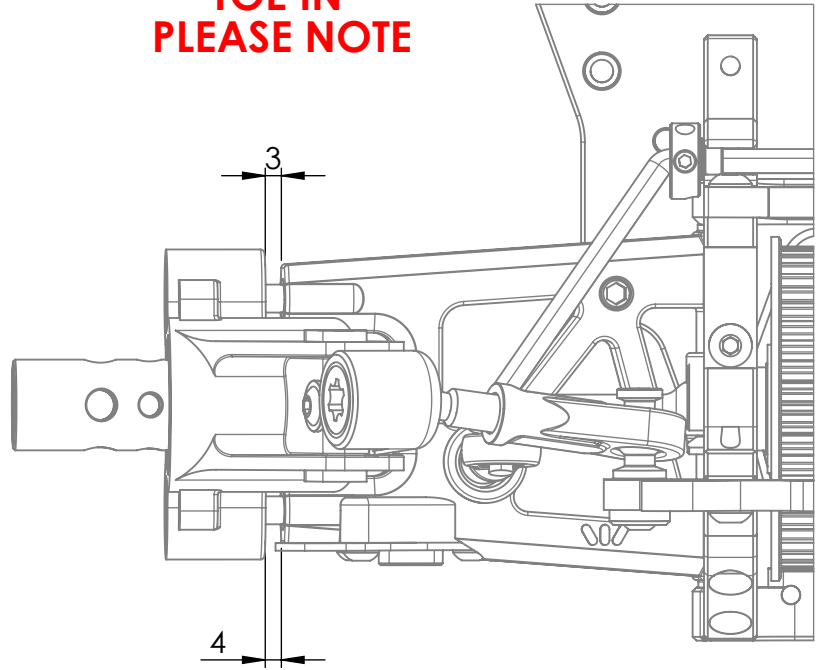
ANTI ROLL BAR

COD		
03222-3.0	Ø 3	OPTIONAL
03222-3.2	Ø 3.2	STANDARD

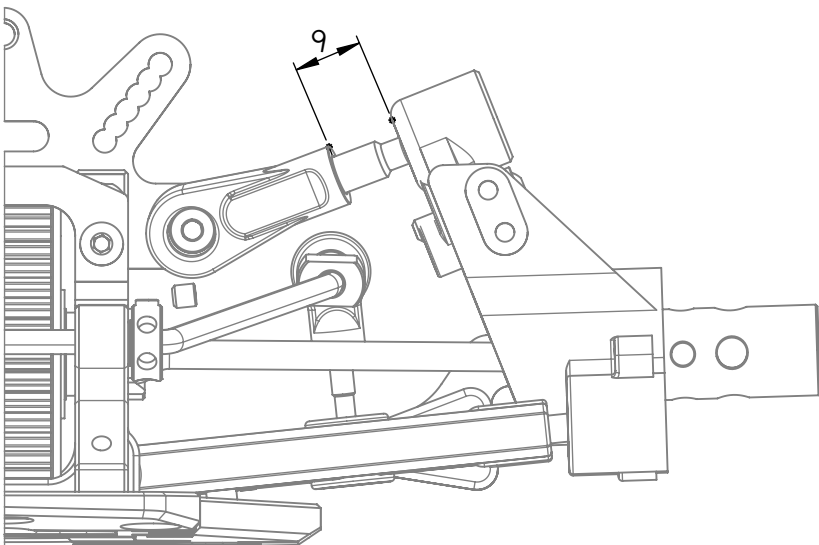


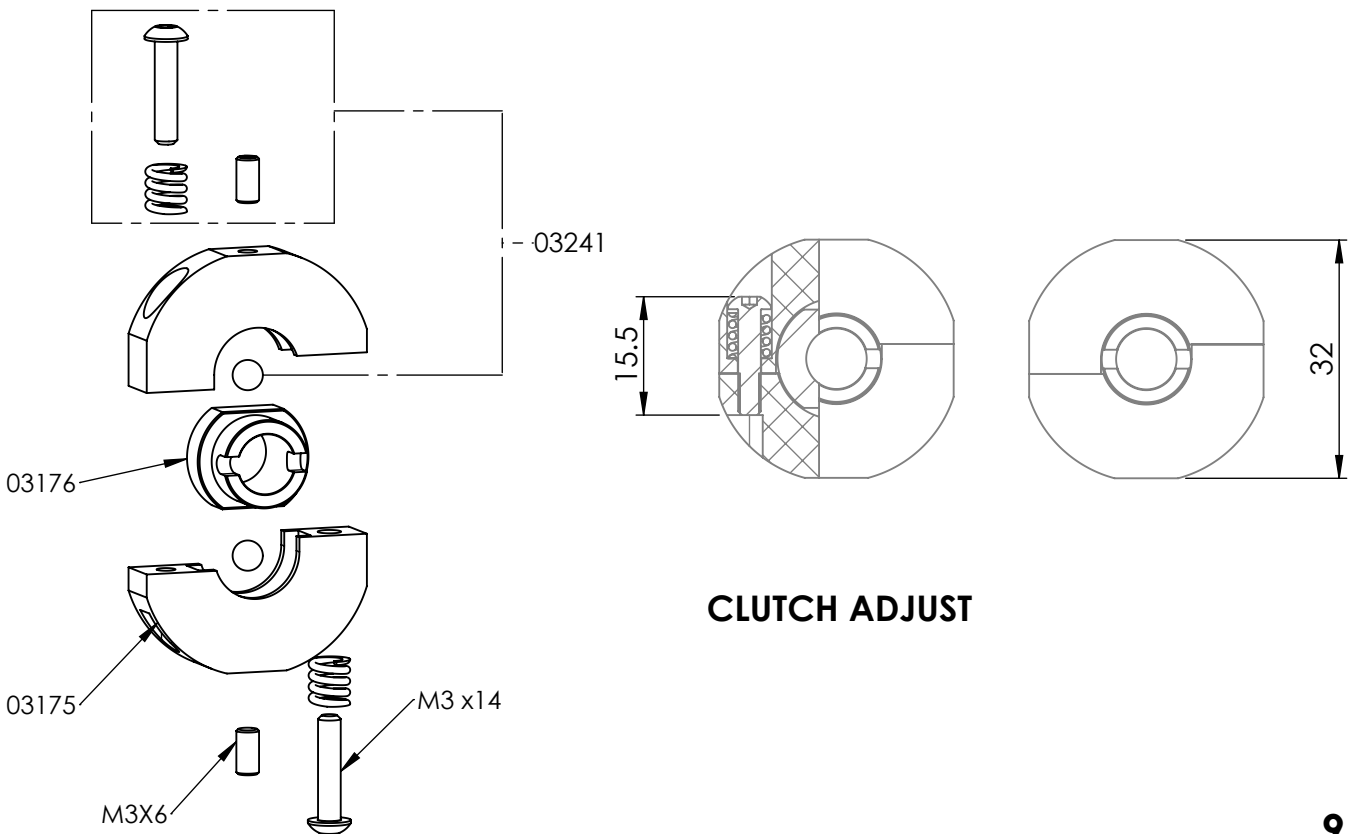
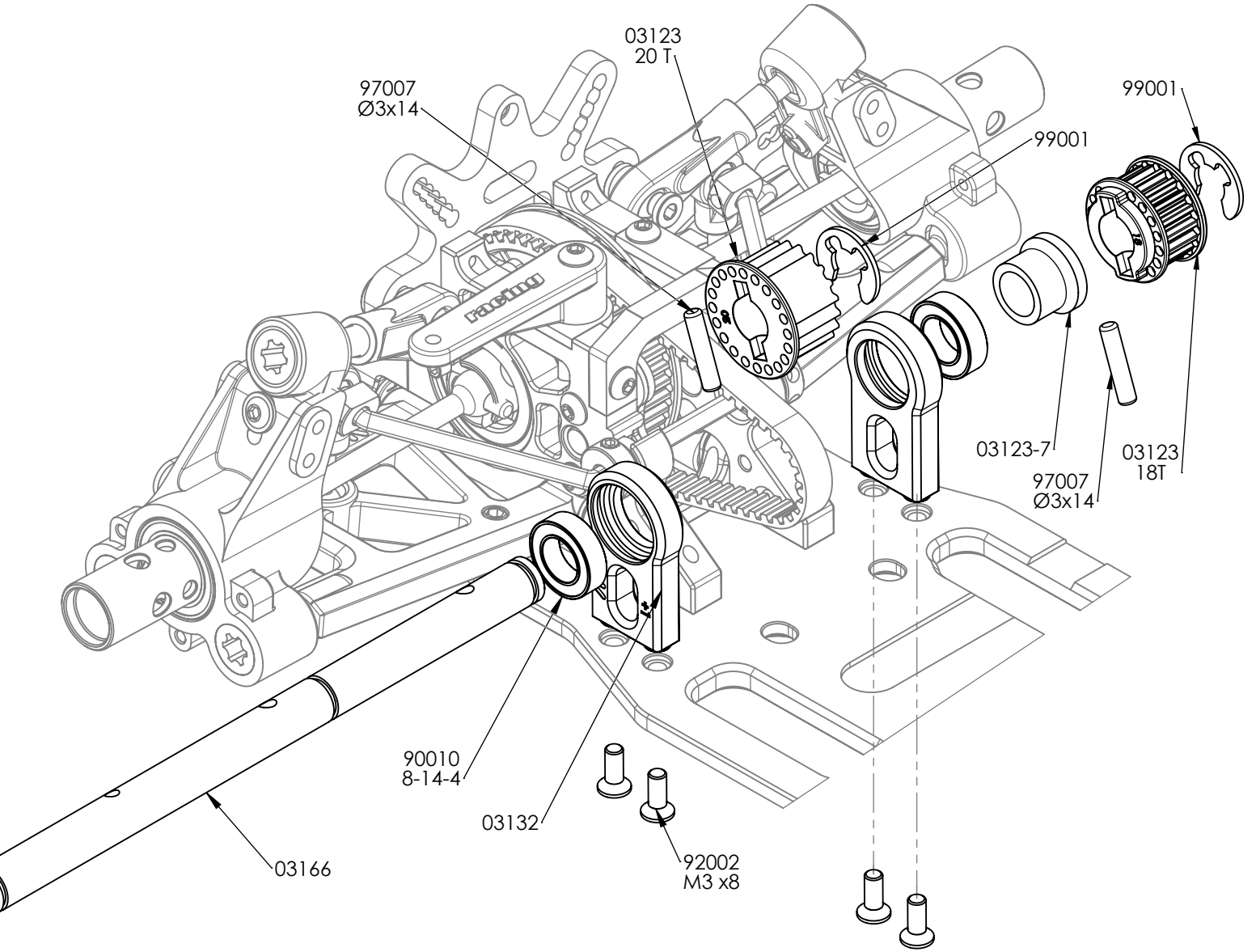


**TOE IN
PLEASE NOTE**

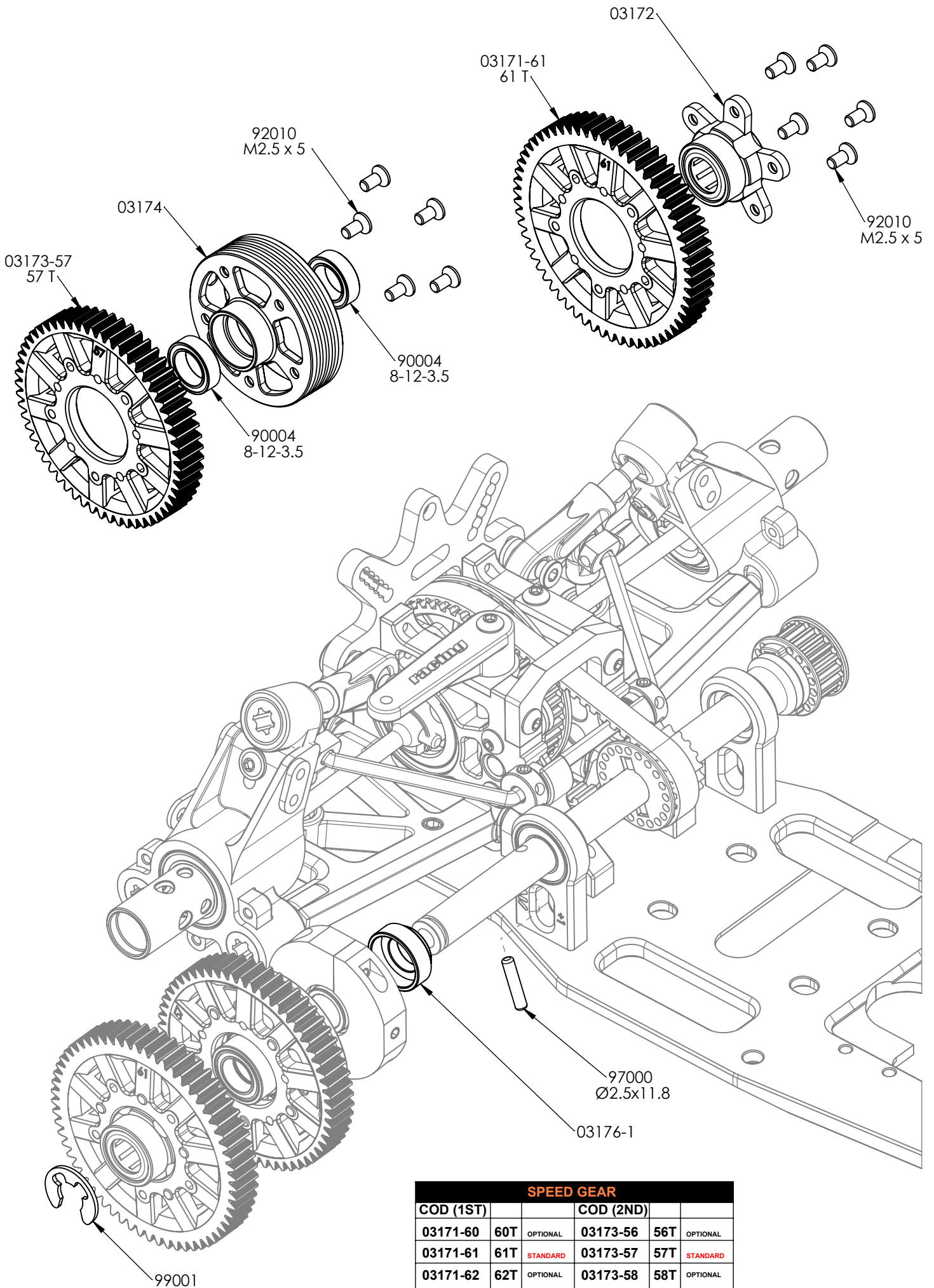


**SET
REAR CAMBER**



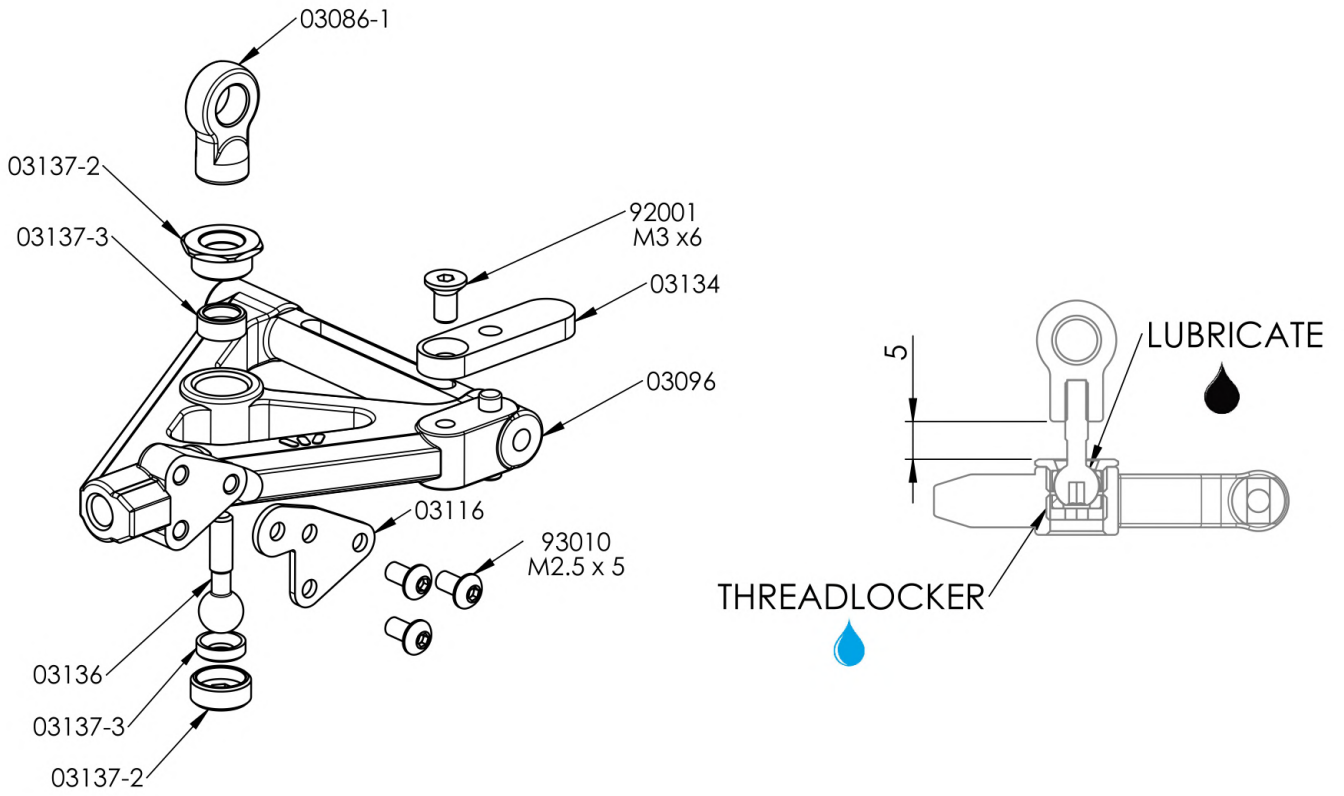


BAG 6

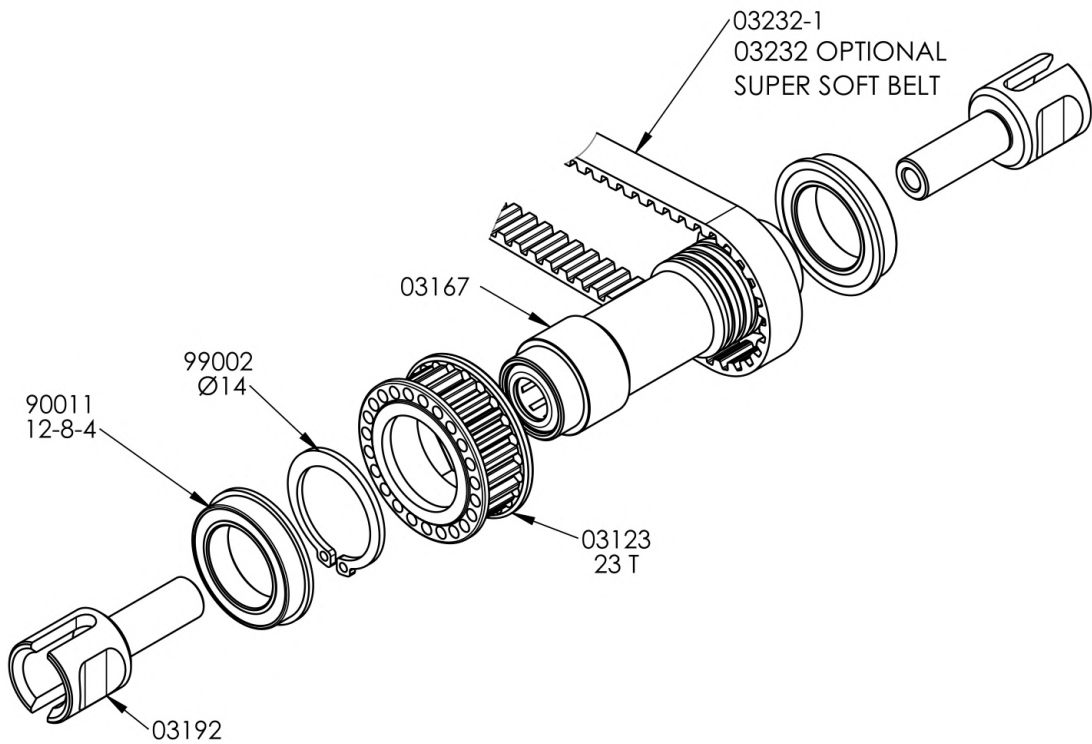


SPEED GEAR					
COD (1ST)			COD (2ND)		
03171-60	60T	OPTIONAL	03173-56	56T	OPTIONAL
03171-61	61T	STANDARD	03173-57	57T	STANDARD
03171-62	62T	OPTIONAL	03173-58	58T	OPTIONAL

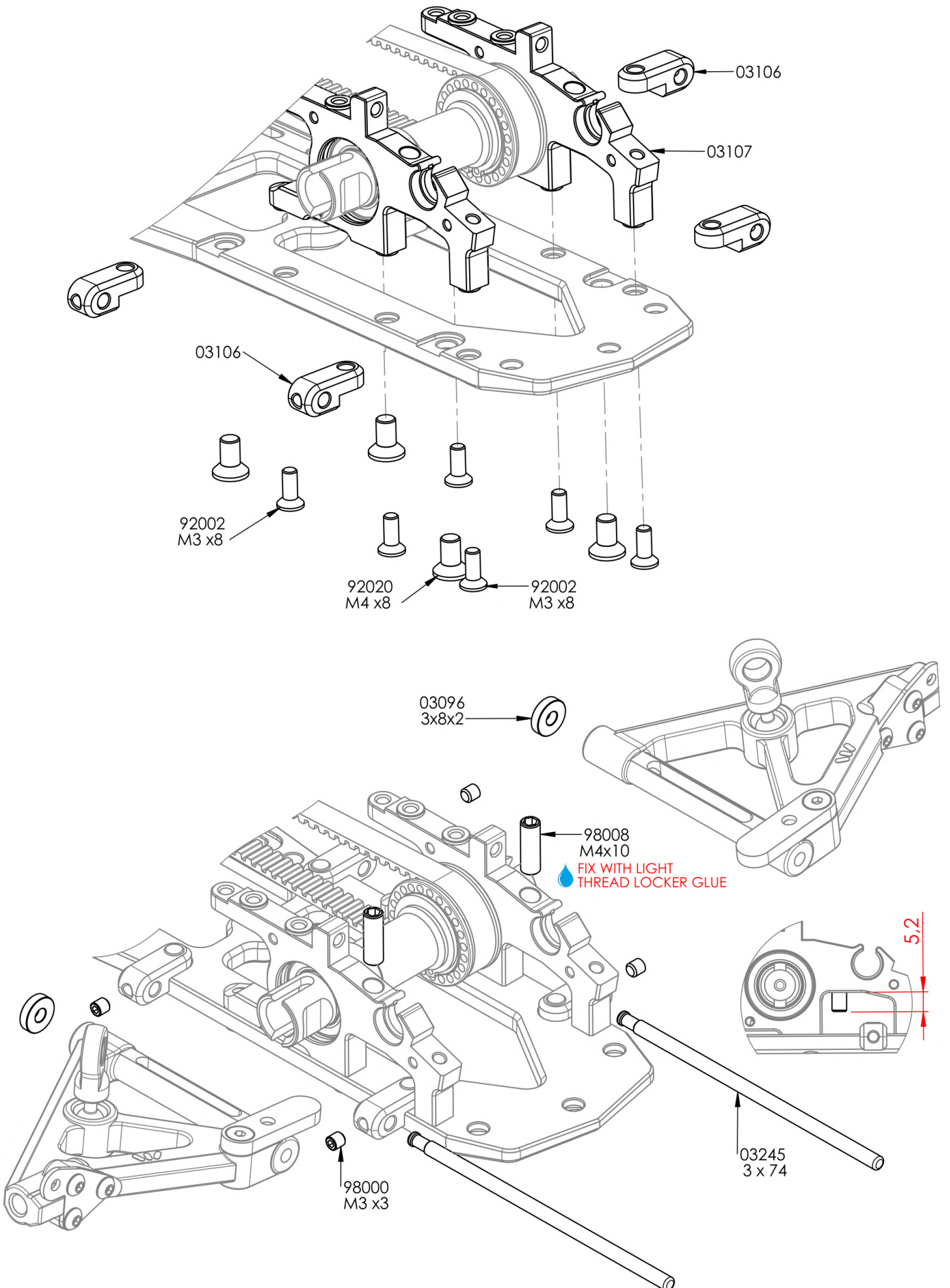
BAG 7



x2

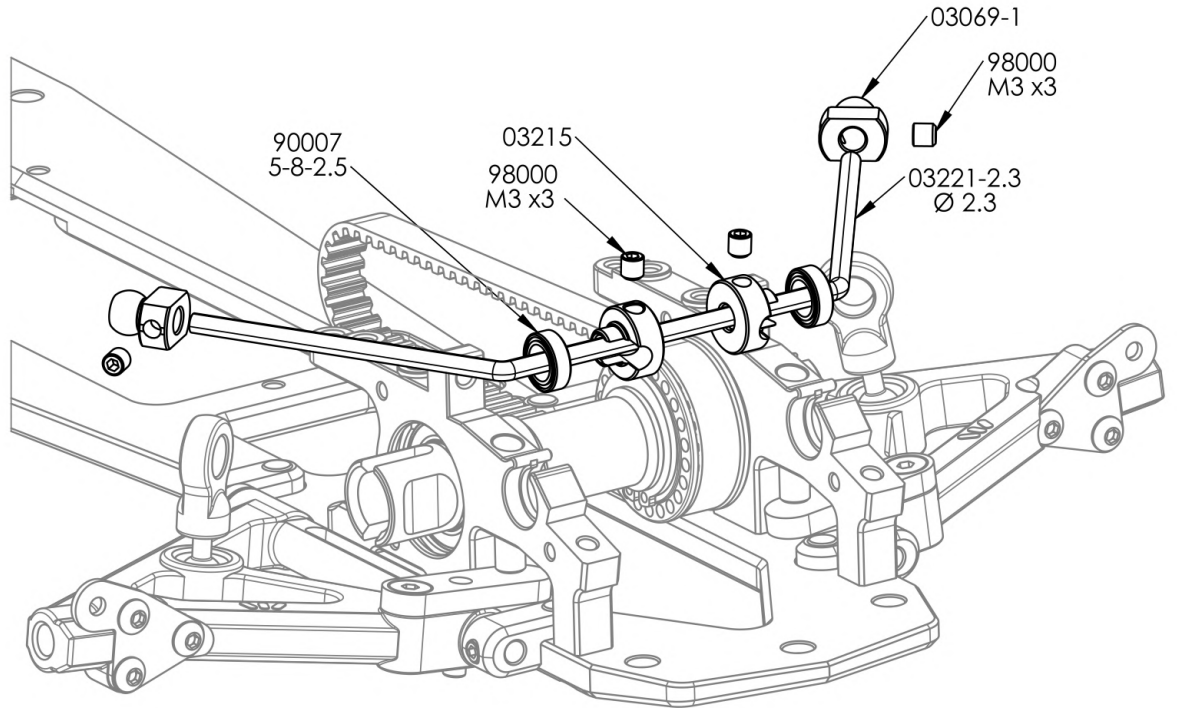


BAG 7

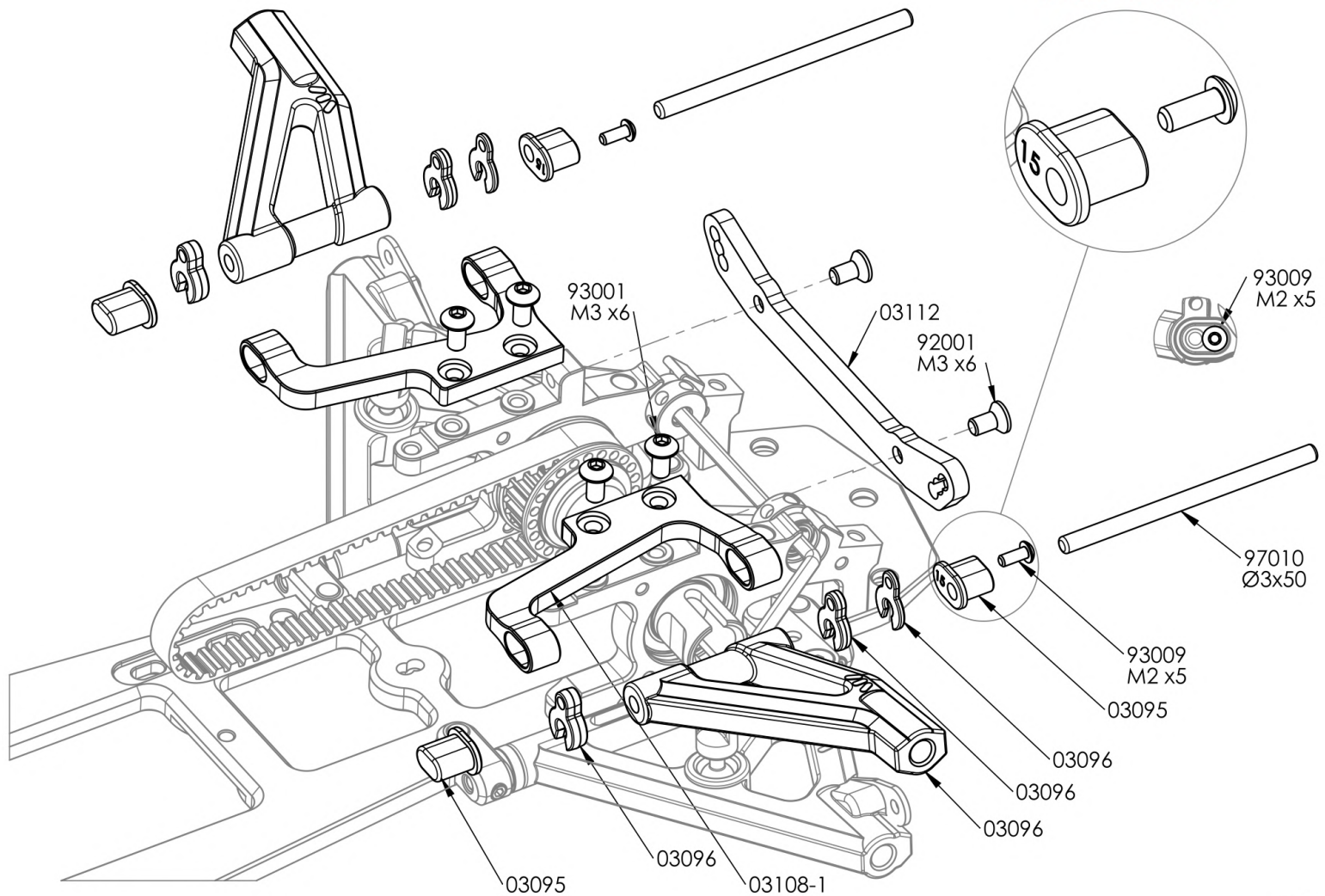


BAG 8

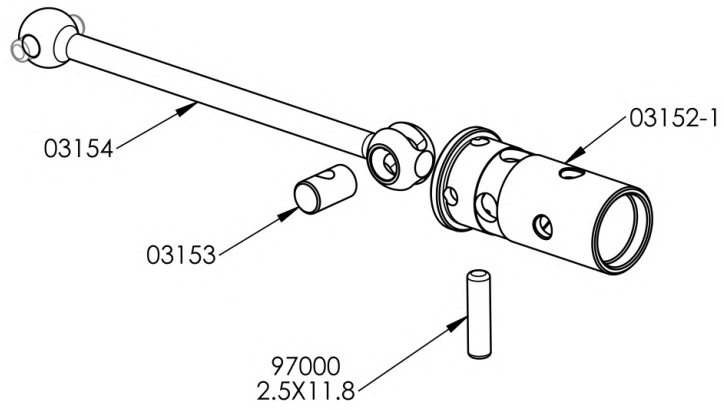
ANTI ROLL BAR		
COD		
03221-2.2	Ø 2.2	OPTIONAL
03221-2.3	Ø 2.3	STANDARD
03221-2.4	Ø 2.4	OPTIONAL



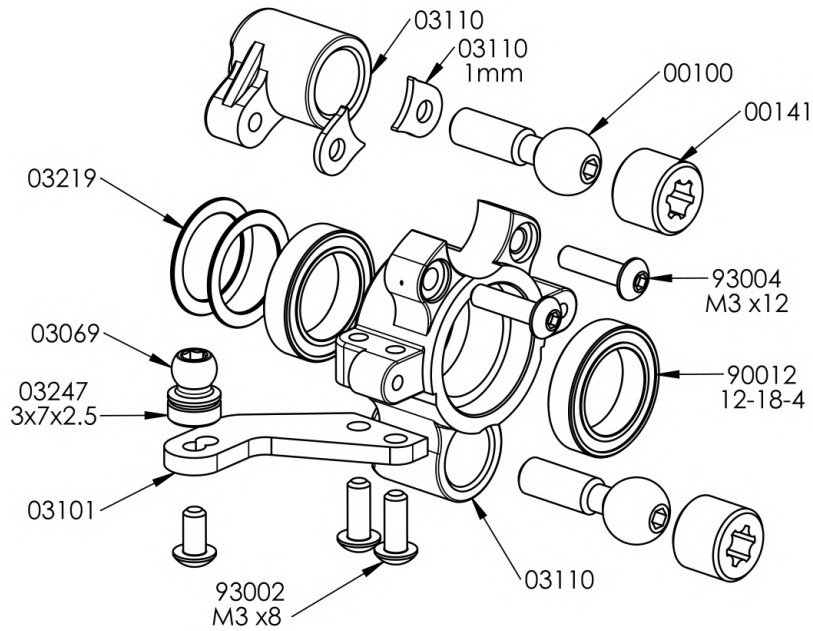
PLEASE NOTE ORIENTATION



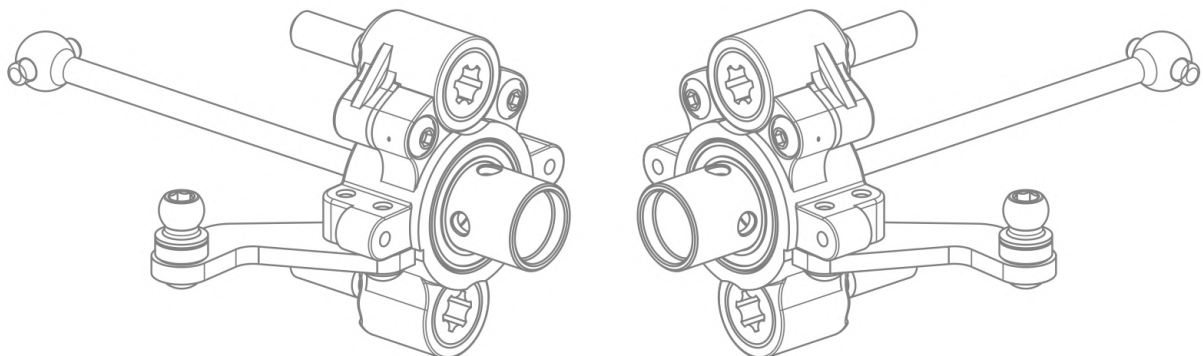
BAG 9



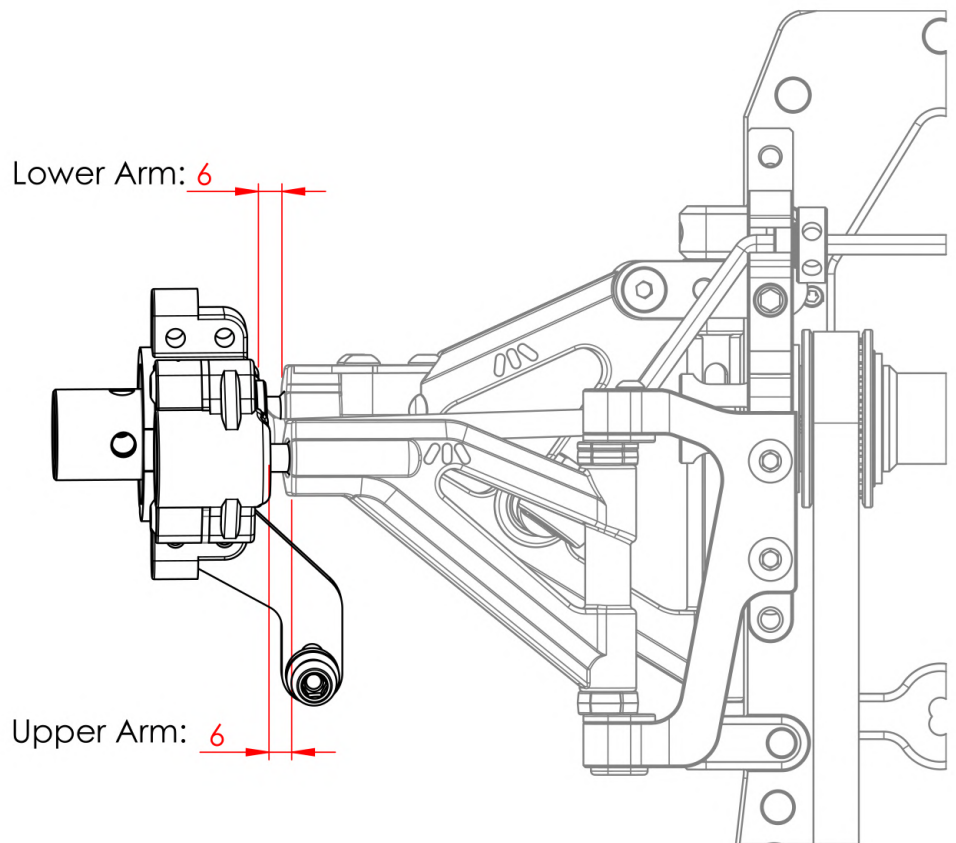
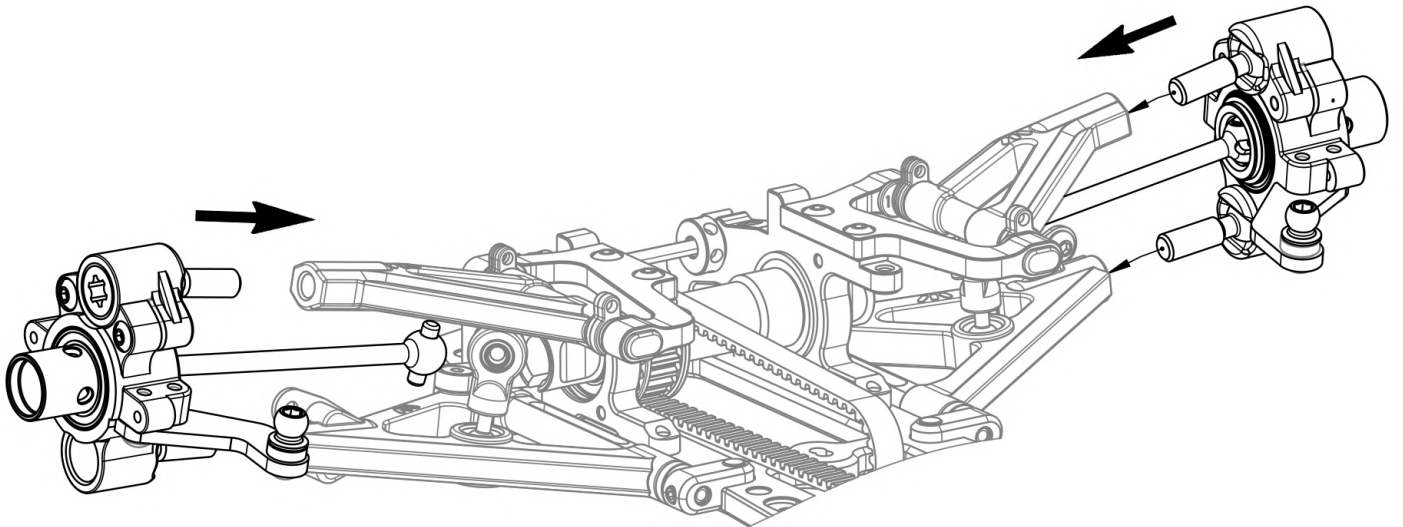
x2



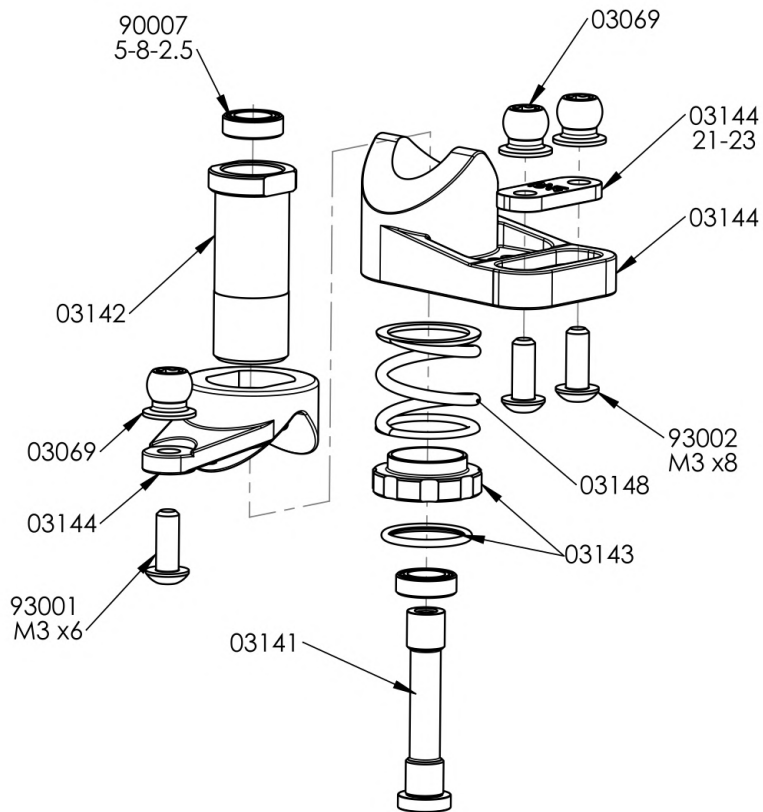
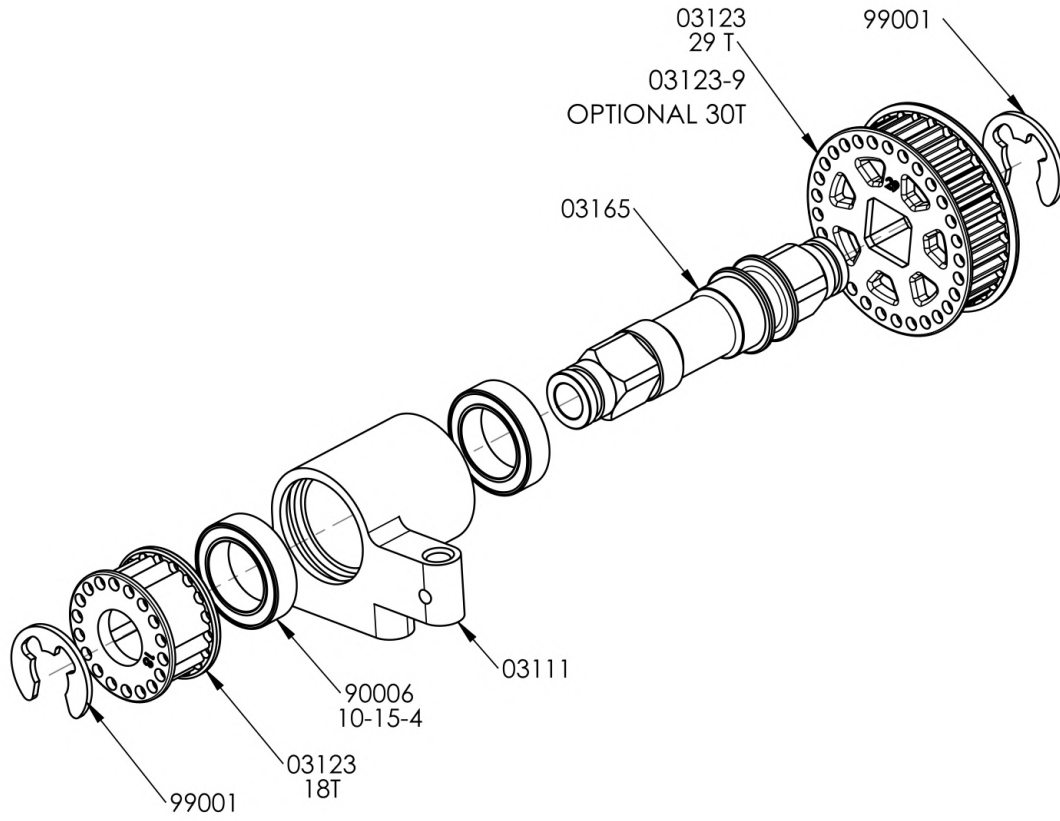
x2



1x Right and 1x Left

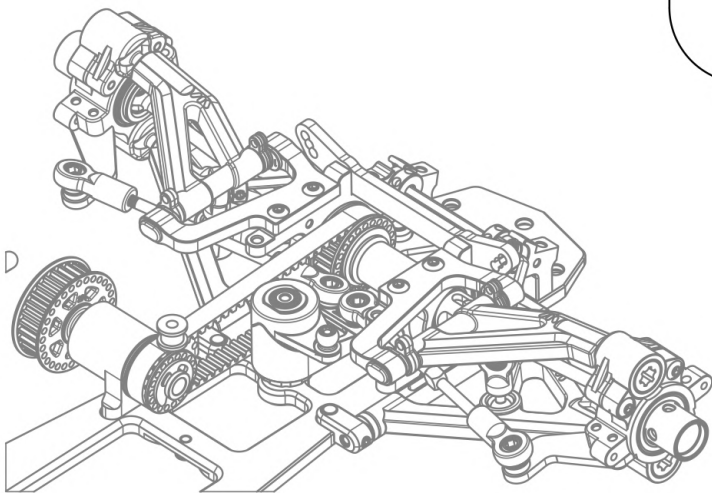
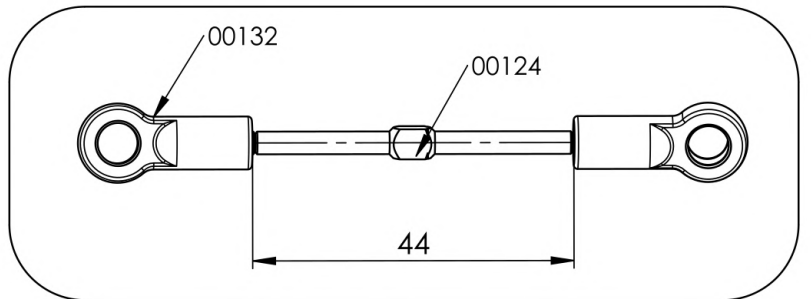
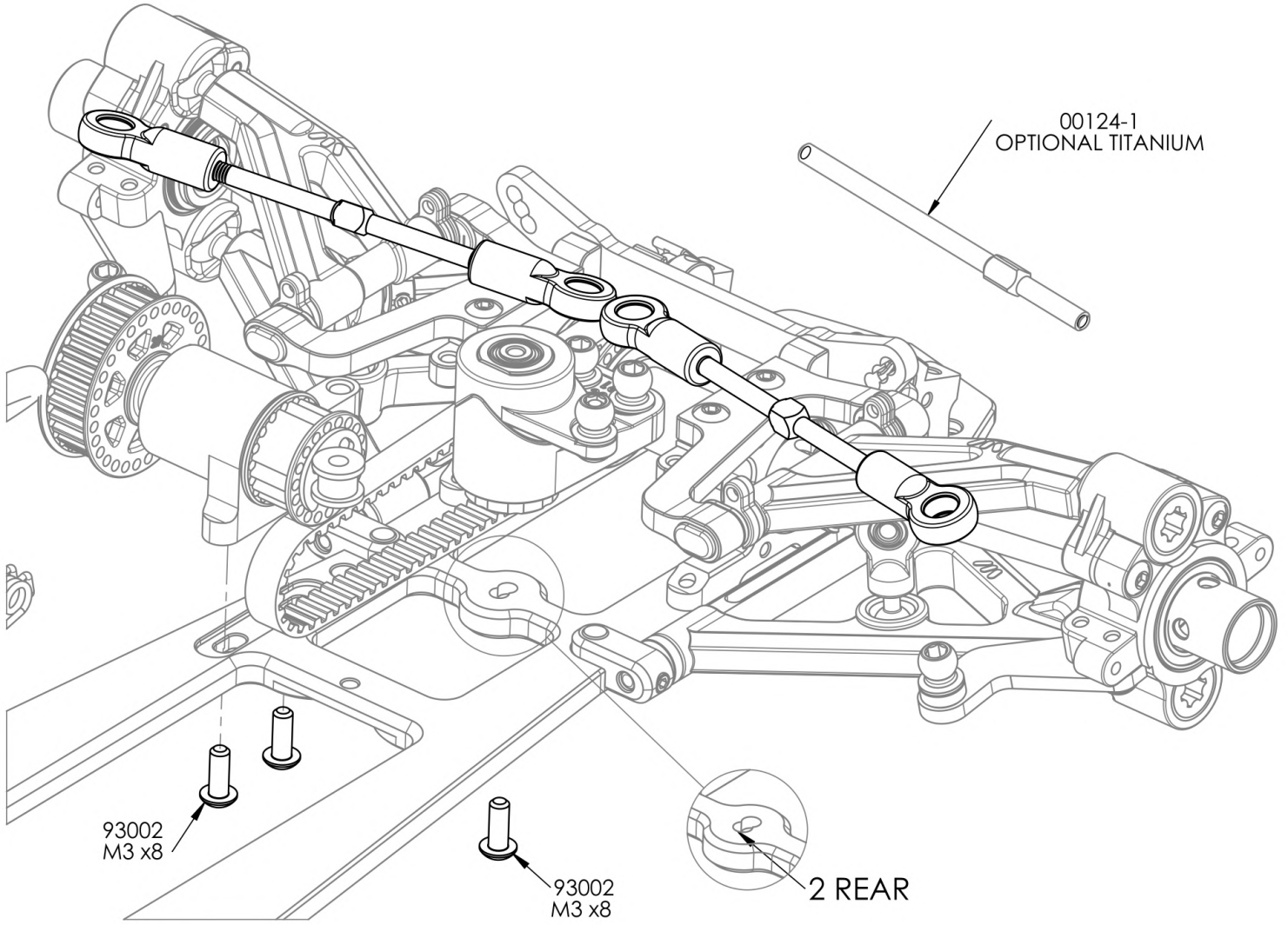


BAG 10

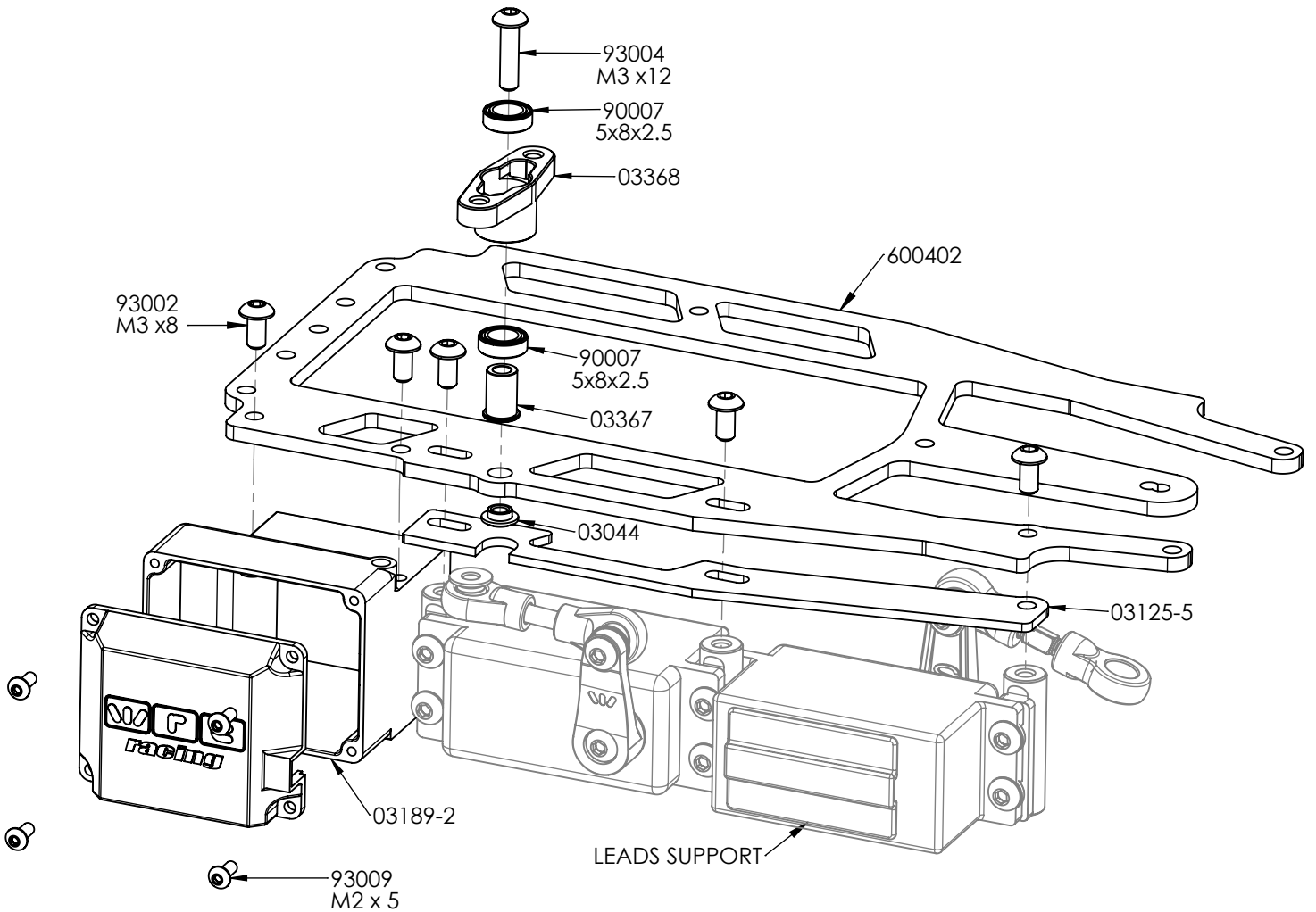
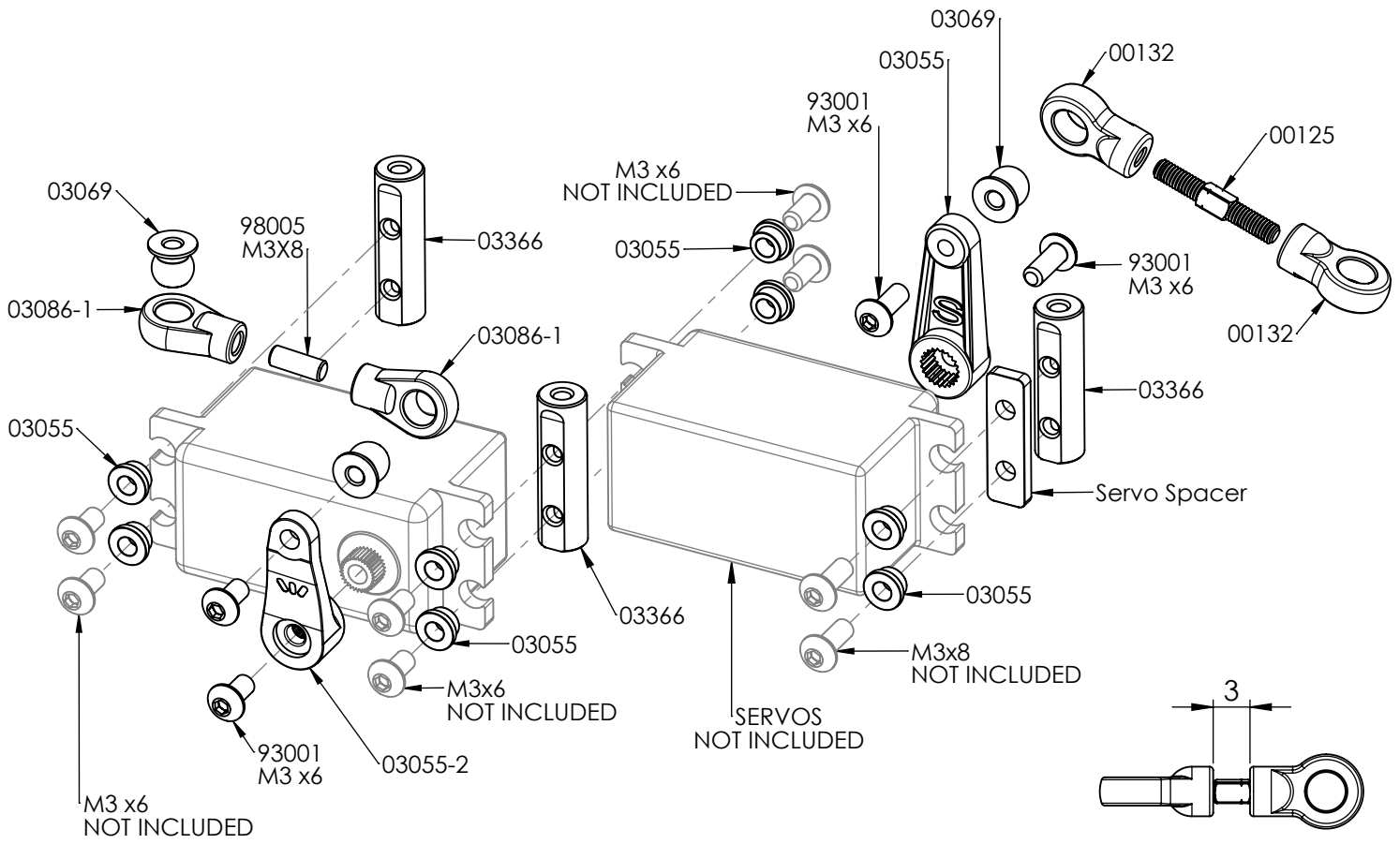


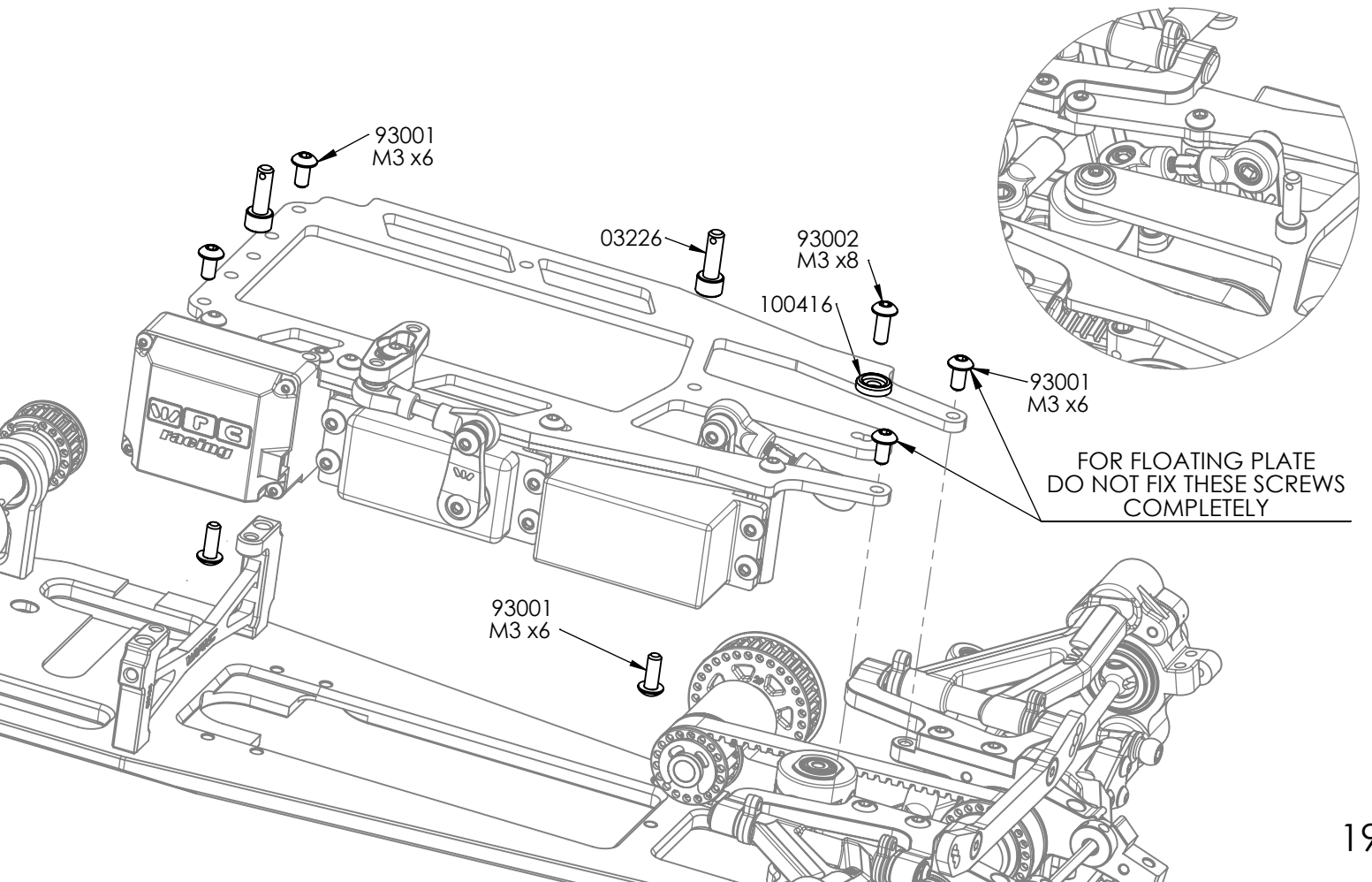
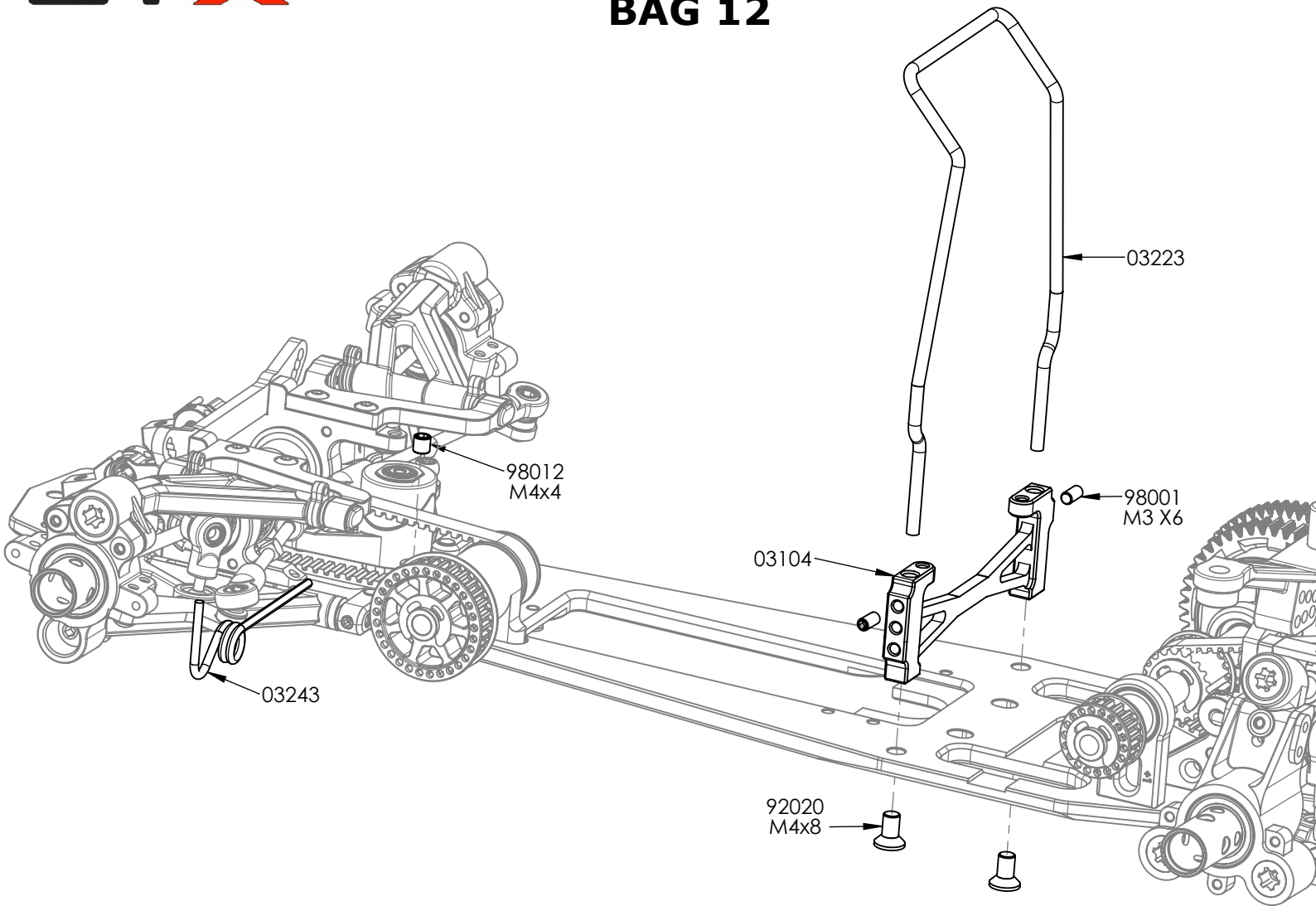
**PLEASE NOTE
ORIENTATION**

BAG 10

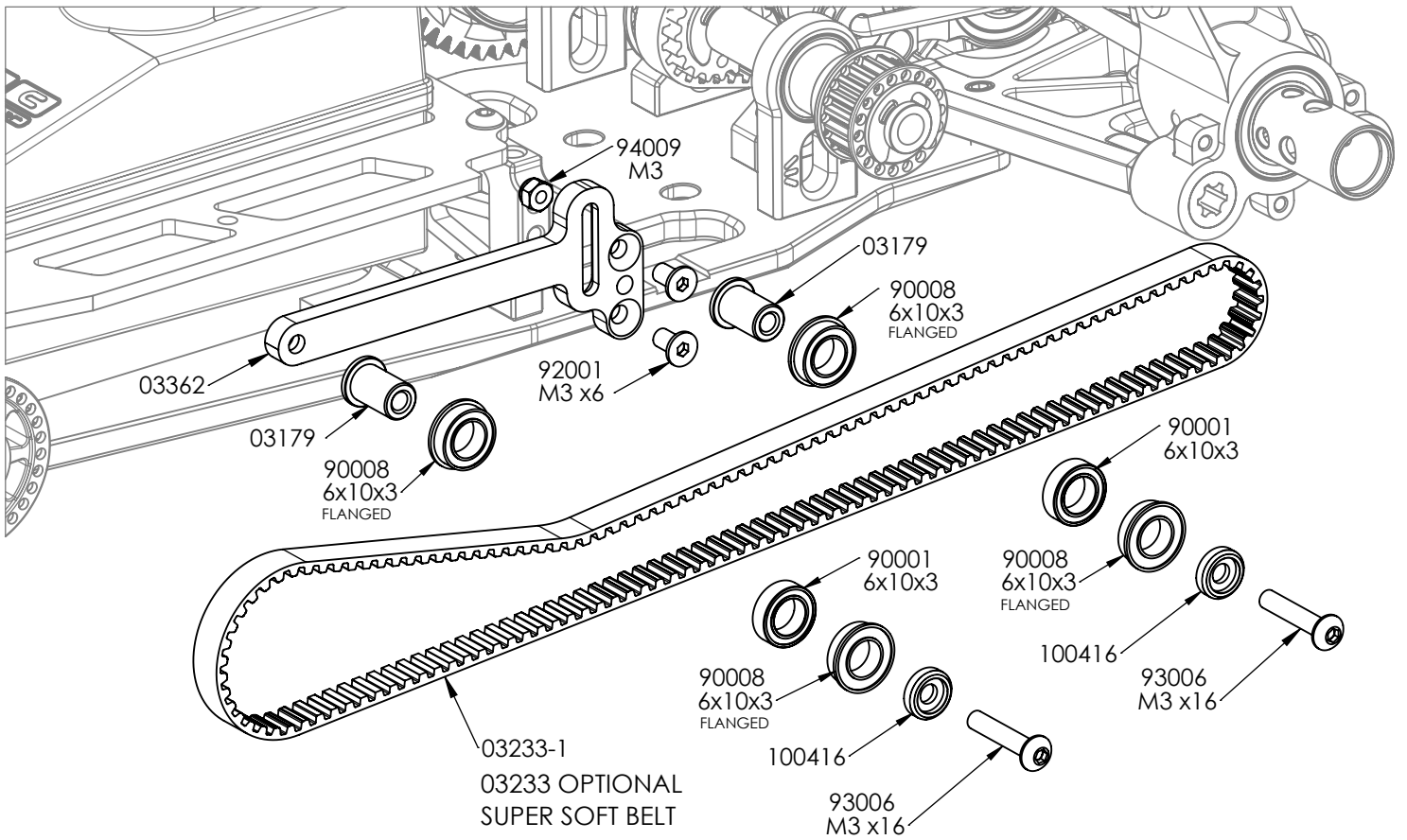
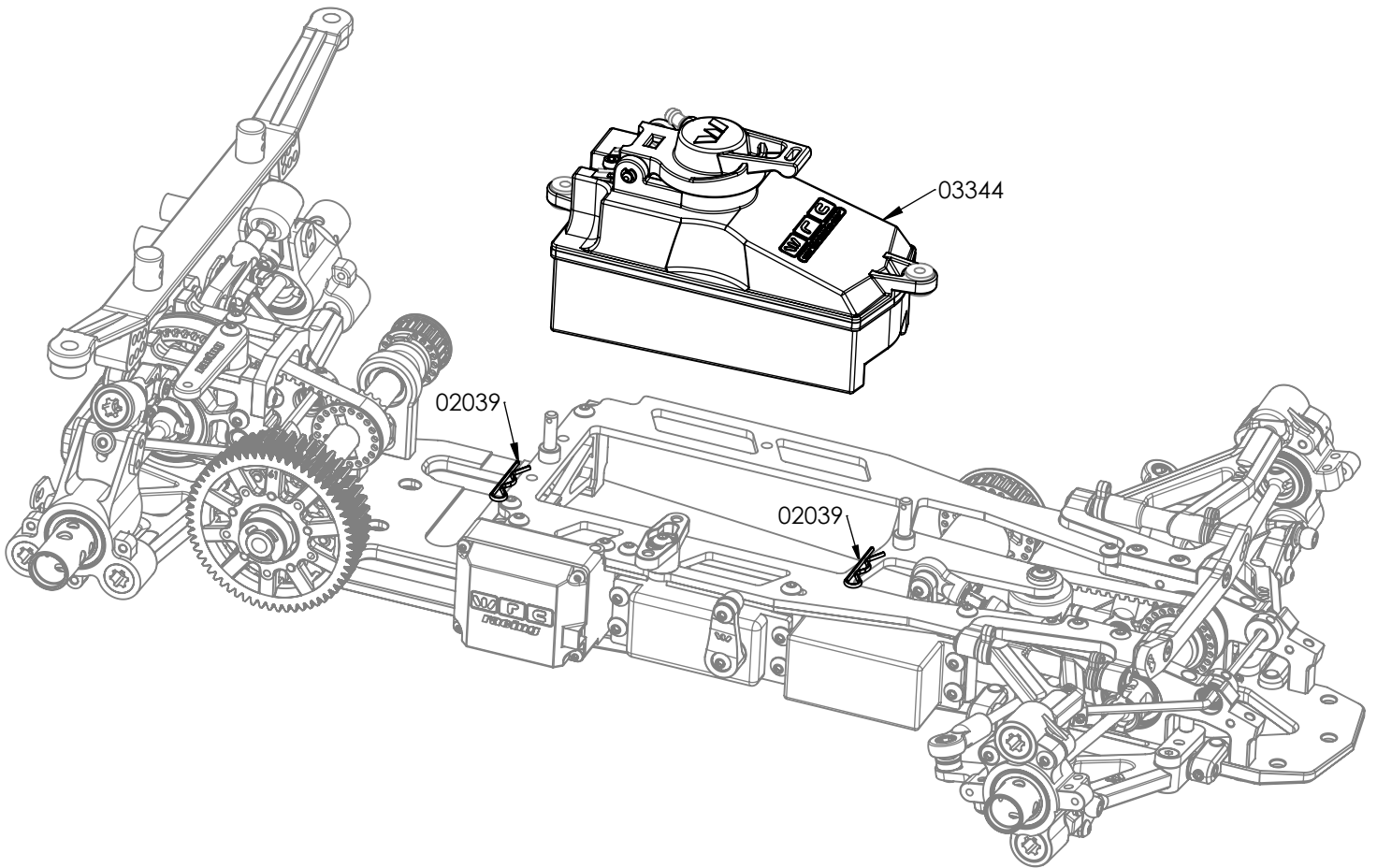


BAG 11





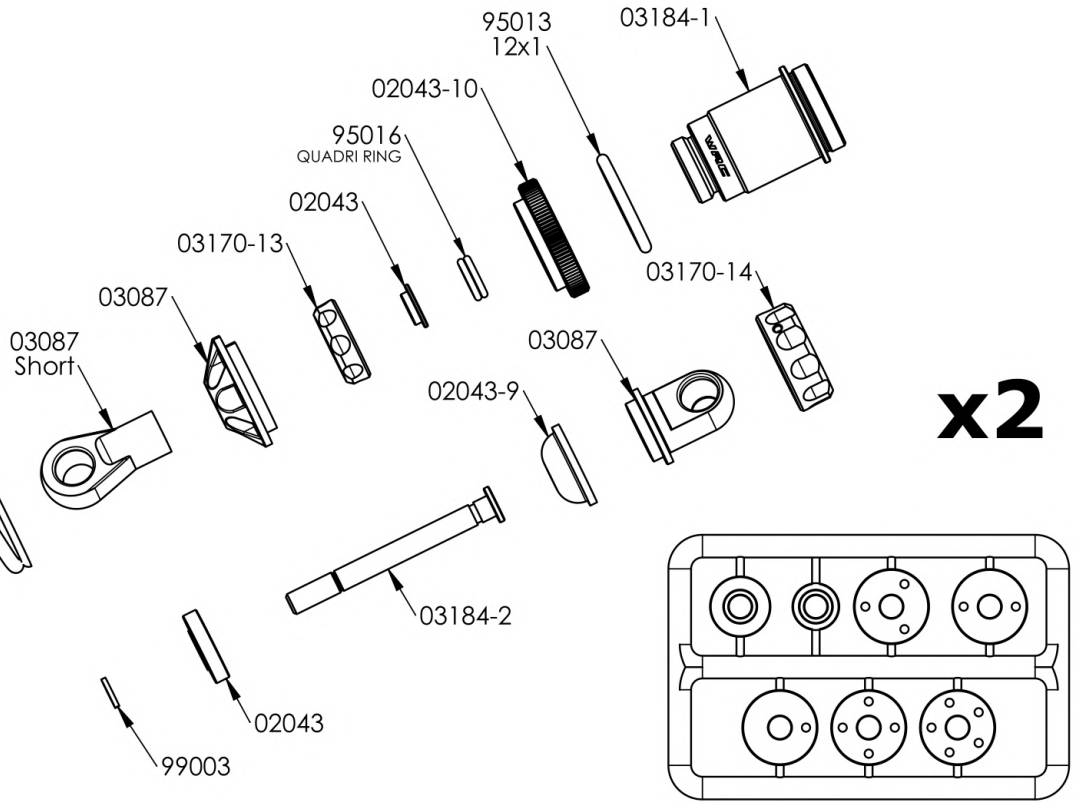
BAG 12



FRONT SHOCKS

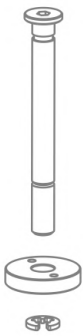
SPRINGS		
03216-F1	SOFT	YELLOW
03216-F2	MEDIUM (IN KIT)	WHITE
03216-F3	HARD	RED
03216-F4	PROGRESSIVE	BLUE

03216-F2



x2

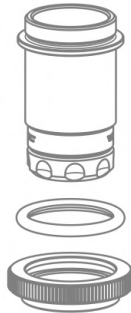
1



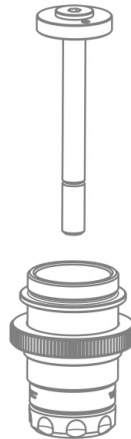
2



3



4



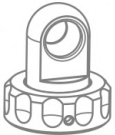
5



6



7



SHOCK FILLING

Fully extend the piston rod so the piston is at the bottom of the shock body.

Hold the shock upright and fill the shock body with shock oil as in the picture.

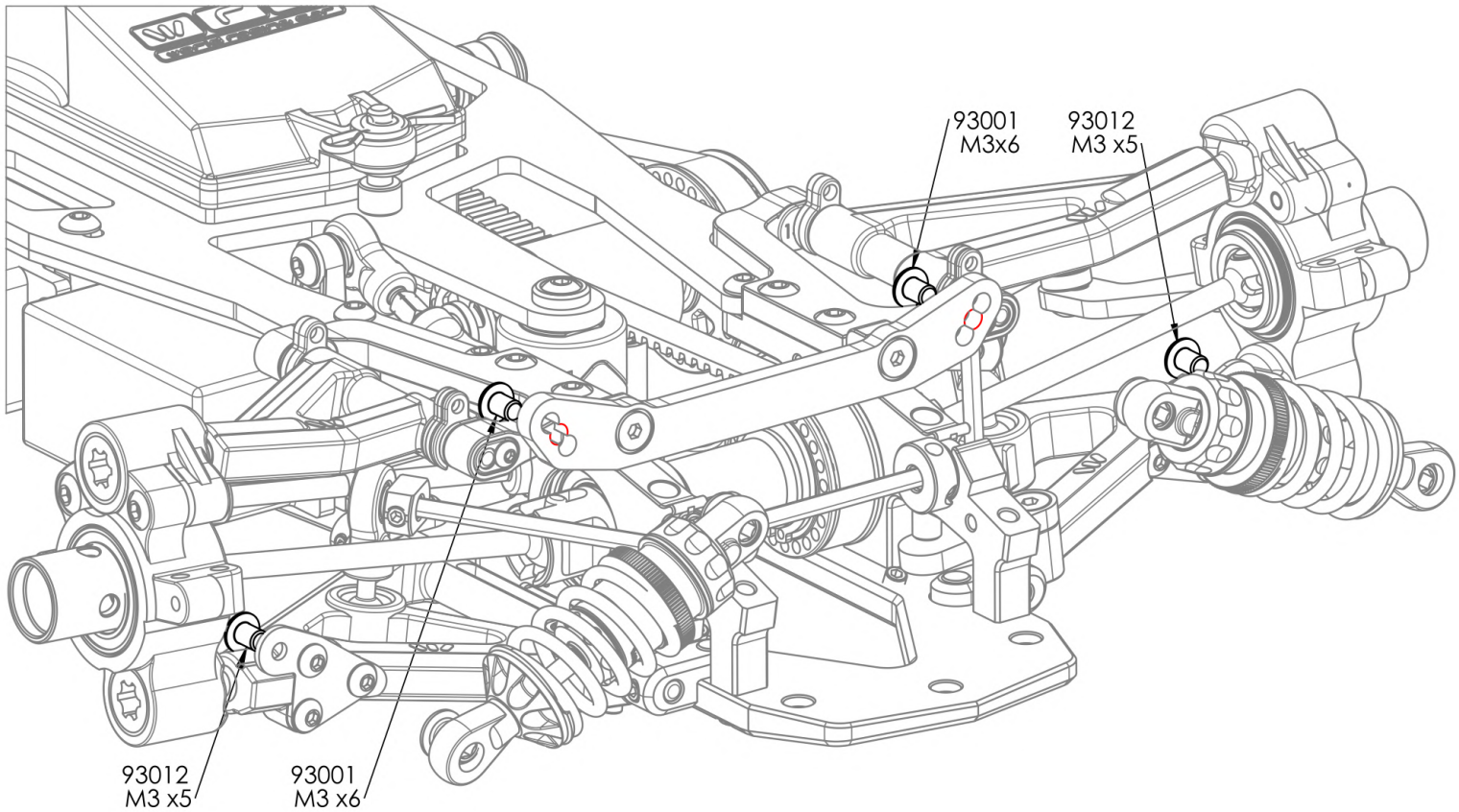
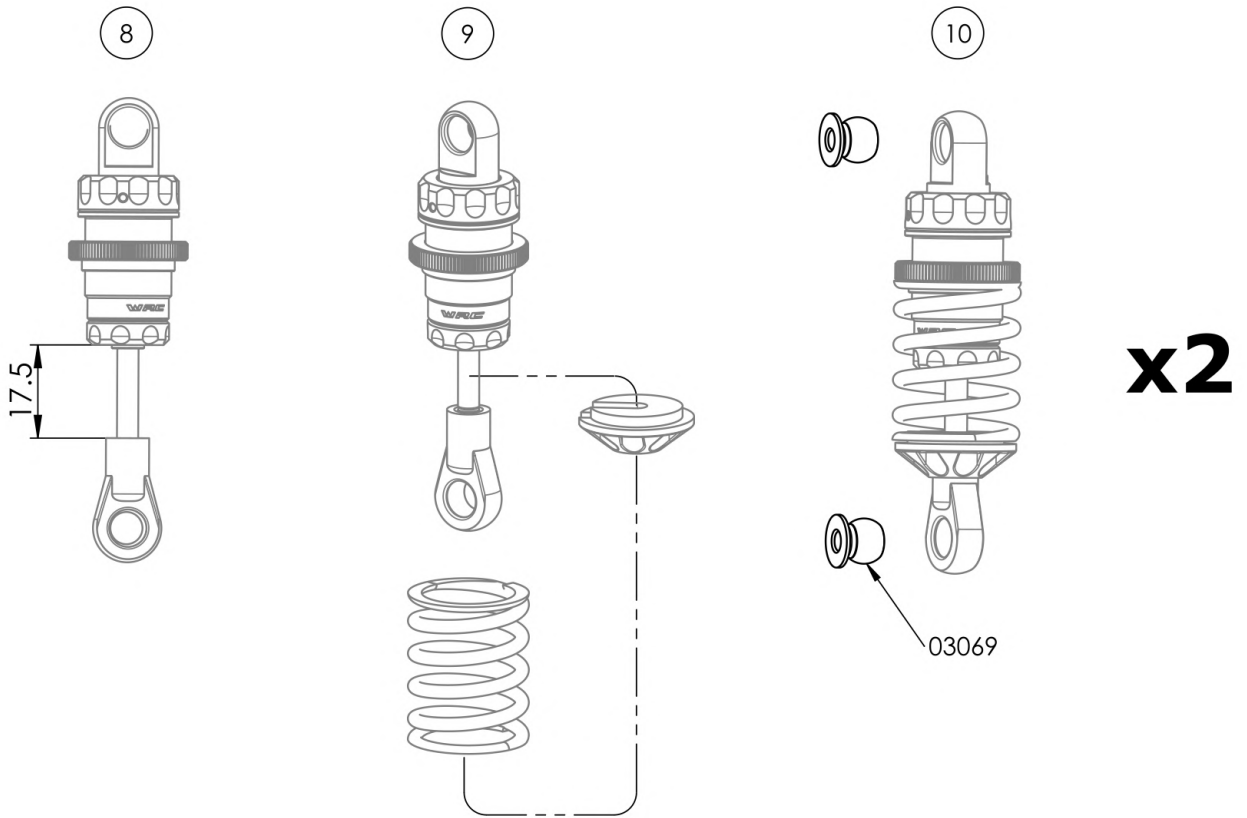
Let the oil settle and allow air bubbles to rise to the top. Slowly move the piston up and down until no more air bubbles appear. Add shock oil as necessary.

Pull the piston rod most of the way out of the shock bod. Let the shock rest for 5 minutes to allow the air bubbles to scape.



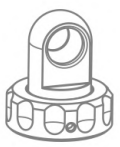
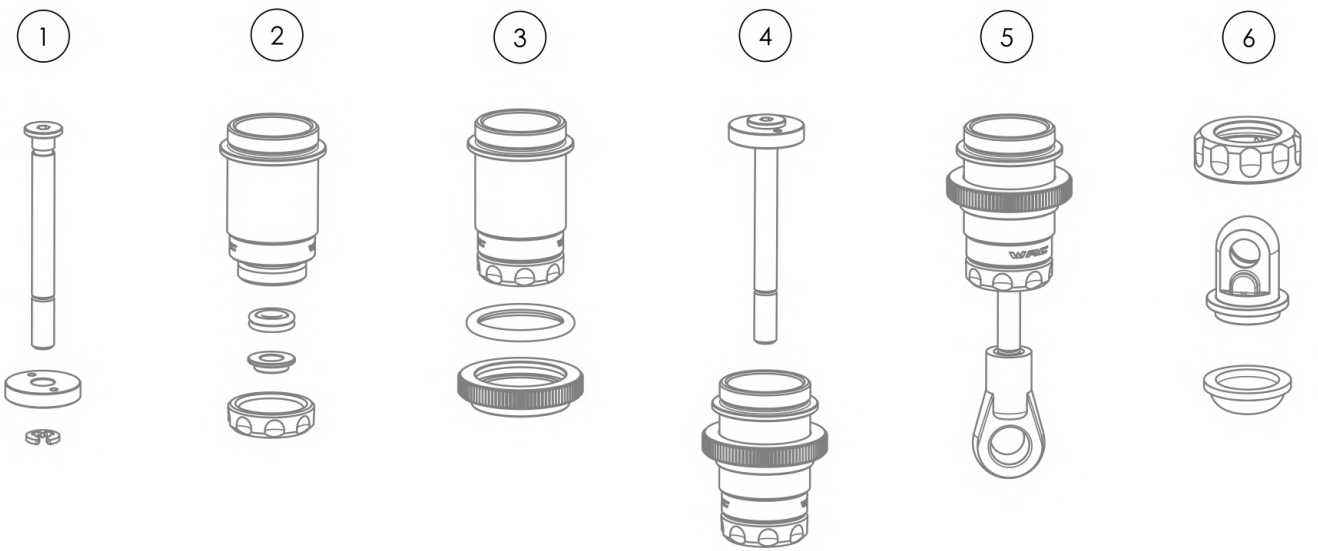
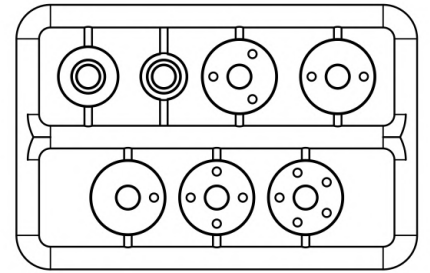
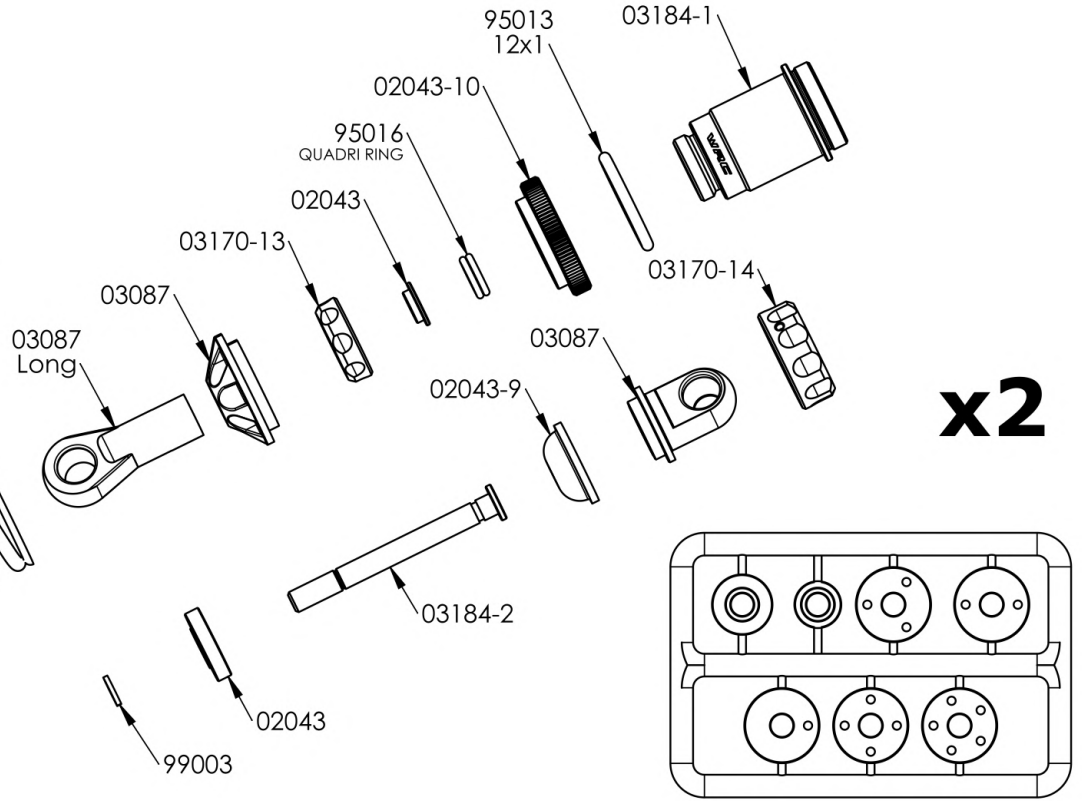
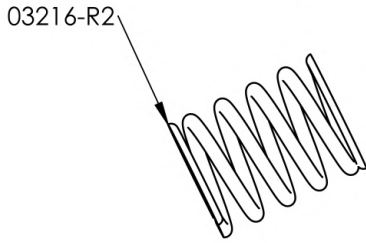
P- ONE SHOCKS OIL	
CODE	CST
RC0029	400
RC0062	500
RC0030	600 (IN KIT)
RC0063	700
RC0031	800

FRONT SHOCKS



REAR SHOCKS

SPRINGS		
03216-R1	SOFT	YELLOW
03216-R2	MEDIUM (IN KIT)	WHITE
03216-R3	HARD	RED
03216-R4	PROGRESSIVE	BLUE



7



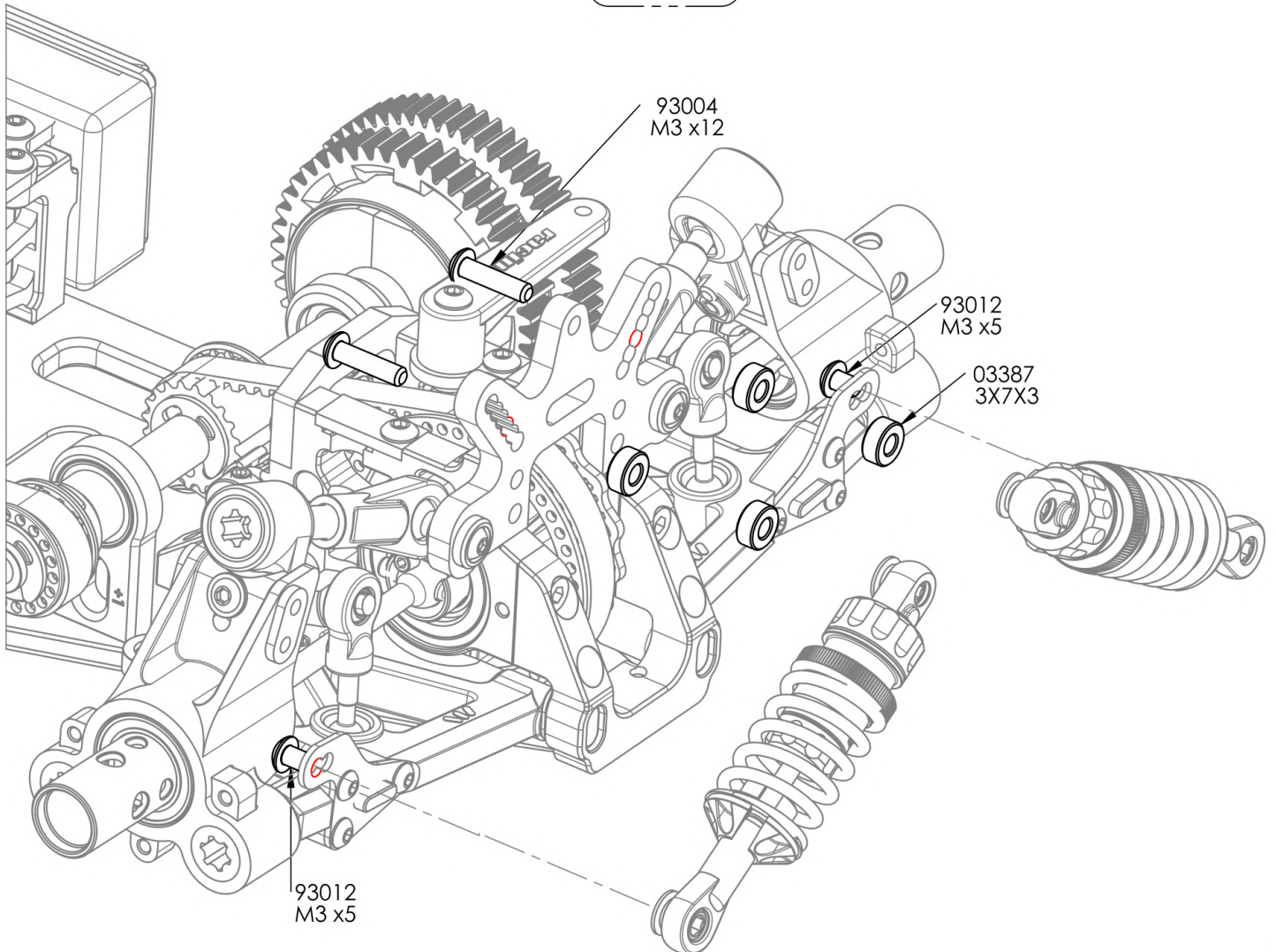
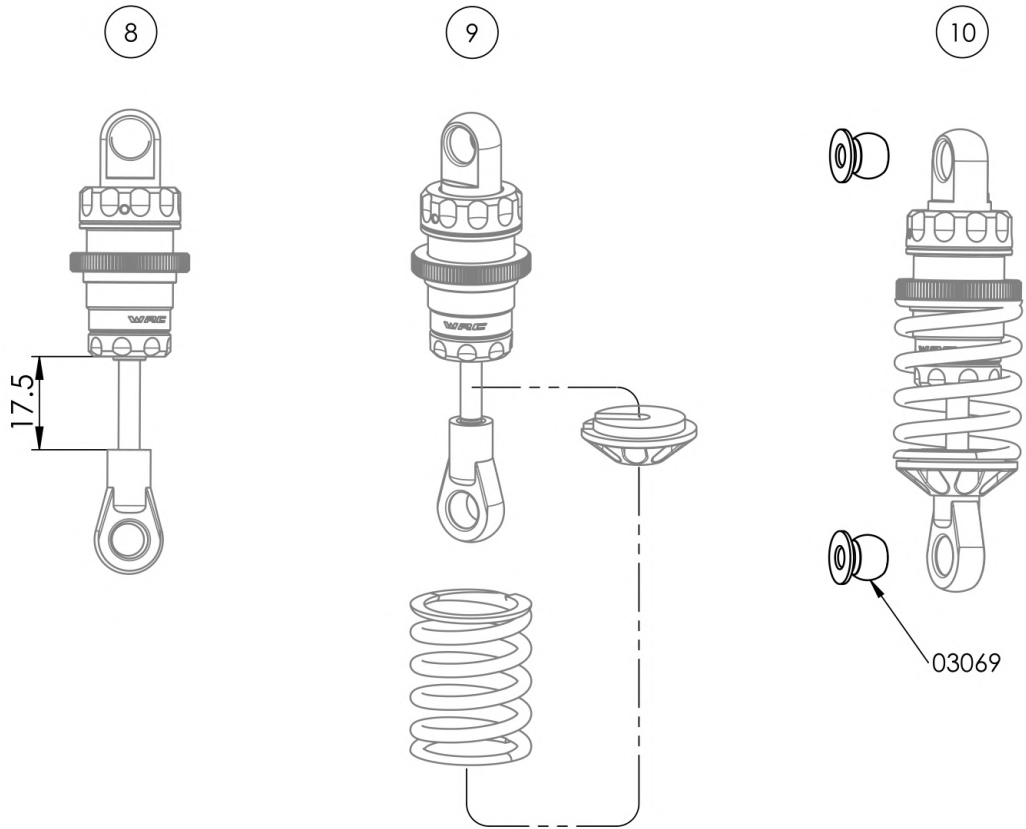
SHOCK FILLING

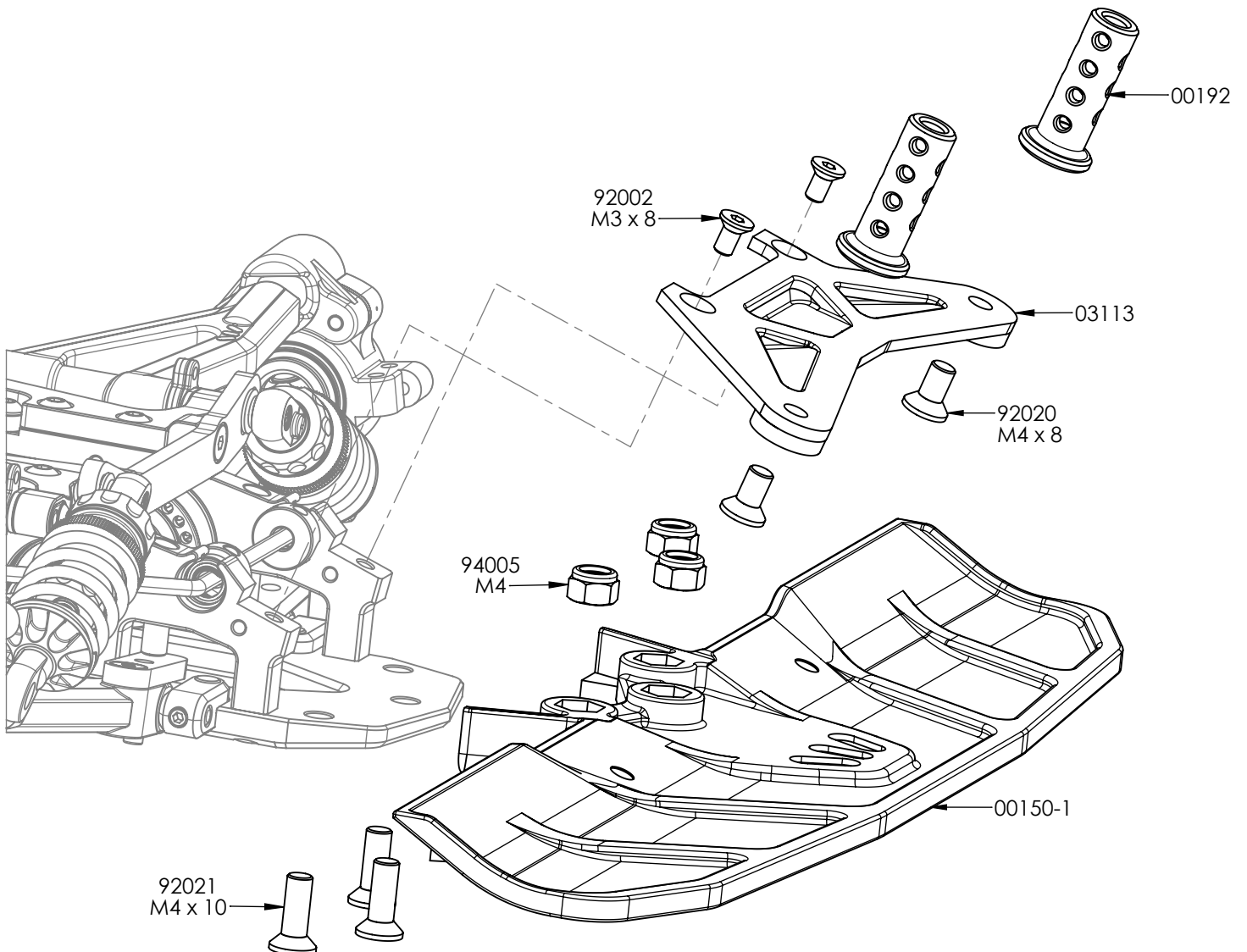
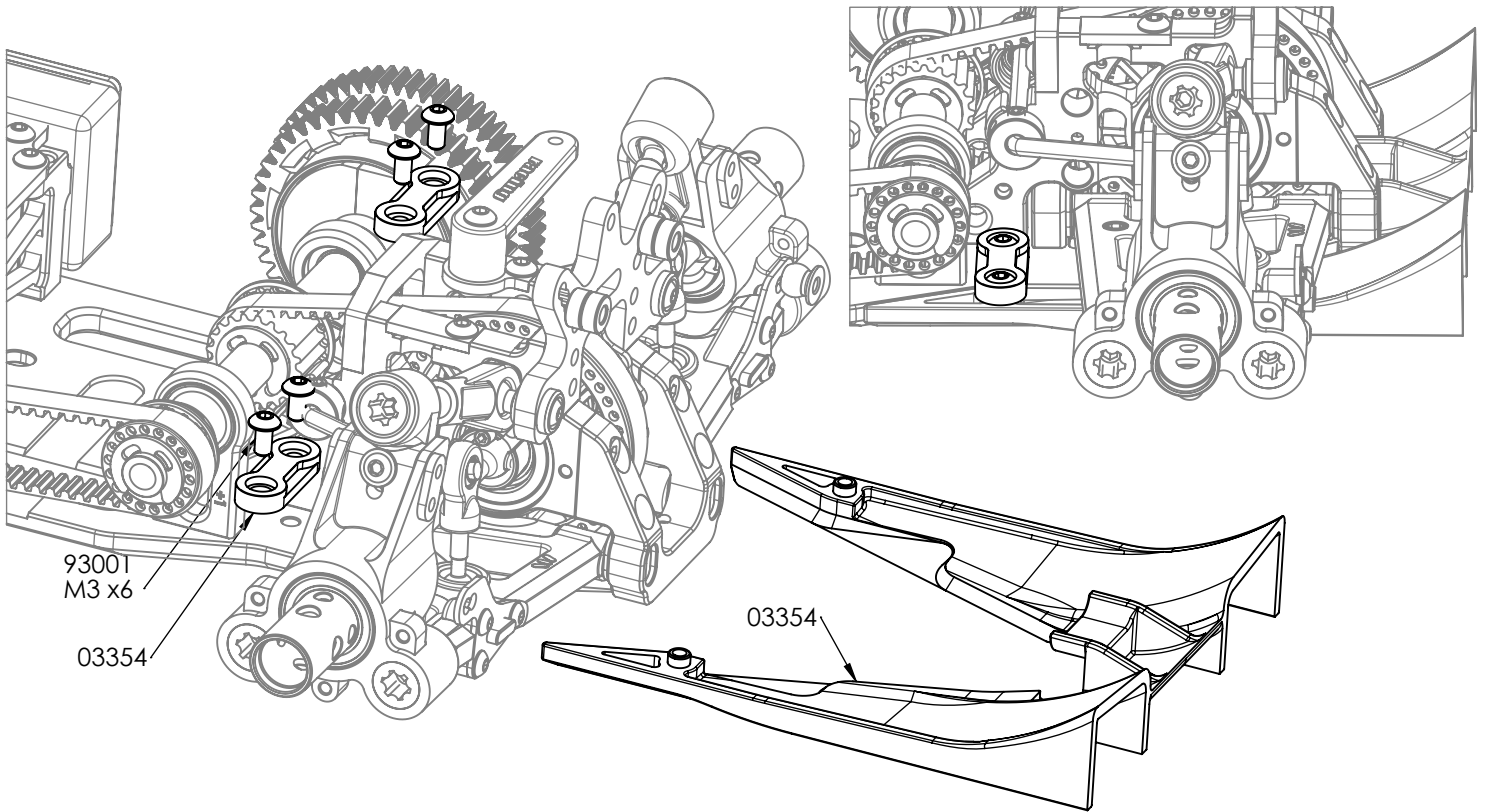
Fully extend the piston rod so the piston is at the bottom of the shock body.
 Hold the shock upright and fill the shock body with shock oil as in the picture.
 Let the oil settle and allow air bubbles to rise to the top.
 Slowly move the piston up and down until no more air bubbles appear.
 Add shock oil as necessary.
 Pull the piston rod most of the way out of the shock bod.
 Let the shock rest for 5 minutes to allow the air bubbles to scape.

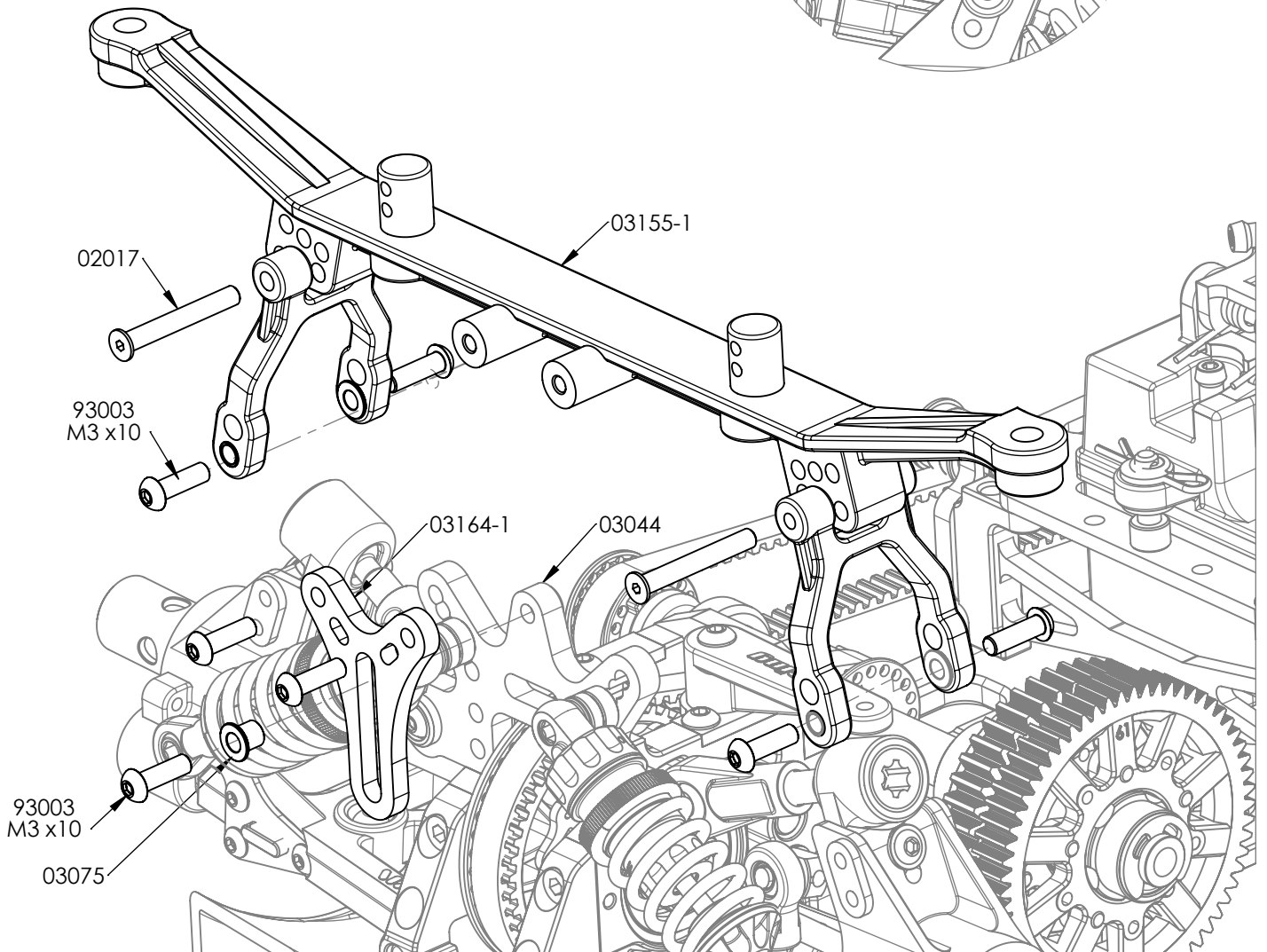
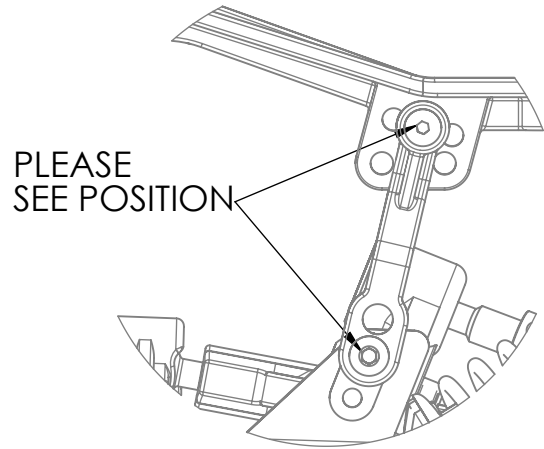
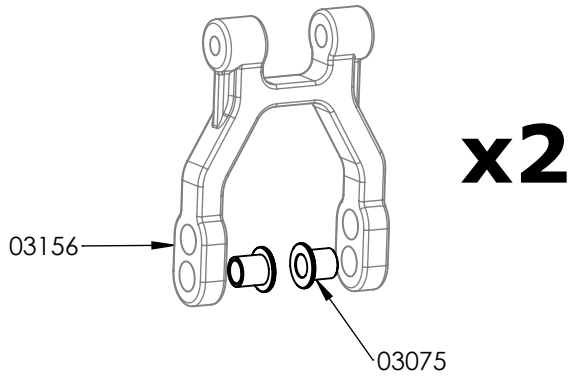


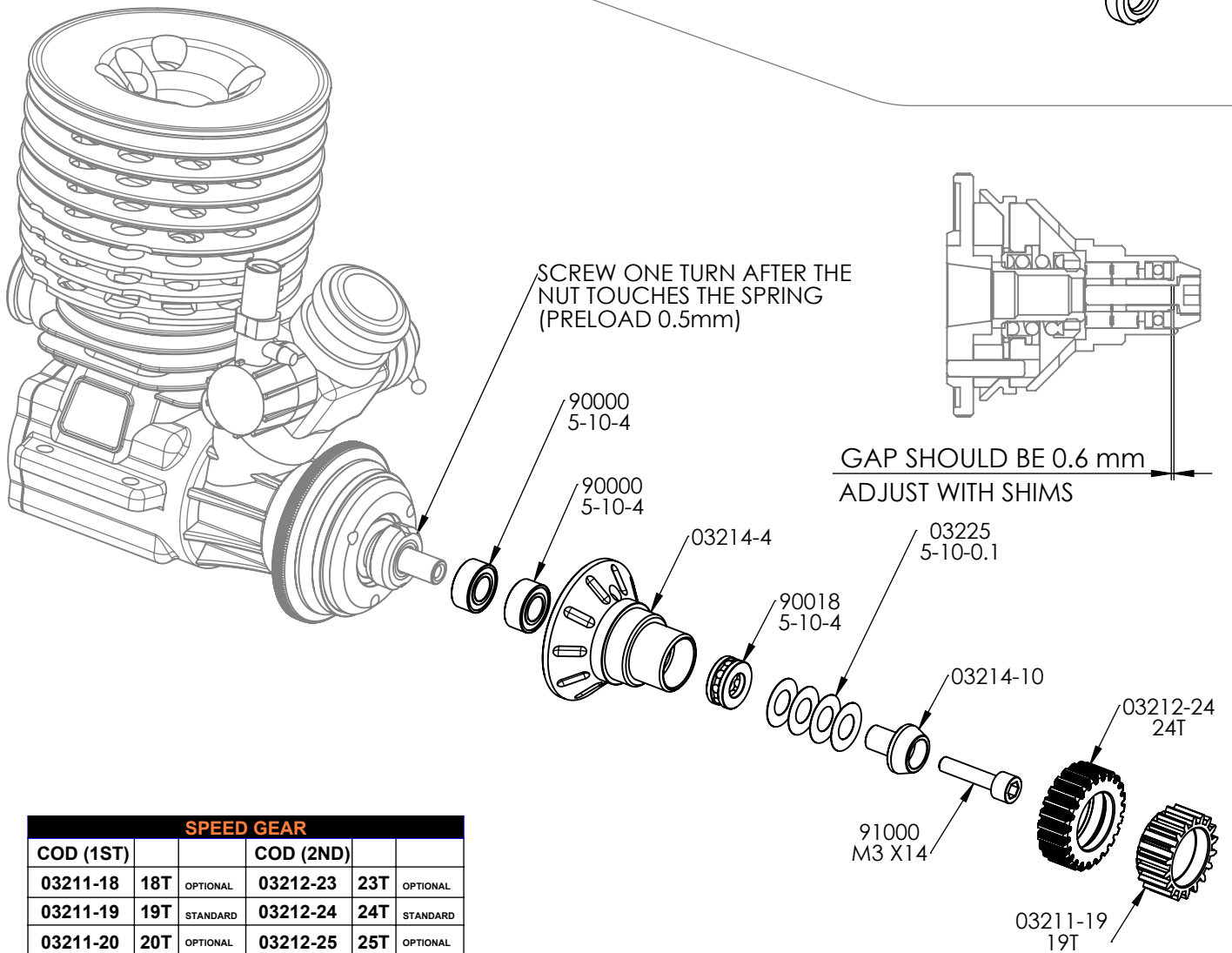
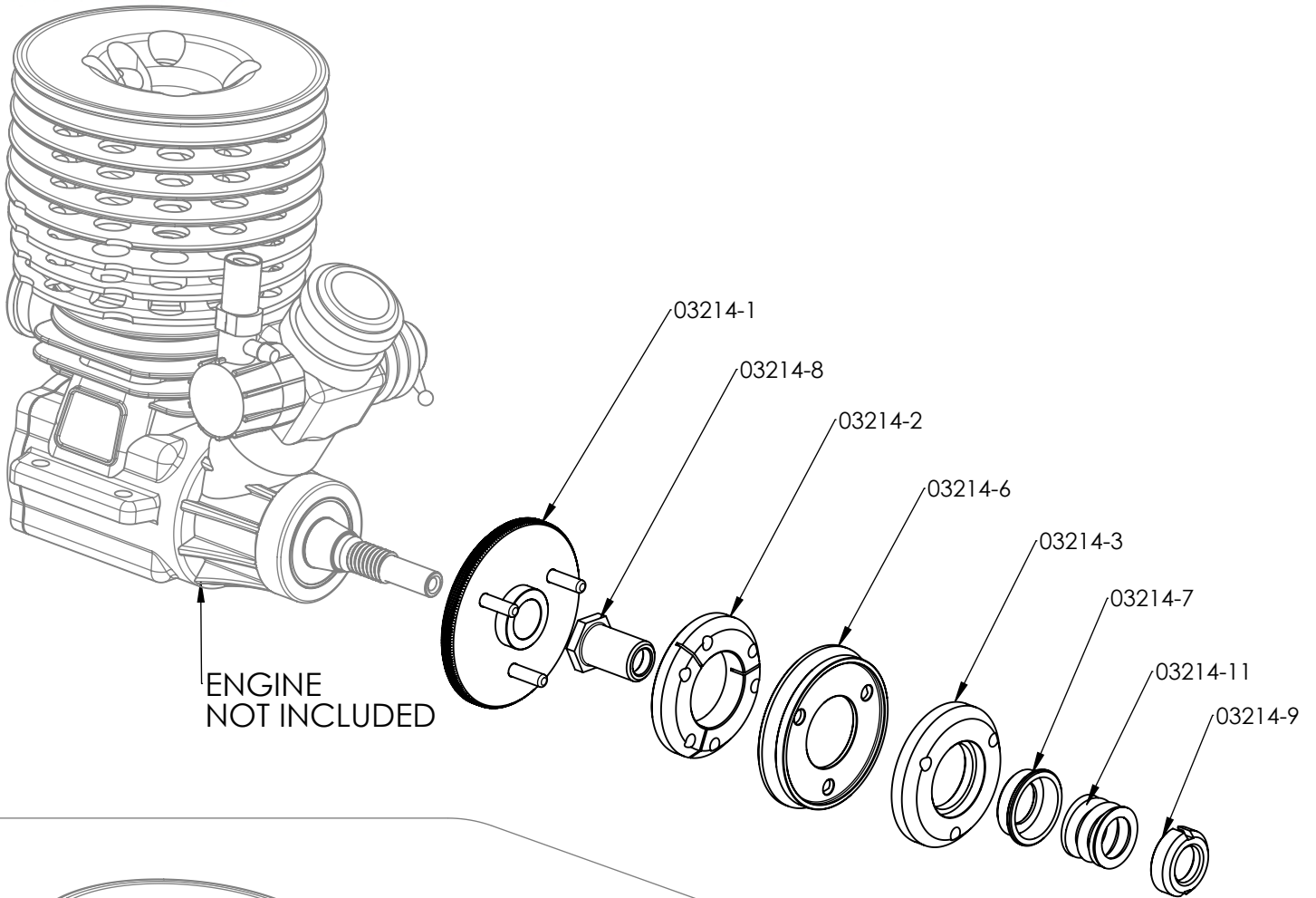
P- ONE SHOCKS OIL	
CODE	CST
RC0029	400
RC0062	500
RC0030	600 (IN KIT)
RC0063	700
RC0031	800

BAG 14 REAR SHOCKS

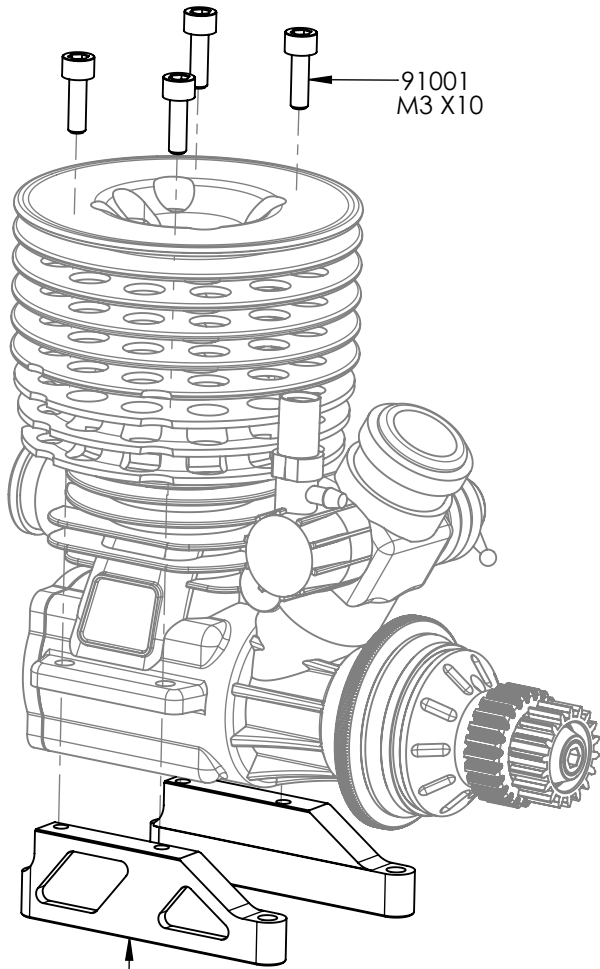






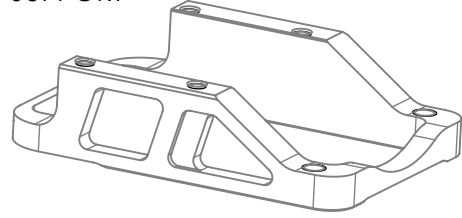


SPEED GEAR					
COD (1ST)			COD (2ND)		
03211-18	18T	OPTIONAL	03212-23	23T	OPTIONAL
03211-19	19T	STANDARD	03212-24	24T	STANDARD
03211-20	20T	OPTIONAL	03212-25	25T	OPTIONAL



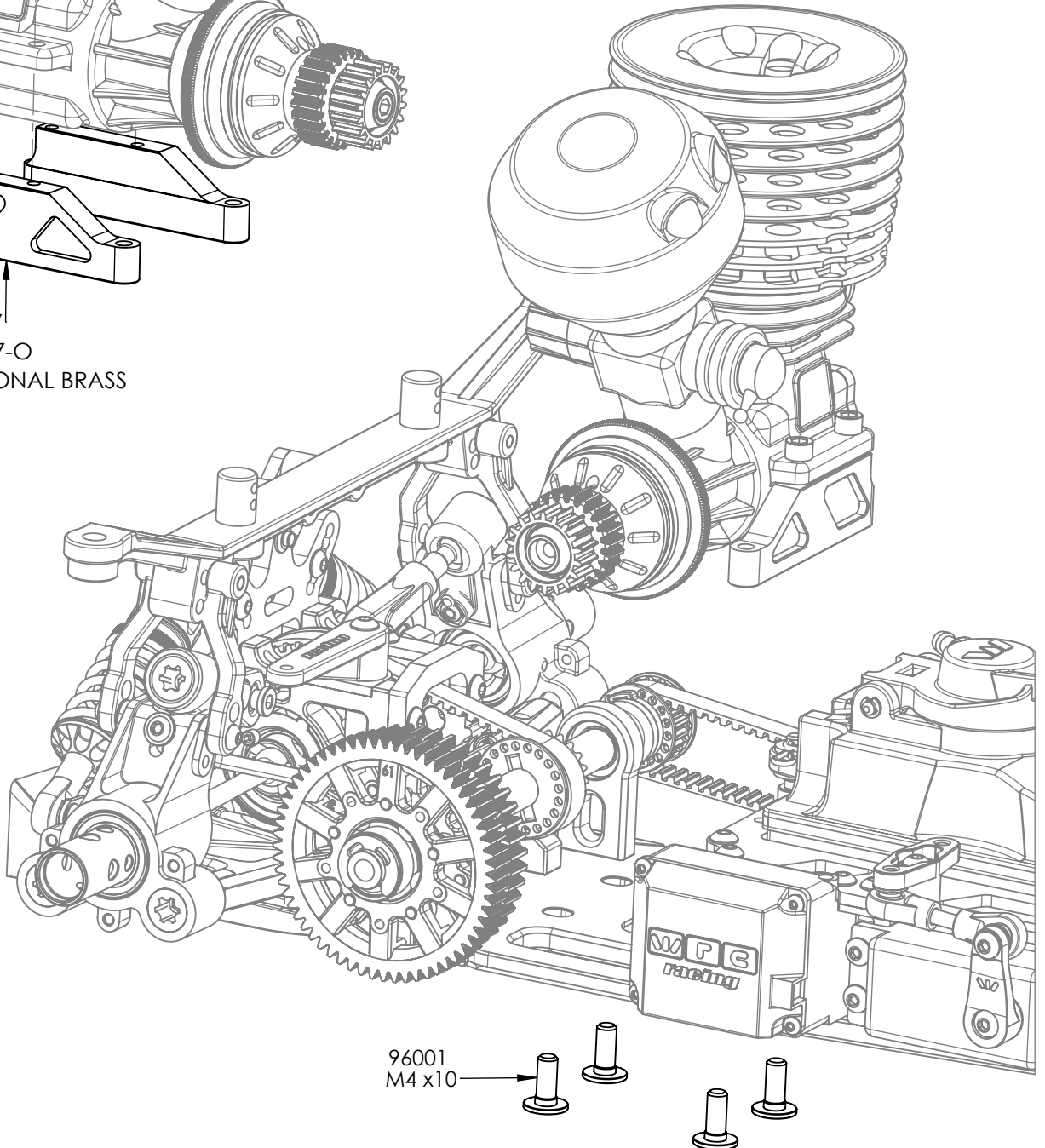
91001
M3 X10

OPTIONAL ONE PIECE ENGINE
SUPPORT

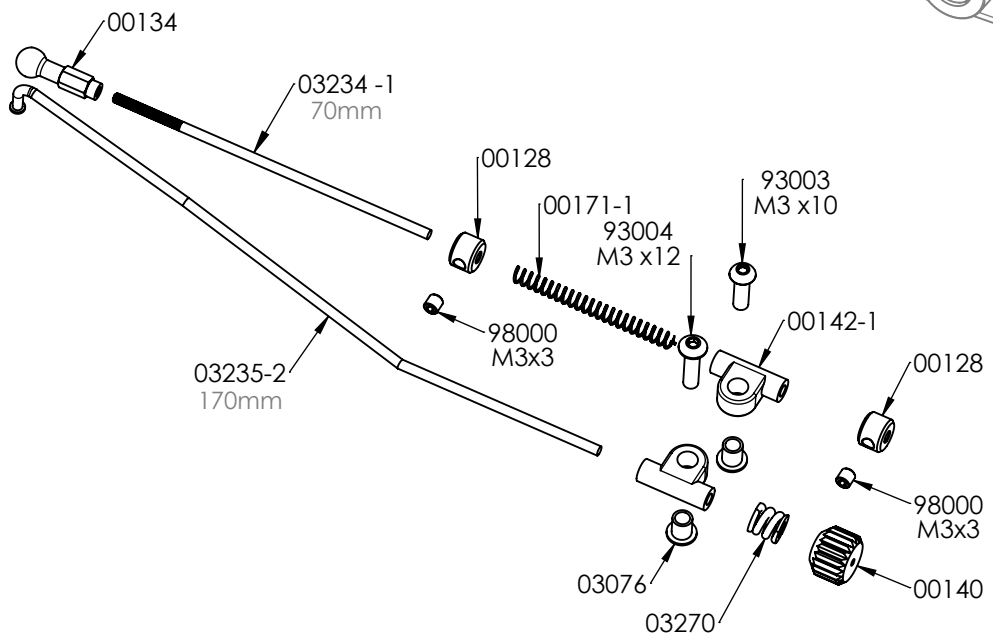
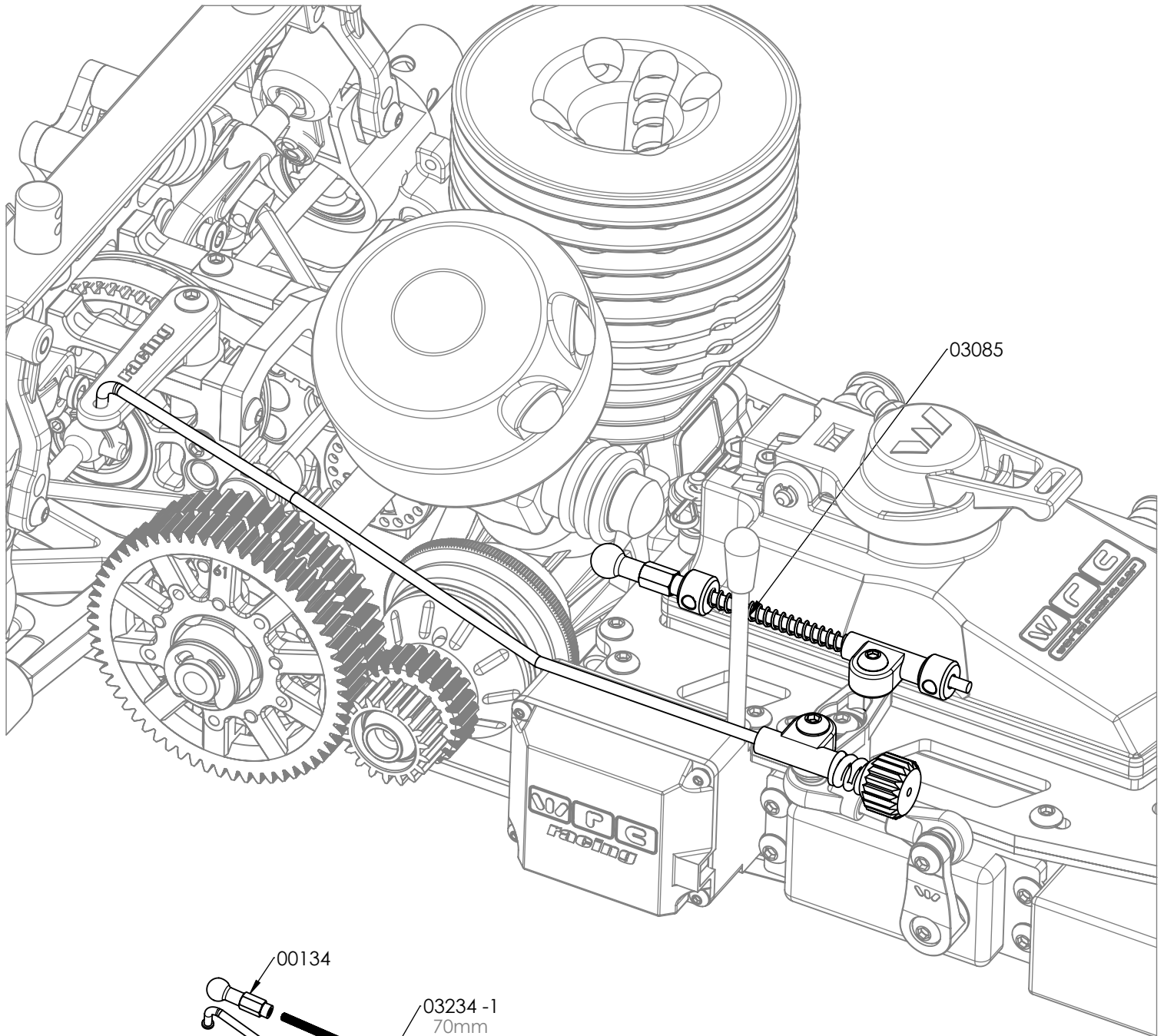


03197-1 BRASS
03197-2 ALUMINUM 7075

03197
03197-O
OPTIONAL BRASS

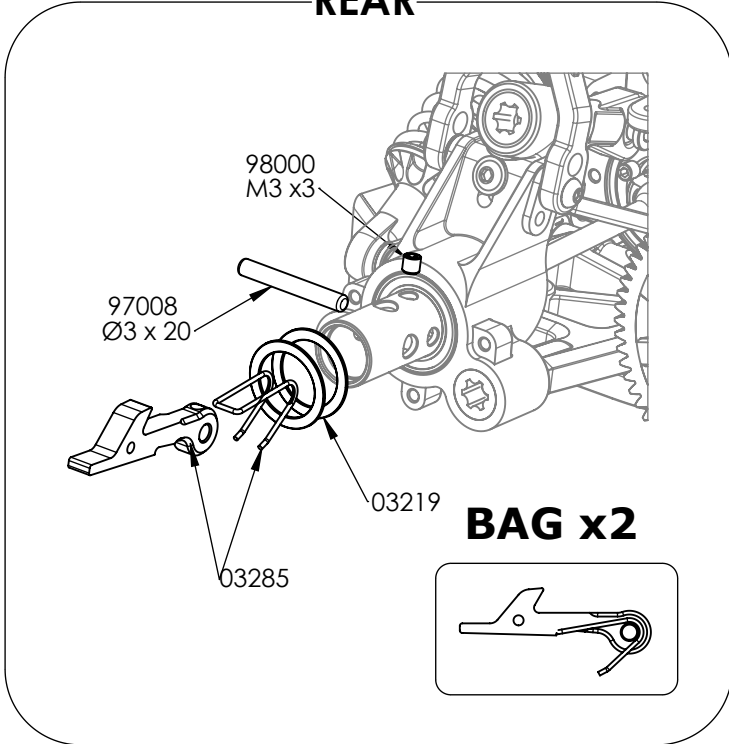


96001
M4 x10

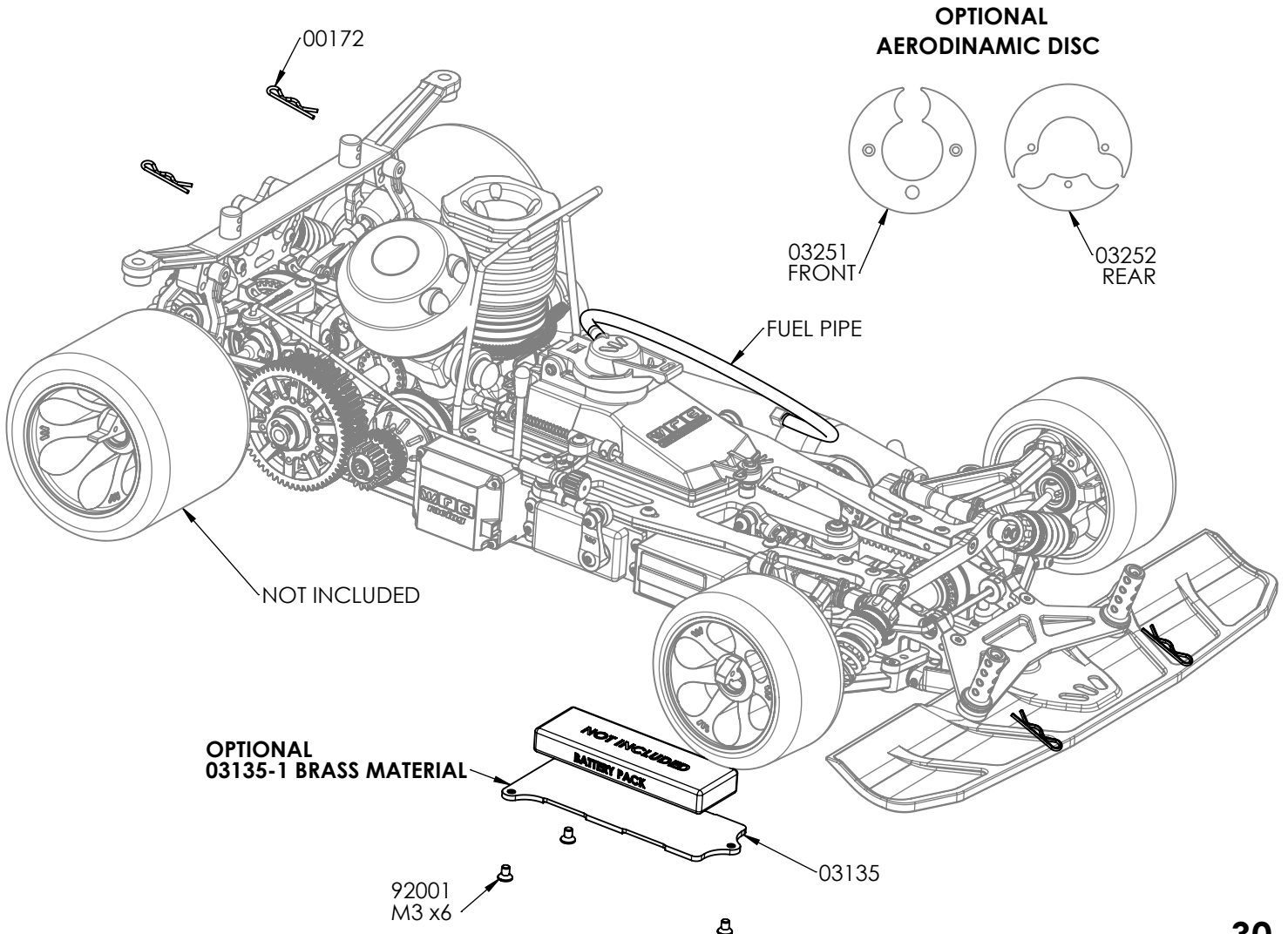
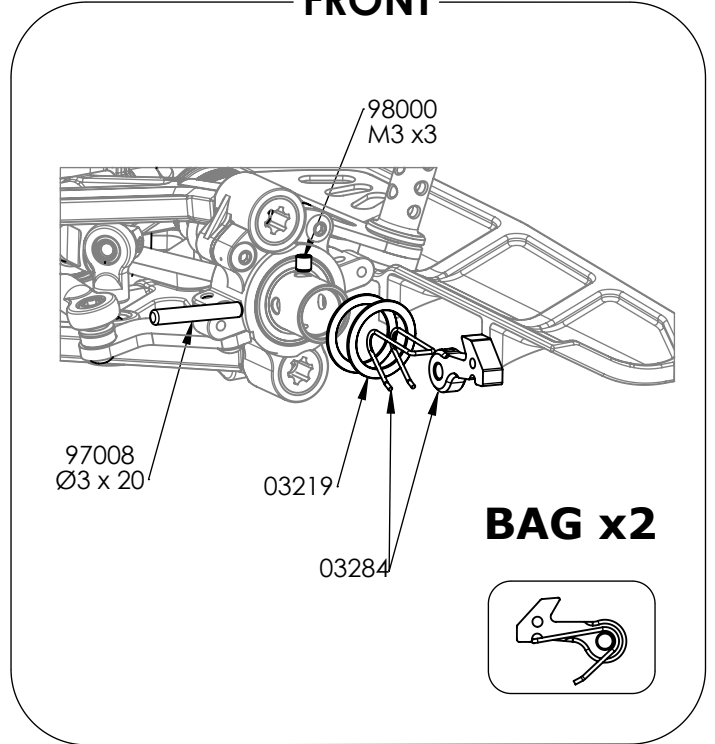


BAG 17

REAR



FRONT



GTX SETUP SHEET

NAME _____
 DATE _____
 TRACK _____

TRACK CONDITION

SURFACE SMOOTH MEDIUM BUMPY
SIZE TIGHT MEDIUM FAST
TRACTION LOW MEDIUM HIGH

TRANSMISSION

PINION 1st: 19 2nd: 24
SPUR GEAR 1st: 61 2nd: 57

CLUTCH SETTINGS

SHOE STANDARD OPTIONAL
SPRING 0.50
BELL CLEARANCE /mm 0.50
BELL AXIAL PLAY /mm 0.10

SHOCKS SETTINGS

	FRONT	REAR
SPRINGS		
OIL	600	600
PISTON	ORIGINAL	ORIGINAL
LENGHT /mm		
PRELOAD /mm		
REBOUND %	10%	10%

ANTI-ROLL BAR

FRONT	2.3
REAR	3.2

ARM BUSHES ORIENTATION

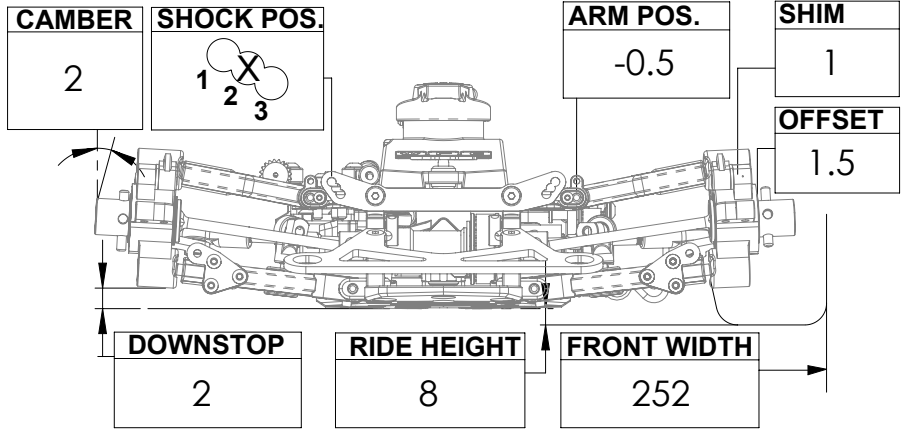
+0.5mm -0.5mm +1.0mm -1.0mm +1.5mm -1.5mm

BATTERY MOUNT

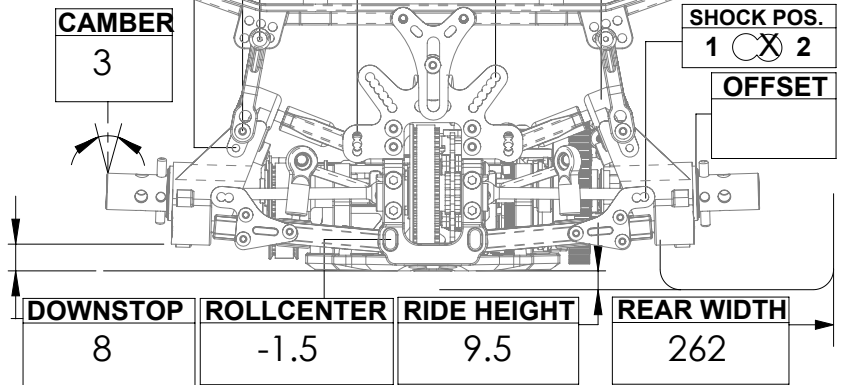
STANDARD BRASS

ENGINE MOUNT

STANDARD BRASS



BODY MOUNT					ROLLCENT.	SHOCK POS.	REAR UPRIGHT
Height (mm)	1 <input checked="" type="radio"/> 1 <input type="radio"/>	<input checked="" type="radio"/> <input type="radio"/> <input type="radio"/>	1 2 3		1 <input type="radio"/> 2 <input checked="" type="radio"/> 3 <input type="radio"/>	4 2 1 6 <input checked="" type="radio"/> 5 3	HEIGHT <input checked="" type="radio"/> HIGH <input type="radio"/> LOW
	2 <input type="radio"/> 2 <input checked="" type="radio"/>	1 2 3					SHIM <input type="radio"/> YES <input checked="" type="radio"/> NO



DISC
 YES
 NO

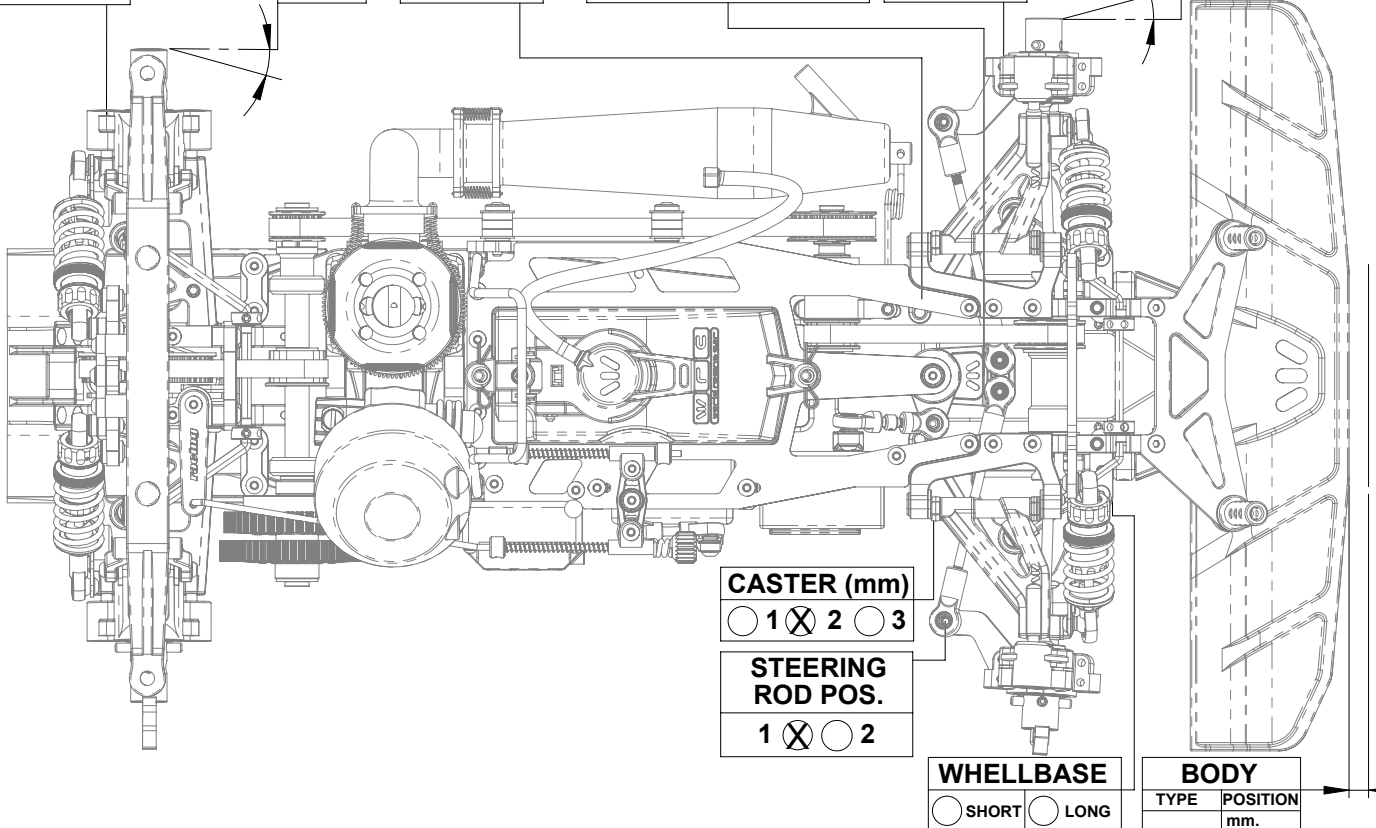
TOE°
 2.5

FLOATING PLATE
 YES
 NO

SERVO SAVER POS.
 FRONT (1)
 REAR (2)

DISC
 YES
 NO

TOE°
 1.5



CASTER (mm)
 1 2 3

STEERING ROD POS.
 1 2

WHEELBASE
 SHORT LONG

BODY
 TYPE POSITION
 mm.

GTX SETUP SHEET

NAME _____
 DATE _____
 TRACK _____

TRACK CONDITION

SURFACE SMOOTH MEDIUM BUMPY
SIZE TIGHT MEDIUM FAST
TRACTION LOW MEDIUM HIGH

TRANSMISSION

PINION 1st: _____ 2nd: _____
SPUR GEAR 1st: _____ 2nd: _____

CLUTCH SETTINGS

SHOE STANDARD OPTIONAL

SPRING

BELL CLEARANCE /mm _____
BELL AXIAL PLAY /mm _____

SHOCKS SETTINGS

	FRONT	REAR
SPRINGS		
OIL		
PISTON		
LENGHT /mm		
PRELOAD /mm		
REBOUND %		

ANTI-ROLL BAR

FRONT _____
REAR _____

ARM BUSHES ORIENTATION

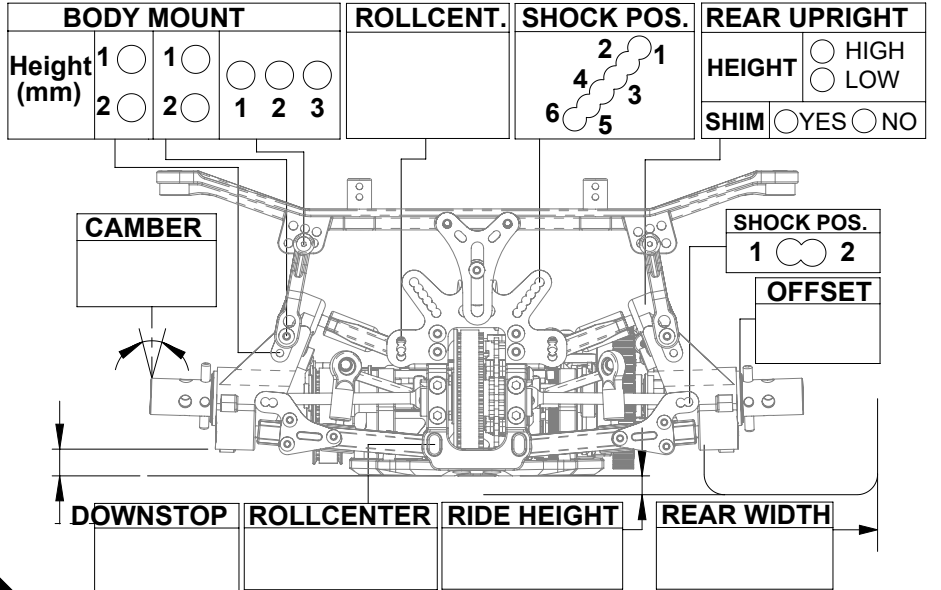
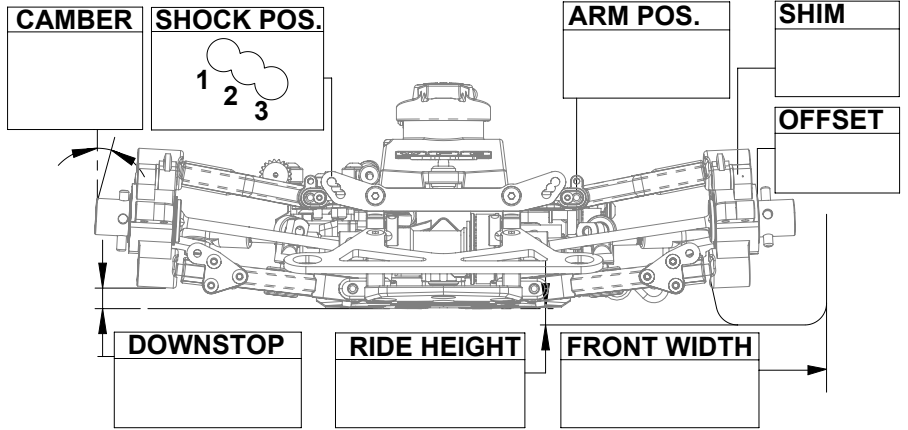
 + 0.5mm / - 0.5mm  + 1.0mm / - 1.0mm  + 1.5mm / - 1.5mm

BATTERY MOUNT

STANDARD BRASS

ENGINE MOUNT

STANDARD BRASS



DISC
 YES
 NO

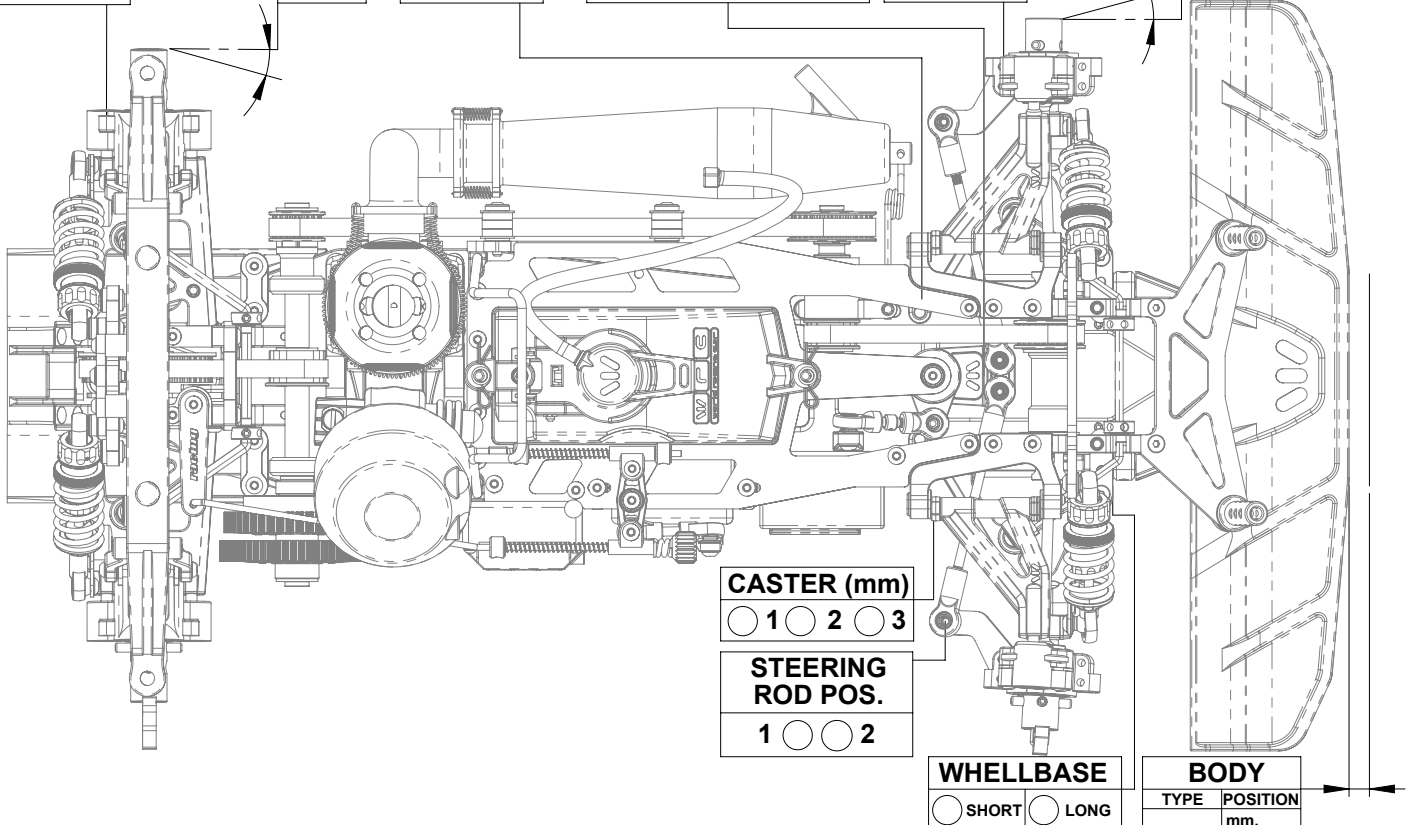
TOE° _____

FLOATING PLATE
 YES
 NO

SERVO SAVER POS.
 FRONT (1)
 REAR (2)

DISC
 YES
 NO

TOE° _____



CASTER (mm)
 1 2 3

STEERING ROD POS.
 1 2

WHEELBASE
 SHORT LONG

BODY
 TYPE _____ POSITION _____
 mm.

WIRC
PROFESSIONAL RC CAR

WWW.WIRCACING.COM