

# GT X<sup>EP</sup>.4

NEW GENERATION RC CAR

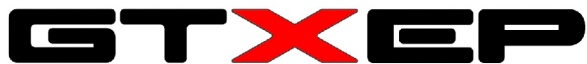
1/8 SCALE ON ROAD  
ELECTRIC RACING CAR



INSTRUCTION MANUAL

**WIRC**  
PROFESSIONAL RC CAR

[WWW.WIRCACING.COM](http://WWW.WIRCACING.COM)



## INTRODUCTION

GTX EP is a new generation high quality 1/8 scale electric onroad car.  
GTX EP is supplied in a box equipped with Instruction Manual.  
Its use is intended for more than 16 years old persons with experience on rc model car field.  
Children and all the persons without this requirement **MUST** have direct supervision of a knowledgeable adult responsible.

## SAFETY PRECAUTIONS

Instruction Manual **MUST** be read and fully understood before to start building and operating functions.  
Always keep Instruction Manual in safety place, ready to be consulted for any reference you need.  
Use only original WIRC spare parts.

## GENERAL INFORMATION

Assemble the kit only away from the reach of children.  
Follow the building and operating instructions using the utmost care.  
Don't put any part of your body inside rotating and moving elements as this may cause damage or serious injury.  
Check and clean the model before putting it away.  
Don't use your model car in public places or in roads and areas where it could generate conflict with person or vehicular traffic.  
The model car is controlled by radio: you **MUST** put great care to avoid loss of radio control always keeping a safety margin all around your model in order to prevent any collision.  
Operating frequency: check and be sure it is clear and not shared with anybody at same time; it could cause loss of control of the RC model.  
Always turn on your transmitter before you turn on the receiver in the car and always turn off the receiver before you turn off your transmitter.  
Keep the wheels of the model off the ground when checking the operation of the radio equipment.  
Disconnect the battery pack before storing your model.

## WARRANTY

WIRC guarantees this model kit to be free from defects in both material and workmanship within 30 days of purchase.  
The total monetary value under warranty will in no case exceed the cost of the original kit purchased.  
This warranty doesn't cover any components damaged by use or modification or as result of wear.  
Part or parts missing from this kit must be reported within 30 days of purchase.  
No part or parts will be sent under warranty without proof of purchase.  
If you find a defective or missing part, contact the local distributor.  
Customer service and support will be provided through local hobby store.  
No warranties are expressed or implied that cover damage caused by what is considered normal use or cover or imply how long any model cars' components or electric components will last before requiring replacement.  
Due to the high performance level of this model car you will need to periodically maintain and replace consumable components; any and all warranty coverage will not cover replacement of any part or component damaged by neglect, abuse or improper or unreasonable use.  
This includes but is not limited to damage from crashing, excessive moisture, improper use or no maintenance or user modifications which compromise the integrity of components.  
Warranty will not cover components that are considered consumable on RC model car.  
WIRC doesn't pay nor refund on any component sent from WIRC or its distributor for warranty.  
WIRC reserves the right to make final determination of the warranty status of any component or part  
Use only original WIRC spare parts.

## CUSTOMER SUPPORT

Please don't hesitate to contact WIRC support at [info@wircracing.com](mailto:info@wircracing.com) for any problem or question.  
Also kindly visit our website [www.wircracing.com](http://www.wircracing.com) to find last updates, set-up information, option parts and other information.

### World racing car s.r.l.

Via A.Volta, 2 Bis  
36040 Brendola (VI)  
**ITALY**

Phone: +39 0444 1792263  
E-mail: [info@wircracing.com](mailto:info@wircracing.com)  
Website: [www.wircracing.com](http://www.wircracing.com)



# GT X EP

## TECHNICAL INFORMATION

- BODY: PROTOTYPE MODEL (NOT INCLUDED)
- ADJUSTABLE FRONT TOE, CAMBER AND CASTER
- ADJUSTABLE REAR TOE AND CAMBER
- BUMPER /FRONT BACKSTOP
- ALUMINIUM CHASSIS
- FULL BALL BEARING
- CARBON RADIO PLATE
- TRANSMISSION: TRIPLE BELT 4WD
- FRONT DIFFERENTIAL: ONE-WAY
- REAR DIFFERENTIAL: SOLID AXLE
- FRONT AND REAR ADJUSTABLE ANTI-ROLL BARS
- PIVOT BALL SUSPENSIONS

## TECHNICAL DATA

- LENGHT .....435 MM.
- WIDTH .....260 MM.
- WHEEL BASE .....adjustable 294-298 MM.
- WEIGHT CHASSIS.....1120 GR.

### ADDITIONAL ITEMS NEEDED FOR COMPLETION (REQUIRED BUT NOT INCLUDED IN THE KIT)



ENGINE AND MUFFLER



TRANSMITTER



RECEIVER



LOW PROFILE STEERING SERVO



BATTERIES FOR TRANSMITTER AND RECEIVER



WHEEL - TYRES - INSERTS



2 X 7.4 V  
LIPO BATTERIES



LEXAN BODY

## TOOLS REQUIRED

THESE TOOLS ARE NOT INCLUDED IN THE KIT BUT ARE REQUIRED FOR PROPER ASSEMBLY



ALLENS:  
1.5 mm  
2 mm  
2.5 mm  
3 mm



SOCKET  
5mm



SIDE CUTTERS



COMBINATION PLIERS



TOOL FOR  
TURNBUCKLES/NUTS



WHEEL NUT TOOL  
17mm



GREASE

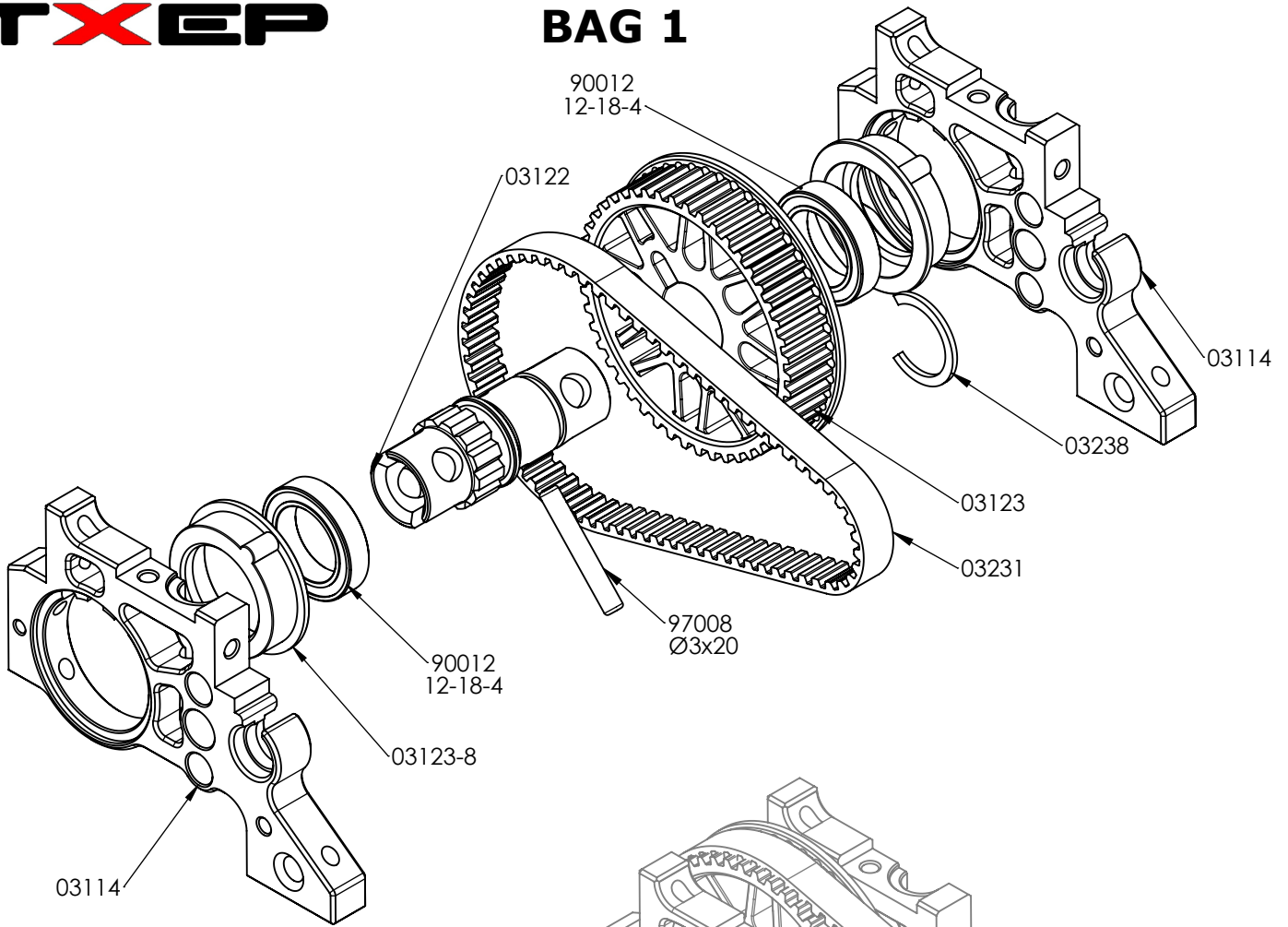


OILS:  
5000 CST  
BEARING OIL

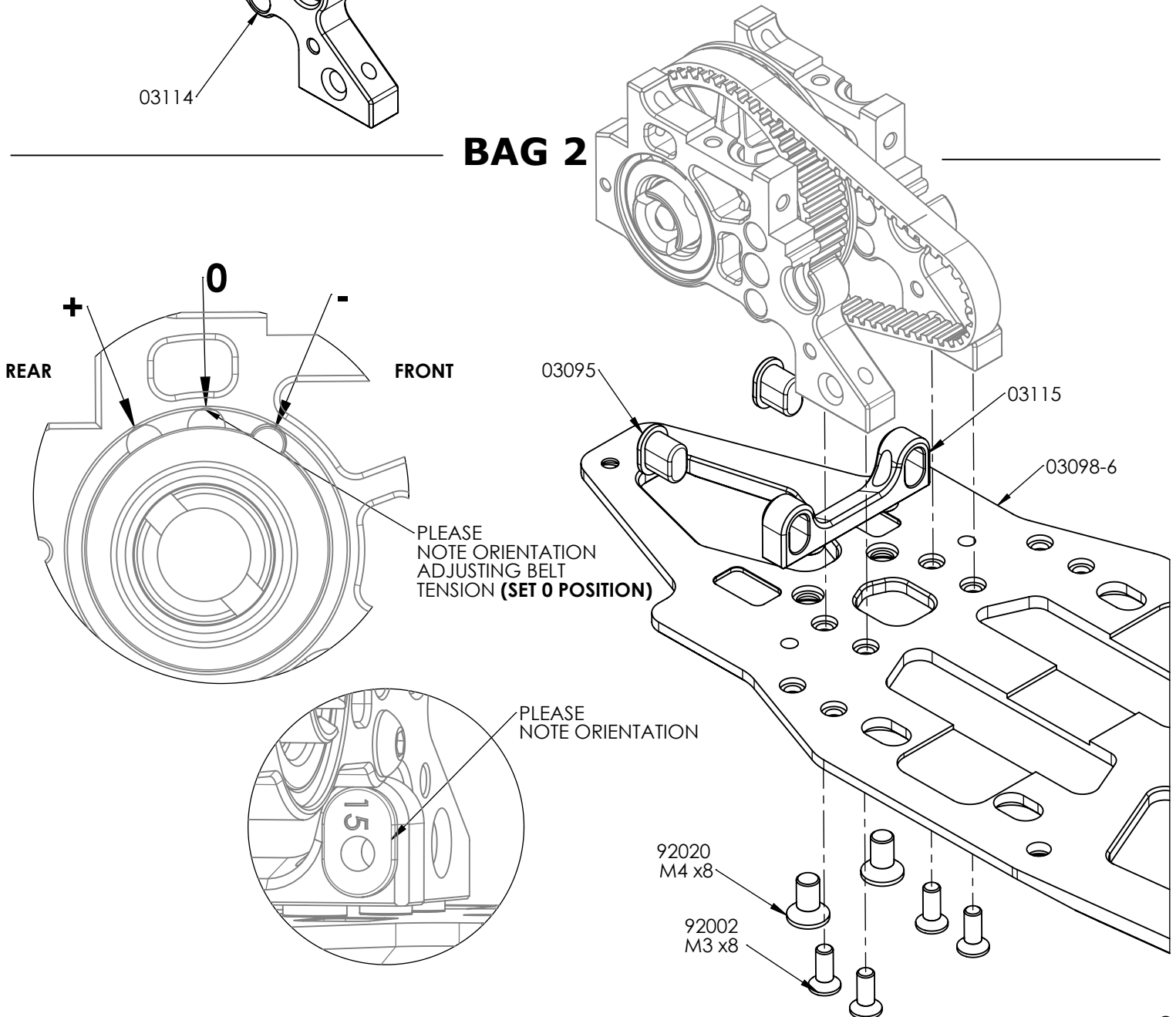
## NOTICE:

THE FOLLOWING ITEMS ARE NEEDED FOR COMPLETION OF THE GT X EP; THEY ARE NOT INCLUDED IN THIS KIT (UNLESS NOTED) AND SHOULD BE OBTAINED FROM YOUR LOCAL HOBBY SHOP.  
BE SURE TO READ THE INSTRUCTION COMPLETELY PRIOR TO ASSEMBLY

## BAG 1

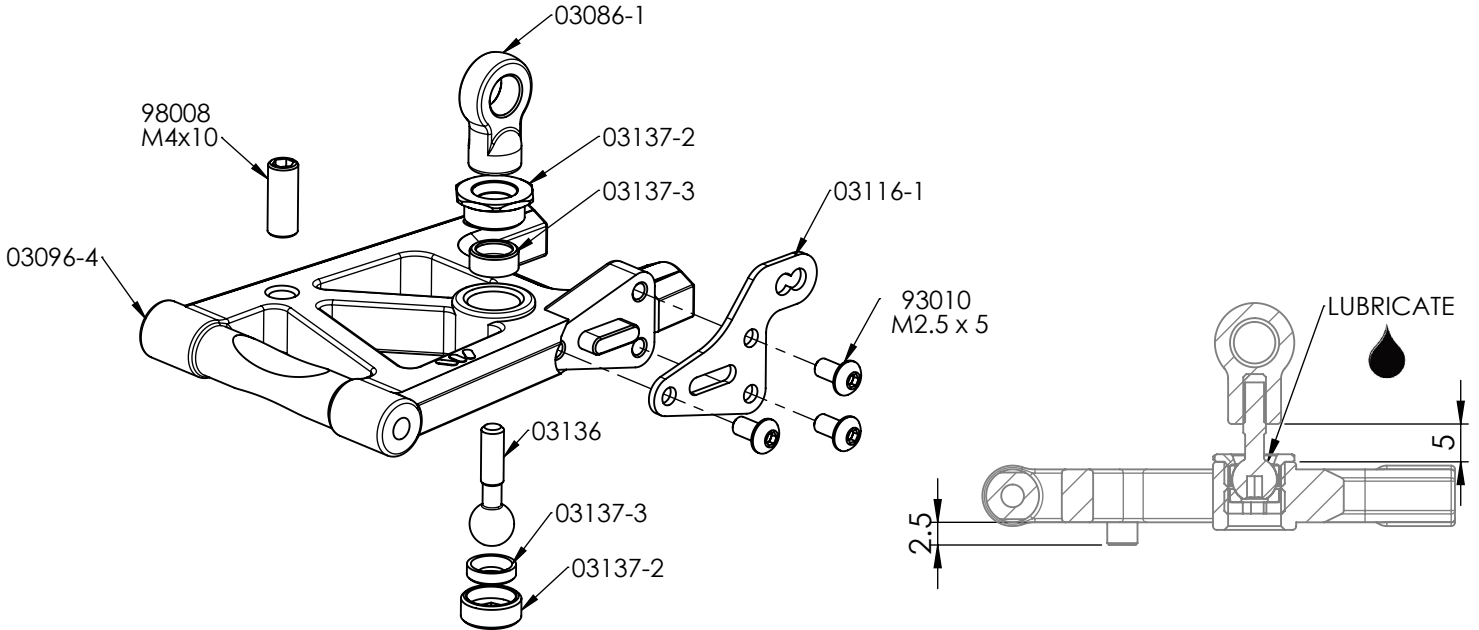


## BAG 2

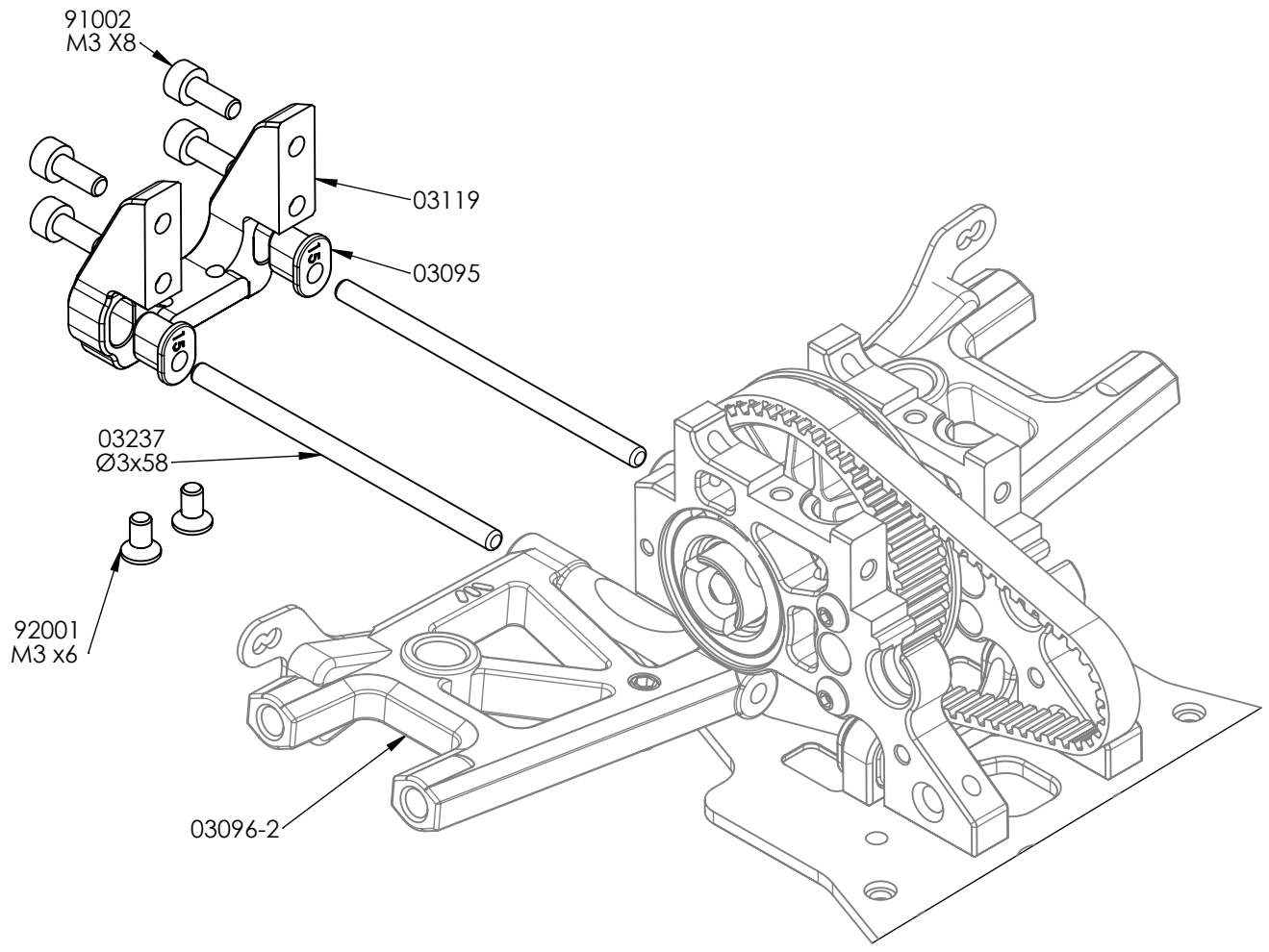




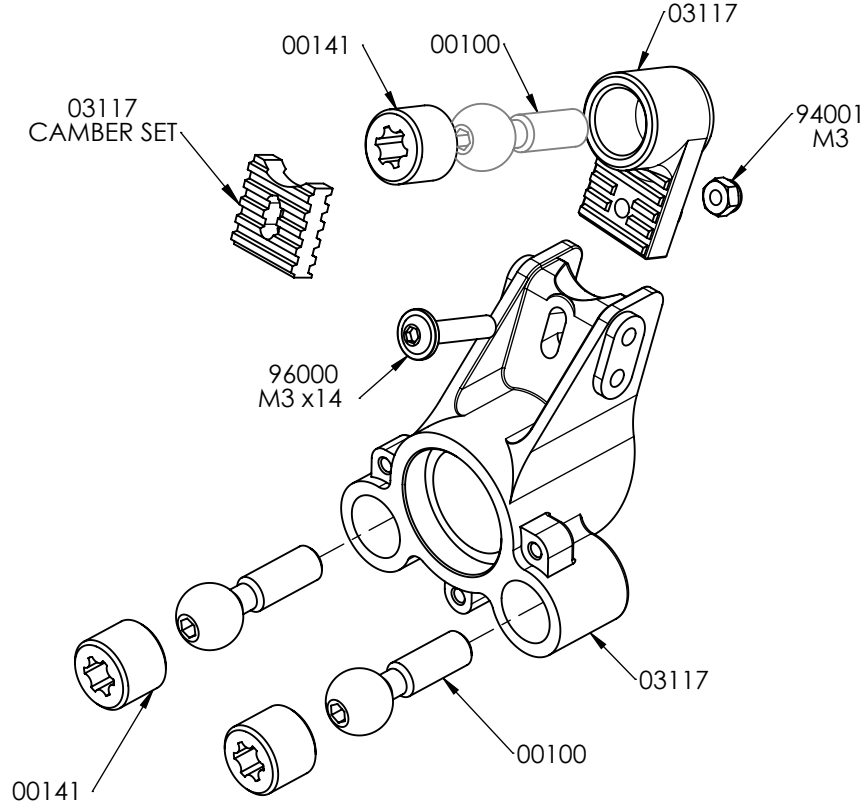
## BAG 2



**x2**

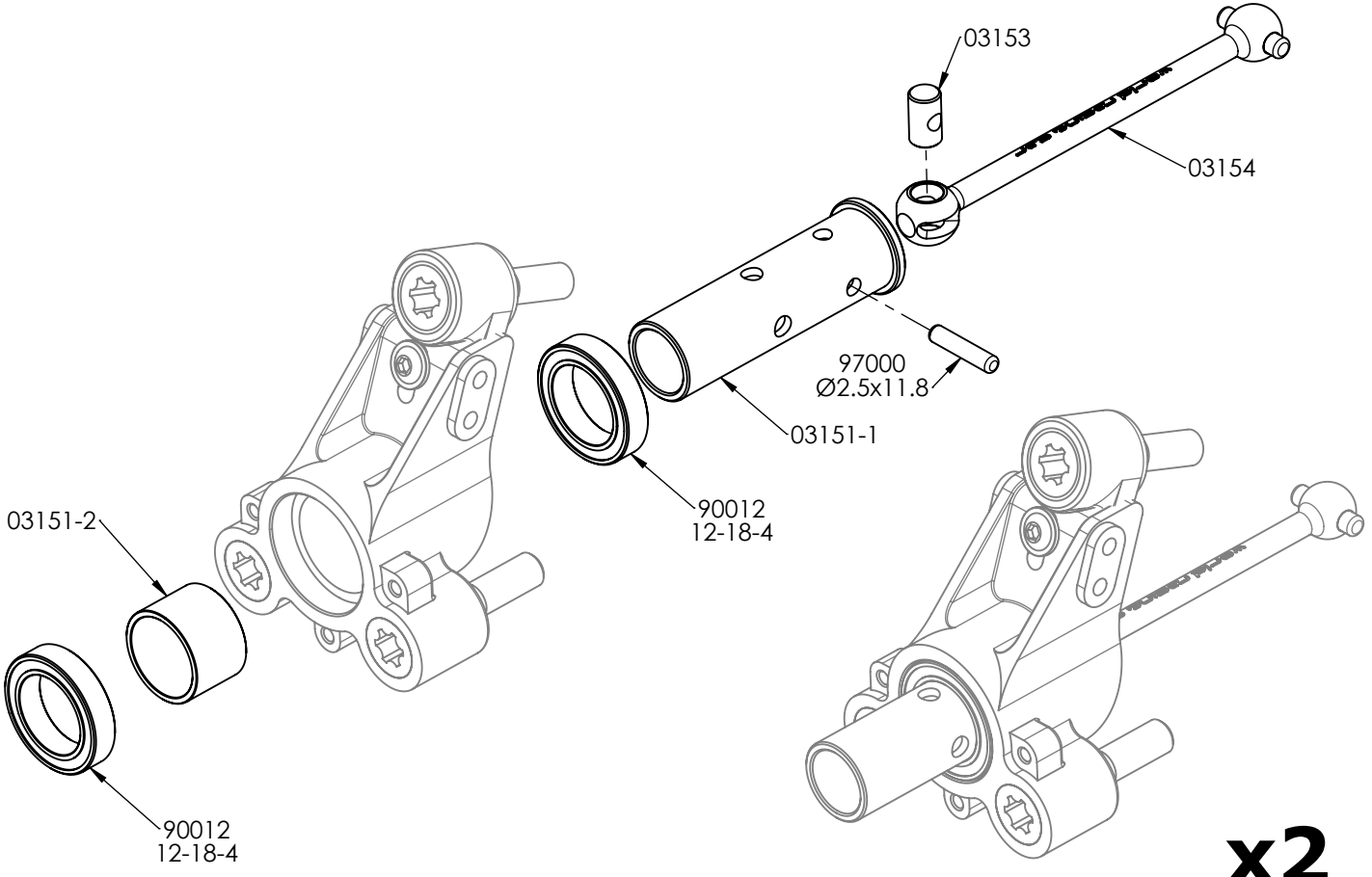


## BAG 3



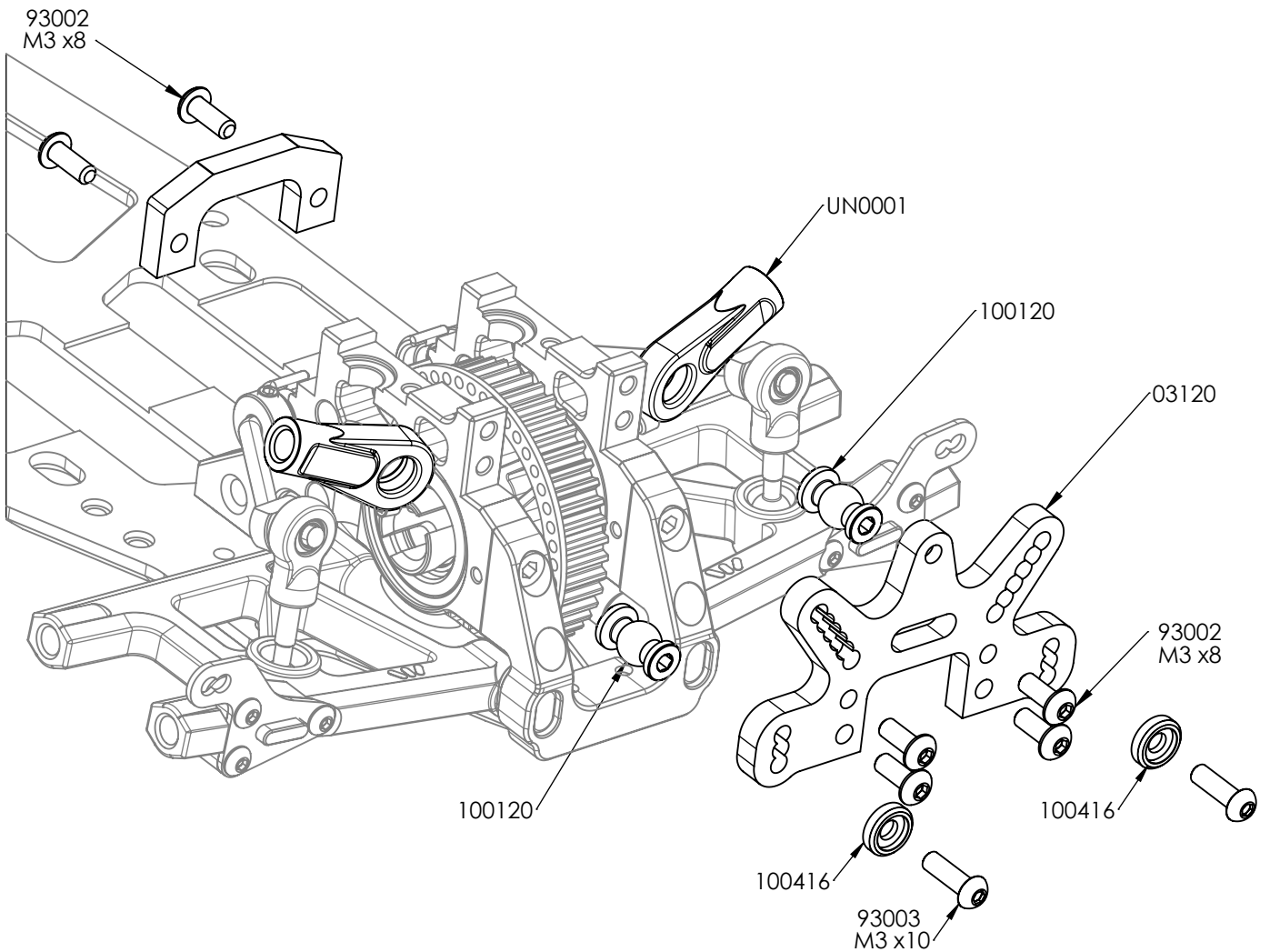
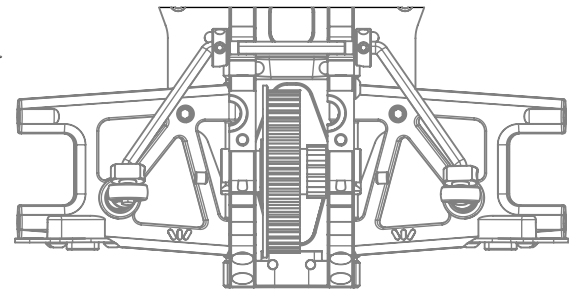
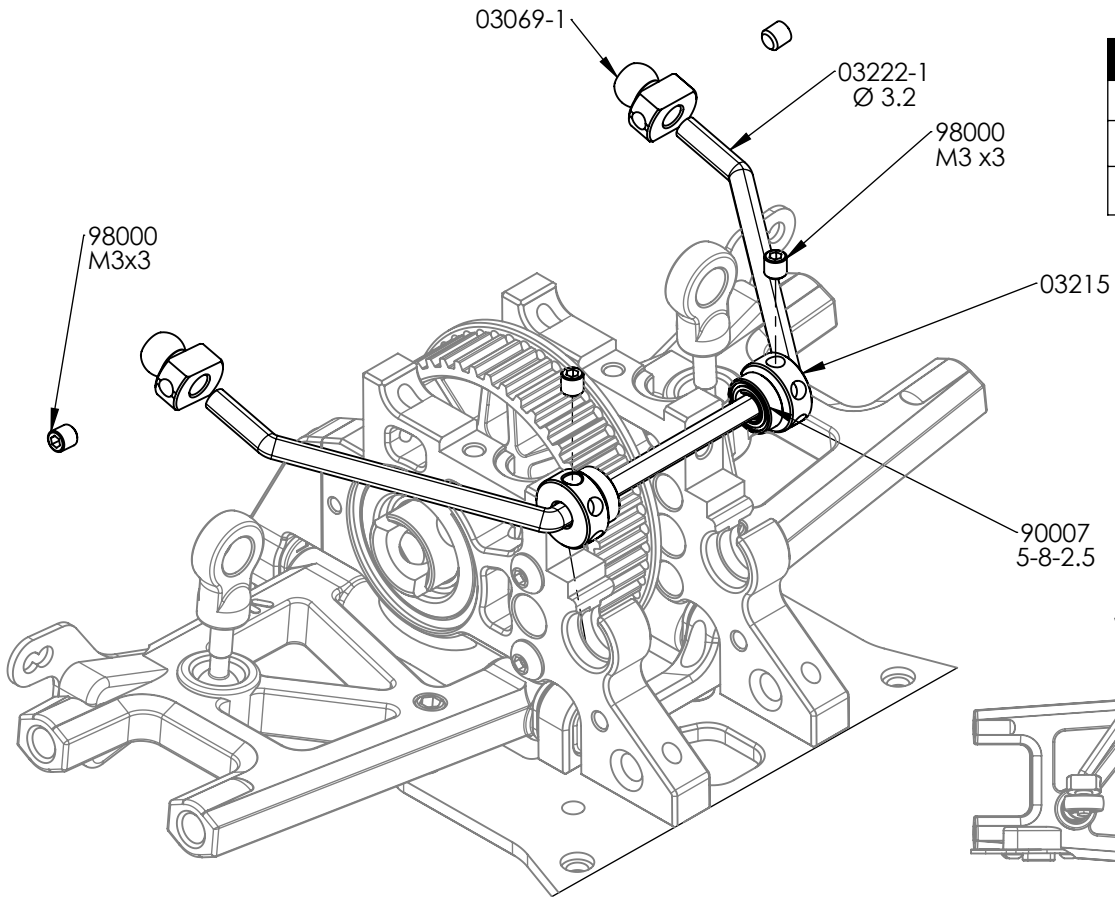
**x2**

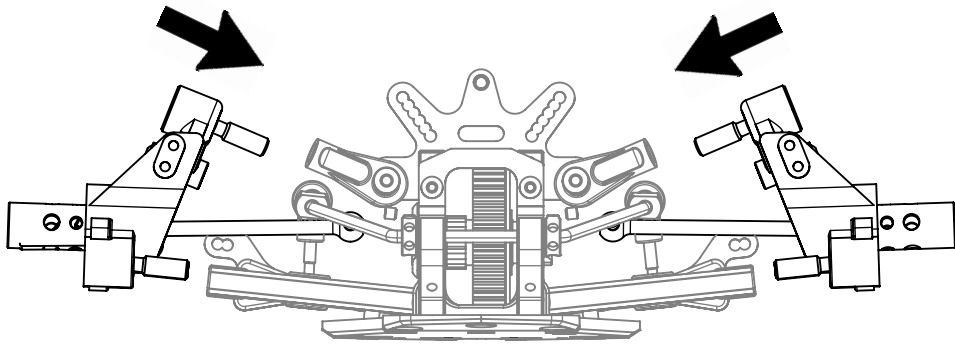
## BAG 4



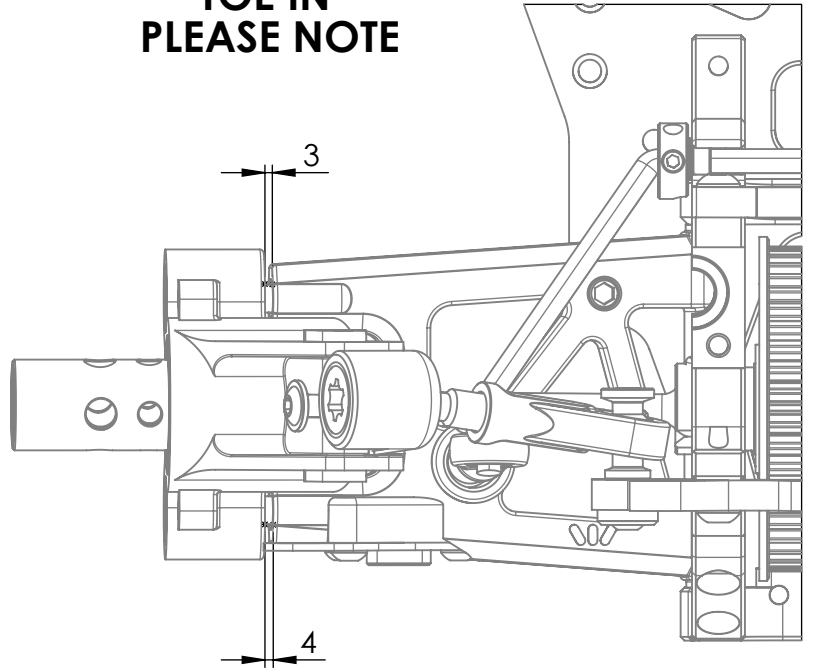
**x2**

ANTI ROLL BAR		
COD		
03222-3.0	Ø 3	OPTIONAL
03222-3.2	Ø 3.2	STANDARD

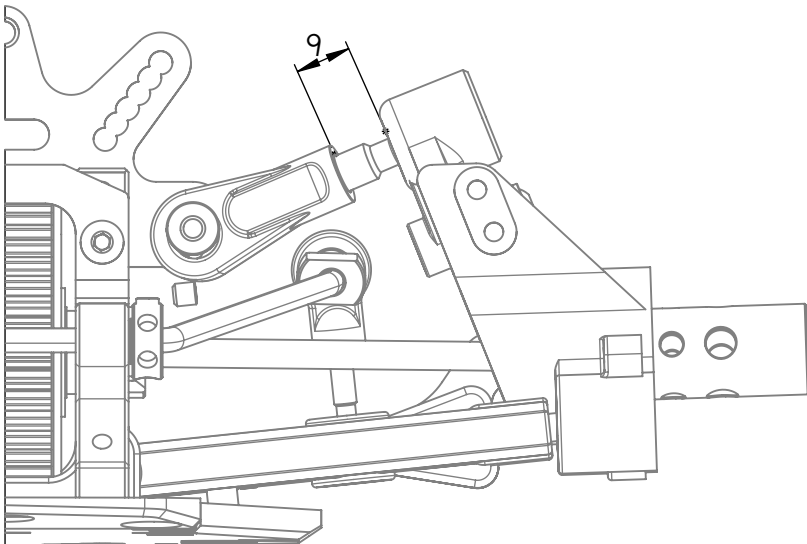




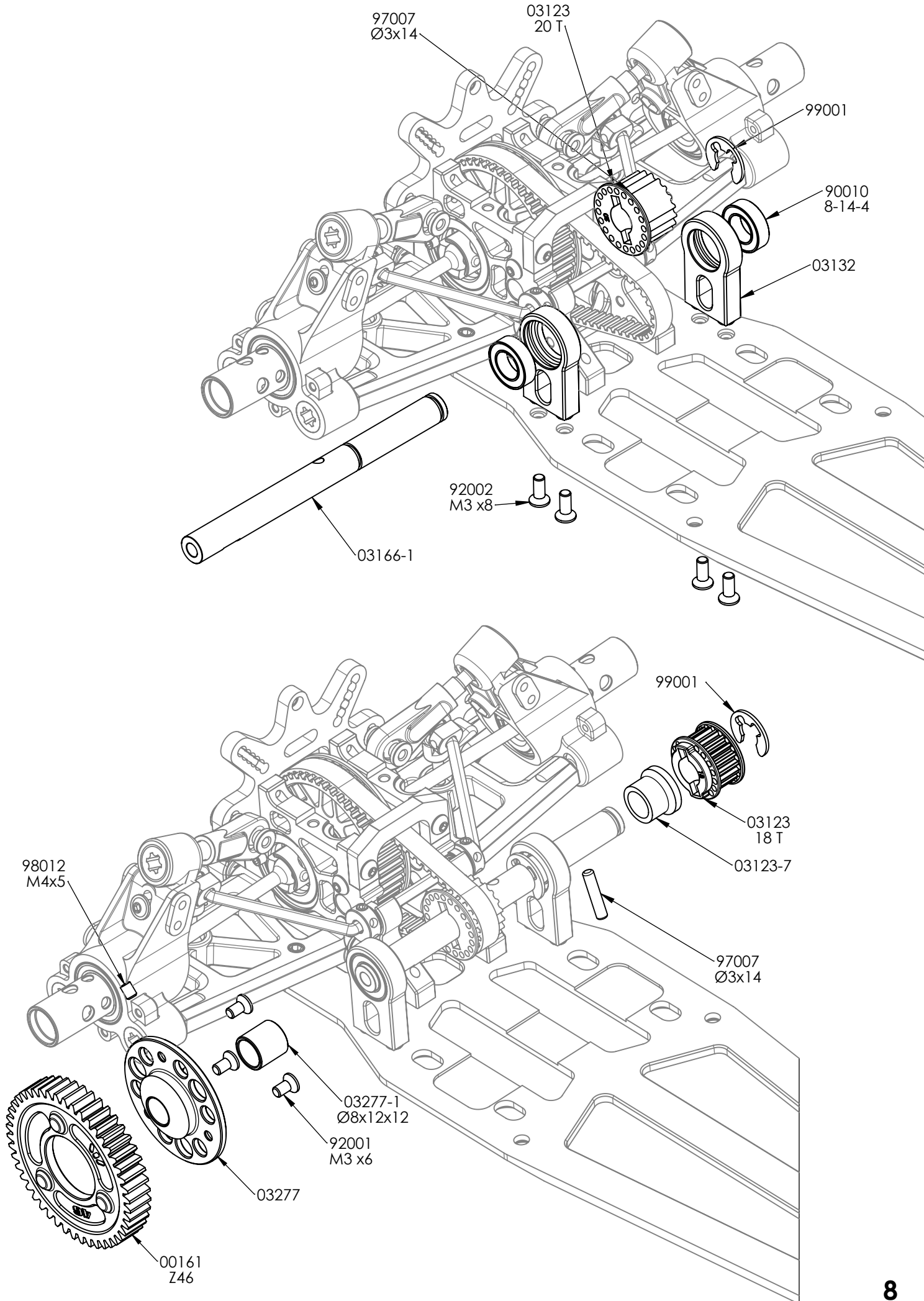
**TOE IN  
PLEASE NOTE**



**SET  
REAR CAMBER**

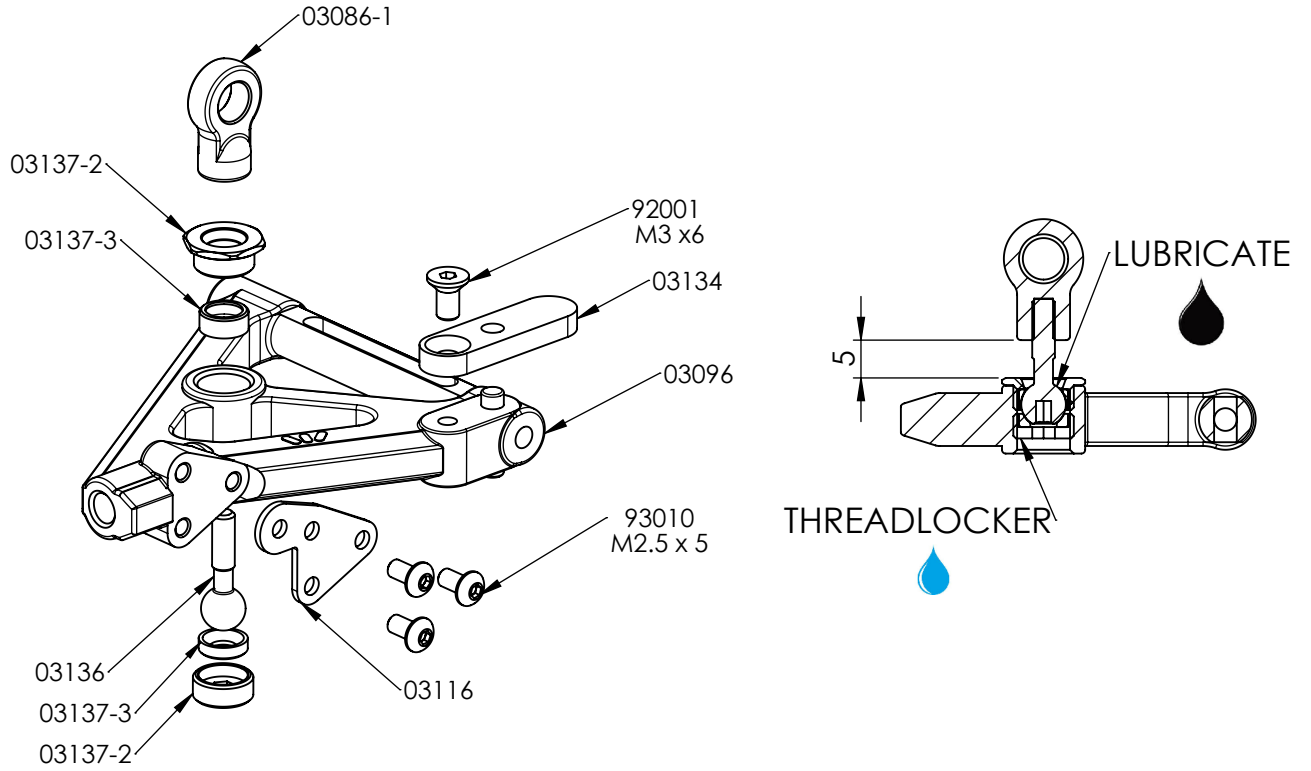


## BAG 5

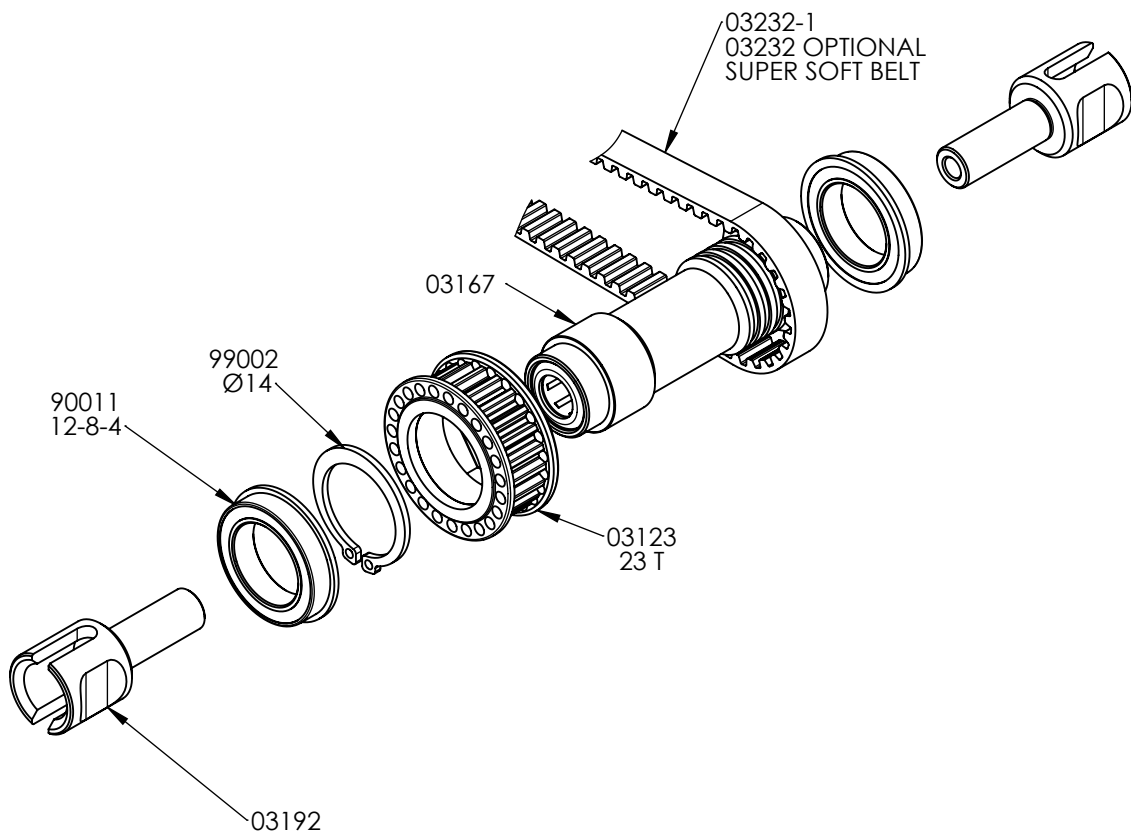




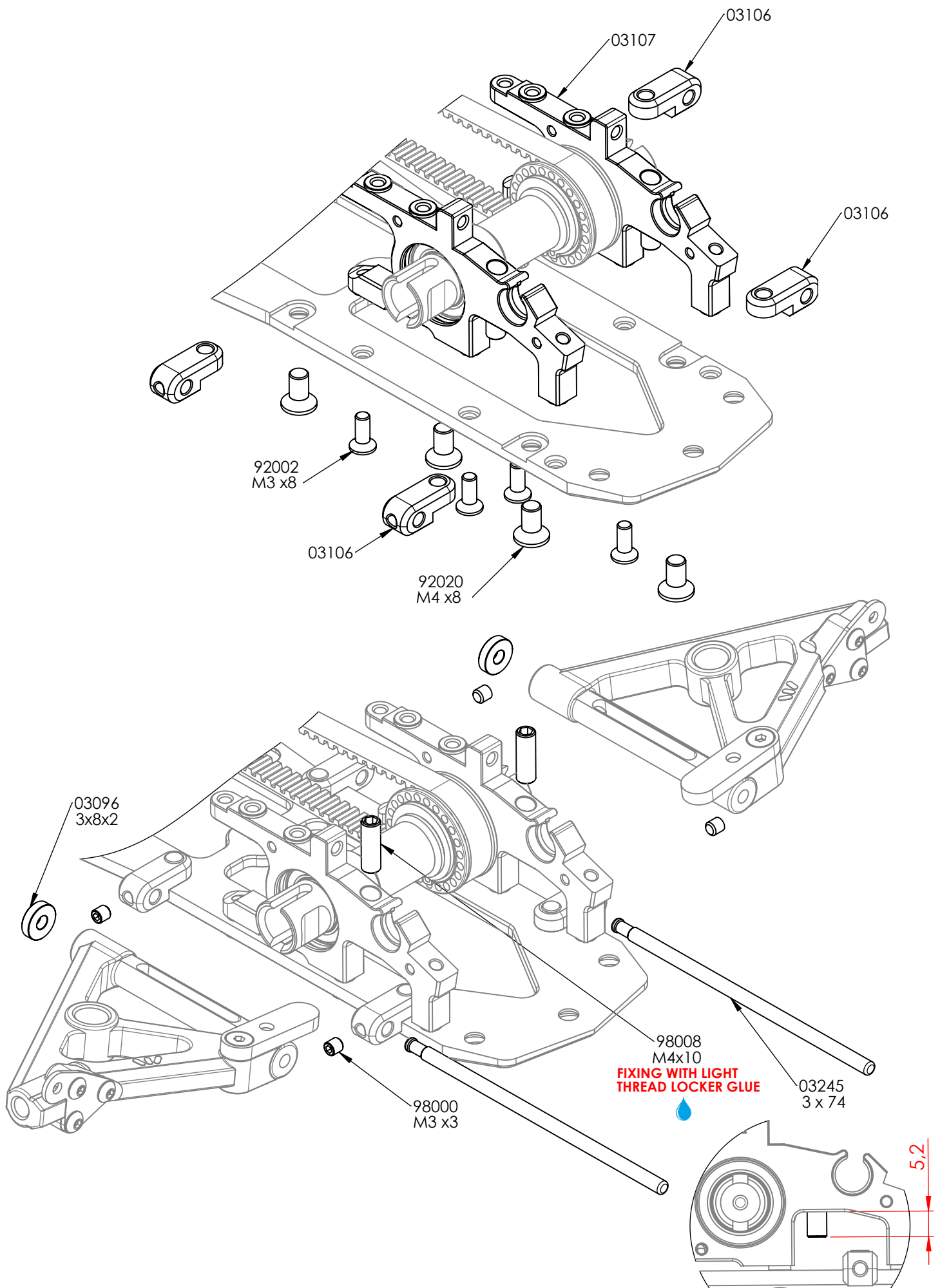
## BAG 6



**x2**

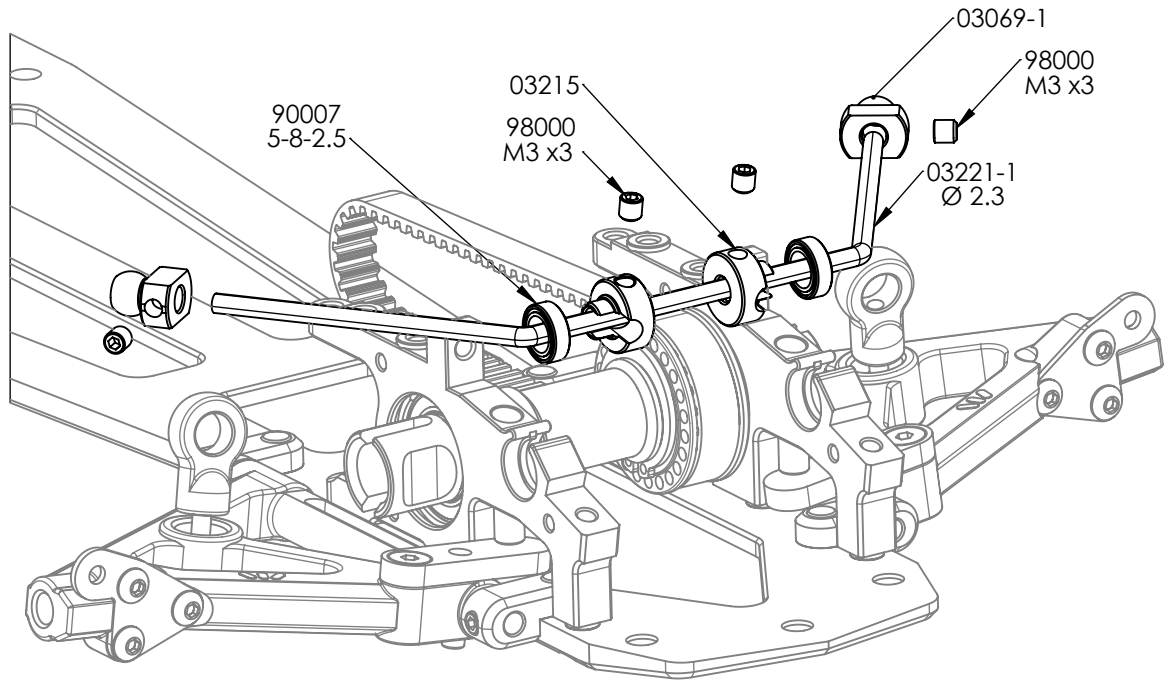


## BAG 6

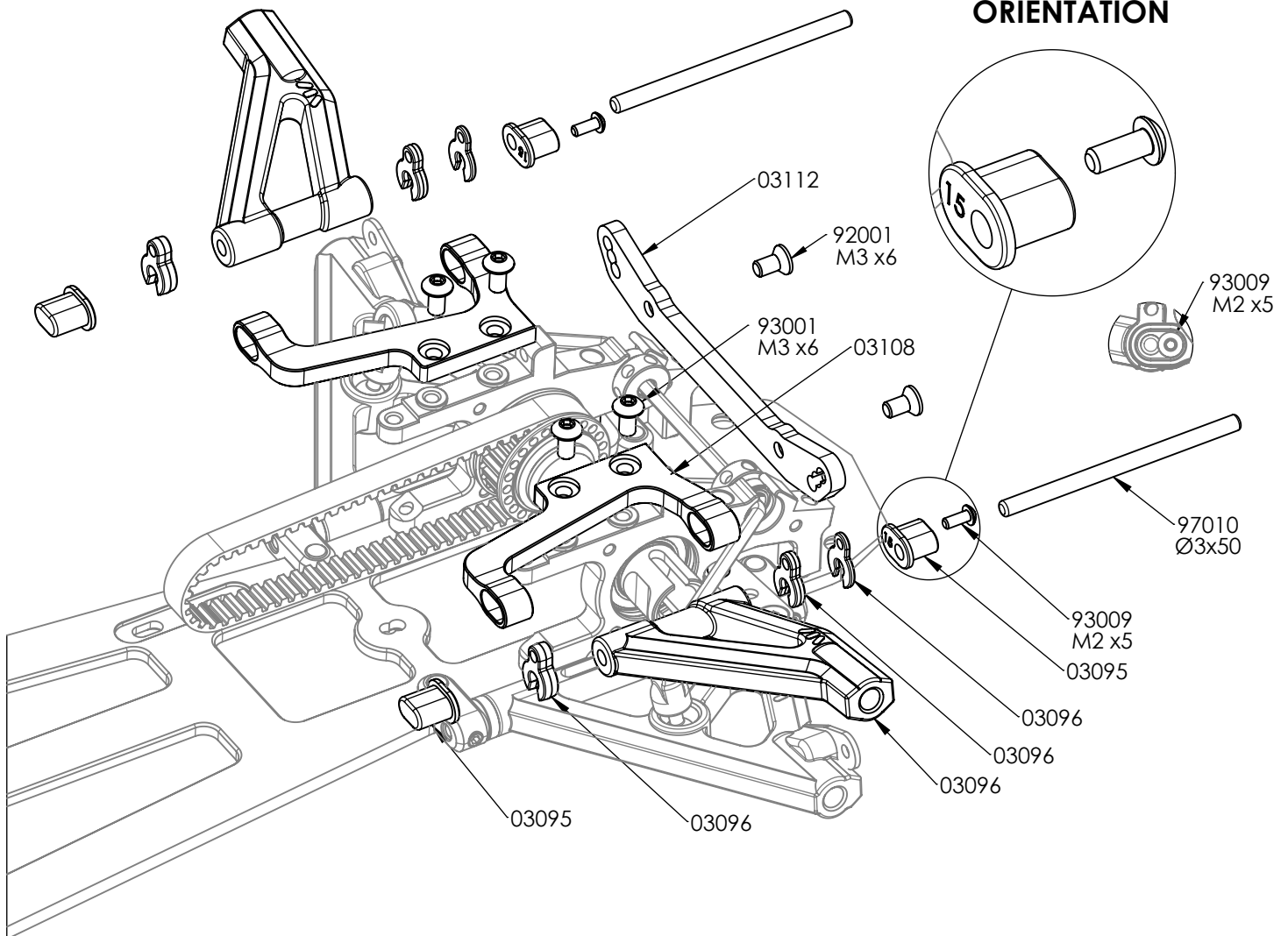


## BAG 7

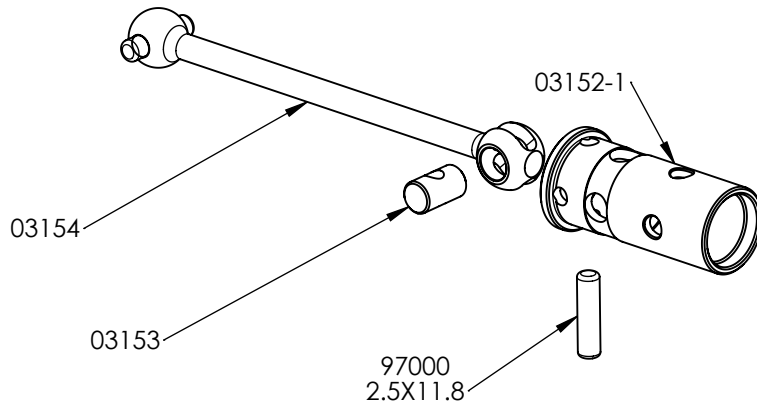
ANTI ROLL BAR		
COD		
03221-2.2	Ø 2.2	OPTIONAL
03221-2.3	Ø 2.3	STANDARD
03221-2.4	Ø 2.4	OPTIONAL



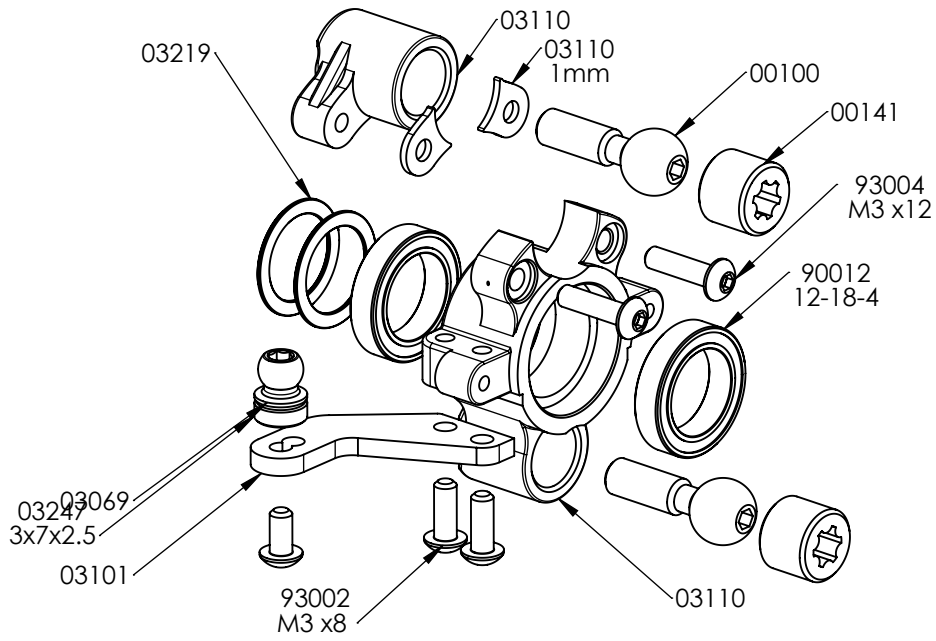
**PLEASE NOTE  
ORIENTATION**



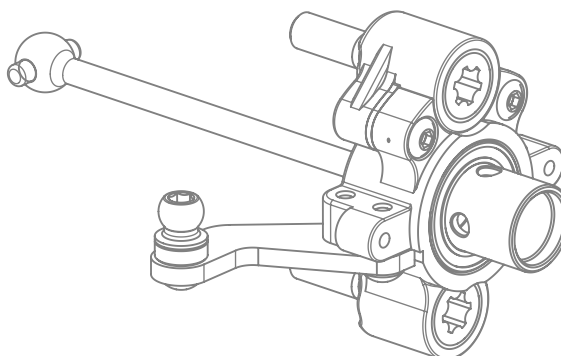
## BAG 8



**x2**



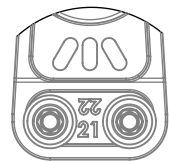
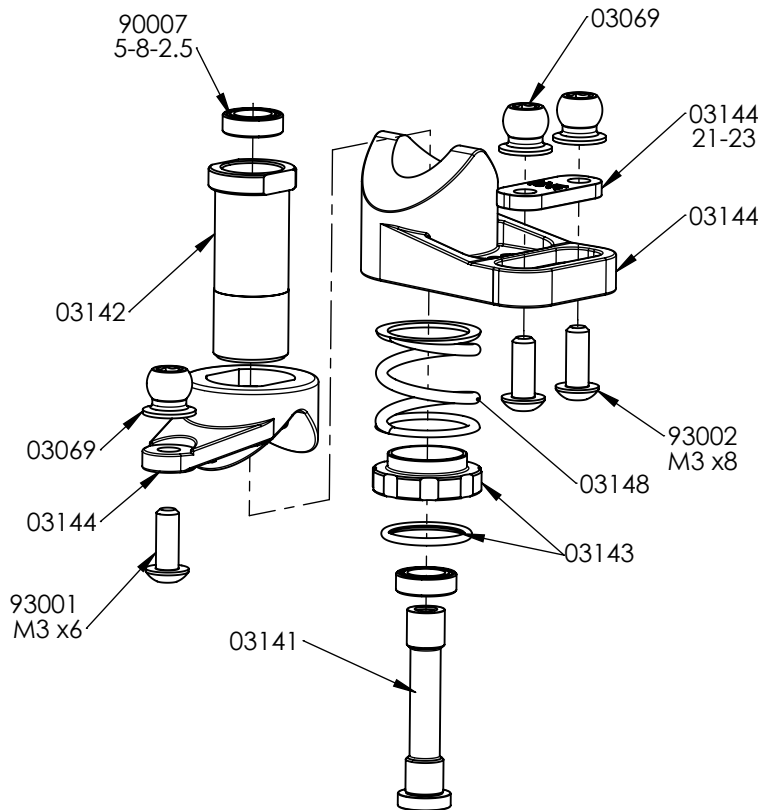
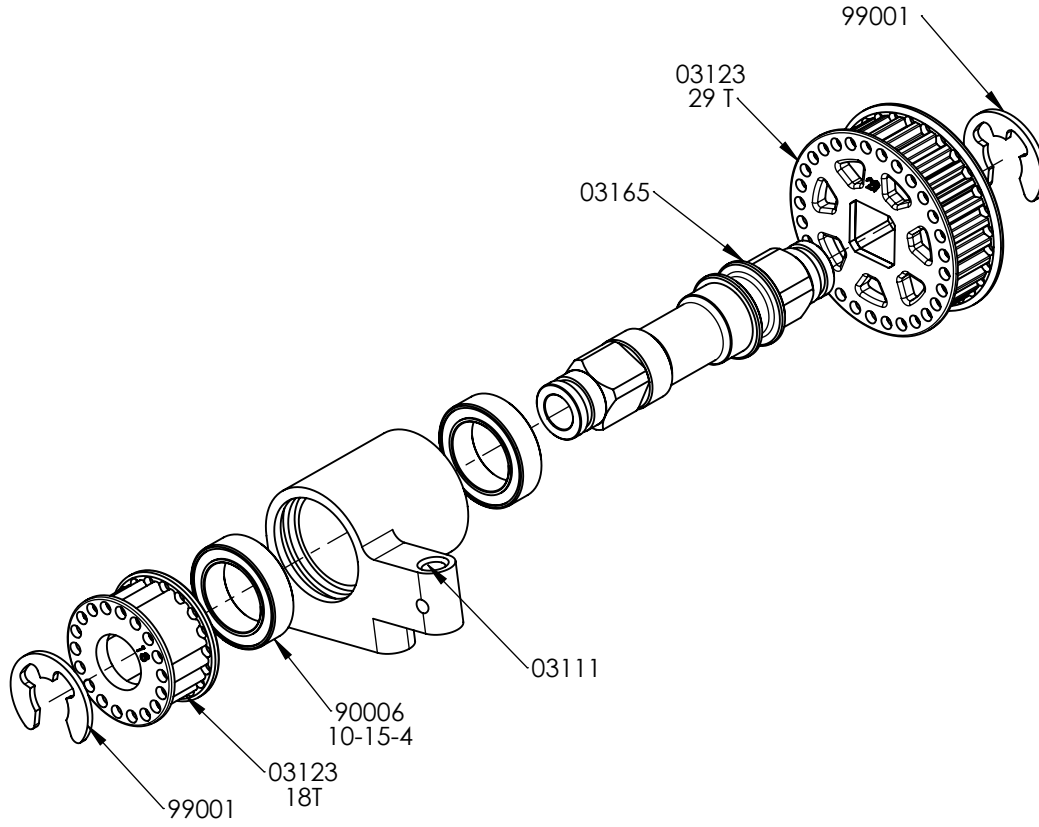
**x2**





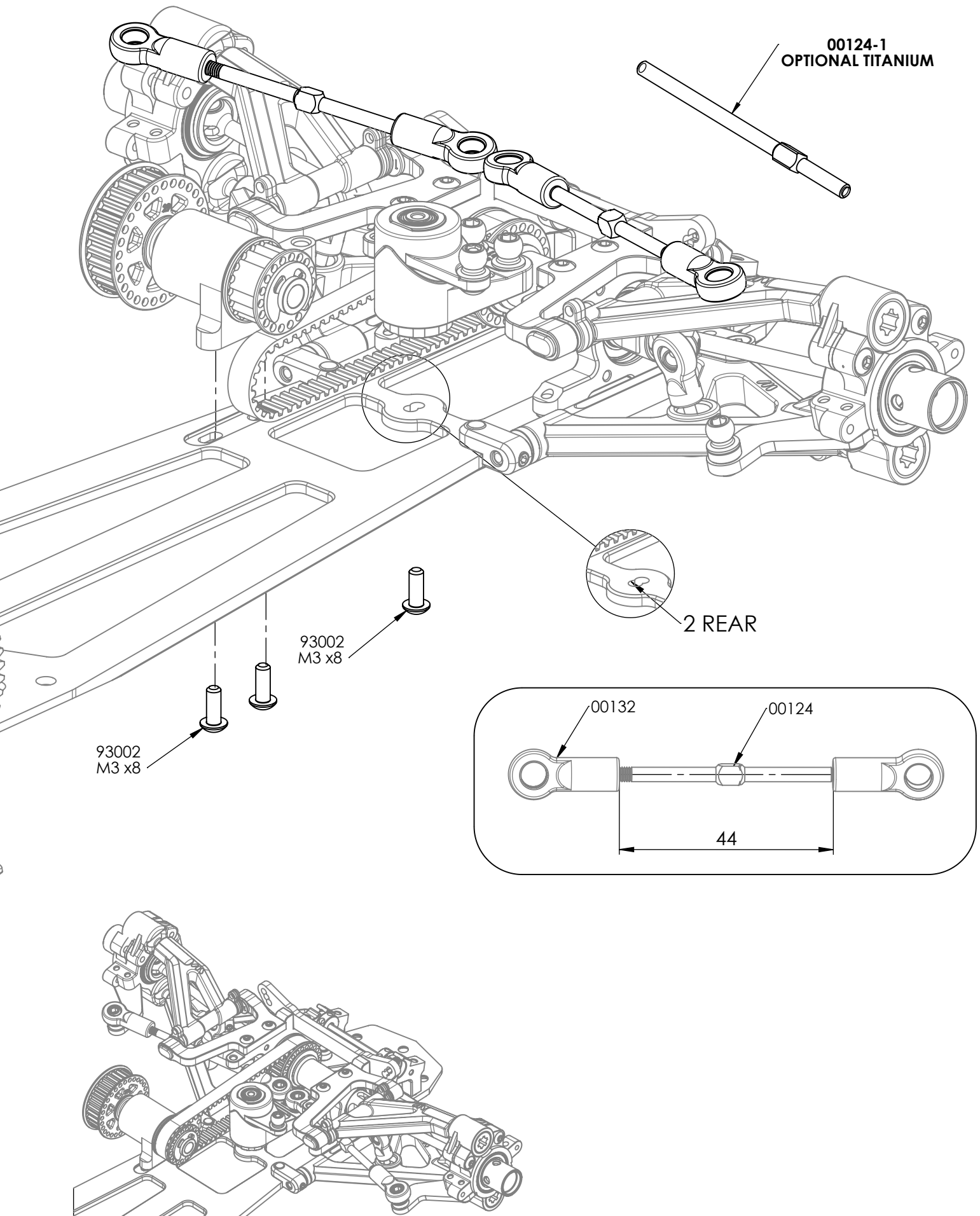


## BAG 9

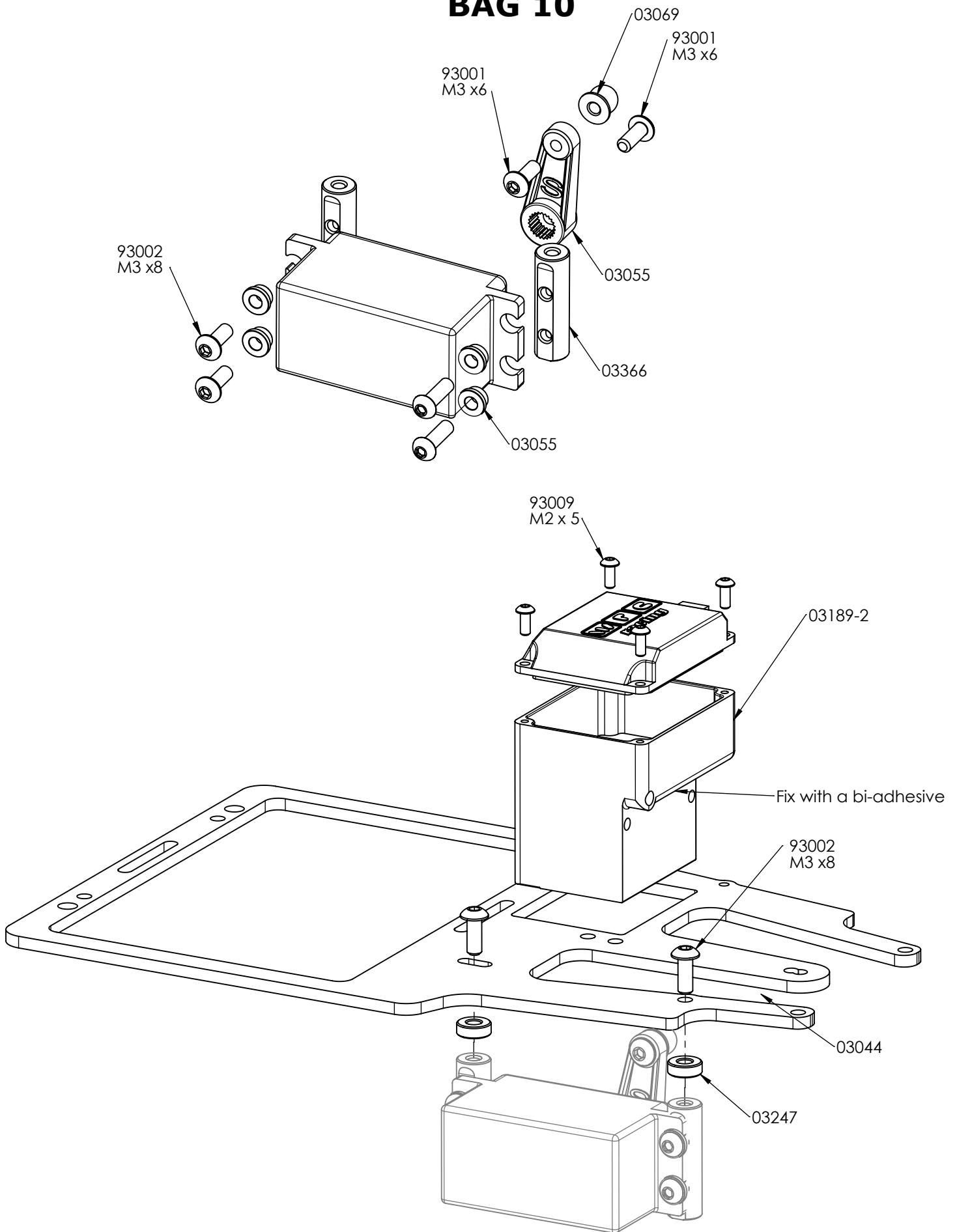


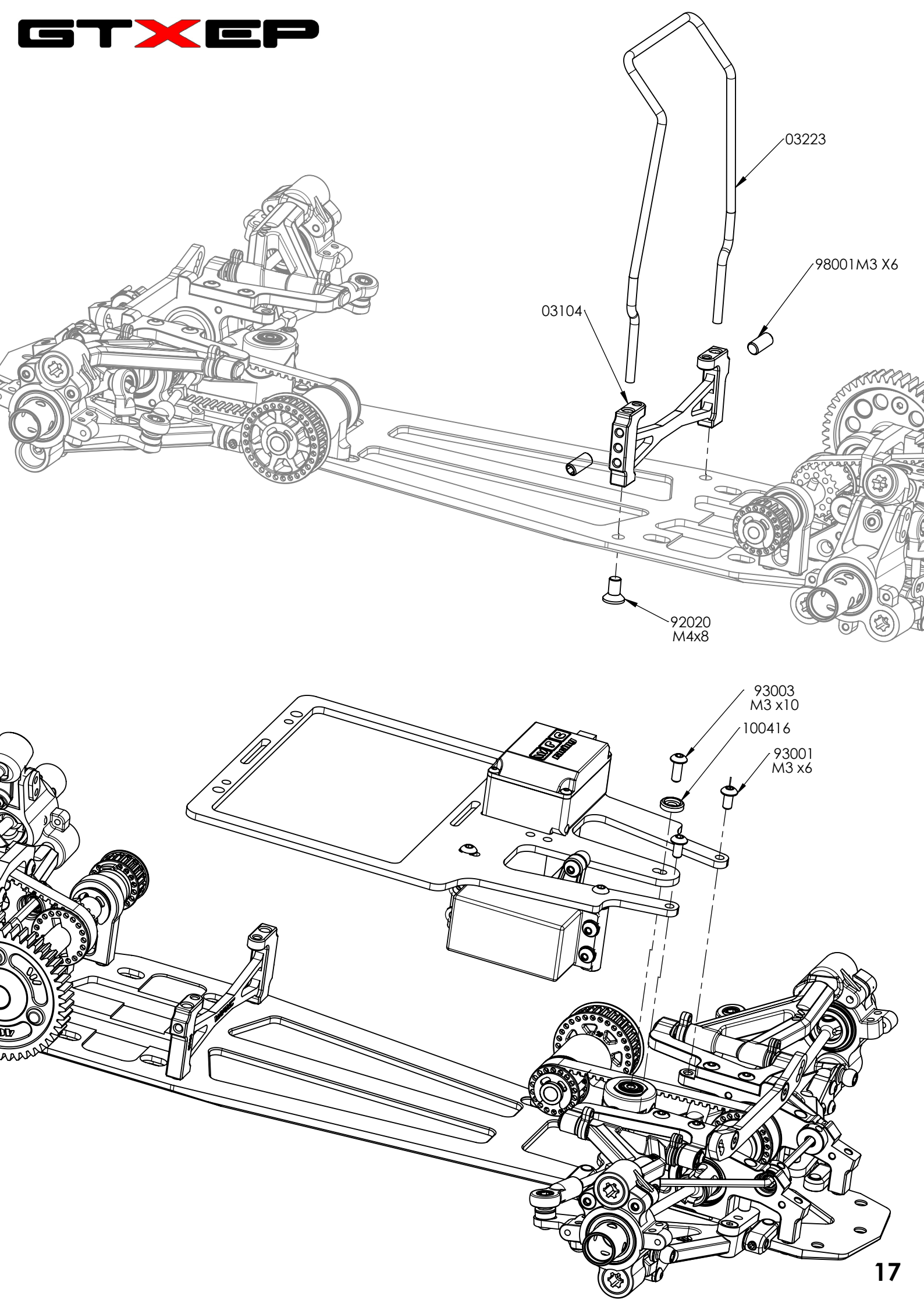
PLEASE NOTE  
ORIENTATION

## BAG 9

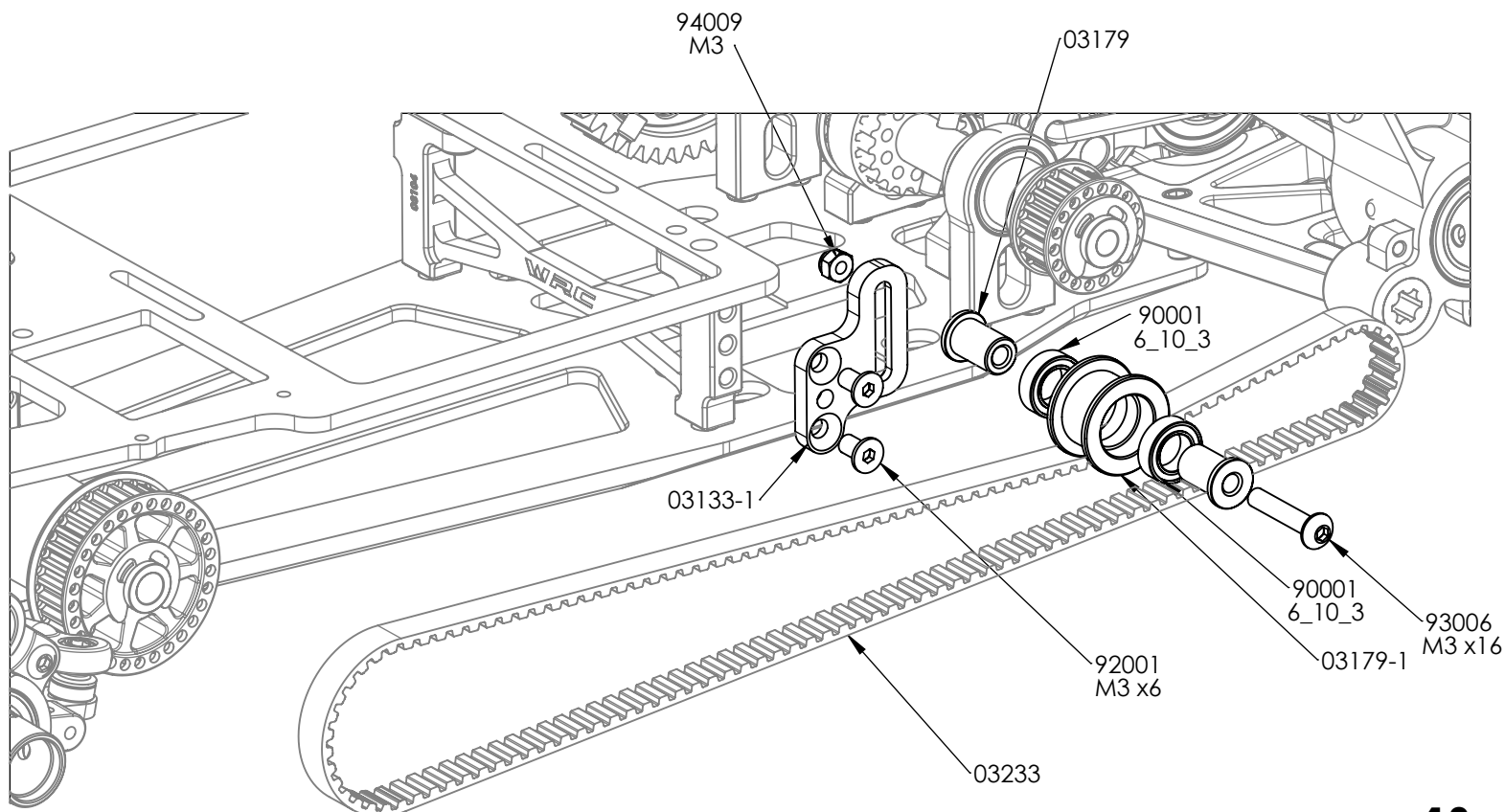
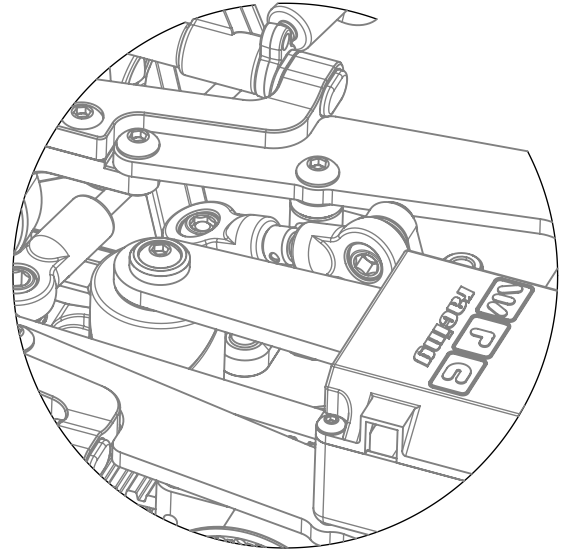
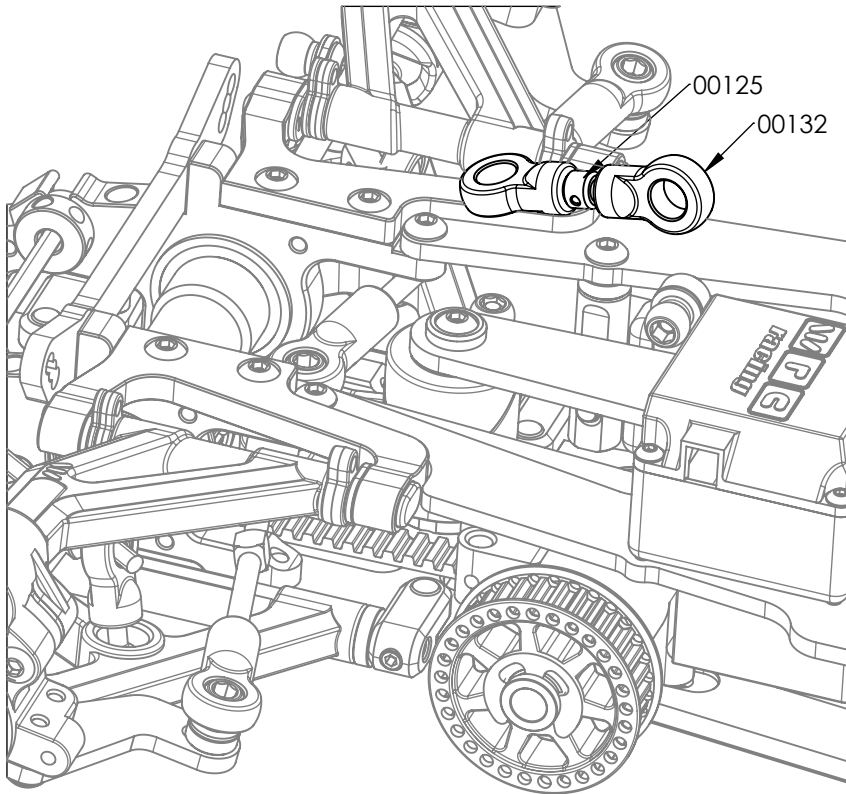
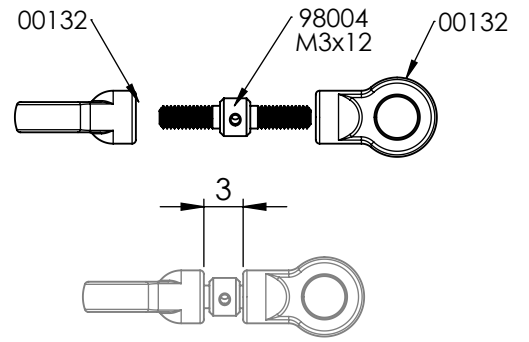


## BAG 10





## BAG 11

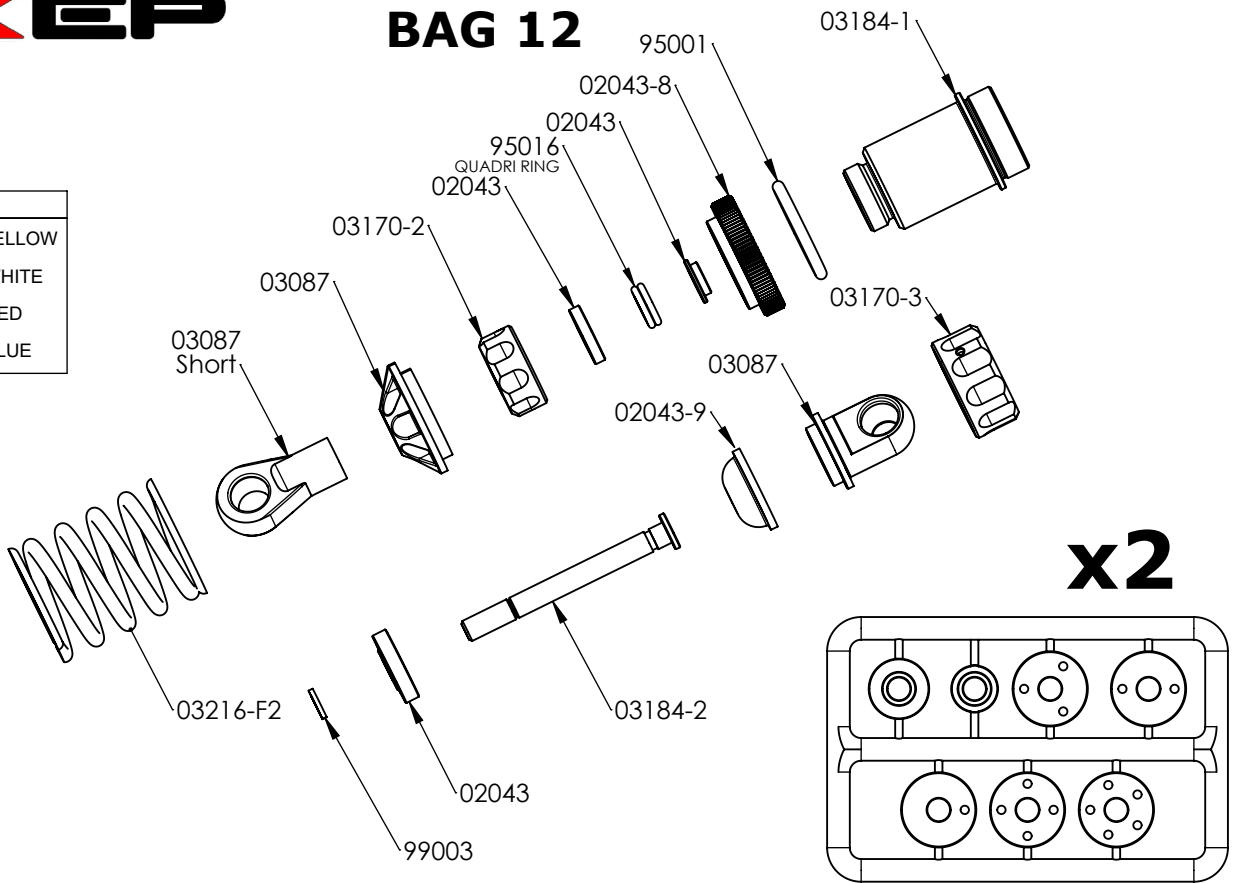




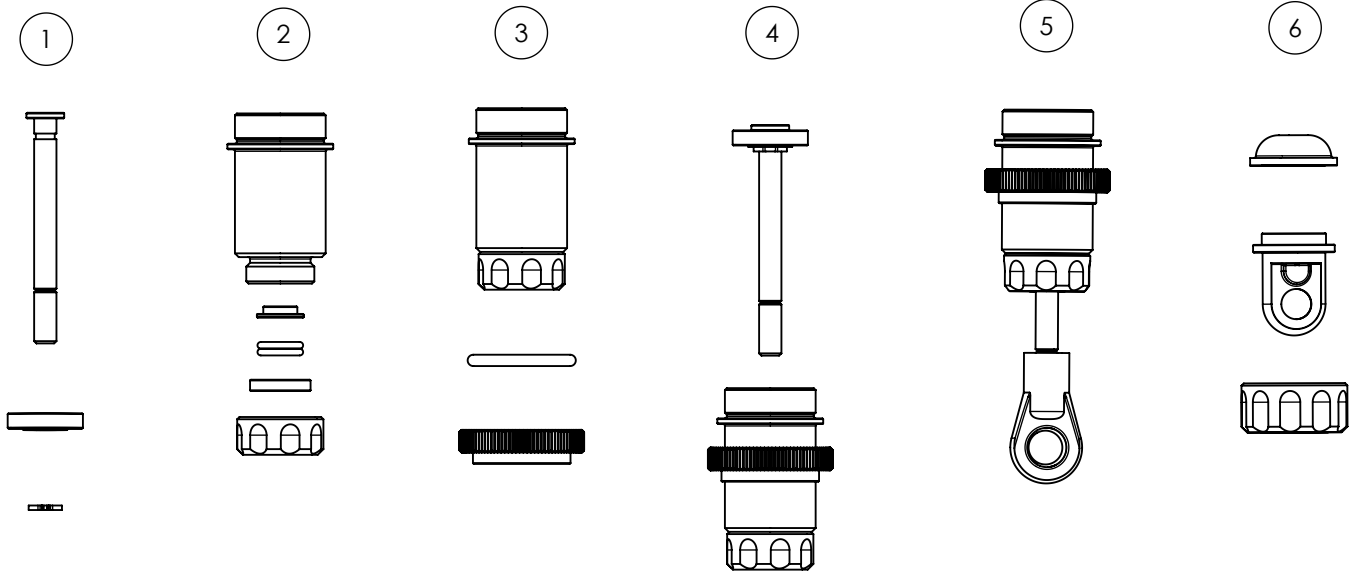
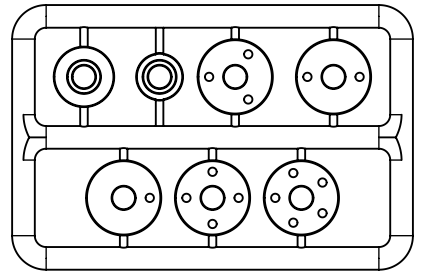
### FRONT

#### SPRINGS

03216-F1	SOFT	YELLOW
03216-F2	MEDIUM (IN KIT)	WHITE
03216-F3	HARD	RED
03216-F4	PROGRESSIVE	BLUE



x2



#### SHOCK FILLING

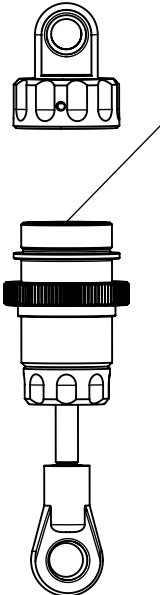
Fully extend the piston rod so the piston is at the bottom of the shock body.

Hold the shock upright and fill the shock body with shock oil as in the picture.

Let the oil settle and allow air bubbles to rise to the top. Slowly move the piston up and down until no more air bubbles appear. Add shock oil as necessary.

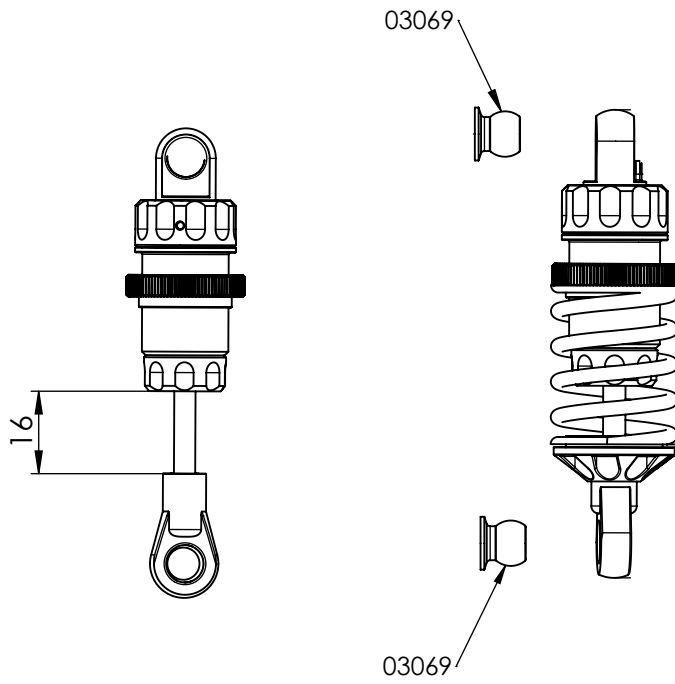
Pull the piston rod most of the way out of the shock bod. Let the shock rest for 5 minutes to allow the air bubbles to scape.

P- ONE SHOCKS OIL	
CODE	CST
RC0029	400
RC0062	500
RC0030	600 (IN KIT)
RC0063	700
RC0031	800

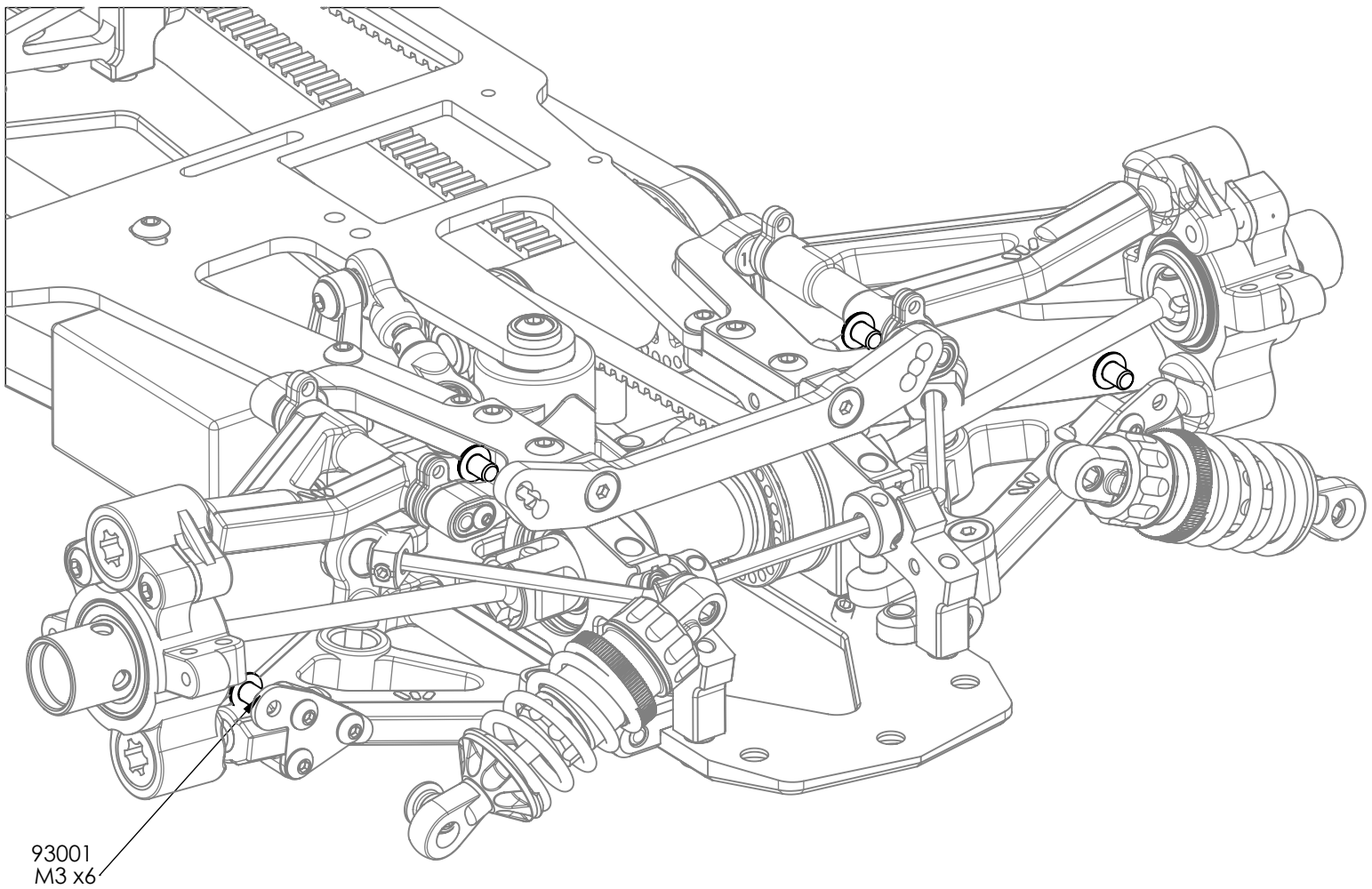


## BAG 12

### FRONT



**x2**

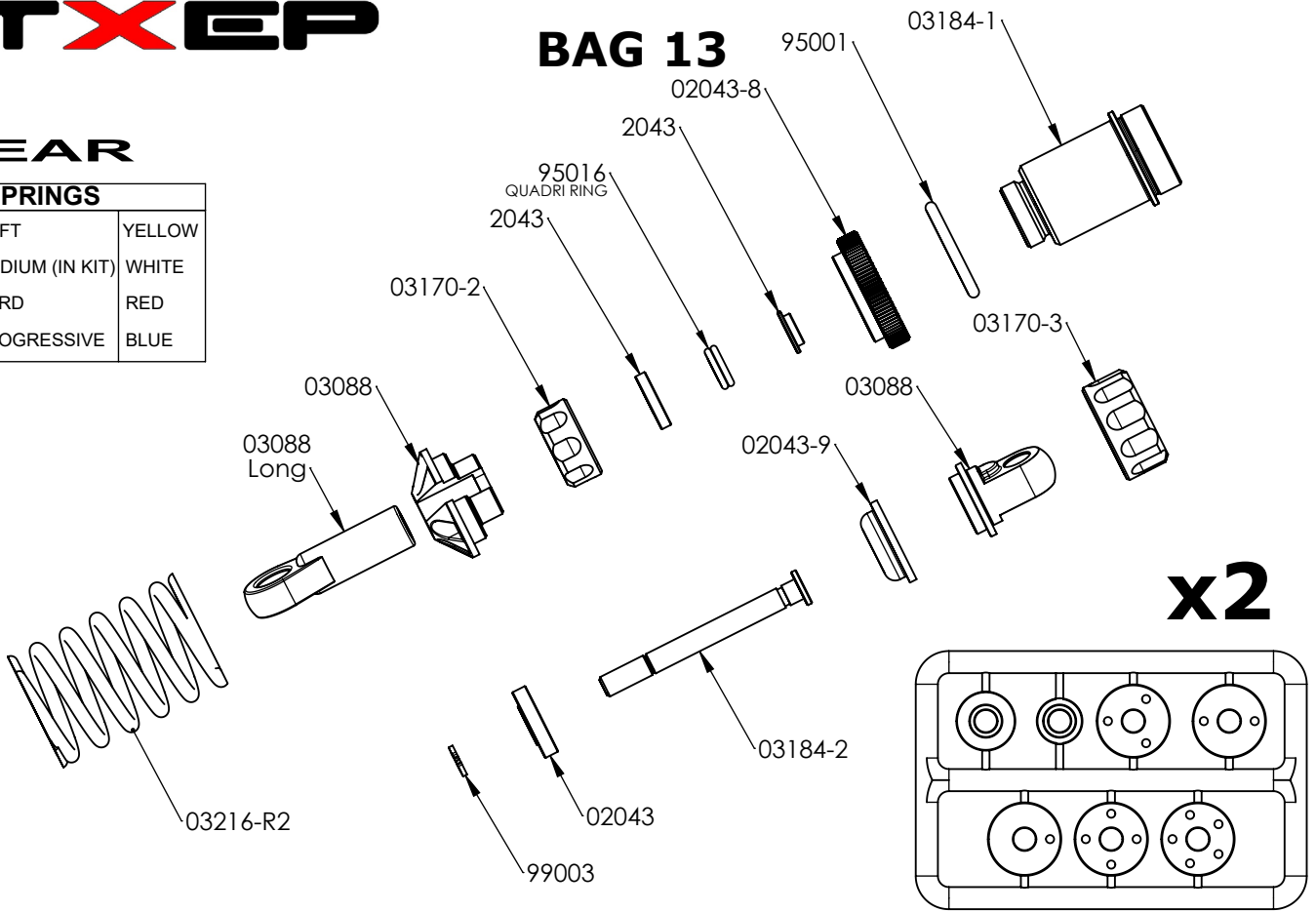


## BAG 13

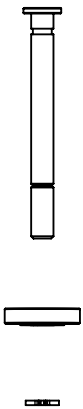
### REAR

#### SPRINGS

03216-R1	SOFT	YELLOW
03216-R2	MEDIUM (IN KIT)	WHITE
03216-R3	HARD	RED
03216-R4	PROGRESSIVE	BLUE



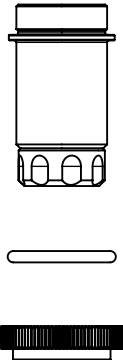
1



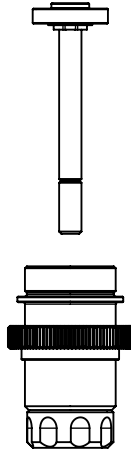
2



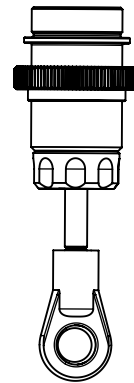
3



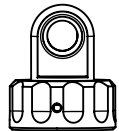
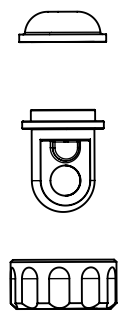
4



5



6



#### SHOCK FILLING

Fully extend the piston rod so the piston is at the bottom of the shock body.

Hold the shock upright and fill the shock body with shock oil as in the picture.

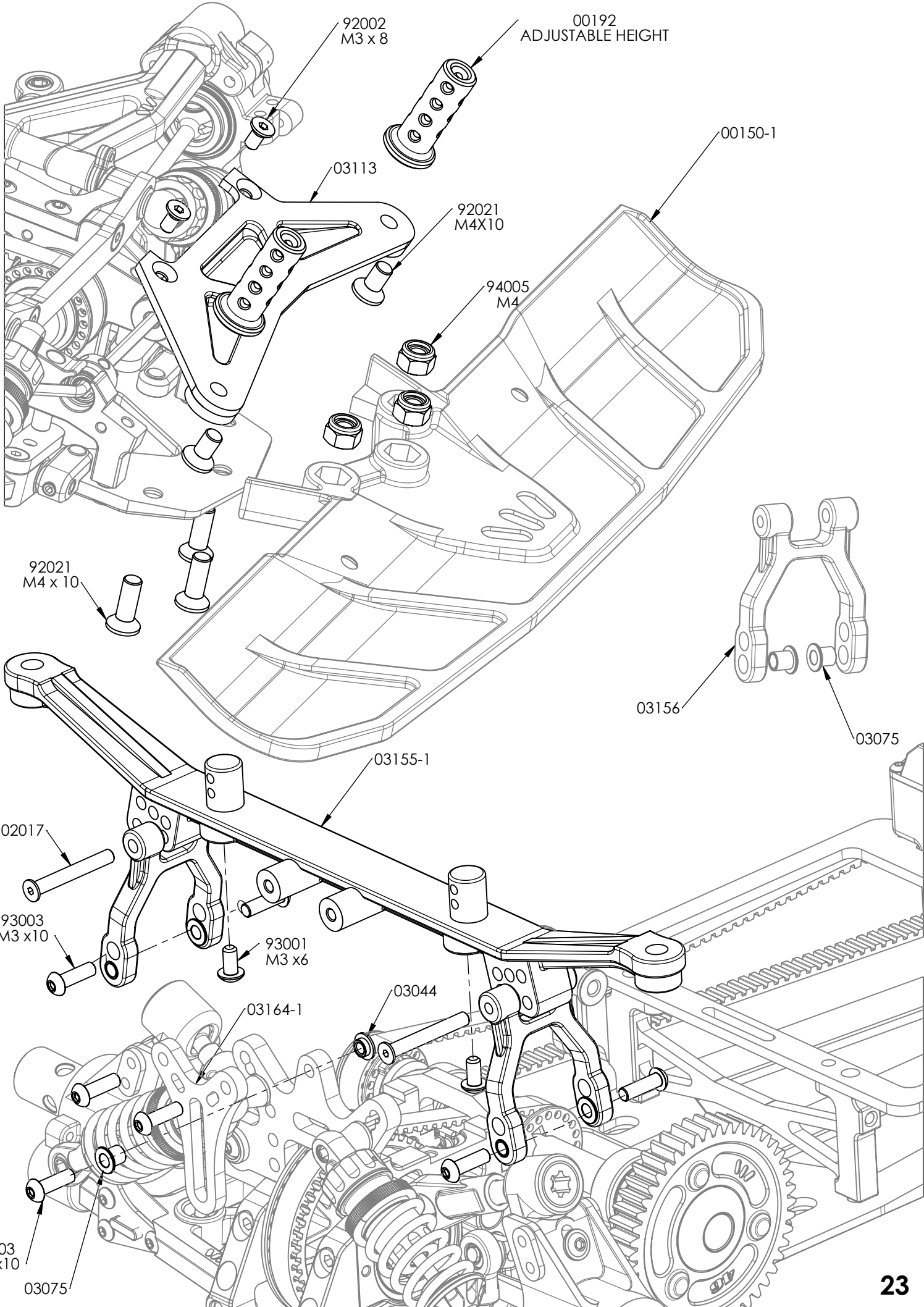
Let the oil settle and allow air bubbles to rise to the top. Slowly move the piston up and down until no more air bubbles appear. Add shock oil as necessary.

Pull the piston rod most of the way out of the shock bod. Let the shock rest for 5 minutes to allow the air bubbles to scape.

#### P- ONE SHOCKS OIL

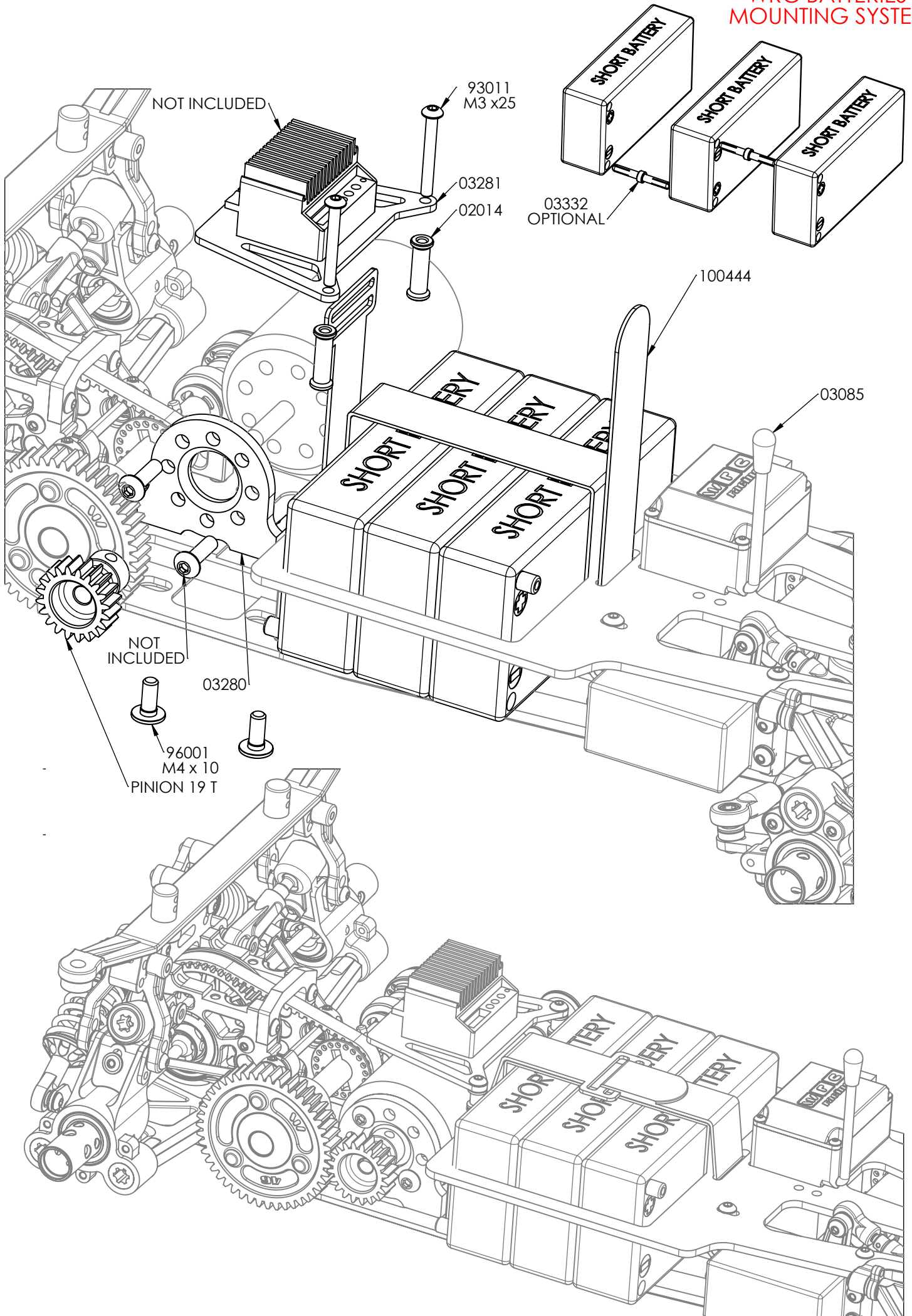
CODE	CST
RC0029	400
RC0062	500
RC0030	600 (IN KIT)
RC0063	700
RC0031	800







### WRC BATTERIES MOUNTING SYSTEM





# GT X EP

## SETUP SHEET

NAME \_\_\_\_\_  
 DATE \_\_\_\_\_  
 TRACK \_\_\_\_\_

### TRACK CONDITION

**SURFACE**  SMOOTH  MEDIUM  BUMPY  
**SIZE**  TIGHT  MEDIUM  FAST  
**TRACTION**  LOW  MEDIUM  HIGH

### TRANSMISSION

**PINION** 1st: 19 2nd: 24  
**SPUR GEAR** 1st: 61 2nd: 57

### CLUTCH SETTINGS

**SHOE**  STANDARD  OPTIONAL  
**SPRING** 0.50  
**BELL CLEARANCE /mm** 0.50  
**BELL AXIAL PLAY /mm** 0.10

### SHOCKS SETTINGS

	FRONT	REAR
<b>SPRINGS</b>		
<b>OIL</b>	600	600
<b>PISTON</b>	ORIGINAL	ORIGINAL
<b>LENGHT /mm</b>		
<b>PRELOAD /mm</b>		
<b>REBOUND %</b>	10%	10%

### ANTI-ROLL BAR

<b>FRONT</b>	2.3
<b>REAR</b>	3.2

### ARM BUSHES ORIENTATION

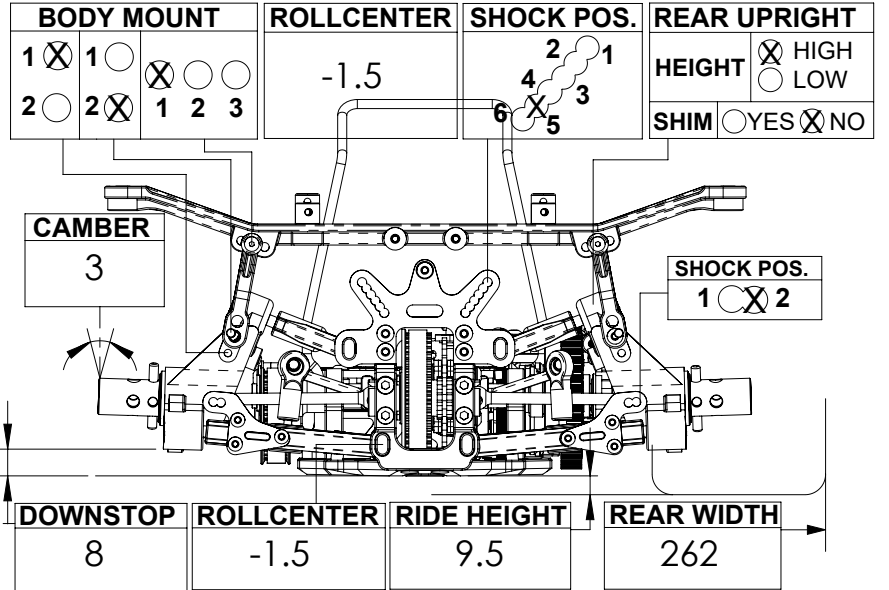
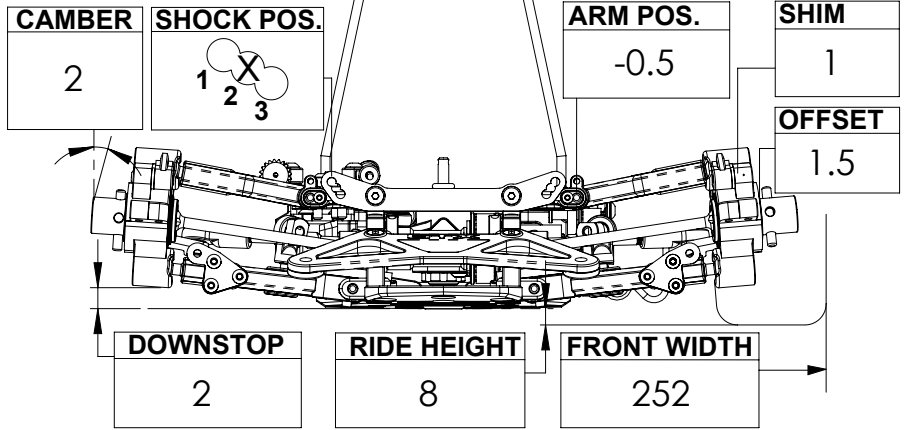
+0.5mm +1.0mm +1.5mm  
 -0.5mm -1.0mm -1.5mm

### BATTERY MOUNT

STANDARD  BRASS

### ENGINE MOUNT

STANDARD  BRASS



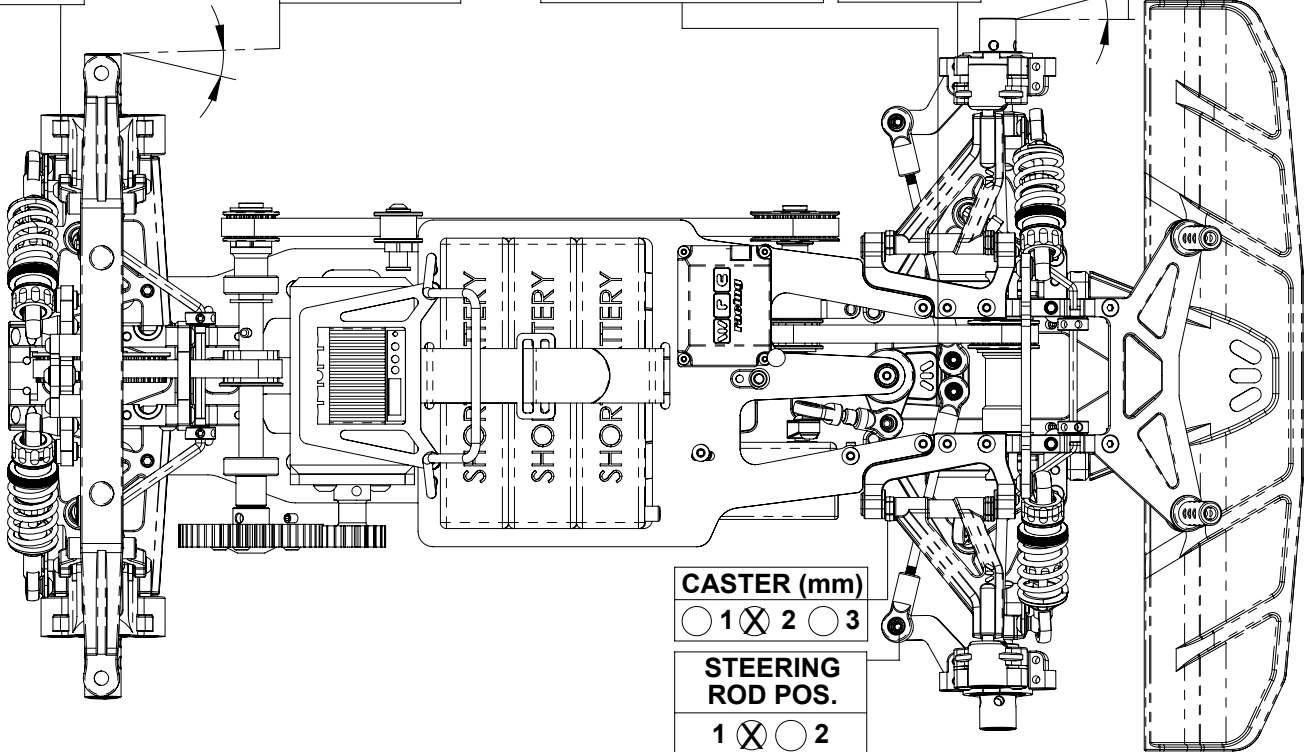
**DISC**  
 YES  
 NO

**TOE°**  
 2.5

**SERVO SAVER POS.**  
 FRONT (1)  
 REAR (2)

**DISC**  
 YES  
 NO

**TOE°**  
 1.5



# GT X EP

## SETUP SHEET

NAME \_\_\_\_\_  
 DATE \_\_\_\_\_  
 TRACK \_\_\_\_\_

### TRACK CONDITION

**SURFACE**  SMOOTH  MEDIUM  BUMPY  
**SIZE**  TIGHT  MEDIUM  FAST  
**TRACTION**  LOW  MEDIUM  HIGH

### TRANSMISSION

**PINION** 1st: \_\_\_\_\_ 2nd: \_\_\_\_\_  
**SPUR GEAR** 1st: \_\_\_\_\_ 2nd: \_\_\_\_\_

### CLUTCH SETTINGS

**SHOE**  STANDARD  OPTIONAL  
**SPRING** \_\_\_\_\_  
**BELL CLEARANCE /mm** \_\_\_\_\_  
**BELL AXIAL PLAY /mm** \_\_\_\_\_

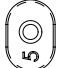


### SHOCKS SETTINGS

	FRONT	REAR
<b>SPRINGS</b>		
<b>OIL</b>		
<b>PISTON</b>		
<b>LENGHT /mm</b>		
<b>PRELOAD /mm</b>		
<b>REBOUND %</b>		

### ANTI-ROLL BAR

**FRONT** \_\_\_\_\_  
**REAR** \_\_\_\_\_

### ARM BUSHES ORIENTATION

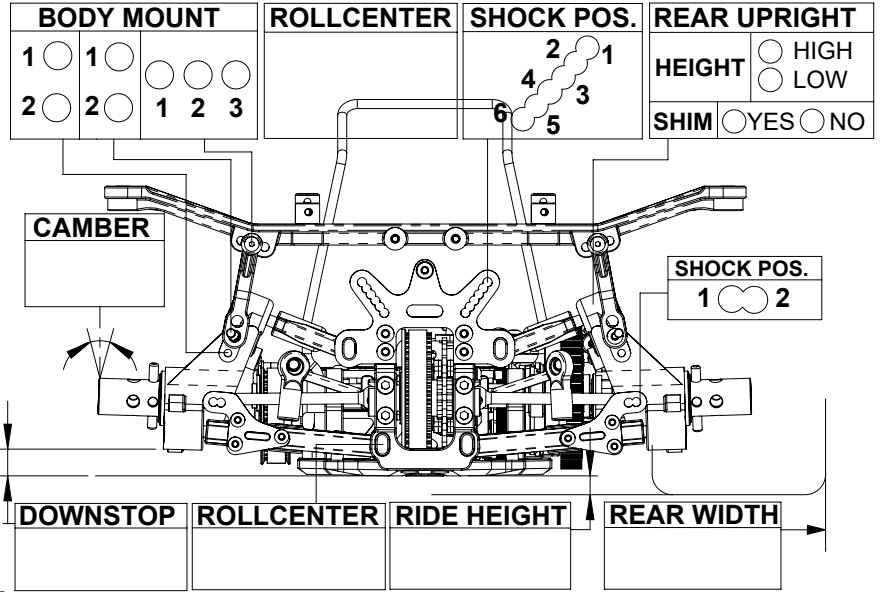
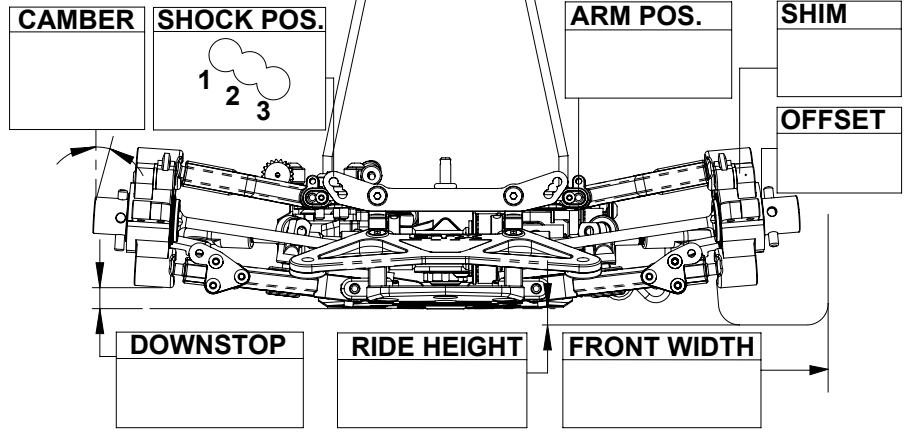
 +0.5mm / -0.5mm     +1.0mm / -1.0mm     +1.5mm / -1.5mm

### BATTERY MOUNT

STANDARD  BRASS

### ENGINE MOUNT

STANDARD  BRASS



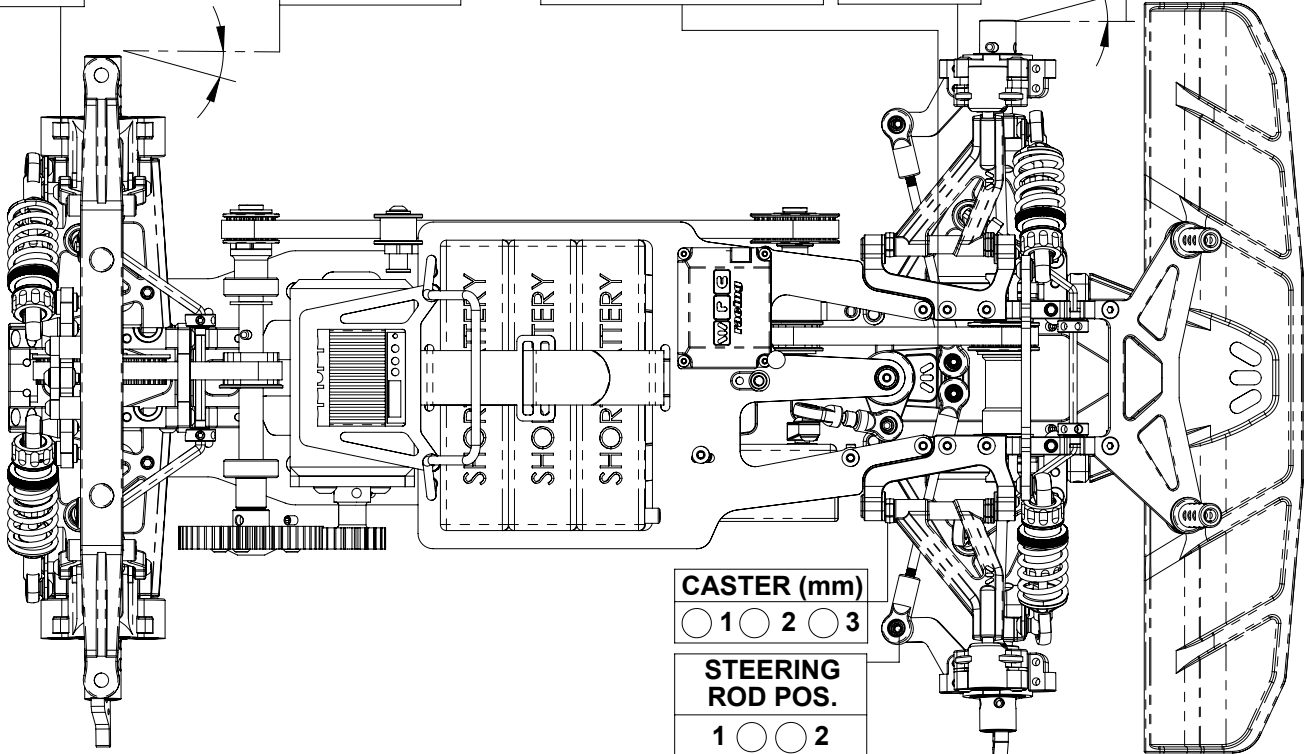
**DISC**  
 YES  
 NO

**TOE°**  
 \_\_\_\_\_

**SERVO SAVER POS.**  
 FRONT (1)  
 REAR (2)

**DISC**  
 YES  
 NO

**TOE°**  
 \_\_\_\_\_



**CASTER (mm)**  
 1  2  3

**STEERING ROD POS.**  
 1  2

**WIRC**  
PROFESSIONAL RC CAR

[WWW.WIRCRACING.COM](http://WWW.WIRCRACING.COM)