

ST2.2

NEW GENERATION RC CAR

1/10 ONROAD FWD ELECTRIC
RC PROFESSIONAL TOURING CAR



INSTRUCTION MANUAL

WIRC
PROFESSIONAL RC CAR

WWW.WIRCRACING.COM

INTRODUCTION

ST2 is a new generation high quality 1/10 scale electric touring car.
ST2 is supplied in a box equipped with Instruction Manual.
Its use is intended for more than 16 years old persons with experience on rc model car field.
Children and all the persons without this requirement **MUST** have direct supervision of a knowledgeable adult responsible.

SAFETY PRECAUTIONS

Instruction Manual **MUST** be read and fully understood before to start building and operating functions.
Always keep Instruction Manual in safety place, ready to be consulted for any reference you need.
Use only original WIRC spare parts.

GENERAL INFORMATION

Assemble the kit only away from the reach of children.
Follow the building and operating instructions using the utmost care.
Don't put any part of your body inside rotating and moving elements as this may cause damage or serious injury.
Check and clean the model before putting it away.
Don't use your model car in public places or in roads and areas where it could generate conflict with person or vehicular traffic.
The model car is controlled by radio: you **MUST** put great care to avoid loss of radio control always keeping a safety margin all around your model in order to prevent any collision.
Operating frequency: check and be sure it is clear and not shared with anybody at same time; it could cause loss of control of the RC model.
Always turn on your transmitter before you turn on the receiver in the car and always turn off the receiver before you turn off your transmitter.
Keep the wheels of the model off the ground when checking the operation of the radio equipment.
Disconnect the battery pack before storing your model.

WARRANTY

WIRC guarantees this model kit to be free from defects in both material and workmanship within 30 days of purchase.
The total monetary value under warranty will in no case exceed the cost of the original kit purchased.
This warranty doesn't cover any components damaged by use or modification or as result of wear.
Part or parts missing from this kit must be reported within 30 days of purchase.
No part or parts will be sent under warranty without proof of purchase.
If you find a defective or missing part, contact the local distributor.
Customer service and support will be provided through local hobby store.
No warranties are expressed or implied that cover damage caused by what is considered normal use or cover or imply how long any model cars' components or electric components will last before requiring replacement.
Due to the high performance level of this model car you will need to periodically maintain and replace consumable components; any and all warranty coverage will not cover replacement of any part or component damaged by neglect, abuse or improper or unreasonable use.
This includes but is not limited to damage from crashing, excessive moisture, improper use or no maintenance or user modifications which compromise the integrity of components.
Warranty will not cover components that are considered consumable on RC model car.
WIRC doesn't pay nor refund on any component sent from WIRC or its distributor for warranty.
WIRC reserves the right to make final determination of the warranty status of any component or part
Use only original WIRC spare part:

CUSTOMER SUPPORT

Please don't hesitate to contact WIRC support at info@wircracing.com for any problem or question.
Also kindly visit our website www.wircracing.com to find last updates, set-up information, option parts and other information.

World racing car s.r.l.
Via A. Volta, 2 bis
36040 Brendola (VI)
ITALY

Phone: 0039 0444 1792263
E-mail: info@wircracing.com
Website: www.wircracing.com

WIRC
PROFESSIONAL RC CAR

TECHNICAL INFORMATION

- TRANSMISSION: 2 WHEEL DRIVE
- BODY: TOURING MODEL (NOT INCLUDED)
- ADJUSTABLE FRONT TOE, CAMBER AND CASTER
- ADJUSTABLE REAR TOE AND CAMBER
- BUMPER /FRONT BACKSTOP
- CARBON CHASSIS
- FULL BALL BEARING
- DIFFERENTIAL GEAR
- LENGTH 373 MM.
- WIDTH187 MM.
- ADJUSTABLE WHEEL BASEMIN. 250 MM. - MAX 256 MM.

ADDITIONAL ITEMS NEEDED FOR COMPLETION (REQUIRED BUT NOT INCLUDED IN THE KIT)



ELECTRIC MOTOR
PINION GEAR



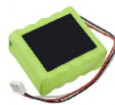
TRANSMITTER



RECEIVER



LOW PROFILE STEERING SERVO



BATTERIES
FOR TRANSMITTER



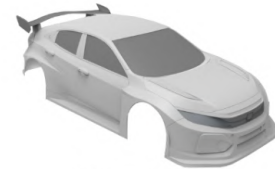
WHEEL - TYRES - INSERTS



LIPO BATTERY



SPEED CONTROLLER



LEXAN BODY
NOT INCLUDED

TOOLS REQUIRED

THESE TOOLS ARE NOT INCLUDED IN THE KIT BUT ARE REQUIRED FOR PROPER ASSEMBLY



ALLENS:
1.5 mm
2 mm
3 mm



SOCKET
5mm
7mm



SIDE CUTTERS



COMBINATION PLIERS



SCISSORS



TOOL FOR
TURNBUCKLES/NUTS



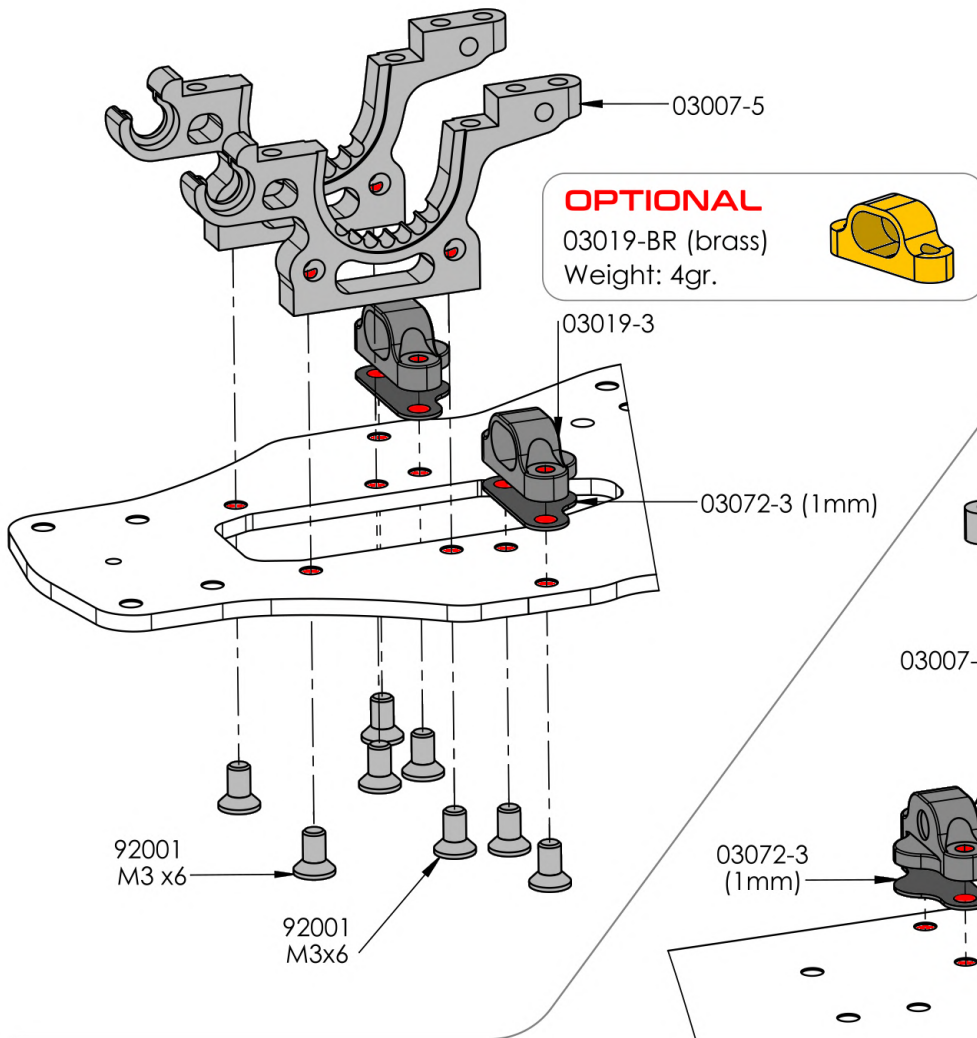
GREASE



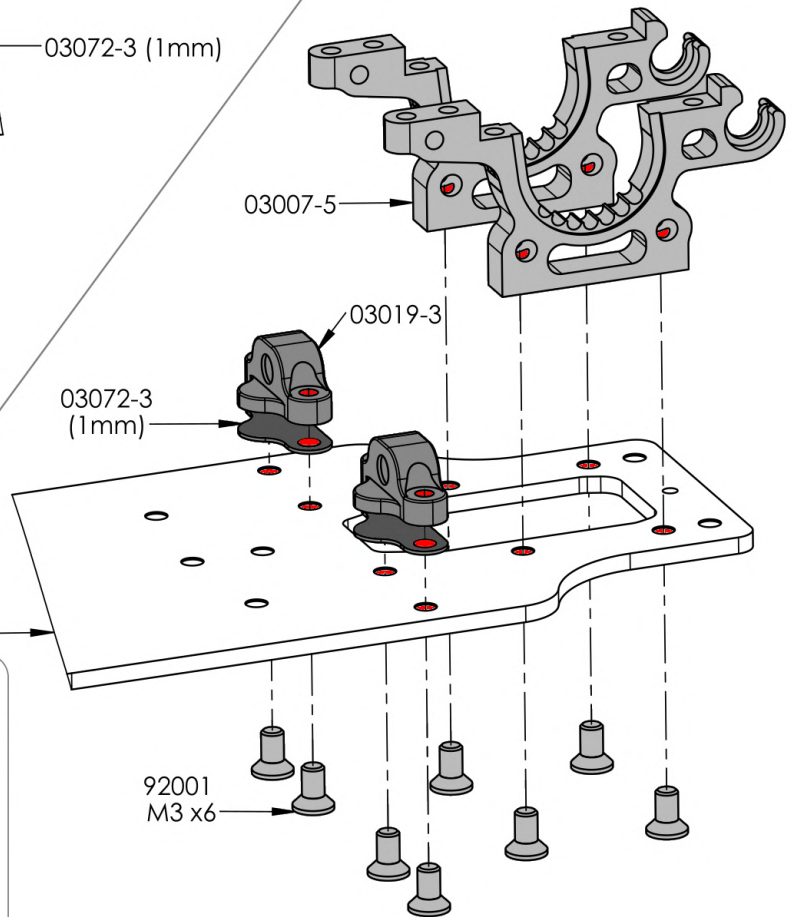
OILS:
BEARING OIL
SILICONE OIL

NOTICE:

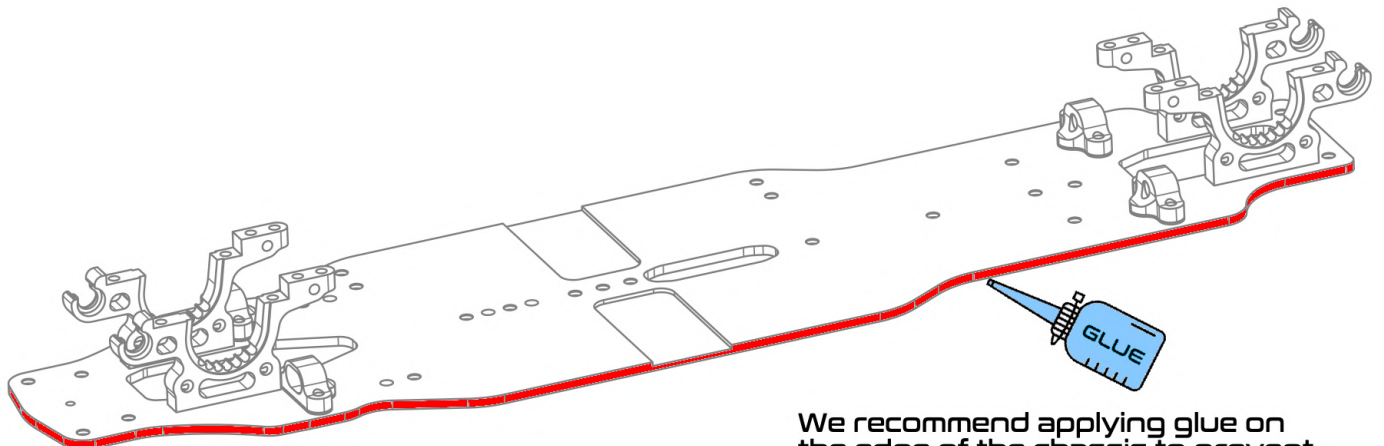
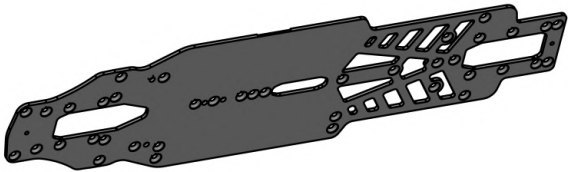
THE FOLLOWING ITEMS ARE NEEDED FOR COMPLETION OF THE ST2 ; THEY ARE NOT INCLUDED IN THIS KIT (UNLESS NOTED) AND SHOULD BE OBTAINED FROM YOUR LOCAL HOBBY SHOP.
BE SURE TO READ THE INSTRUCTION COMPLETELY PRIOR TO ASSEMBLY



Rear Bulkheads



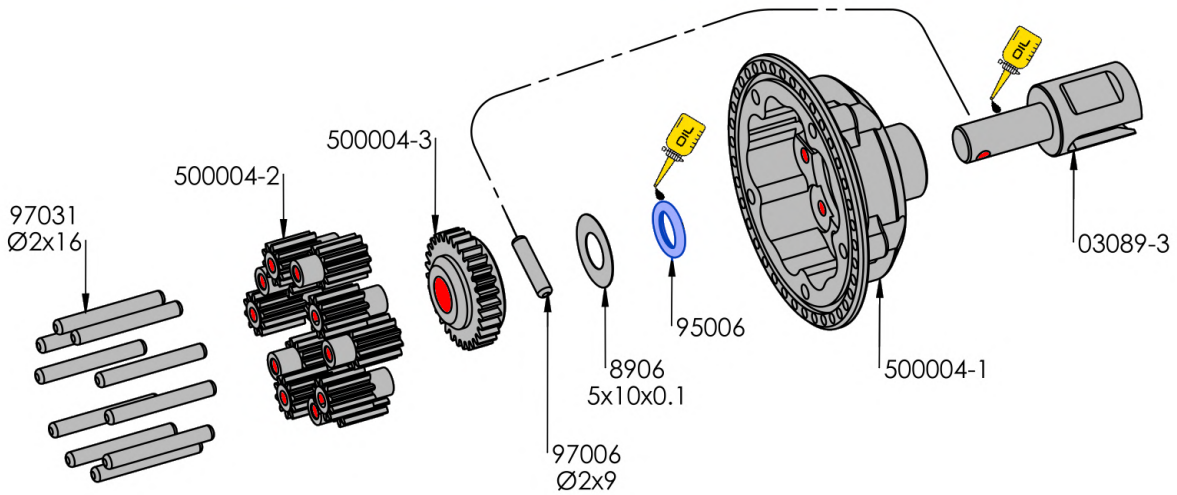
OPTIONAL
03474-1 ALU 7075 T6



We recommend applying glue on the edge of the chassis to prevent the carbon layers to split.

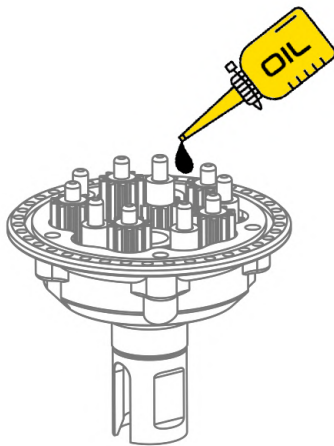
FOLLOW CLOSELY THE INSTRUCTIONS, THIS DIFF GEAR HAS TO BE MOUNTED CORRECTLY TO WORK WELL

1

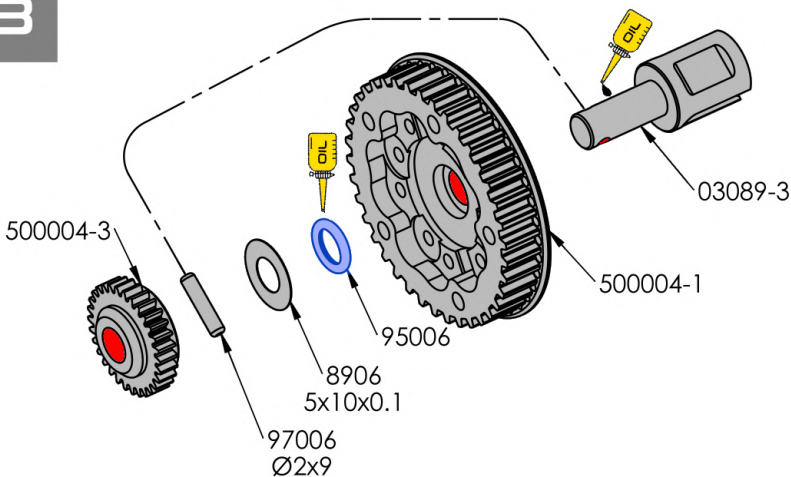


2

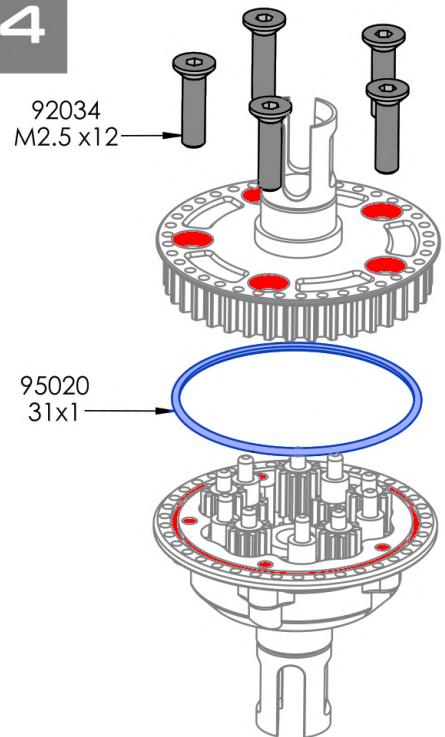
SILICONE OIL 1000 Q.ty 1g



3

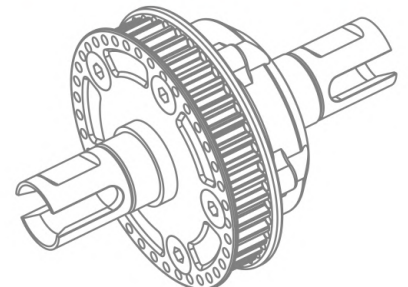


4



If the gears are aligned the 2 sides of the Diff should close easily.

DON'T FORCE IT TO CLOSE



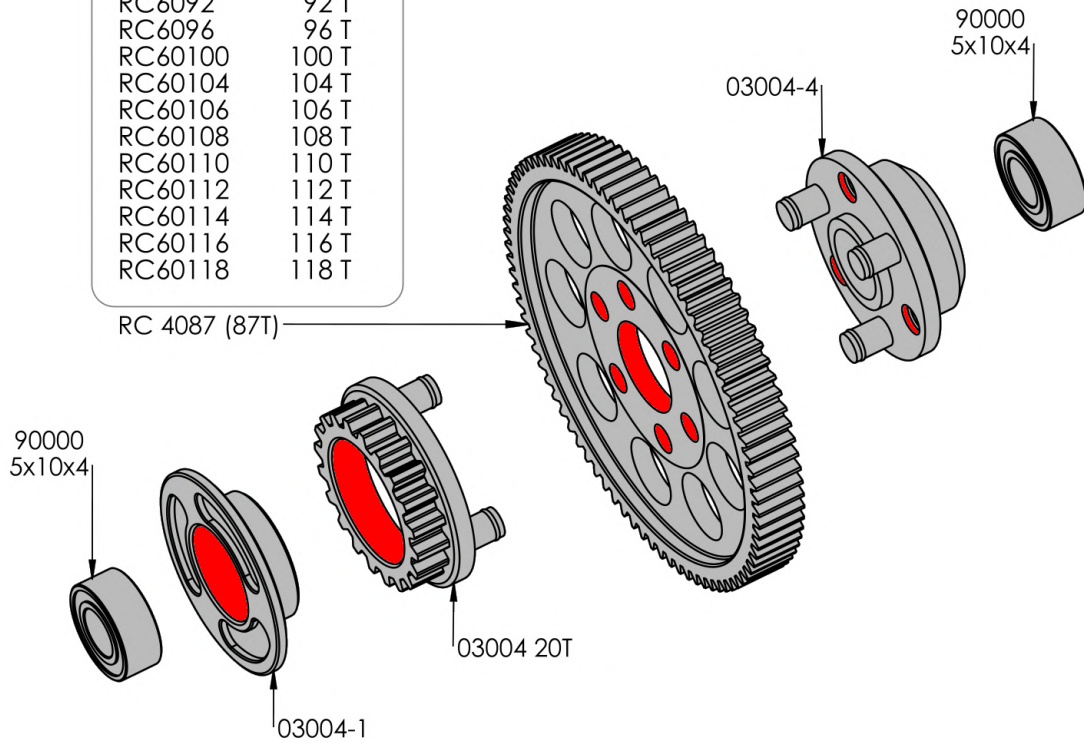
OPTIONAL

SPUR GEAR P48

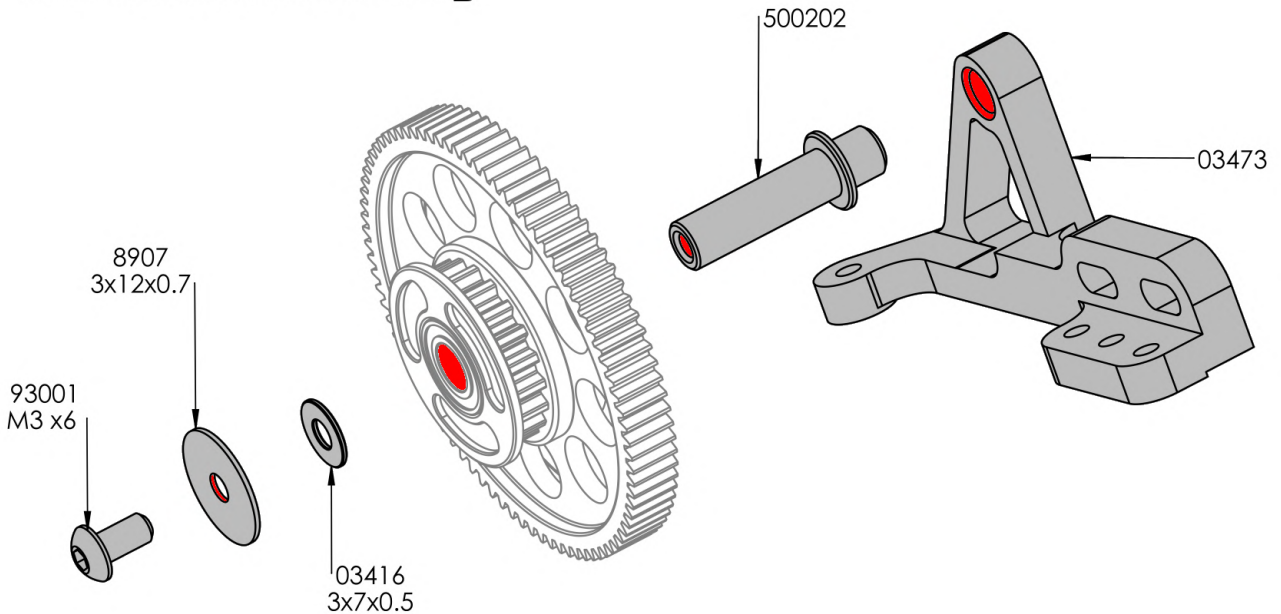
RC4078	78 T
RC4084	84 T
RC4087	87 T

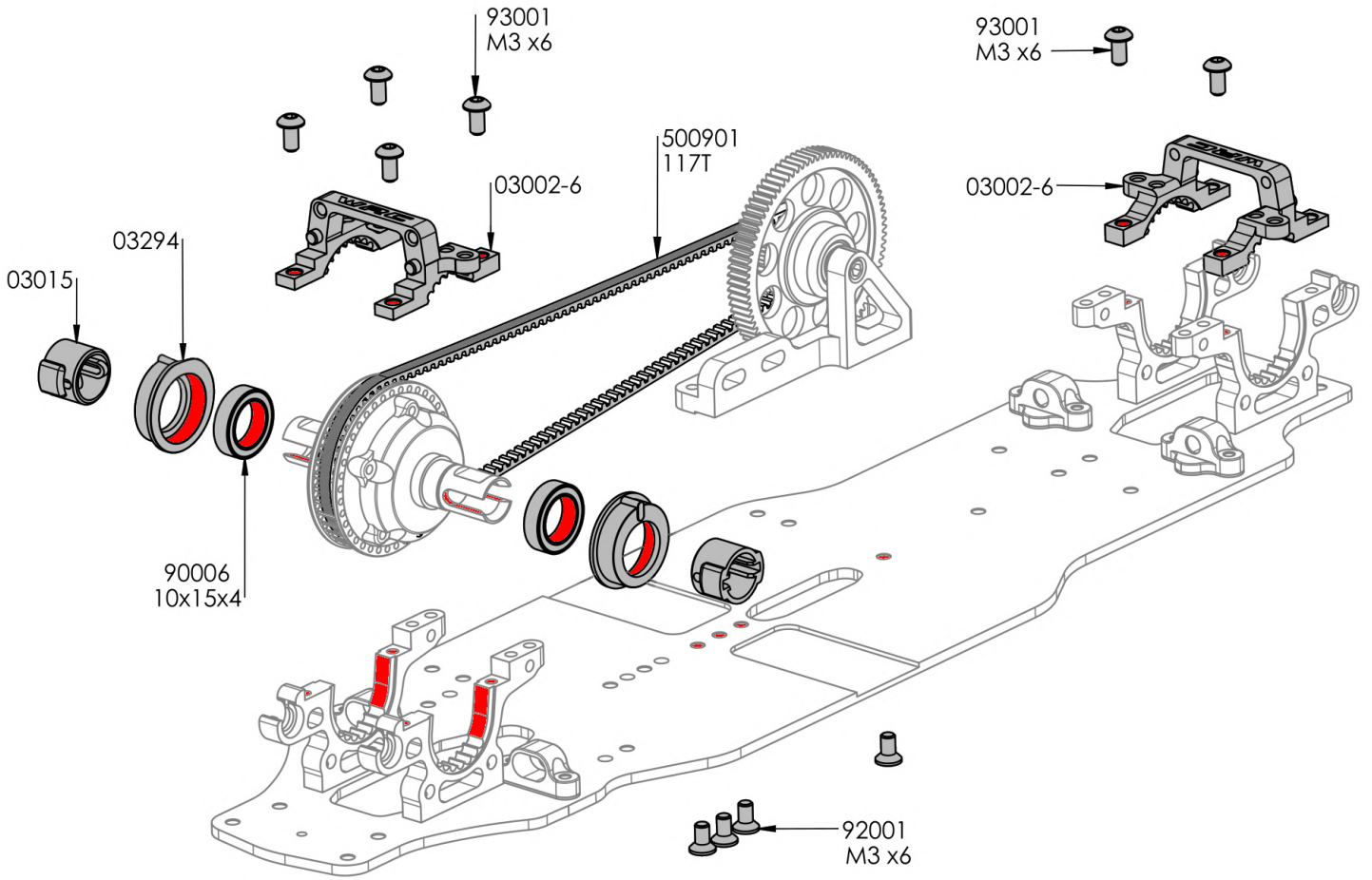
SPUR GEAR P64

RC6092	92 T
RC6096	96 T
RC60100	100 T
RC60104	104 T
RC60106	106 T
RC60108	108 T
RC60110	110 T
RC60112	112 T
RC60114	114 T
RC60116	116 T
RC60118	118 T

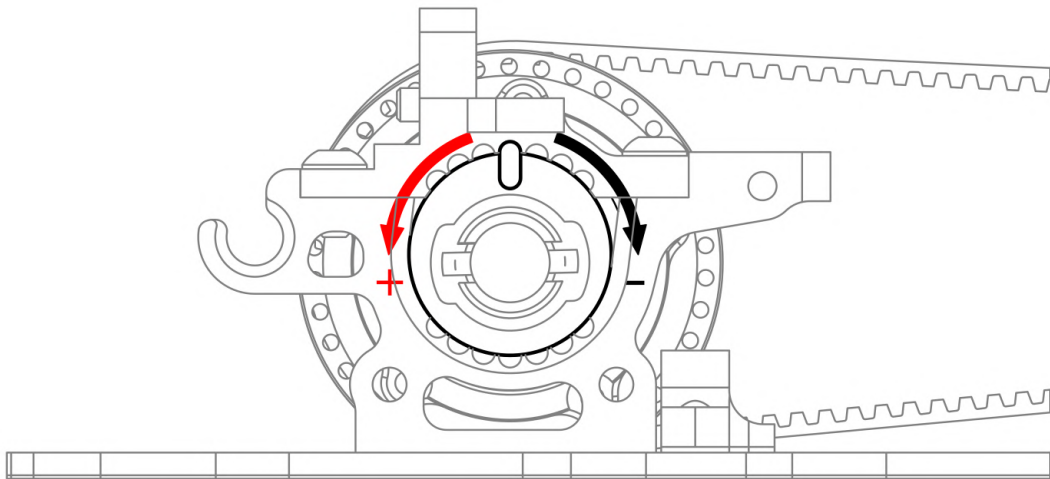


This side towards bearing



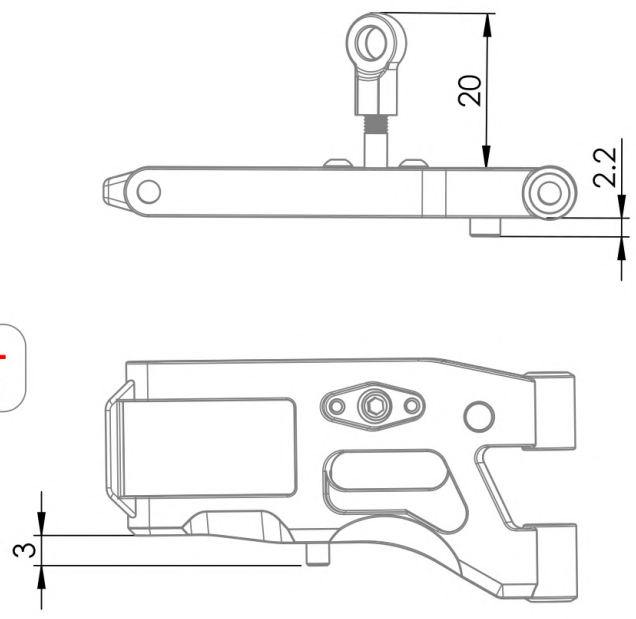
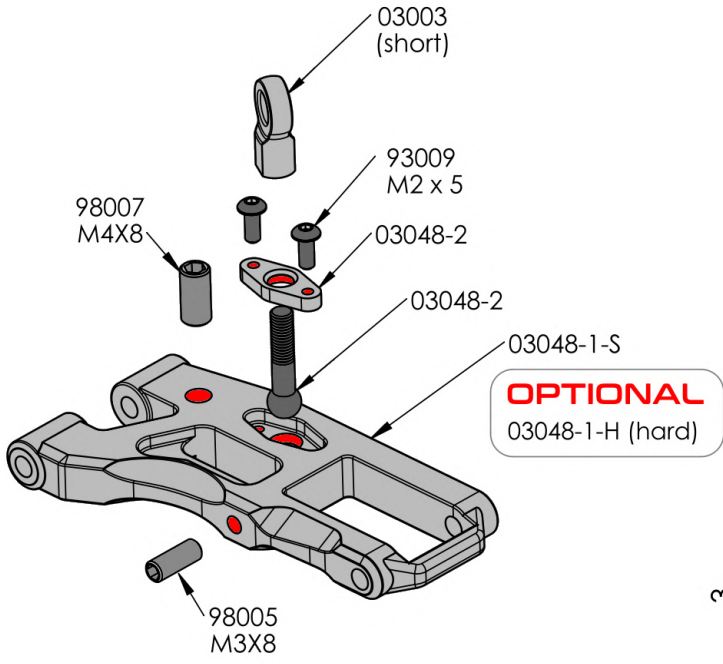


FRONT BELT ADJUSTMENT



Front Lower Arms

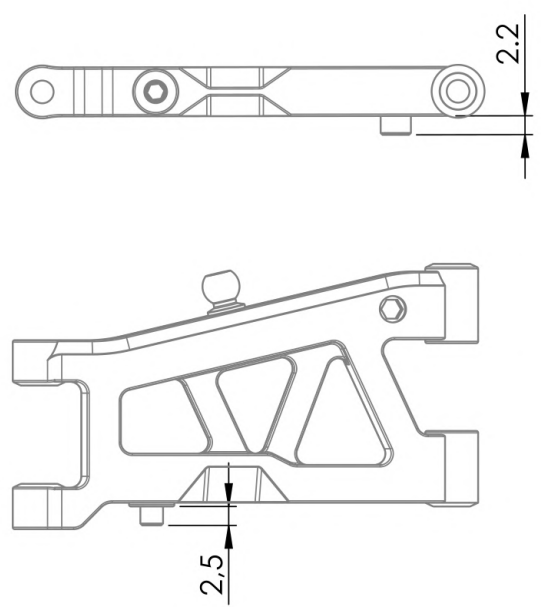
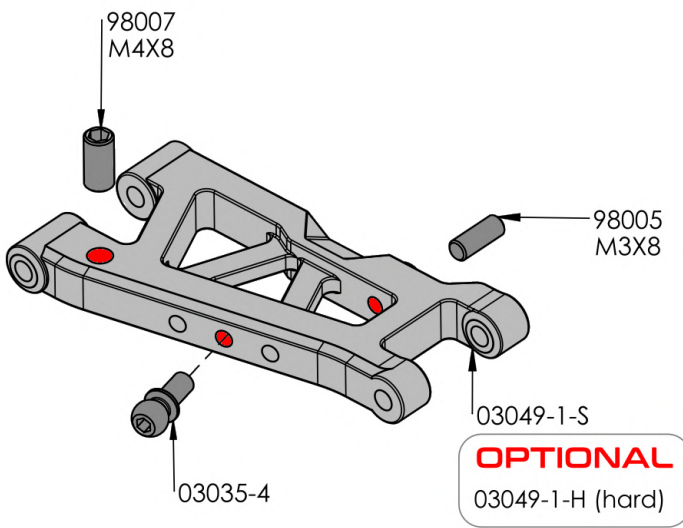
X2



LEFT SIDE SHOWN ABOVE

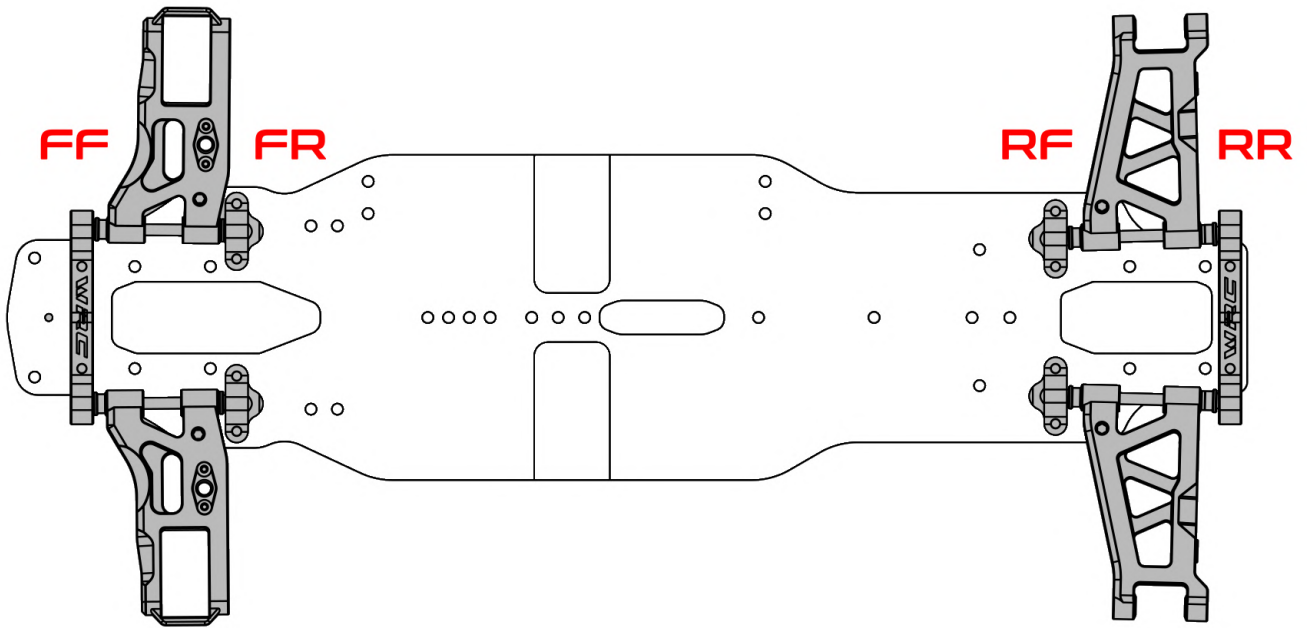
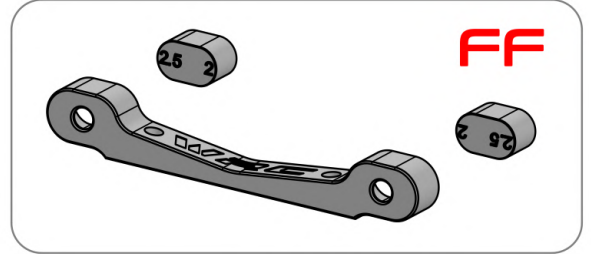
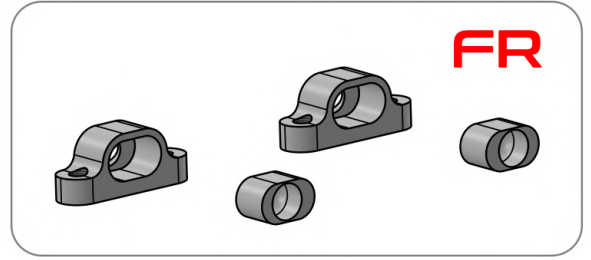
Rear Lower Arms

X2

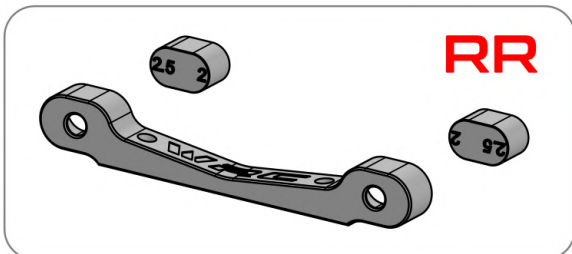
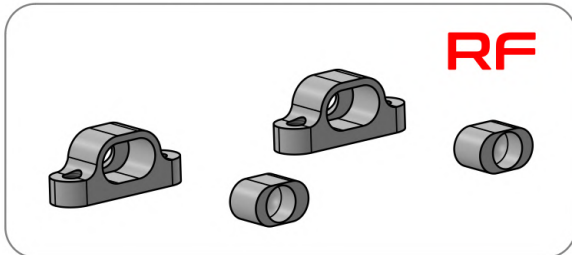


Front Arm Angles Diagram

		FR MOUNT					
		43,5	44,5	45	46	47	47,5
FF MOUNT		0°	0,5°	1°	1,5°	2°	3°
		-0,5°	0°	0,5°	1°	1,5°	2°
		-1°	-0,5°	0°	0,5°	1°	1,5°
		-1,5°	-1°	-0,5°	0°	0,5°	1°
		-2°	-1,5°	-1°	-0,5°	0°	0,5°
		-3°	-2°	-1,5°	-1°	-0,5°	0°

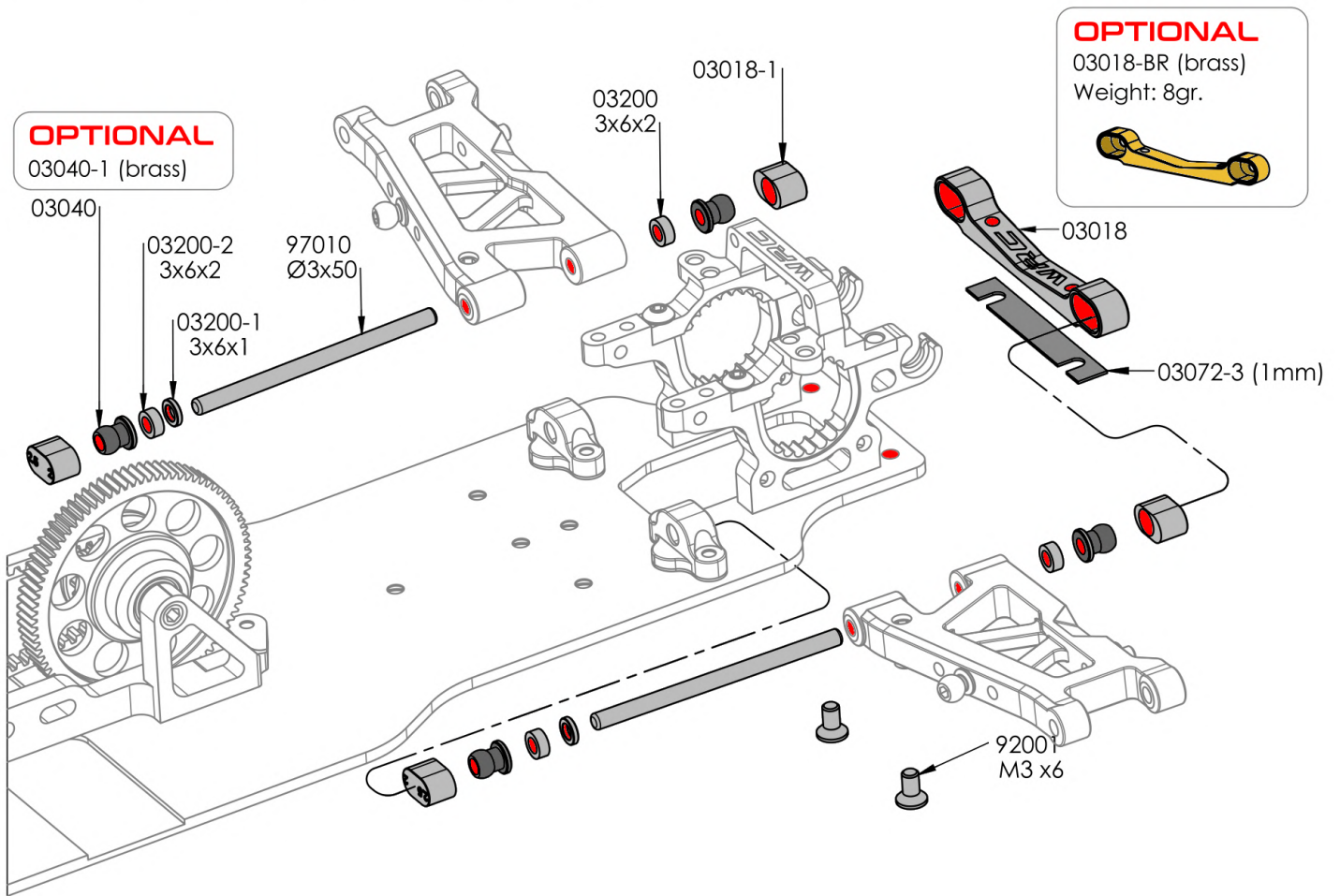


Rear Arm Angles Diagram



		RF MOUNT					
		39,5	40,5	41	42	43	43,5
RR MOUNT		2,5°	2°	1,5°	1°	0,5°	0°
		3°	2,5°	2°	1,5°	1°	0,5°
		3,5°	3°	2,5°	2°	1,5°	1°
		4°	3,5°	3°	2,5°	2°	1,5°
		4,5°	4°	3,5°	3°	2,5°	2°
		5°	4,5°	4°	3,5°	3°	2,5°

Rear Lower Arms Mounting

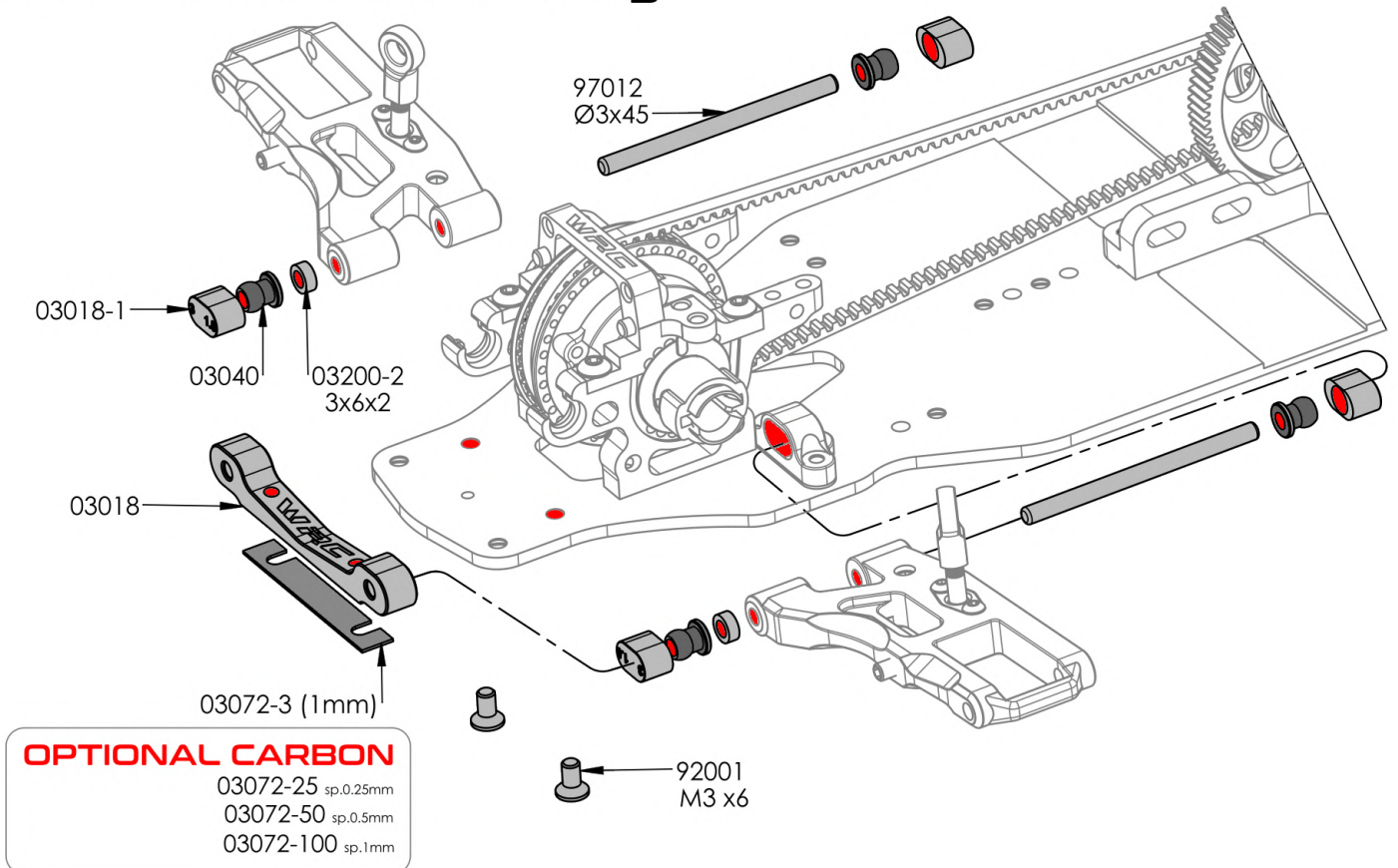


OPTIONAL

03018-BR (brass)
Weight: 8gr.

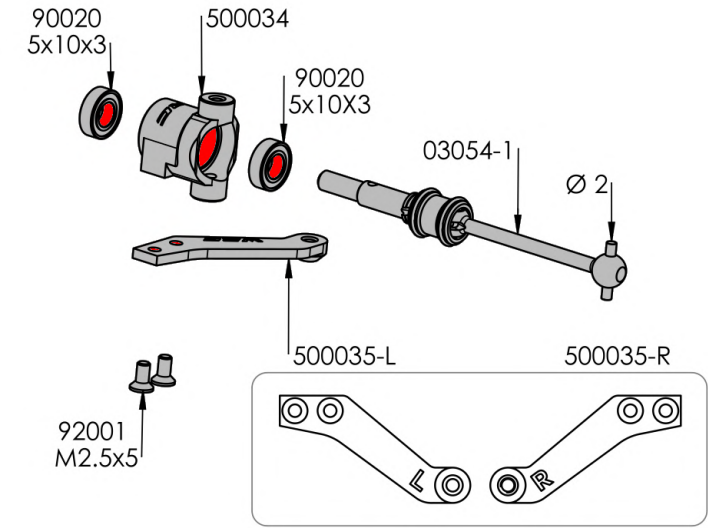


Front Lower Arms Mounting

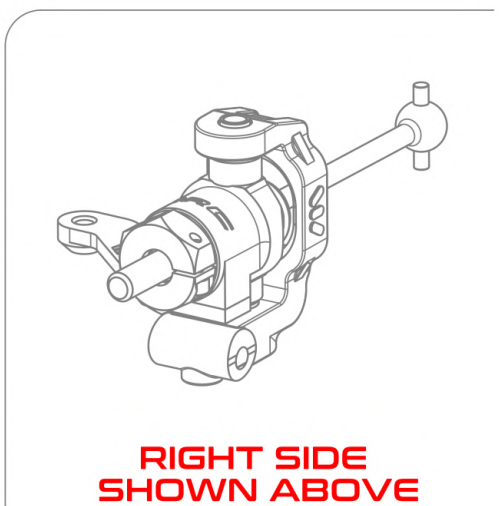
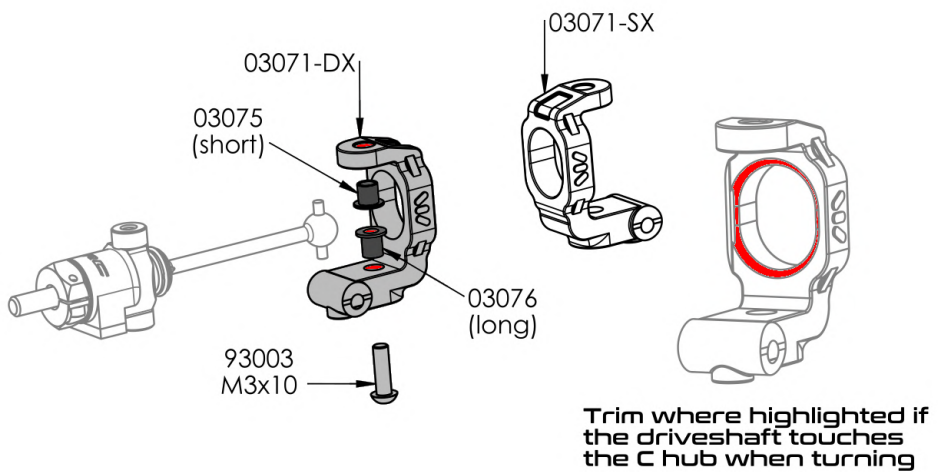
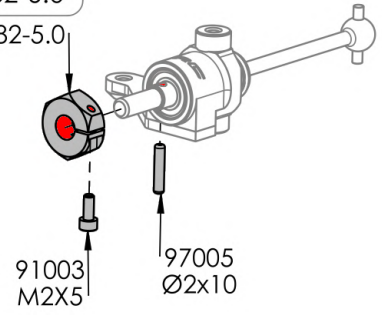


Left & Right Front Hub

X2

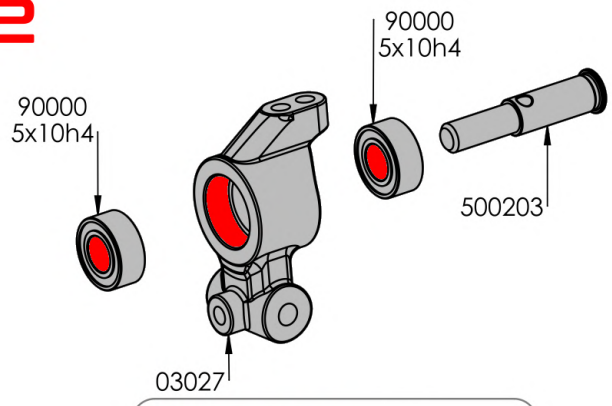


OPTIONAL
03082-5.5
03082-6.0
03082-5.0



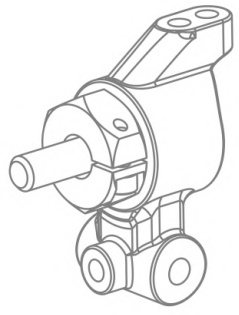
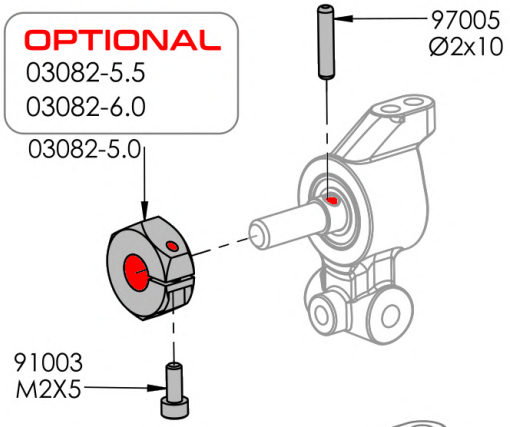
Rear Hub

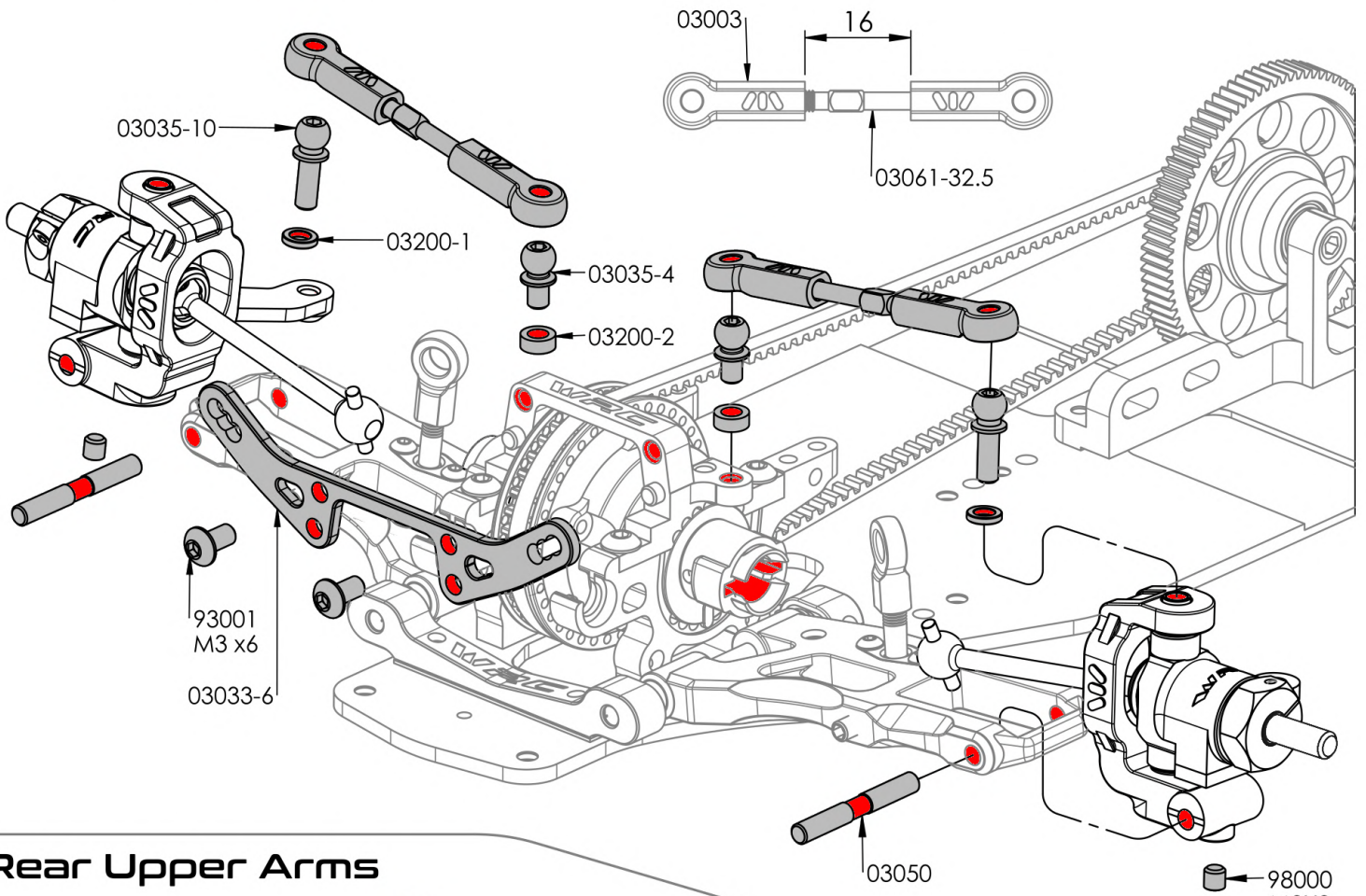
X2



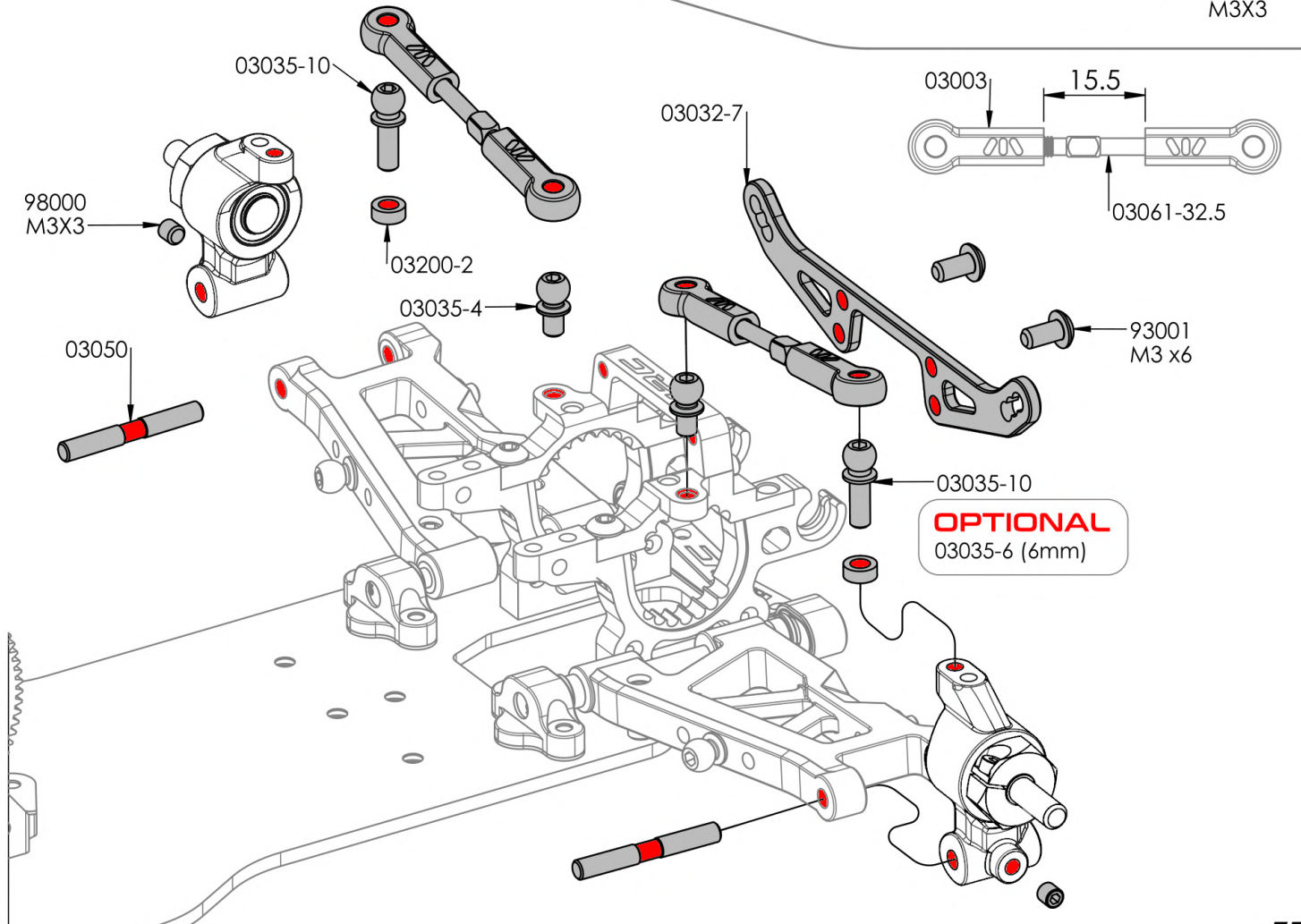
OPTIONAL
500036
ALU 7075 T6

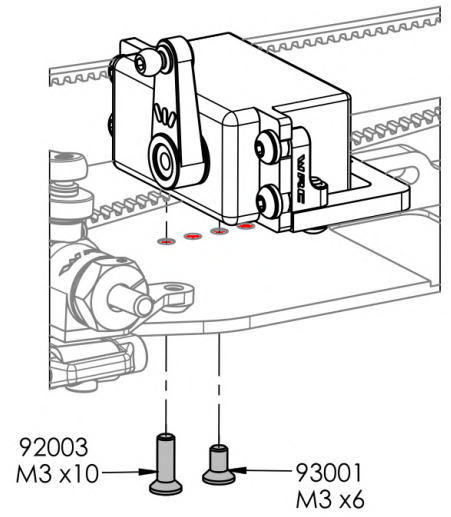
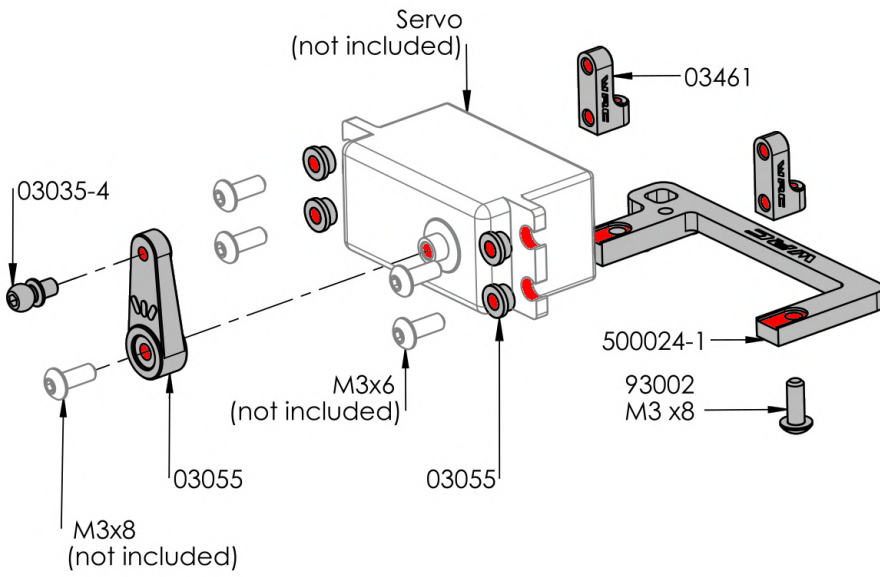
OPTIONAL
03082-5.5
03082-6.0
03082-5.0



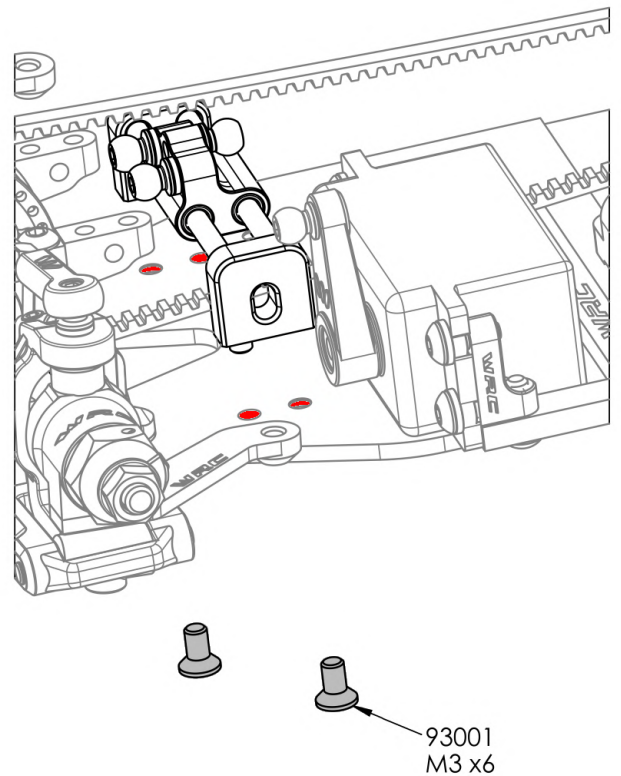
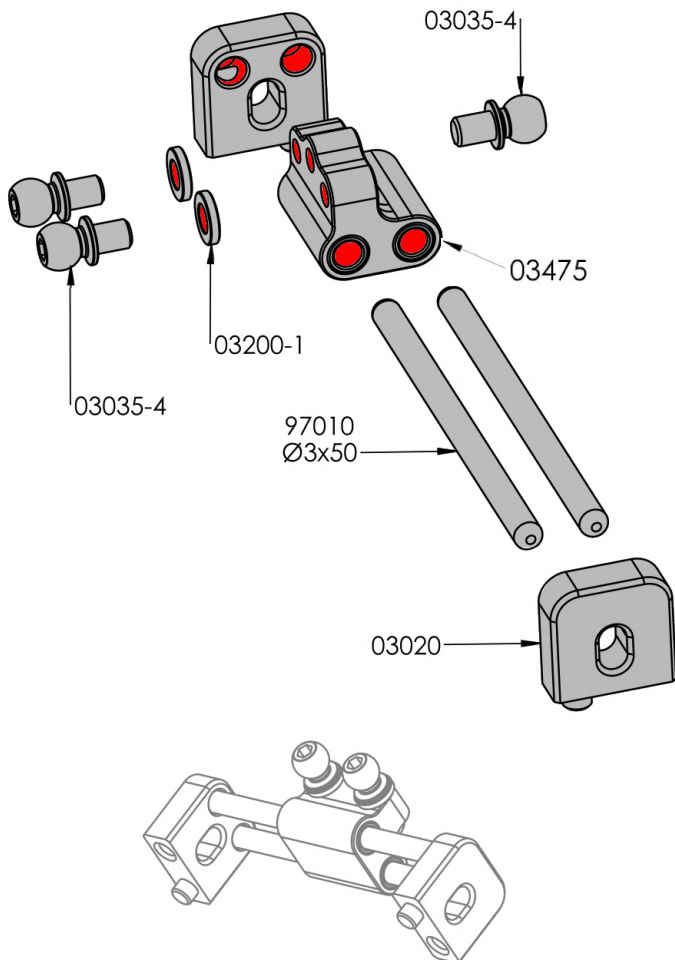


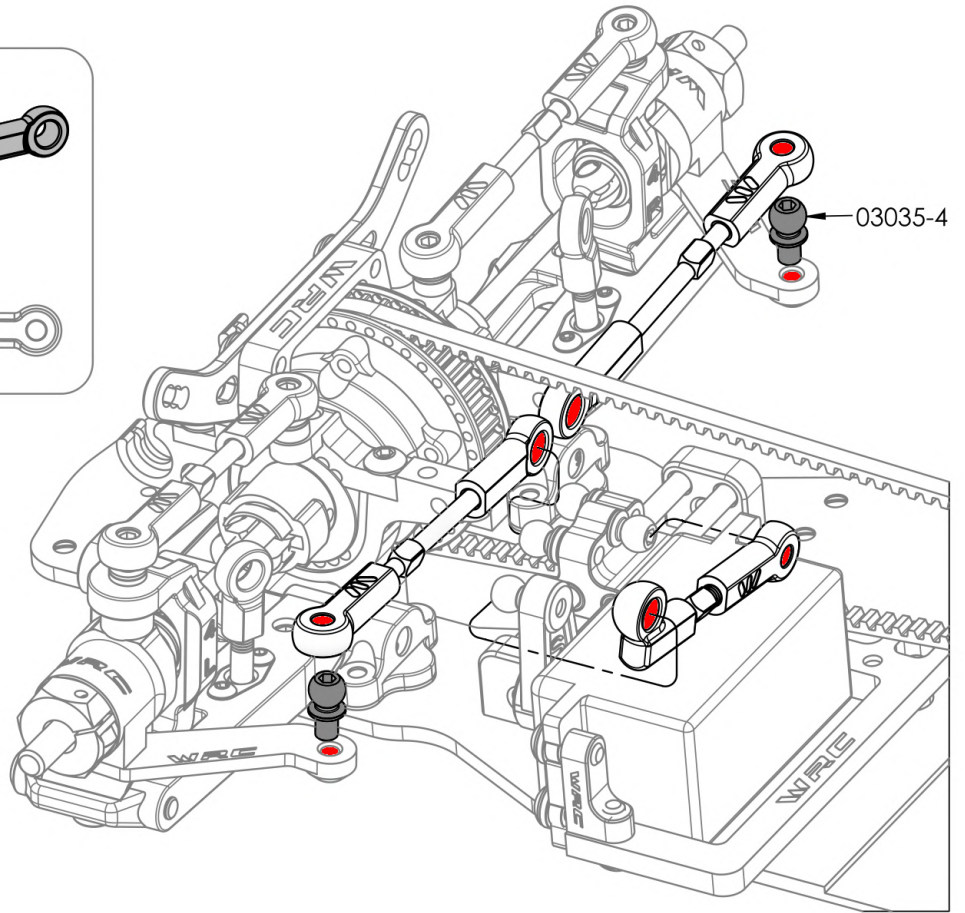
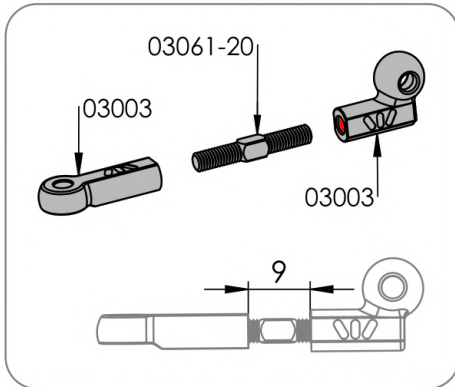
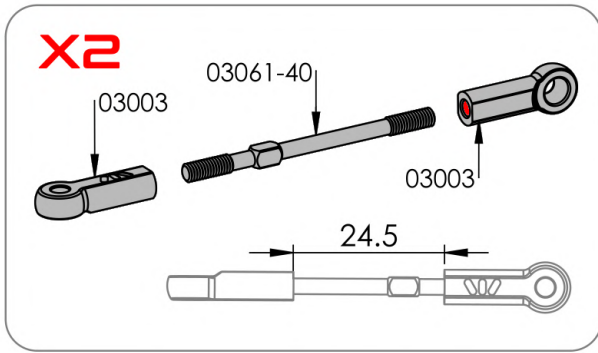
Rear Upper Arms



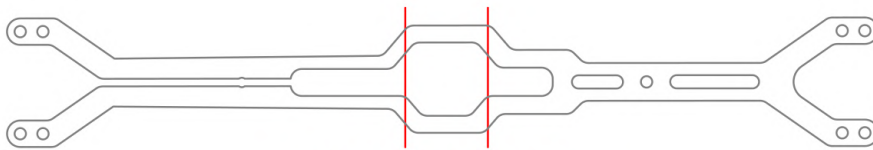


Steering Levers



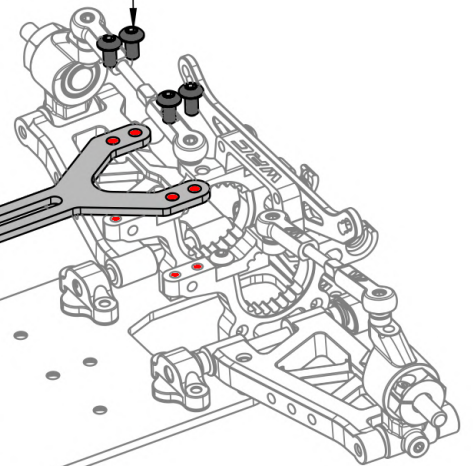


Upperdeck



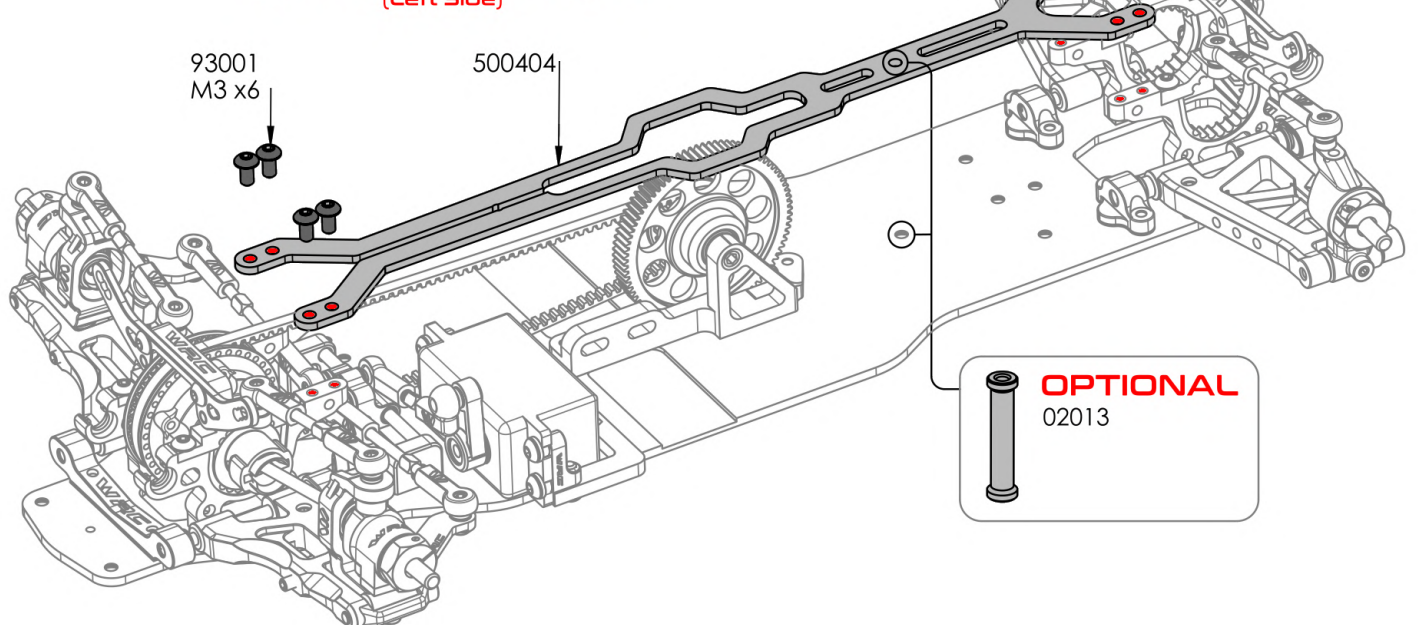
**Check Orientation:
Tighter Side towards Engine
(Left Side)**

93001
M3 x6



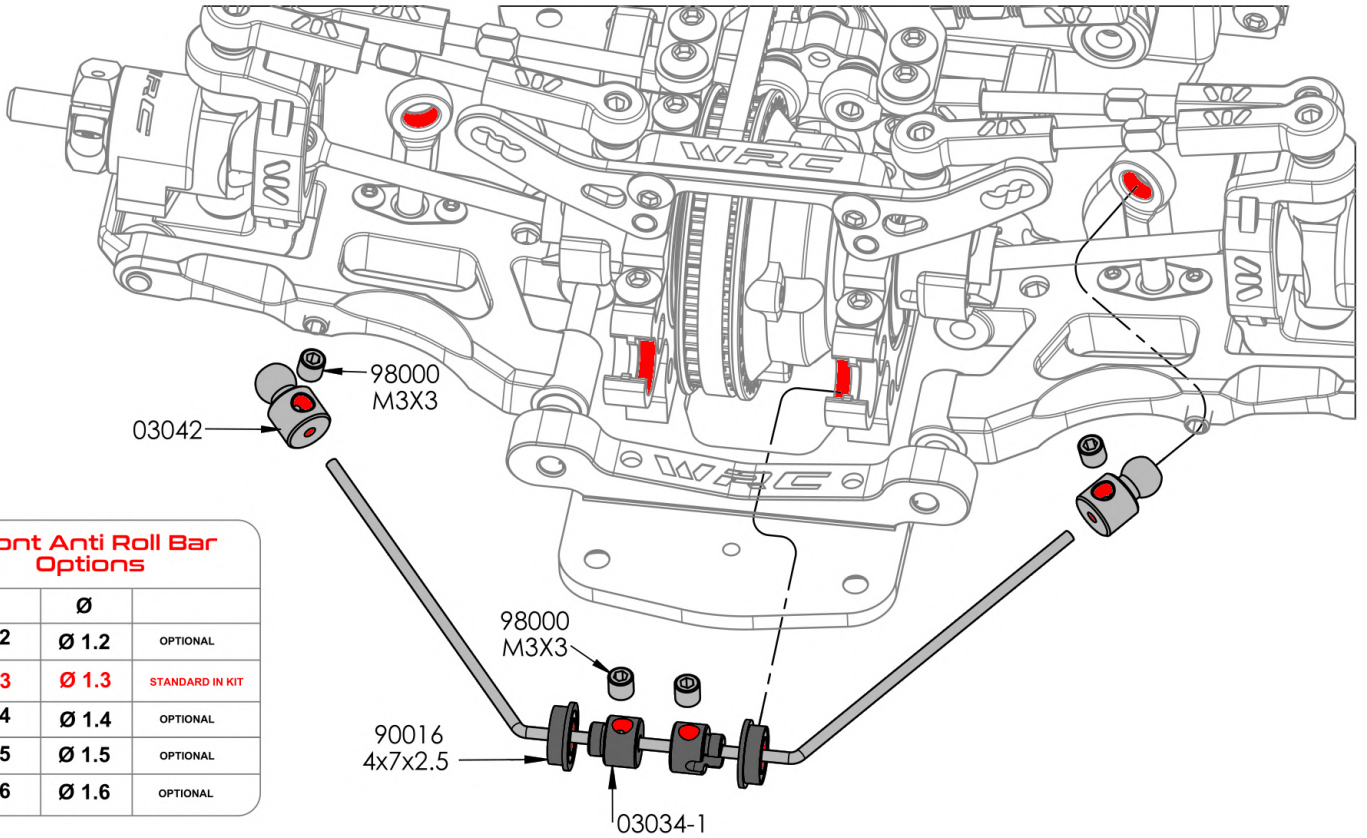
93001
M3 x6

500404



OPTIONAL
02013

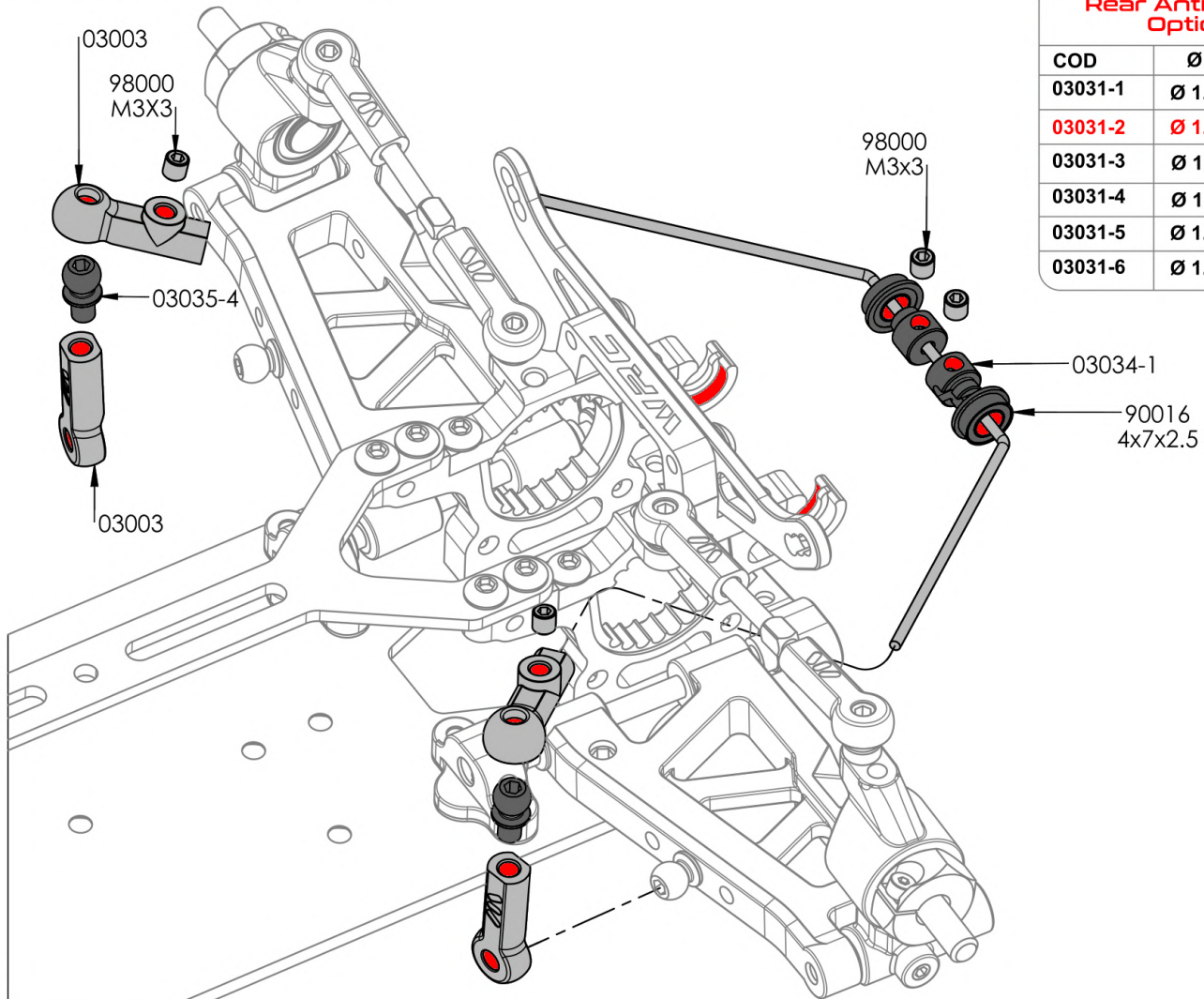
Front Anti Roll Bar



Front Anti Roll Bar Options

COD	Ø	
03031-2	Ø 1.2	OPTIONAL
03031-3	Ø 1.3	STANDARD IN KIT
03031-4	Ø 1.4	OPTIONAL
03031-5	Ø 1.5	OPTIONAL
03031-6	Ø 1.6	OPTIONAL







Rear Anti Roll Bar

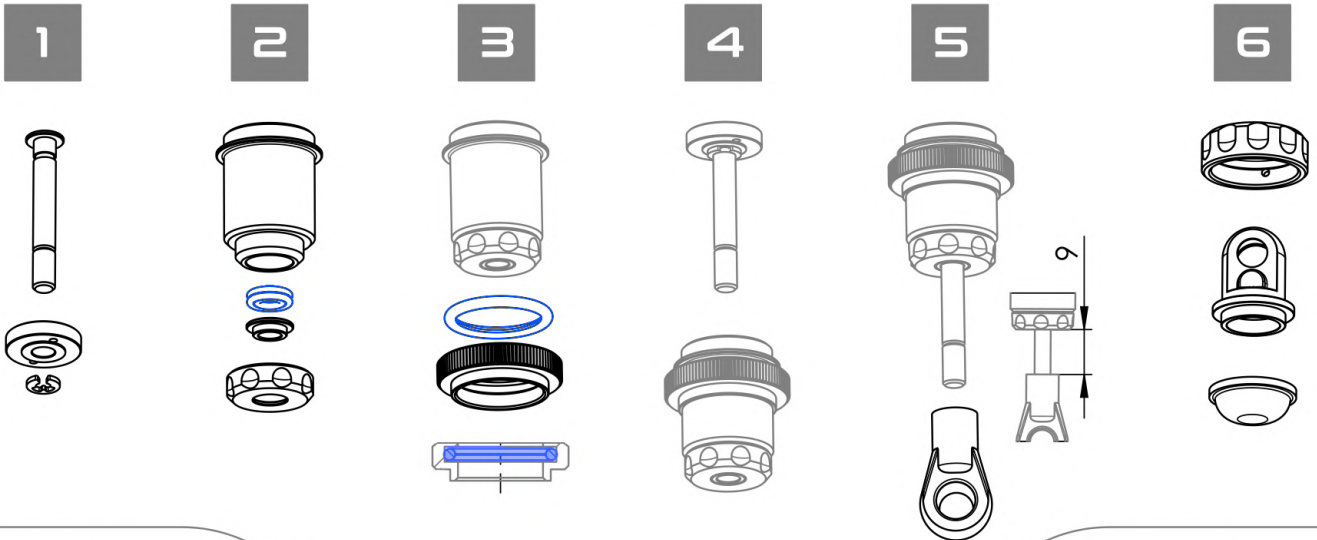
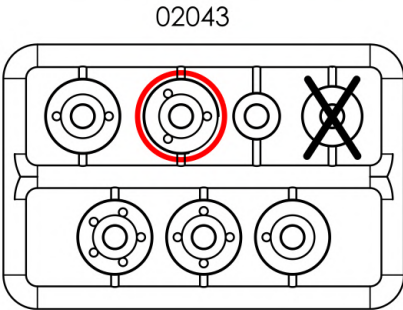
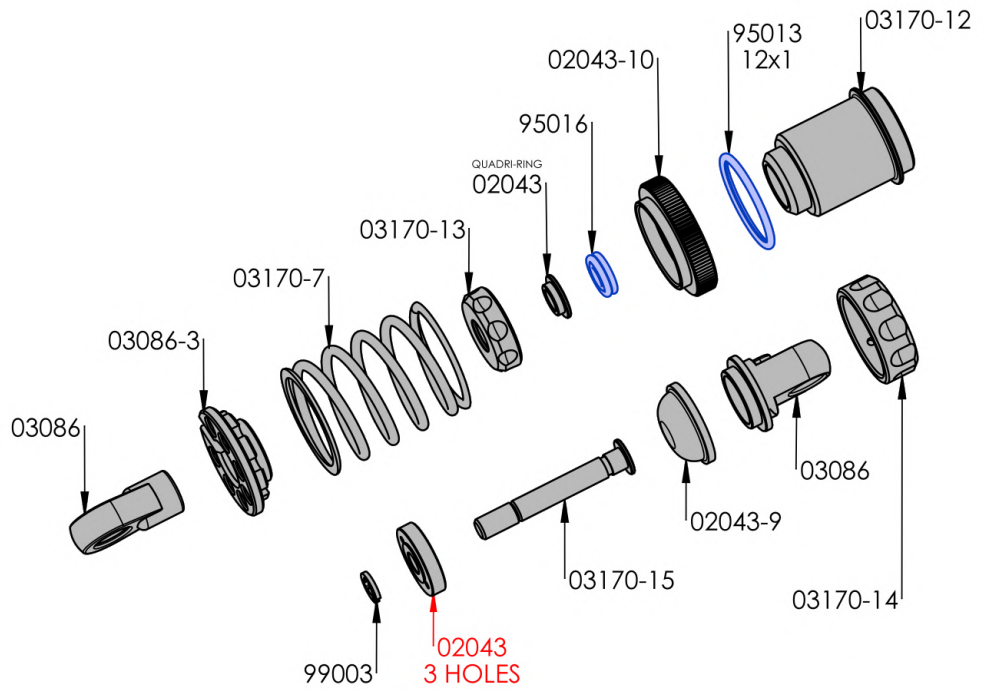


Rear Anti Roll Bar Options

COD	Ø	
03031-1	Ø 1.1	OPTIONAL
03031-2	Ø 1.2	STANDARD IN KIT
03031-3	Ø 1.3	OPTIONAL
03031-4	Ø 1.4	OPTIONAL
03031-5	Ø 1.5	OPTIONAL
03031-6	Ø 1.6	OPTIONAL

Shock Absorbers

SPRINGS			
COD.	Force (lb)	COLOUR	
03170-5	2.1	BLACK	
03170-6	2.2	YELLOW	
03170-7	2.3	RED (IN KIT)	
03170-8	2.6	BLUE	
PROGRESSIVE SPRINGS			
03170-9	1.3-2.9	FUCHSIA	
03170-10	1.4-3.5	GREEN	



7



SHOCK FILLING

Fully extend the piston rod so the piston is at the bottom of the shock body.

Hold the shock upright and fill the shock body with shock oil as in the picture.

Let the oil settle and allow air bubbles to rise to the top. Slowly move the piston up and down until no more air bubbles appear.

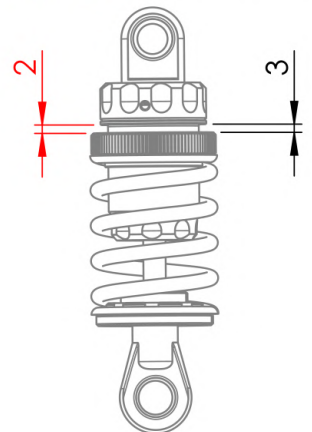
Add shock oil as necessary. Pull the piston rod most of the way out of the shock bod.

Let the shock rest for 5 minutes to allow the air bubbles to scape.

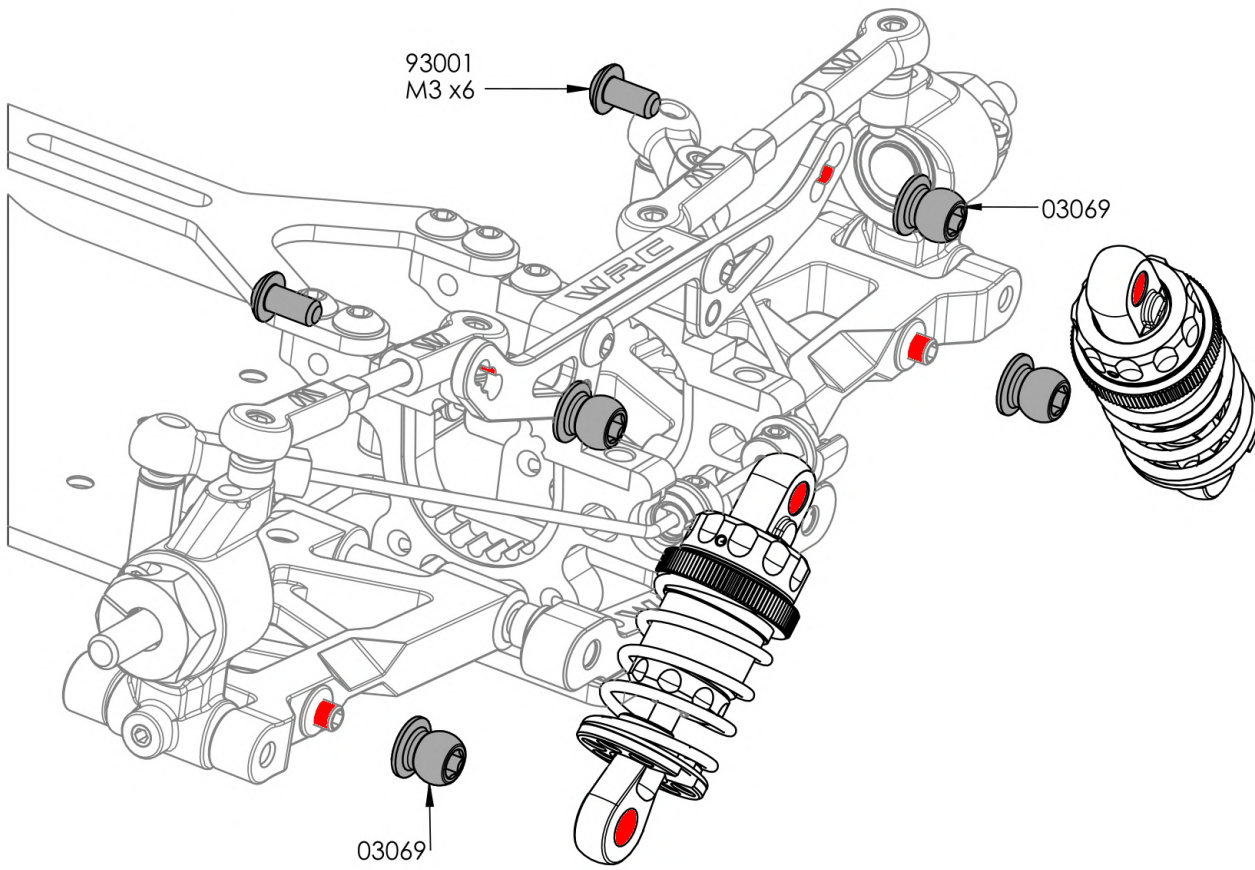
P. ONE HIGH PERFORMANCES SHOCKS OIL	
CODE	CST
SO-350	350
SO-400	400 (IN KIT)
SO-450	450
SO-500	500
SO-550	550
SO-600	600
SO-650	650
SO-700	700
SO-800	800

8

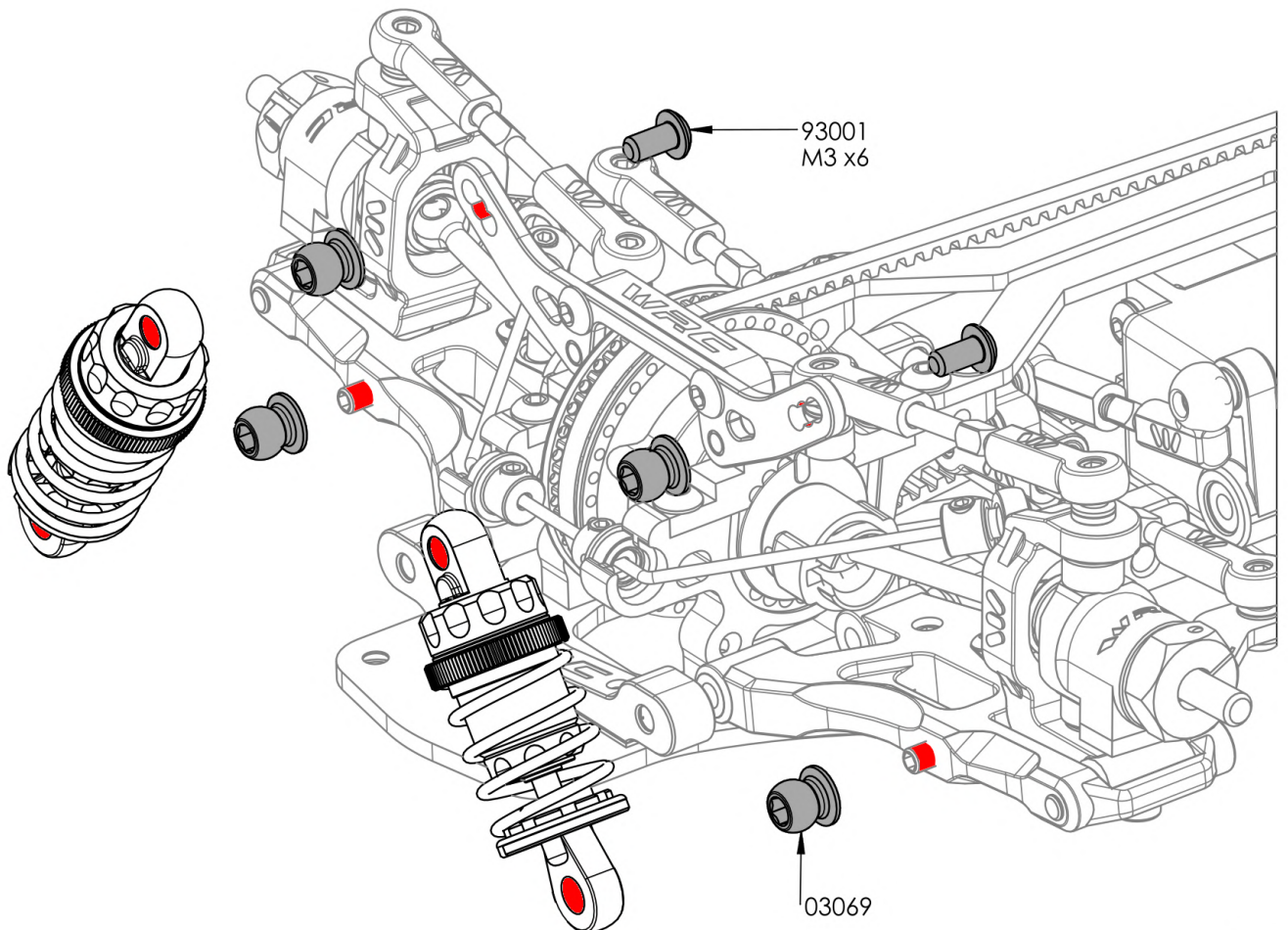
FRONT REAR

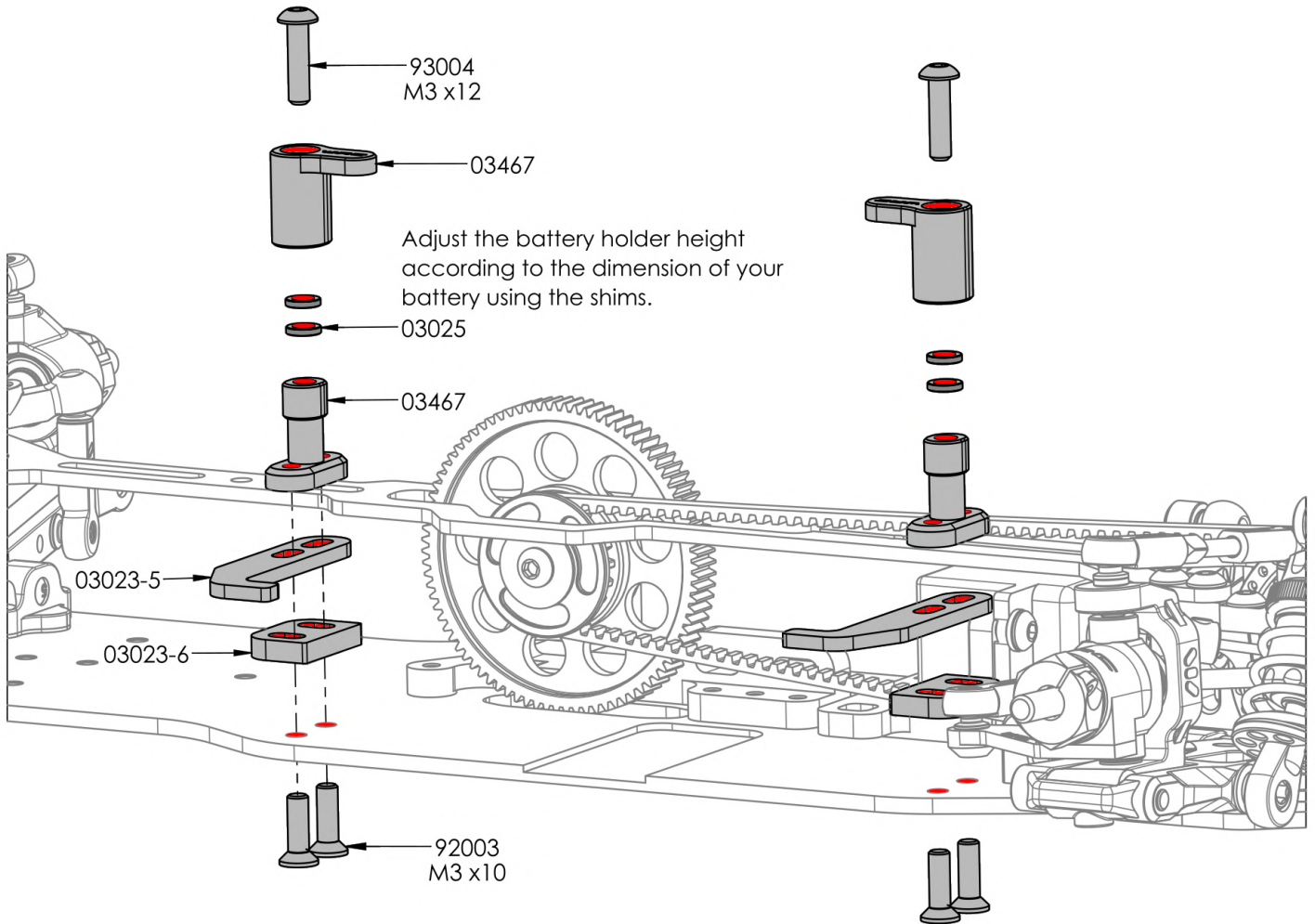


Rear Suspensions

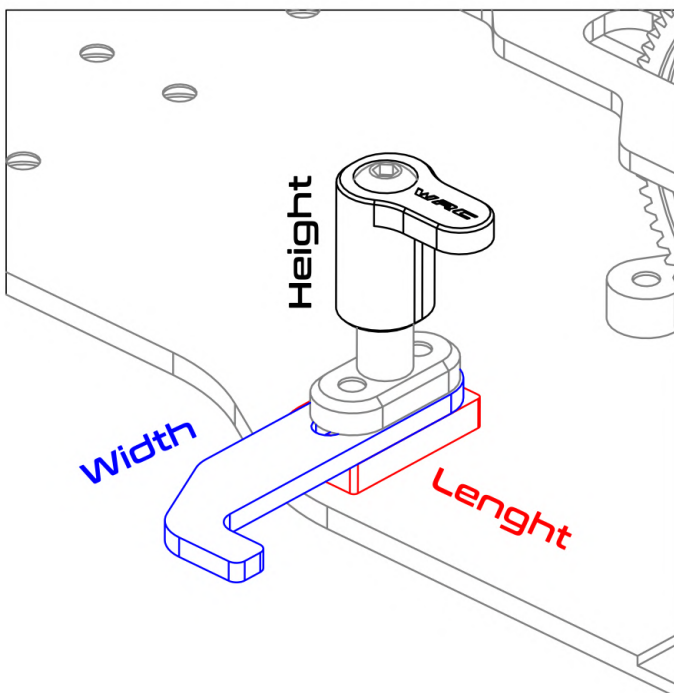


Front Suspensions





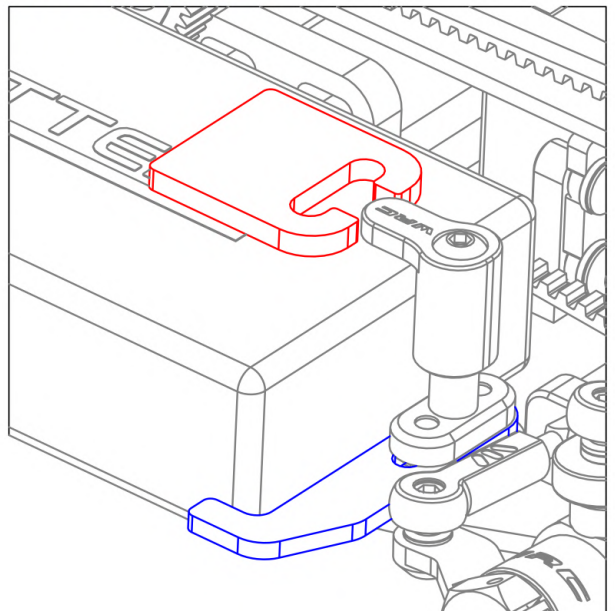
Battery Holder Adjustments



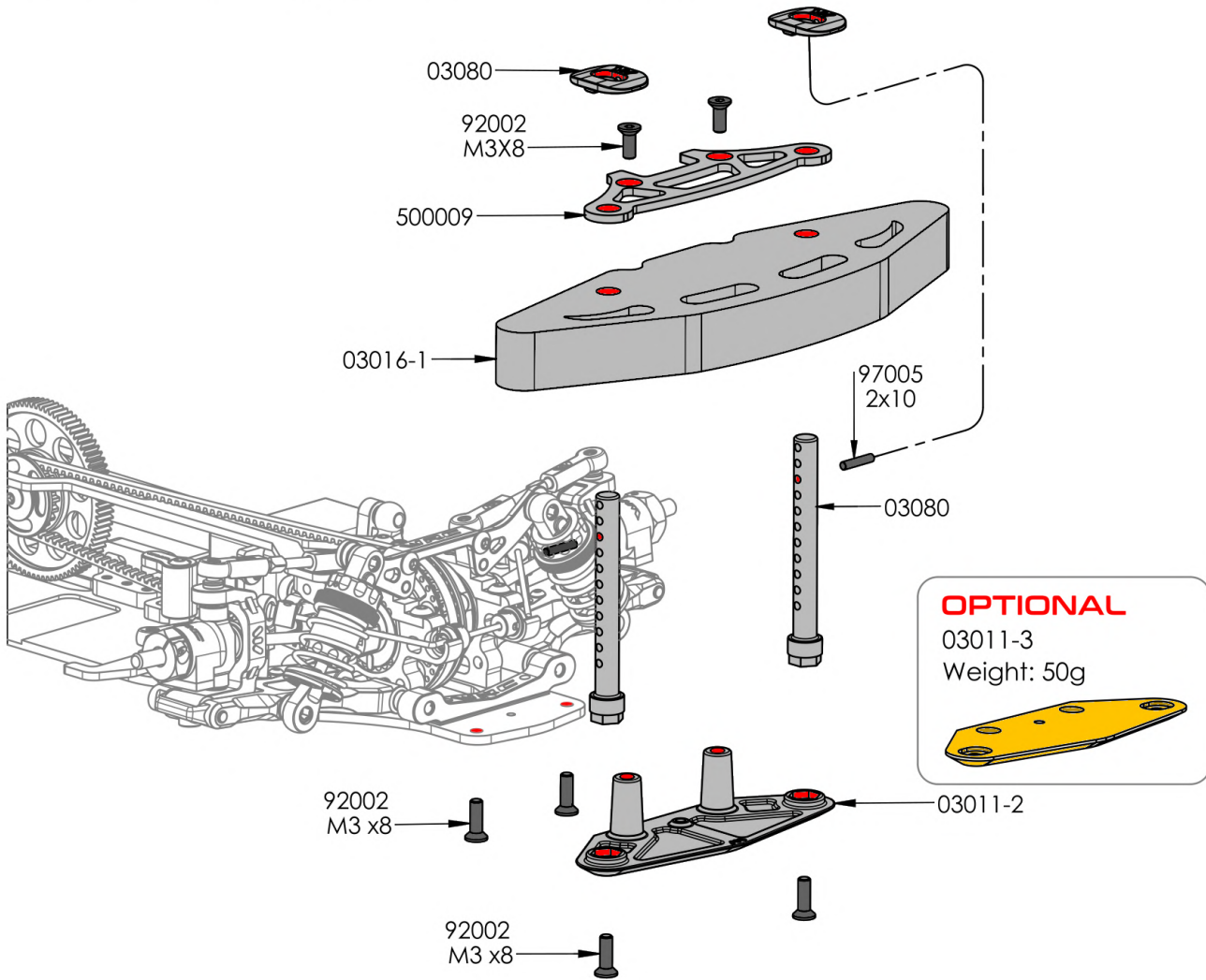
OPTIONAL

COD. 500407

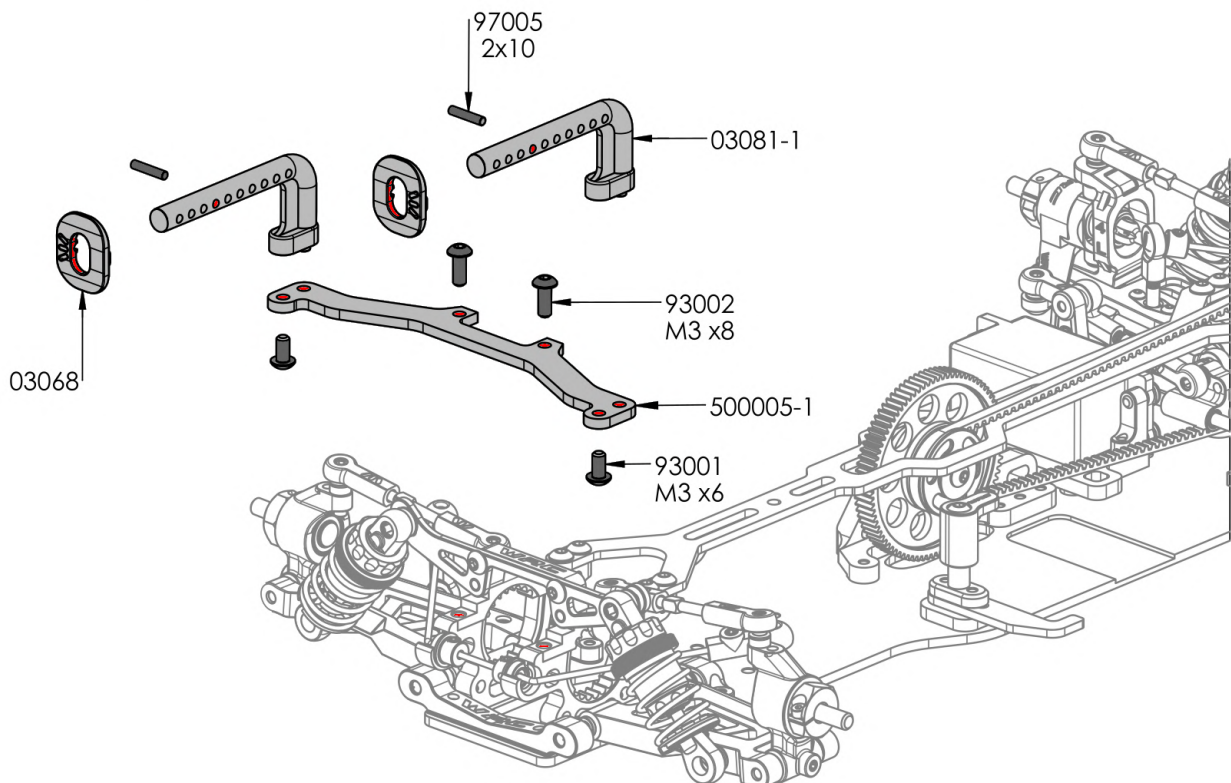
This optional battery holder is designed to hold the battery laterally, it's fixed to the battery using double side tape. By using this part you can delete the lateral battery holder.

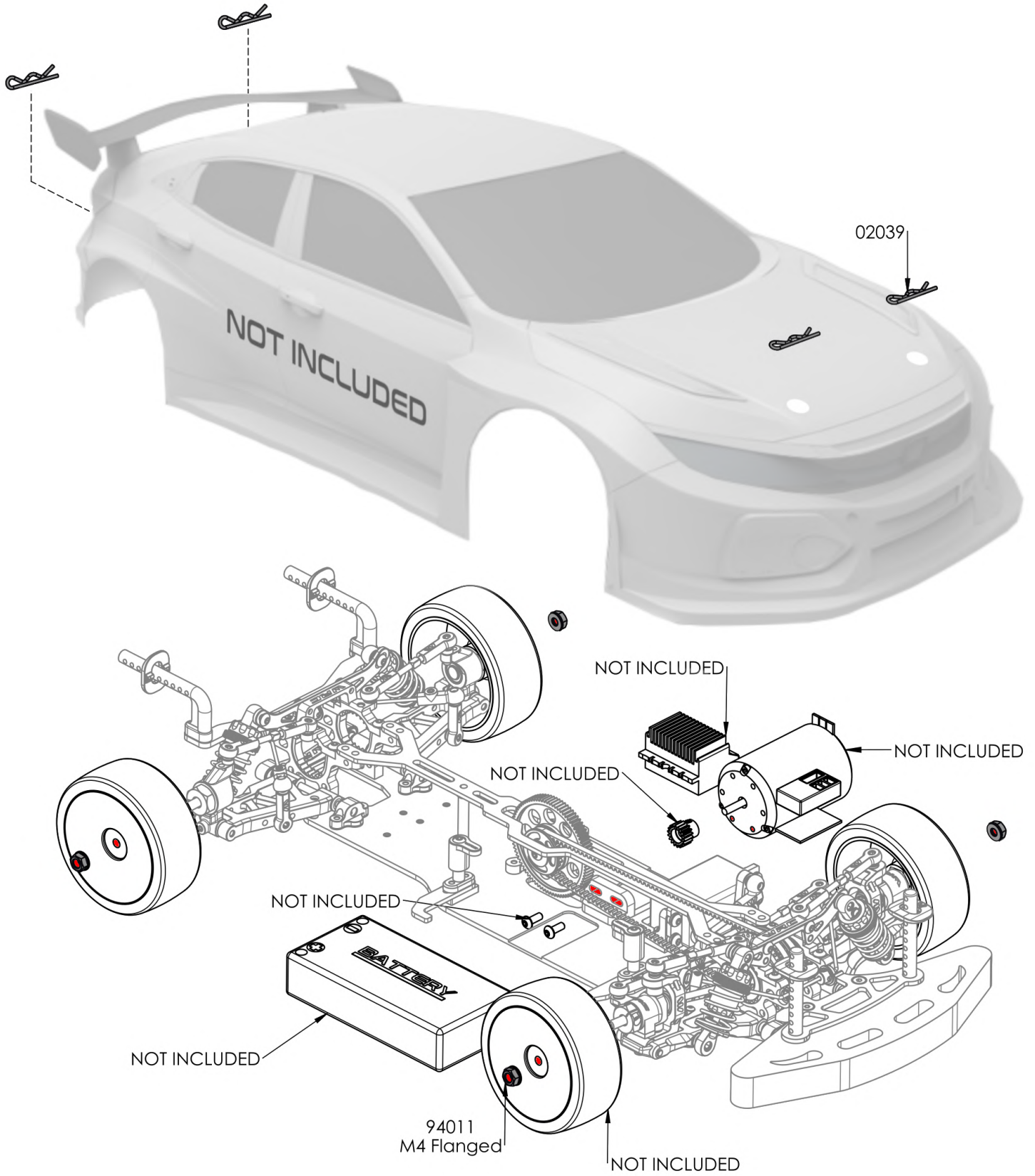


Front Body Support and Bumper



Rear Body Support





NAME _____
 DATE _____
 TRACK _____

TRACK CONDITION

SURFACE	<input type="checkbox"/> SMOOTH	<input checked="" type="checkbox"/> MEDIUM	<input type="checkbox"/> BUMPY
SIZE	<input type="checkbox"/> TIGHT	<input checked="" type="checkbox"/> MEDIUM	<input type="checkbox"/> FAST
TRACTION	<input type="checkbox"/> LOW	<input checked="" type="checkbox"/> MEDIUM	<input type="checkbox"/> HIGH

TRANSMISSION

DIFFERENTIAL OIL	200'000		
PINION	40	SPUR GEAR	87
FINAL DRIVE RATIO	4.078		

SHOCKS

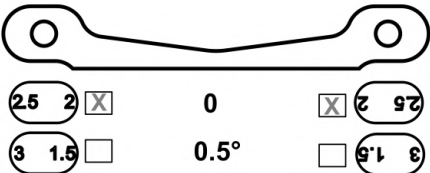
	FRONT	REAR
SPRING:	RED	RED
OIL:	400	400
PISTON:	3	3
LENGHT /mm	9	9

ANTI-ROLL BAR

FRONT	1.3	mm
REAR	1.2	mm

ECCENTRIC BUSHINGS

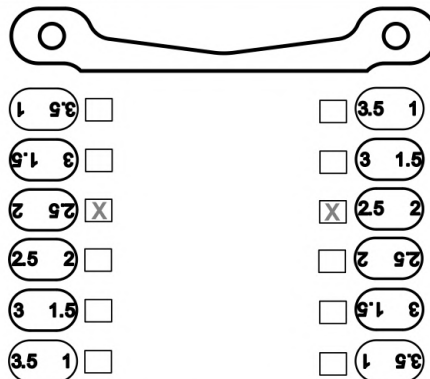
FRONT - FRONT



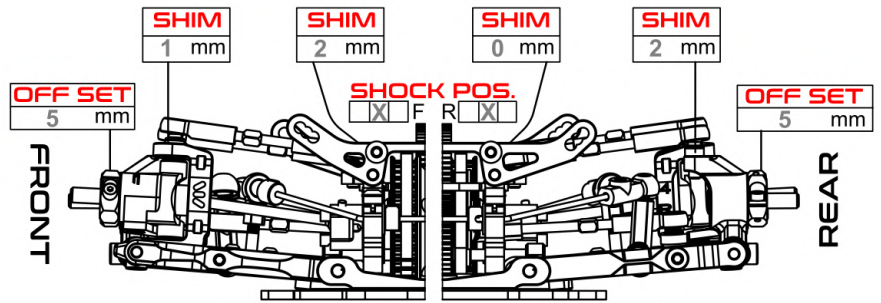
REAR - FRONT



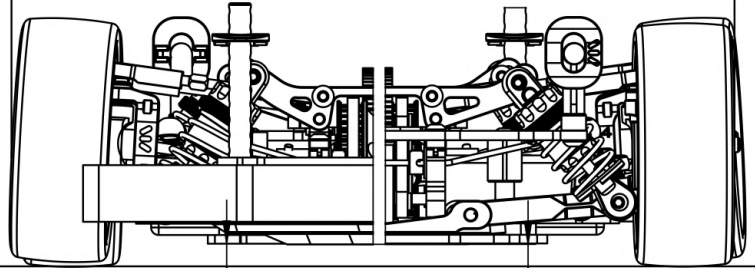
REAR - REAR



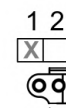
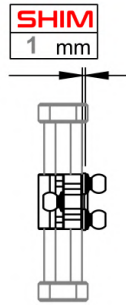
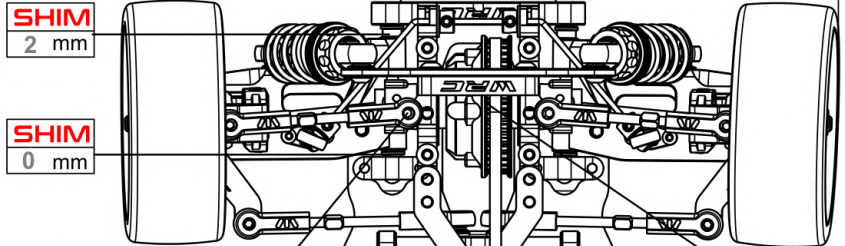
REAR - FRONT



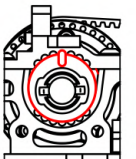
2.2 mm	DOWNSTOP	2.2 mm
+ -0.5	FRONT	REAR -0.5 +
CAMBER		



FRONT RIDE HEIGHT	mm	5	5.2 mm	REAR RIDE HEIGHT
-------------------	----	---	--------	------------------



DIFF. POSITION



REAR TOE	2.5
IN	OUT

WIRC
PROFESSIONAL RC CAR

WWW.WIRCRACING.COM